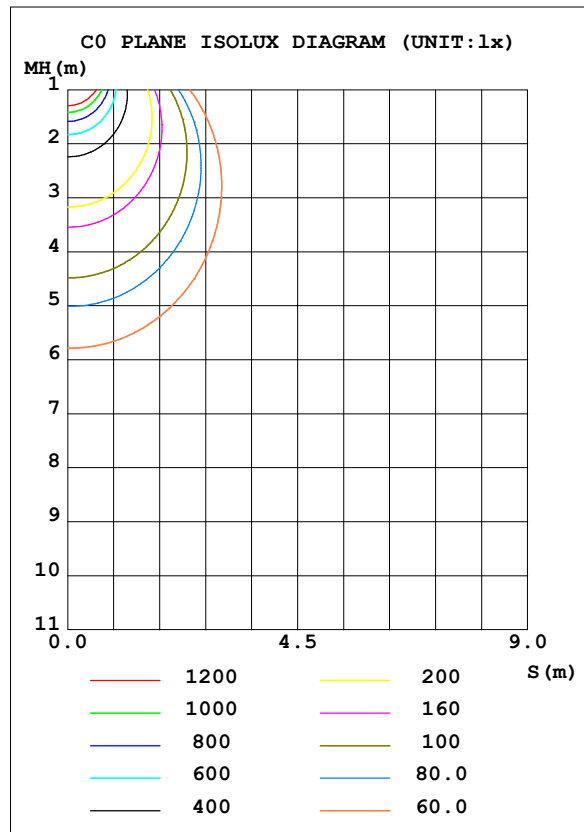
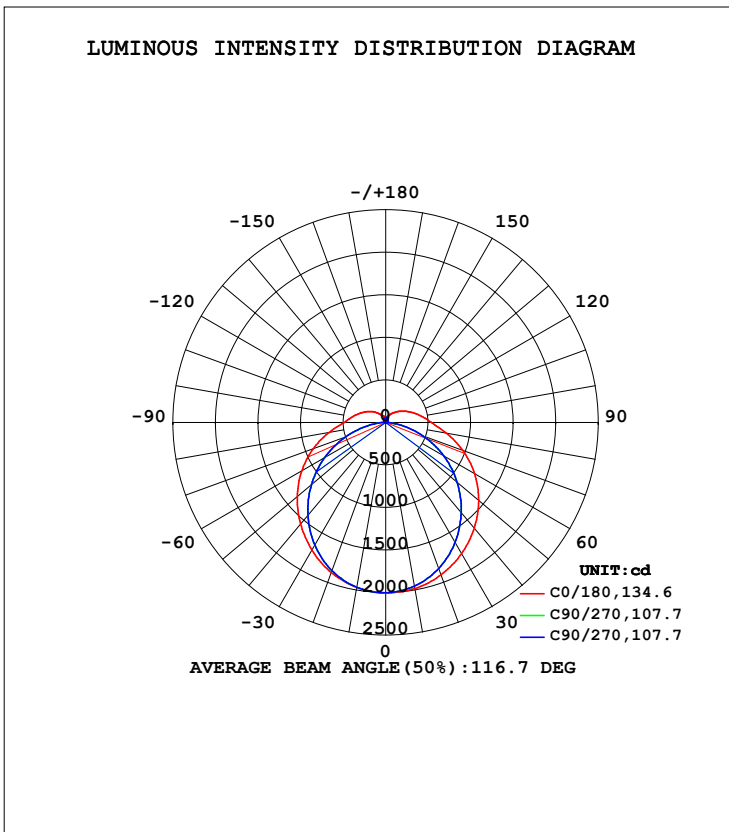


LUMINAIRE PHOTOMETRIC TEST REPORT

Test:U:231.05V I:0.2222A P:49.288W PF:0.9600 Freq:49.99Hz UTHDi:0.16% ITHDi:18.85% KDisp:0.9781 Lamp Flux:7367.67x1 lm		
NAME: DB186-1500-50W-A4C3	TYPE: 50W	WEIGHT:
SPEC.:	DIM.:	SERIAL No.:
MFR.:	SUR.: 0.097	Shielding Angle:

DATA OF LAMP		PHOTOMETRIC DATA Eff: 149.48 lm/W			
MODEL	DB186-1500-50W-A4C3	I _{max} (cd)	2003	S/MH (C0/180)	1.29
NOMINAL POWER (W)	50	LOR (%)	100.0	S/MH (C90/270)	1.24
RATED VOLTAGE (V)	230	TOTAL FLUX (lm)	7367.7	η UP, DN (C0-180)	6.4, 44.0
NOMINAL FLUX (lm)	7367.67	CIE CLASS	SEMI-D.	η UP, DN (C180-360)	6.0, 43.5
LAMPS INSIDE	1	η up (%)	12.4	CIBSE SHR NOM	1.25
TEST VOLTAGE (V)	230	η down (%)	87.6	CIBSE SHR MAX	1.35



C Range: 0 - 360DEG
 C Interval: 90.0DEG
 Test Speed: HIGH
 Temperature: 25.3DEG
 Operators:
 Test Date: 2023-04-16

γ Range: 0 - 180DEG
 γ Interval: 1.0DEG
 Test System: EVERFINE GO-2000A_V1 SYSTEM V2.00.446
 Humidity: 65.0%
 Test Distance: 8.600m [K=1.0000]
 Remarks:

ZONAL FLUX DIAGRAM

ZONAL FLUX DIAGRAM:

γ	C0	C90	C180	C270				γ	Φ zone	Φ total	%lum, lamp
10	1982	1953	1968	1968				0- 10	189.5	189.5	2.57,2.57
20	1906	1826	1877	1853				10- 20	543.3	732.8	9.95,9.95
30	1782	1631	1734	1667				20- 30	825.7	1559	21.2,21.2
40	1620	1383	1557	1424				30- 40	1004	2563	34.8,34.8
50	1428	1098	1357	1141				40- 50	1065	3628	49.2,49.2
60	1208	788.7	1140	829.3				50- 60	1008	4636	62.9,62.9
70	966.2	467.0	908.0	502.2				60- 70	844.4	5480	74.4,74.4
80	723.2	165.5	675.2	192.6				70- 80	605.2	6086	82.6,82.6
90	539.1	4.238	489.1	7.630				80- 90	366.4	6452	87.6,87.6
100	429.9	8.205	398.6	8.100				90-100	256.0	6708	91,91
110	340.8	14.12	322.6	14.68				100-110	203.4	6911	93.8,93.8
120	266.8	19.87	257.1	21.13				110-120	156.3	7068	95.9,95.9
130	204.8	25.10	199.2	27.14				120-130	114.8	7182	97.5,97.5
140	152.2	33.56	143.4	35.64				130-140	79.55	7262	98.6,98.6
150	111.7	42.17	102.1	44.44				140-150	52.30	7314	99.3,99.3
160	79.07	49.81	76.01	52.02				150-160	32.24	7347	99.7,99.7
170	44.14	55.53	44.21	56.70				160-170	16.51	7363	99.9,99.9
180	34.81	58.85	35.01	58.65				170-180	4.578	7368	100,100
DEG	LUMINOUS INTENSITY:cd								UNIT:lm		

0 - 45 DEG Zonal Flux:3095.4 %lum: 42.0%

0 - 60 DEG Zonal Flux:4636 %lum: 62.9%

All measured values may vary less than 35 %

from the average measured value in the 0 to 130 deg. zone: 18.9%

All measured values in the 0 to 130 deg. zone

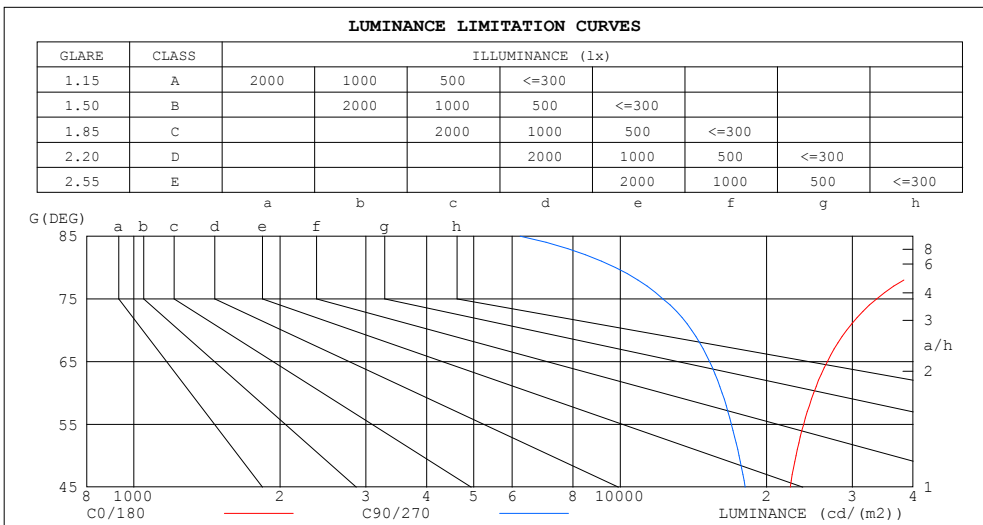
may vary less than 50% from the average value of itself: 28.6%

C Range: 0 - 360DEG
 C Interval: 90.0DEG
 Test Speed: HIGH
 Temperature:25.3DEG
 Operators:
 Test Date:2023-04-16

γ Range: 0 - 180DEG
 γ Interval: 1.0DEG
 Test System:EVERFINE GO-2000A_V1 SYSTEM V2.00.446
 Humidity:65.0%
 Test Distance:8.600m [K=1.0000]
 Remarks:

LUMINANCE LIMITATION CURVES

Test:U:231.05V I:0.2222A P:49.288W PF:0.9600 Freq:49.99Hz UTHDi:0.16% ITHDi:18.85% KDisp:0.9781 Lamp Flux:7367.67x1 lm		
NAME: DB186-1500-50W-A4C3	TYPE: 50W	WEIGHT:
SPEC.:	DIM.:	SERIAL No.:
MFR.:	SUR.: 0.097	Shielding Angle:



LUMINANCE cd/(m2)		
G (DEG)	C0/180	C90/270
85	73253	6224
80	43084	9789
75	33681	12249
70	29224	14027
65	26662	15267
60	24996	16205
55	23829	16940
50	22985	17549
45	22357	18075

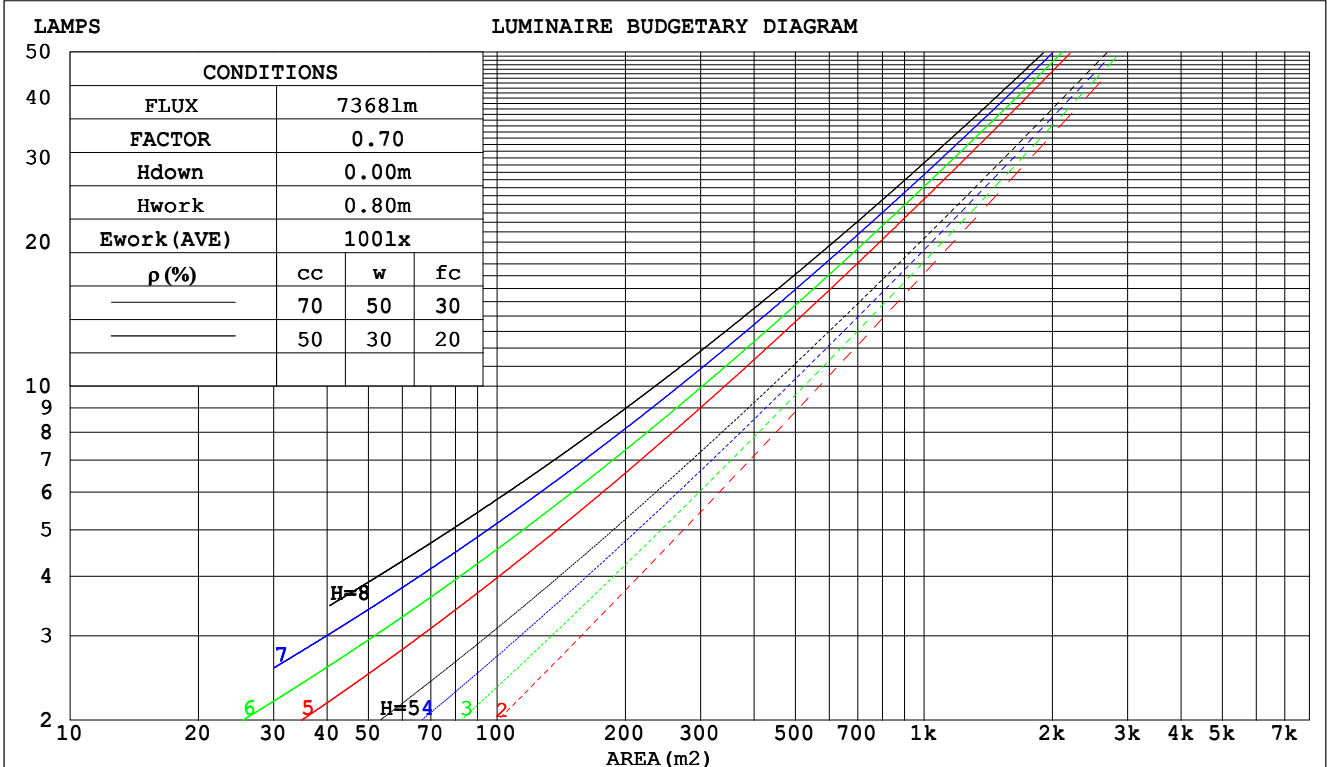
C Range: 0 - 360DEG
 C Interval: 90.0DEG
 Test Speed: HIGH
 Temperature:25.3DEG
 Operators:
 Test Date:2023-04-16

γ Range: 0 - 180DEG
 γ Interval: 1.0DEG
 Test System:EVERFINE GO-2000A_V1 SYSTEM V2.00.446
 Humidity:65.0%
 Test Distance:8.600m [K=1.0000]
 Remarks:

CU AND LUMINAIRE BUDGETARY ESTIMATE DIAGRAM

Test:U:231.05V I:0.2222A P:49.288W PF:0.9600 Freq:49.99Hz UTHDi:0.16% ITHDi:18.85% KDisp:0.9781 Lamp Flux:7367.67x1 lm		
NAME: DB186-1500-50W-A4C3	TYPE: 50W	WEIGHT:
SPEC.:	DIM.:	SERIAL No.:
MFR.:	SUR.: 0.097	Shielding Angle:

ρcc	80%			70%			50%			30%			10%			0
	50%	30%	10%	50%	30%	10%	50%	30%	10%	50%	30%	10%	50%	30%	10%	0
ρw																0
ρfc	20%			20%			20%			20%			20%			0
RCR	RCR:Room Cavity Ratio						Coefficients of Utilization(CU)									
0.0	1.16	1.16	1.16	1.12	1.12	1.12	1.04	1.04	1.04	.97	.97	.97	.91	.91	.91	.88
1.0	.99	.94	.90	.95	.91	.87	.89	.85	.82	.83	.80	.77	.77	.75	.73	.70
2.0	.85	.78	.72	.82	.75	.70	.77	.71	.66	.71	.67	.63	.67	.63	.60	.57
3.0	.74	.66	.59	.72	.64	.57	.67	.60	.55	.63	.57	.52	.58	.54	.50	.47
4.0	.65	.56	.49	.63	.55	.48	.59	.52	.46	.55	.49	.44	.52	.47	.42	.40
5.0	.58	.49	.42	.56	.48	.41	.53	.45	.40	.50	.43	.38	.46	.41	.37	.34
6.0	.52	.43	.37	.51	.42	.36	.48	.40	.35	.45	.38	.33	.42	.36	.32	.30
7.0	.47	.38	.32	.46	.38	.32	.43	.36	.30	.41	.34	.29	.38	.33	.28	.26
8.0	.43	.34	.29	.42	.34	.28	.39	.32	.27	.37	.31	.26	.35	.30	.25	.23
9.0	.39	.31	.26	.38	.30	.25	.36	.29	.24	.34	.28	.24	.32	.27	.23	.21
10.0	.36	.28	.23	.35	.28	.23	.33	.27	.22	.32	.26	.21	.30	.25	.21	.19



C Range: 0 - 360DEG
 C Interval: 90.0DEG
 Test Speed: HIGH
 Temperature:25.3DEG
 Operators:
 Test Date:2023-04-16

γ Range: 0 - 180DEG
 γ Interval: 1.0DEG
 Test System:EVERFINE GO-2000A_V1 SYSTEM V2.00.446
 Humidity:65.0%
 Test Distance:8.600m [K=1.0000]
 Remarks:

WEC AND CCEC

Test:U:231.05V I:0.2222A P:49.288W PF:0.9600 Freq:49.99Hz UTHDi:0.16% ITHDi:18.85% KDisp:0.9781 Lamp Flux:7367.67x1 lm		
NAME: DB186-1500-50W-A4C3	TYPE: 50W	WEIGHT:
SPEC.:	DIM.:	SERIAL No.:
MFR.:	SUR.: 0.097	Shielding Angle:

ρcc	80%			70%			50%			30%			10%			0
ρw	50%	30%	10%	50%	30%	10%	50%	30%	10%	50%	30%	10%	50%	30%	10%	0
ρfc	20%			20%			20%			20%			20%			0
RCR	RCR:Room Cavity Ratio						Wall Exitance Coefficients(WEC)									
0.0																
1.0	.350	.199	.063	.339	.194	.062	.319	.183	.058	.300	.173	.056	.283	.164	.053	
2.0	.313	.172	.053	.304	.167	.052	.285	.159	.049	.268	.150	.047	.252	.143	.045	
3.0	.283	.151	.045	.274	.147	.044	.258	.140	.042	.242	.133	.041	.228	.126	.039	
4.0	.258	.134	.039	.250	.131	.039	.235	.124	.037	.221	.119	.036	.208	.113	.034	
5.0	.236	.120	.035	.229	.117	.034	.215	.112	.033	.202	.107	.032	.191	.102	.031	
6.0	.217	.109	.031	.211	.106	.031	.198	.102	.030	.187	.097	.029	.176	.093	.028	
7.0	.201	.099	.028	.195	.097	.028	.184	.093	.027	.174	.089	.026	.164	.085	.025	
8.0	.187	.091	.026	.182	.089	.025	.171	.086	.024	.162	.082	.024	.153	.078	.023	
9.0	.175	.085	.024	.170	.083	.023	.160	.079	.022	.152	.076	.022	.143	.073	.021	
10.0	.164	.079	.022	.159	.077	.021	.151	.074	.021	.143	.071	.020	.135	.068	.019	

ρcc	80%			70%			50%			30%			10%			0
ρw	50%	30%	10%	50%	30%	10%	50%	30%	10%	50%	30%	10%	50%	30%	10%	0
ρfc	20%			20%			20%			20%			20%			0
RCR	RCR:Room Cavity Ratio						Ceiling Cavity Exitance Coefficients(CCEC)									
0.0	.285	.285	.285	.244	.244	.244	.166	.166	.166	.096	.096	.096	.031	.031	.031	
1.0	.279	.251	.227	.238	.216	.195	.163	.148	.135	.094	.086	.078	.030	.028	.025	
2.0	.271	.228	.192	.232	.196	.166	.159	.136	.115	.092	.079	.068	.029	.026	.022	
3.0	.264	.211	.169	.226	.182	.147	.155	.126	.103	.090	.074	.061	.029	.024	.020	
4.0	.256	.198	.154	.220	.171	.134	.151	.119	.094	.087	.070	.056	.028	.023	.018	
5.0	.248	.188	.144	.213	.163	.125	.147	.114	.088	.085	.067	.052	.027	.022	.017	
6.0	.241	.180	.136	.207	.156	.119	.143	.109	.084	.083	.064	.050	.027	.021	.016	
7.0	.234	.173	.131	.201	.150	.114	.139	.105	.081	.081	.062	.048	.026	.020	.016	
8.0	.228	.168	.127	.196	.146	.110	.136	.102	.078	.079	.060	.047	.026	.020	.015	
9.0	.222	.163	.123	.191	.141	.108	.132	.099	.076	.077	.059	.046	.025	.019	.015	
10.0	.216	.159	.121	.186	.138	.105	.129	.097	.075	.075	.057	.045	.024	.019	.015	

C Range: 0 - 360DEG
 C Interval: 90.0DEG
 Test Speed: HIGH
 Temperature:25.3DEG
 Operators:
 Test Date:2023-04-16

γ Range: 0 - 180DEG
 γ Interval: 1.0DEG
 Test System:EVERFINE GO-2000A_V1 SYSTEM V2.00.446
 Humidity:65.0%
 Test Distance:8.600m [K=1.0000]
 Remarks:

UGR(Unified Glare Rating) Table

Test:U:231.05V I:0.2222A P:49.288W PF:0.9600 Freq:49.99Hz UTHDi:0.16% ITHDi:18.85% KDisp:0.9781 Lamp Flux:7367.67x1 lm										
NAME: DB186-1500-50W-A4C3			TYPE: 50W			WEIGHT:				
SPEC.:			DIM.:			SERIAL No.:				
MFR.:			SUR.: 0.097			Shielding Angle:				
ceiling/cavity	0.7	0.7	0.5	0.5	0.3	0.7	0.7	0.5	0.5	0.3
walls	0.5	0.3	0.5	0.3	0.3	0.5	0.3	0.5	0.3	0.3
working plane	0.2	0.2	0.2	0.2	0.2	0.2	0.2	0.2	0.2	0.2
Room dimensions	Viewed crosswise					Viewed endwise				
x = 2H y = 2H	23.3	24.8	23.8	25.2	25.6	21.8	23.2	22.3	23.7	24.1
3H	25.6	26.9	26.1	27.4	27.9	23.2	24.5	23.7	25.0	25.5
4H	26.8	28.1	27.3	28.5	29.1	23.8	25.0	24.3	25.5	26.0
6H	28.1	29.3	28.7	29.8	30.3	24.1	25.2	24.6	25.7	26.3
8H	28.9	30.0	29.4	30.5	31.0	24.2	25.3	24.7	25.8	26.3
12H	29.7	30.8	30.2	31.3	31.8	24.2	25.2	24.7	25.7	26.3
4H 2H	23.9	25.1	24.3	25.5	26.1	22.7	23.9	23.2	24.4	24.9
3H	26.3	27.4	26.9	27.9	28.5	24.4	25.4	24.9	25.9	26.5
4H	27.7	28.7	28.2	29.2	29.8	25.0	26.0	25.6	26.6	27.2
6H	29.2	30.1	29.8	30.6	31.3	25.5	26.4	26.1	27.0	27.6
8H	30.0	30.8	30.6	31.4	32.1	25.7	26.5	26.3	27.1	27.7
12H	31.0	31.7	31.6	32.3	33.0	25.7	26.5	26.3	27.1	27.8
8H 4H	27.9	28.8	28.5	29.3	30.0	25.7	26.5	26.3	27.1	27.7
6H	29.7	30.3	30.3	31.0	31.6	26.5	27.1	27.1	27.8	28.4
8H	30.7	31.3	31.3	31.9	32.6	26.8	27.4	27.4	28.0	28.7
12H	31.9	32.4	32.5	33.0	33.8	27.0	27.5	27.6	28.1	28.9
12H 4H	27.9	28.7	28.5	29.3	29.9	25.9	26.6	26.5	27.2	27.9
6H	29.7	30.3	30.4	31.0	31.7	26.8	27.4	27.4	28.0	28.7
8H	30.8	31.3	31.5	32.0	32.7	27.2	27.7	27.9	28.4	29.1
Variations with the observer position at spacings(CIE Pub.117):										
S = 1.0H	+ 0.1 / - 0.1					+ 0.1 / - 0.2				
1.5H	+ 0.2 / - 0.2					+ 0.2 / - 0.3				
2.0H	+ 0.2 / - 0.3					+ 0.2 / - 0.5				

CIE Pub.117, 7368 lm Total Lamp Luminous Flux Corrected (8log(F/F0) = 6.9)
Area: 0.097 m2

C Range: 0 - 360DEG
C Interval: 90.0DEG
Test Speed: HIGH
Temperature:25.3DEG
Operators:
Test Date:2023-04-16

γ Range: 0 - 180DEG
γ Interval: 1.0DEG
Test System:EVERFINE GO-2000A_V1 SYSTEM V2.00.446
Humidity:65.0%
Test Distance:8.600m [K=1.0000]
Remarks:

UTILIZATION FACTORS TABLE

Test:U:231.05V I:0.2222A P:49.288W PF:0.9600 Freq:49.99Hz UTHDi:0.16% ITHDi:18.85% KDisp:0.9781 Lamp Flux:7367.67x1 lm		
NAME: DB186-1500-50W-A4C3	TYPE: 50W	WEIGHT:
SPEC.:	DIM.:	SERIAL No.:
MFR.:	SUR.: 0.097	Shielding Angle:

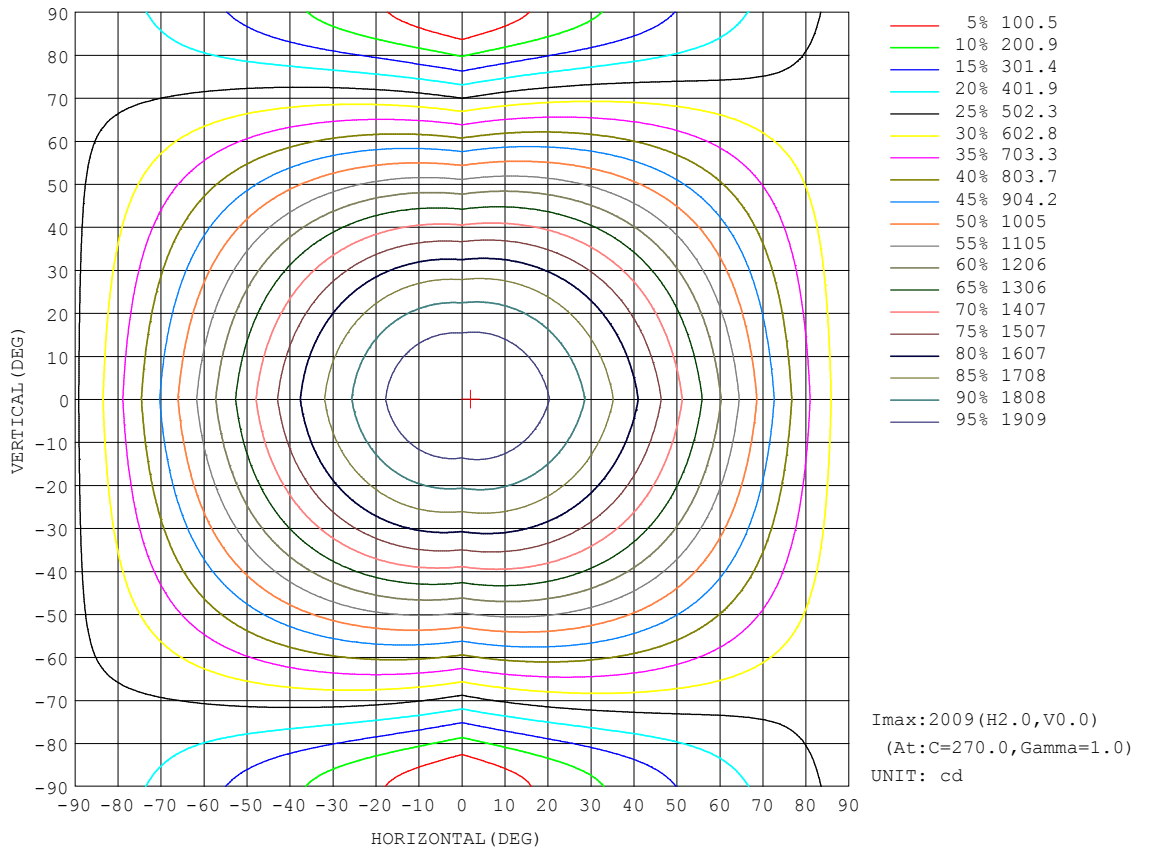
REFLECTANCE										
Ceiling	0.8	0.8	0.8	0.7	0.7	0.7	0.5	0.5	0.5	0
Walls	0.7	0.5	0.3	0.7	0.5	0.3	0.7	0.5	0.3	0
Working plane	0.2	0.2	0.2	0.2	0.2	0.2	0.2	0.2	0.2	0
ROOM INDEX	UTILIZATION FACTORS (PERCENT) $k(RI) \times RCR = 5$									
k = 0.60	51	39	32	50	39	32	49	38	32	25
0.80	61	49	41	60	48	40	57	47	40	32
1.00	69	57	49	67	56	48	64	57	47	39
1.25	76	64	56	74	63	56	70	61	54	45
1.50	81	70	62	79	68	61	74	66	59	50
2.00	88	78	71	85	76	69	80	73	67	56
2.50	92	83	76	89	81	74	84	77	71	60
3.00	96	88	81	93	85	79	87	81	76	64
4.00	100	93	88	97	91	85	91	86	81	69
5.00	103	97	92	100	94	89	93	89	85	72
ROOM INDEX	UF(total)									Direct
According to DIN EN 13032-2 2004			Suspended				SHRNOM = 1.25			

C Range: 0 - 360DEG
 C Interval: 90.0DEG
 Test Speed: HIGH
 Temperature:25.3DEG
 Operators:
 Test Date:2023-04-16

γ Range: 0 - 180DEG
 γ Interval: 1.0DEG
 Test System:EVERFINE GO-2000A_V1 SYSTEM V2.00.446
 Humidity:65.0%
 Test Distance:8.600m [K=1.0000]
 Remarks:

ISOCANDELA DIAGRAM

Test:U:231.05V I:0.2222A P:49.288W PF:0.9600 Freq:49.99Hz UTHDi:0.16% ITHDi:18.85% KDisp:0.9781 Lamp Flux:7367.67x1 lm		
NAME: DB186-1500-50W-A4C3	TYPE: 50W	WEIGHT:
SPEC.:	DIM.:	SERIAL No.:
MFR.:	SUR.: 0.097	Shielding Angle:

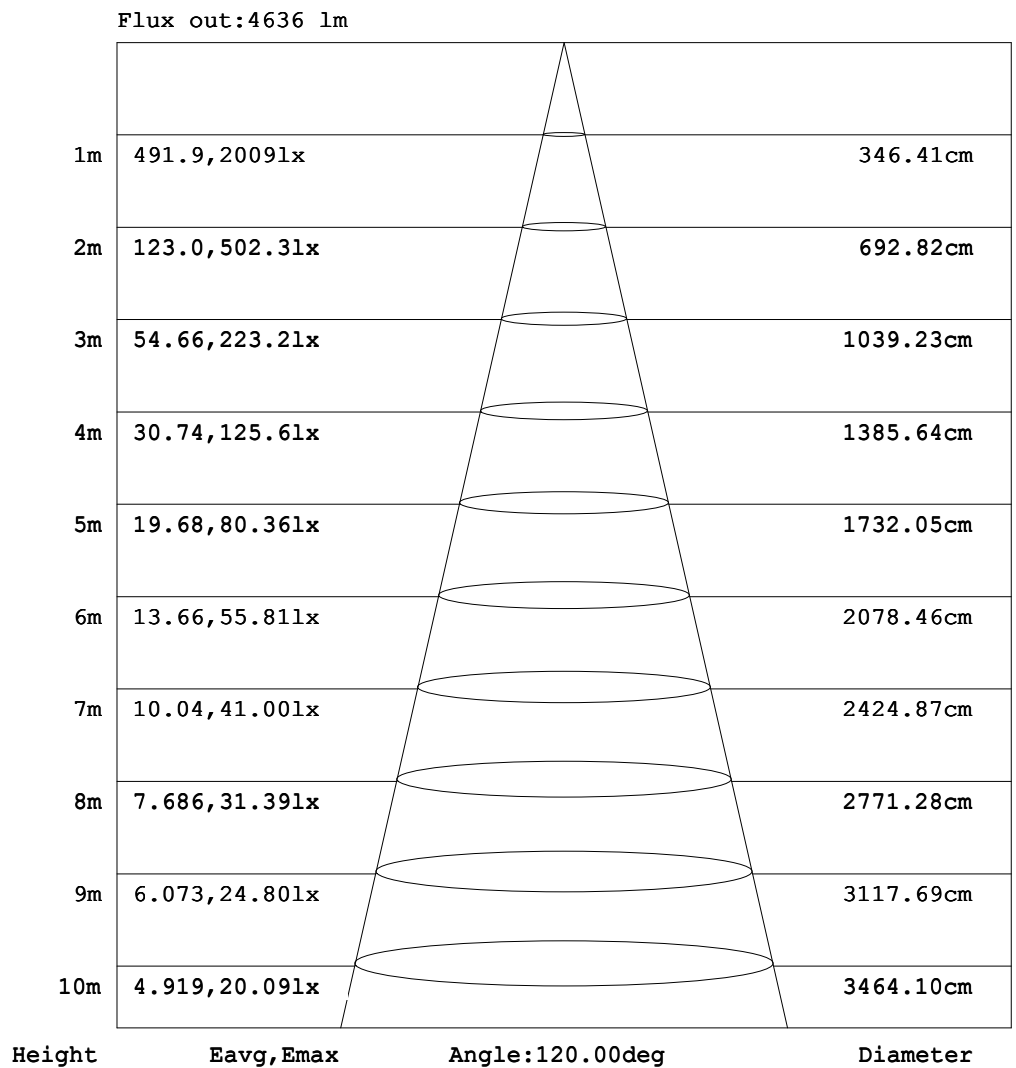


C Range: 0 - 360DEG
C Interval: 90.0DEG
Test Speed: HIGH
Temperature:25.3DEG
Operators:
Test Date:2023-04-16

γ Range: 0 - 180DEG
γ Interval: 1.0DEG
Test System:EVERFINE GO-2000A_V1 SYSTEM V2.00.446
Humidity:65.0%
Test Distance:8.600m [K=1.0000]
Remarks:

AAI Figure

Test:U:231.05V I:0.2222A P:49.288W PF:0.9600 Freq:49.99Hz UTHDi:0.16% ITHDi:18.85% KDisp:0.9781 Lamp Flux:7367.67x1 lm		
NAME: DB186-1500-50W-A4C3	TYPE: 50W	WEIGHT:
SPEC.:	DIM.:	SERIAL No.:
MFR.:	SUR.: 0.097	Shielding Angle:



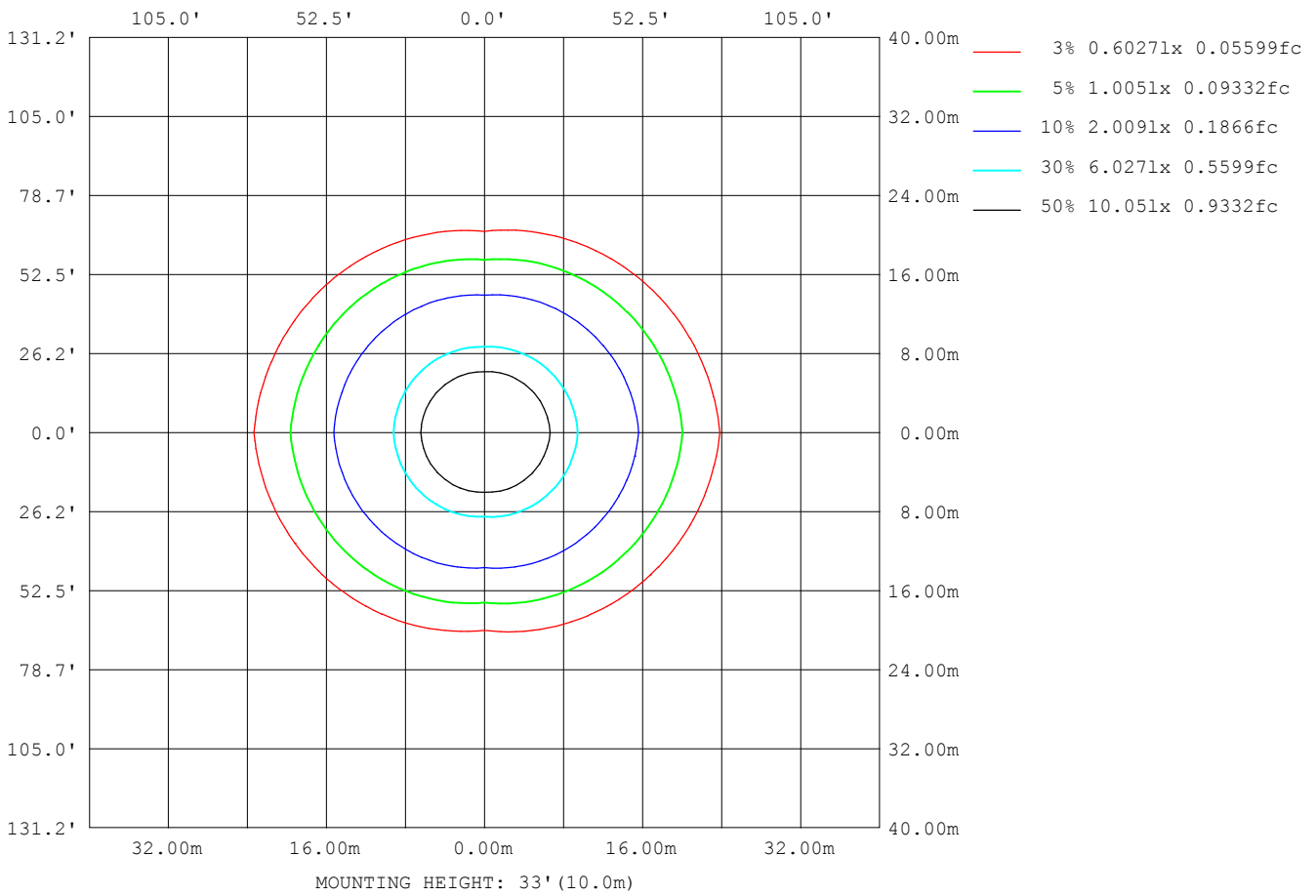
Note:The Curves indicate the illuminated area and the average illumination when the luminaire is at different distance.

C Range: 0 - 360DEG
 C Interval: 90.0DEG
 Test Speed: HIGH
 Temperature:25.3DEG
 Operators:
 Test Date:2023-04-16

γ Range: 0 - 180DEG
 γ Interval: 1.0DEG
 Test System:EVERFINE GO-2000A_V1 SYSTEM V2.00.446
 Humidity:65.0%
 Test Distance:8.600m [K=1.0000]
 Remarks:

ISOLUX DIAGRAM

Test:U:231.05V I:0.2222A P:49.288W PF:0.9600 Freq:49.99Hz UTHDi:0.16% ITHDi:18.85% KDisp:0.9781 Lamp Flux:7367.67x1 lm		
NAME: DB186-1500-50W-A4C3	TYPE: 50W	WEIGHT:
SPEC.:	DIM.:	SERIAL No.:
MFR.:	SUR.: 0.097	Shielding Angle:



C Range: 0 - 360DEG
 C Interval: 90.0DEG
 Test Speed: HIGH
 Temperature:25.3DEG
 Operators:
 Test Date:2023-04-16

γ Range: 0 - 180DEG
 γ Interval: 1.0DEG
 Test System:EVERFINE GO-2000A_V1 SYSTEM V2.00.446
 Humidity:65.0%
 Test Distance:8.600m [K=1.0000]
 Remarks:

LED Avg.L Report

Test:U:231.05V I:0.2222A P:49.288W PF:0.9600 Freq:49.99Hz UTHDi:0.16% ITHDi:18.85% KDisp:0.9781 Lamp Flux:7367.67x1 lm		
NAME: DB186-1500-50W-A4C3	TYPE: 50W	WEIGHT:
SPEC.:	DIM.:	SERIAL No.:
MFR.:	SUR.: 0.097	Shielding Angle:

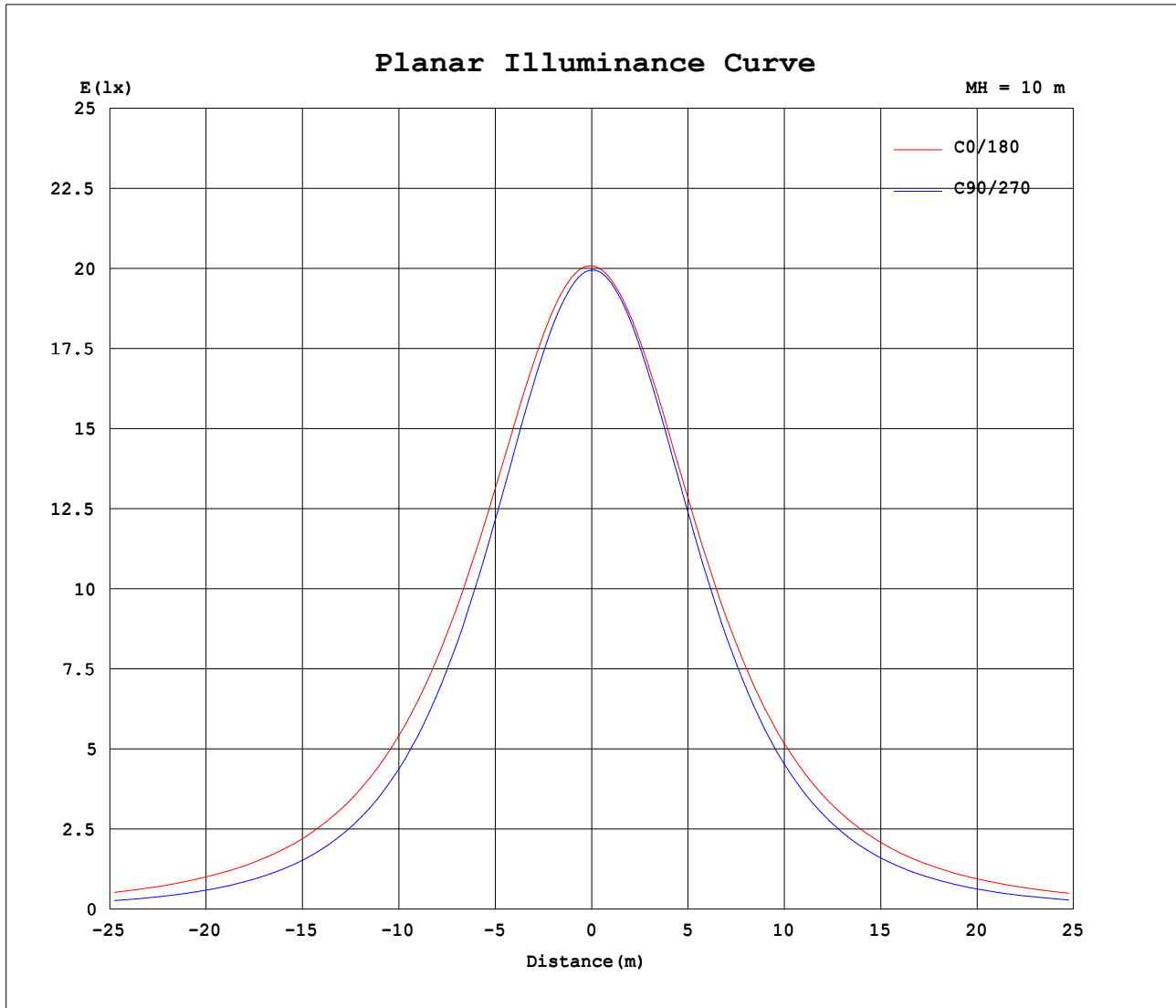
AvgL	cd/m2
L_0~180 (65) av	25790
L_0~180 (75) av	32527
L_0~180 (85) av	70233
L_90~270 (65) av	15789
L_90~270 (75) av	12956
L_90~270 (85) av	7313
L_45 (65) av	19506
L_45 (75) av	20260
L_45 (85) av	30831

Standard: GB/T 29293-2012

C Range: 0 - 360DEG
 C Interval: 90.0DEG
 Test Speed: HIGH
 Temperature:25.3DEG
 Operators:
 Test Date:2023-04-16

γ Range: 0 - 180DEG
 γ Interval: 1.0DEG
 Test System:EVERFINE GO-2000A_V1 SYSTEM V2.00.446
 Humidity:65.0%
 Test Distance:8.600m [K=1.0000]
 Remarks:

Planar Illuminance Curve



C Range: 0 - 360DEG
 C Interval: 90.0DEG
 Test Speed: HIGH
 Temperature:25.3DEG
 Operators:
 Test Date:2023-04-16

γ Range: 0 - 180DEG
 γ Interval: 1.0DEG
 Test System:EVERFINE GO-2000A_V1 SYSTEM V2.00.446
 Humidity:65.0%
 Test Distance:8.600m [K=1.0000]
 Remarks:

LUMINOUS DISTRIBUTION INTENSITY DATA

Test:U:231.05V I:0.2222A P:49.288W PF:0.9600 Freq:49.99Hz UTHDi:0.16% ITHDi:18.85% KDisp:0.9781 Lamp Flux:7367.67x1 lm		
NAME: DB186-1500-50W-A4C3	TYPE: 50W	WEIGHT:
SPEC.:	DIM.:	SERIAL No.:
MFR.:	SUR.: 0.097	Shielding Angle:

Table--1

UNIT: cd

C (DEG) \ y (DEG)	0	90	180	270															
0	2002	2002	2002	2002															
5	1999	1988	1992	1996															
10	1982	1953	1968	1968															
15	1951	1899	1930	1920															
20	1906	1826	1877	1853															
25	1849	1736	1811	1768															
30	1782	1631	1734	1667															
35	1706	1513	1649	1552															
40	1620	1383	1557	1424															
45	1528	1244	1460	1287															
50	1428	1098	1357	1141															
55	1321	946	1251	987															
60	1208	789	1140	829															
65	1089	628	1025	666															
70	966	467	908	502															
75	843	309	791	342															
80	723	165	675	193															
85	617	52.8	570	70.8															
90	539	4.24	489	7.63															
95	482	5.59	440	5.33															
100	430	8.21	399	8.10															
105	383	11.1	360	11.3															
110	341	14.1	323	14.7															
115	302	17.1	289	17.9															
120	267	19.9	257	21.1															
125	235	22.6	227	24.2															
130	205	25.1	199	27.1															
135	177	29.0	172	31.1															
140	152	33.6	143	35.6															
145	131	38.0	121	40.1															
150	112	42.2	102	44.4															
155	94.0	46.1	86.9	48.5															
160	79.1	49.8	76.0	52.0															
165	66.5	52.9	56.0	54.7															
170	44.1	55.5	44.2	56.7															
175	34.7	57.6	36.7	58.0															
180	34.8	58.9	35.0	58.6															

C Range: 0 - 360DEG
 C Interval: 90.0DEG
 Test Speed: HIGH
 Temperature:25.3DEG
 Operators:
 Test Date:2023-04-16

y Range: 0 - 180DEG
 y Interval: 1.0DEG
 Test System:EVERFINE GO-2000A_V1 SYSTEM V2.00.446
 Humidity:65.0%
 Test Distance:8.600m [K=1.0000]
 Remarks: