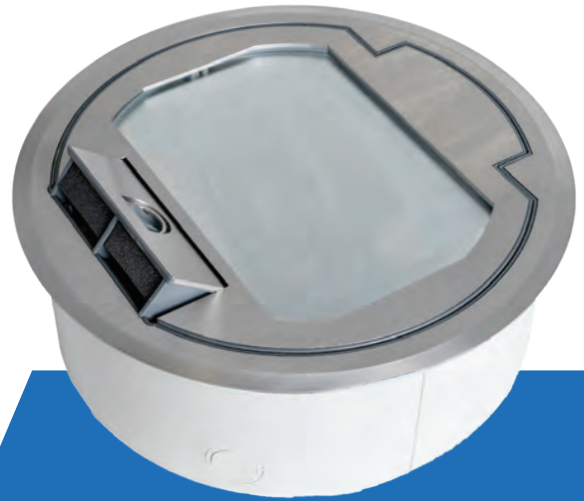


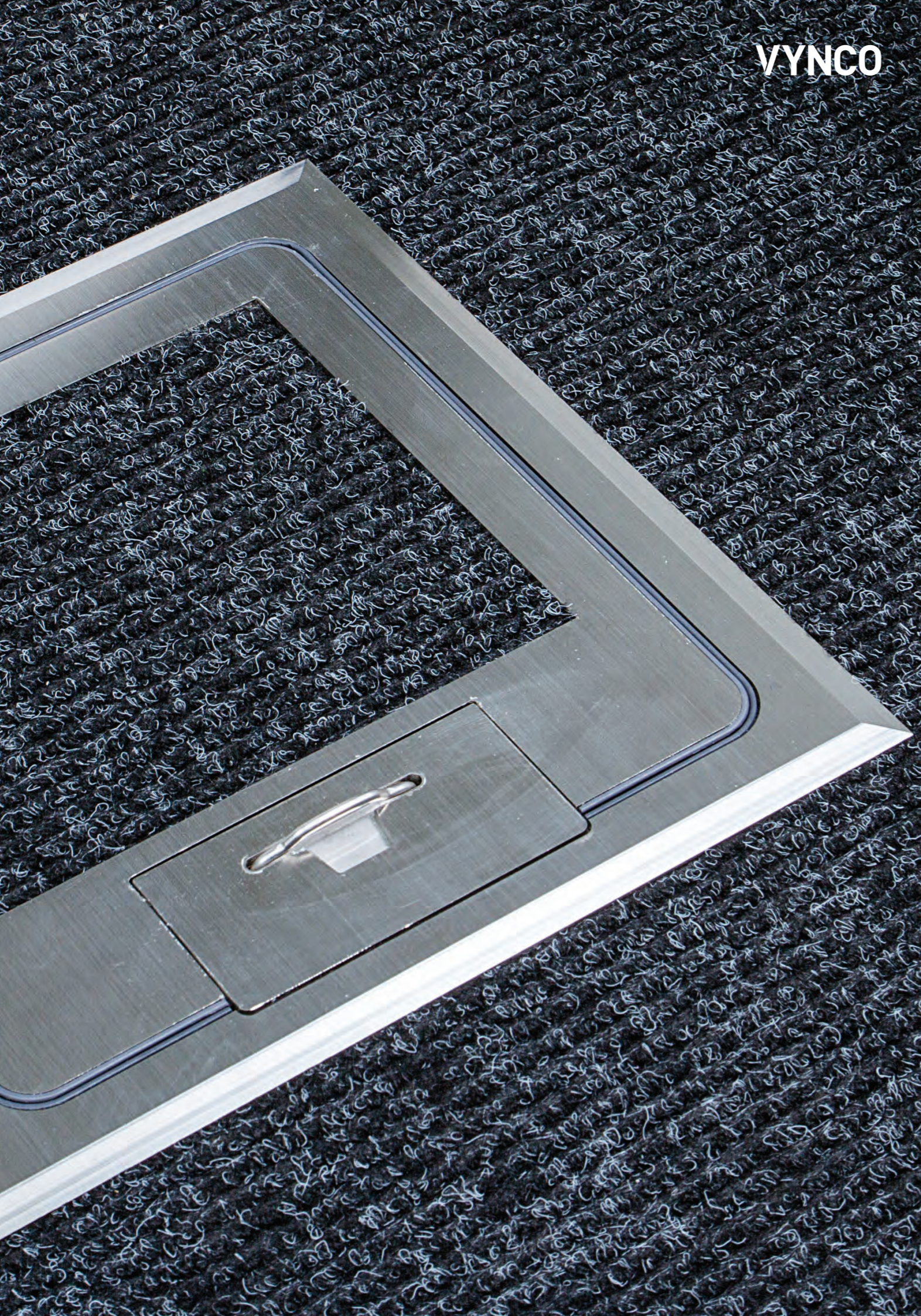
VYNCO



**FLOOR
BOXES**

**BASES
MADE
IN NZ**





FB2P

DEEP



STOCKED	
POWER	1 x Standard Double Socket Outlet
DATA	1 x Standard Double Data Plate
BOX SIZE (HxWxD)	240 x 150 x 110mm
LID SIZE (HxWxD)	266 x 176mm
LID POSITION	Surface Lid
LID STYLE	Polyamide 7mm Rebated

FB2P70

SHALLOW



STOCKED	
POWER	2 x Auto Switched Socket Outlets
DATA	3 x Modular Data Mounts
BOX SIZE (HxWxD)	240 x 150 x 70mm
LID SIZE (HxWxD)	266 x 176mm
LID POSITION	Surface Lid
LID STYLE	Polyamide 7mm Rebated

FB4P

DEEP



STOCKED	
POWER	2 x Standard Double Socket Outlets
DATA	2 x Standard Double Data Plates
BOX SIZE (HxWxD)	240 x 240 x 110mm
LID SIZE (HxWxD)	266 x 266mm
LID POSITION	Surface Lid
LID STYLE	Polyamide 7mm Rebated

FB4P70

SHALLOW



STOCKED	
POWER	4 x Auto Switched Socket Outlets
DATA	6 x Modular Data Mounts
BOX SIZE (HxWxD)	240 x 240 x 70mm
LID SIZE (HxWxD)	266 x 266mm
LID POSITION	Surface Lid
LID STYLE	Polyamide 7mm Rebated

FB6P

DEEP



STOCKED	
POWER	3 x Standard Double Socket Outlets
DATA	3 x Standard Double Data Plates
BOX SIZE (HxWxD)	360 x 240 x 110mm
LID SIZE (HxWxD)	386 x 266mm
LID POSITION	Surface Lid
LID STYLE	Polyamide 7mm Rebated

FB6P70

SHALLOW



INDENT	
POWER	8 x Auto Switched Socket Outlets
DATA	8 x Modular Data Mounts
BOX SIZE (HxWxD)	360 x 240 x 70mm
LID SIZE (HxWxD)	386 x 266mm
LID POSITION	Surface Lid
LID STYLE	Polyamide 7mm Rebated

FB2SF

DEEP



STOCKED	
POWER	1 x Standard Double Socket Outlets
DATA	1 x Standard Double Data Plates
BOX SIZE (HxWxD)	240 x 150 x 110mm
LID SIZE (HxWxD)	266 x 176mm
LID POSITION	Surface Lid
LID FINISH	Solid Stainless

FB2SF70

SHALLOW



STOCKED	
POWER	2 x Auto Switched Socket Outlets
DATA	3 x Modular Data Mounts
BOX SIZE (HxWxD)	240 x 150 x 70mm
LID SIZE (HxWxD)	266 x 176mm
LID POSITION	Surface Lid
LID FINISH	Solid Stainless

FB4SQF

DEEP



STOCKED	
POWER	2 x Standard Double Socket Outlets
DATA	2 x Standard Double Data Plates
BOX SIZE (HxWxD)	240x 240 x 110mm
LID SIZE (HxWxD)	266 x 266mm
LID POSITION	Flush Lid
LID FINISH	Solid Stainless

FB4SQF70

SHALLOW



INDENT	
POWER	4 x Auto Switched Socket Outlets
DATA	6 x Modular Data Mounts
BOX SIZE (HxWxD)	240 x 240 x 70mm
LID SIZE (HxWxD)	266 x 266mm
LID POSITION	Flush Lid
LID FINISH	Solid Stainless

FB4SF

DEEP



STOCKED	
POWER	2 x Standard Double Socket Outlets
DATA	2 x Standard Double Data Plates
BOX SIZE (HxWxD)	240 x 240 x 110mm
LID SIZE (HxWxD)	266 x 266mm
LID POSITION	Surface Lid
LID FINISH	Solid Stainless

FB4SF70

SHALLOW



INDENT	
POWER	4 x Auto Switched Socket Outlets
DATA	6 x Data Mounts
BOX SIZE (HxWxD)	240 x 240 x 70mm
LID SIZE (HxWxD)	266 x 266mm
LID POSITION	Surface Lid
LID FINISH	Solid Stainless

FB4SQR

DEEP



INDENT	
POWER	2 x Standard Double Socket Outlets
DATA	2 x Standard Double Data Plates
BOX SIZE (HxWxD)	240 x 240 x 110mm
LID SIZE (HxWxD)	266 x 266mm
LID POSITION	Flush Lid
LID STYLE	Stainless 6mm Rebated

FB4SQR70

SHALLOW



INDENT	
POWER	4 x Auto Switched Socket Outlets
DATA	6 x Modular Data Mounts
BOX SIZE (HxWxD)	240 x 240 x 70mm
LID SIZE (HxWxD)	266 x 266mm
LID POSITION	Flush Lid
LID STYLE	Stainless 6mm Rebated

FB4SR

DEEP



STOCKED	
POWER	2 x Standard Double Socket Outlets
DATA	2 x Standard Double Data Plates
BOX SIZE (HxWxD)	240x 240x 110mm
LID SIZE (HxWxD)	266 x 266mm
LID POSITION	Surface Lid
LID STYLE	Stainless 6mm Rebated

FB4SR70

SHALLOW



INDENT	
POWER	4 x Auto Switched Socket Outlets
DATA	6 x Modular Data Mounts
BOX SIZE (HxWxD)	240 x 240 x 70mm
LID SIZE (HxWxD)	266 x 266mm
LID POSITION	Surface Lid
LID STYLE	Stainless 6mm Rebated

FB6SF

DEEP



INDENT	
POWER	3 x Standard Double Socket Outlets
DATA	3 x Standard Double Data Plates
BOX SIZE (HxWxD)	360 x 240 x 110mm
LID SIZE (HxWxD)	386 x 266mm
LID POSITION	Surface Lid
LID FINISH	Solid Stainless

FB6SR

DEEP



INDENT	
POWER	3 x Standard Double Socket Outlets
DATA	3 x Standard Double Data Plates
BOX SIZE (HxWxD)	360 x 240 x 110mm
LID SIZE (HxWxD)	386 x 266 mm
LID POSITION	Surface Lid
LID STYLE	Stainless 6mm Rebated

FB5SF

DEEP



INDENT	
POWER	2 x Standard Double Socket Outlets
DATA	2 x Standard Double Data Plates
BOX SIZE (HxWxD)	Deep Ø 298 x 110mm
LID SIZE (HxWxD)	Ø 325mm
LID POSITION	Surface Lid
LID FINISH	Solid Stainless Soft Close

FB5SR

DEEP



INDENT	
POWER	2 x Standard Double Socket Outlets
DATA	2 x Standard Double Data Plates
BOX SIZE (HxWxD)	Deep Ø 298 x 110mm
LID SIZE (HxWxD)	Ø 325mm
LID POSITION	Surface Lid
LID FINISH	Stainless Soft Close 6mm Rebated

FB110



INDENT	
POWER	1 x Auto Switched Socket Outlet
DATA	N/A
BOX SIZE (HxWxD)	101 x 101 x 63mm
LID SIZE (HxWxD)	120 x 118mm
LID POSITION	Surface Lid
LID FINISH	Satin Alloy

FB111



INDENT	
POWER	N/A
DATA	2 x USB A Outlet
BOX SIZE (HxWxD)	101 x 101 x 63mm
LID SIZE (HxWxD)	120 x 118mm
LID POSITION	Surface Lid
LID FINISH	Satin Alloy

FB130

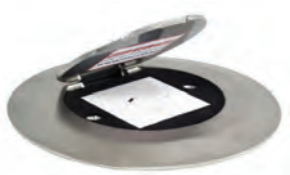
DEEP



STOCKED	
POWER	1 x Auto Switch Socket Outlet
DATA	N/A
BOX SIZE (HxWxD)	Ø 95 x 53mm
LID SIZE (HxWxD)	Ø 130mm
LID POSITION	Surface Lid
LID FINISH	Solid Stainless

FB130-LF

LID AND FRAME ONLY



INDENT	
POWER	1 x Auto Switch Socket Outlet
LID SIZE	Ø 130mm
LID POSITION	Surface Lid
LID FINISH	Solid Stainless
SUITABLE FOR	Retrofit

FB112



INDENT	
POWER	N/A
DATA	1 x USB A Outlet 1 x USB C Outlet
BOX SIZE (HxWxD)	101 x 101 x 63mm
LID SIZE (HxWxD)	120 x 118mm
LID POSITION	Surface Lid
LID FINISH	Satin Alloy

FB121



INDENT	
POWER	N/A
DATA	2 x Modular Data Mounts
BOX SIZE (HxWxD)	120 x 120 x 80mm
LID SIZE (HxWxD)	155 x 145mm
LID POSITION	Surface Lid
LID FINISH	Satin Alloy

FB175

DEEP



STOCKED	
POWER	1 x Standard Double Socket Outlet
DATA	3 x Modular Data Mounts
BOX SIZE (HxWxD)	125 x 125 x 110mm
LID SIZE (HxWxD)	Ø 175mm
LID POSITION	Surface Lid
LID FINISH	Solid Stainless

FB120



STOCKED	
POWER	2 x Auto Switched Socket Outlets
DATA	N/A
BOX SIZE (HxWxD)	120 x 120 x 80mm
LID SIZE (HxWxD)	155 x 145mm
LID POSITION	Surface Lid
LID FINISH	Satin Alloy

FB124

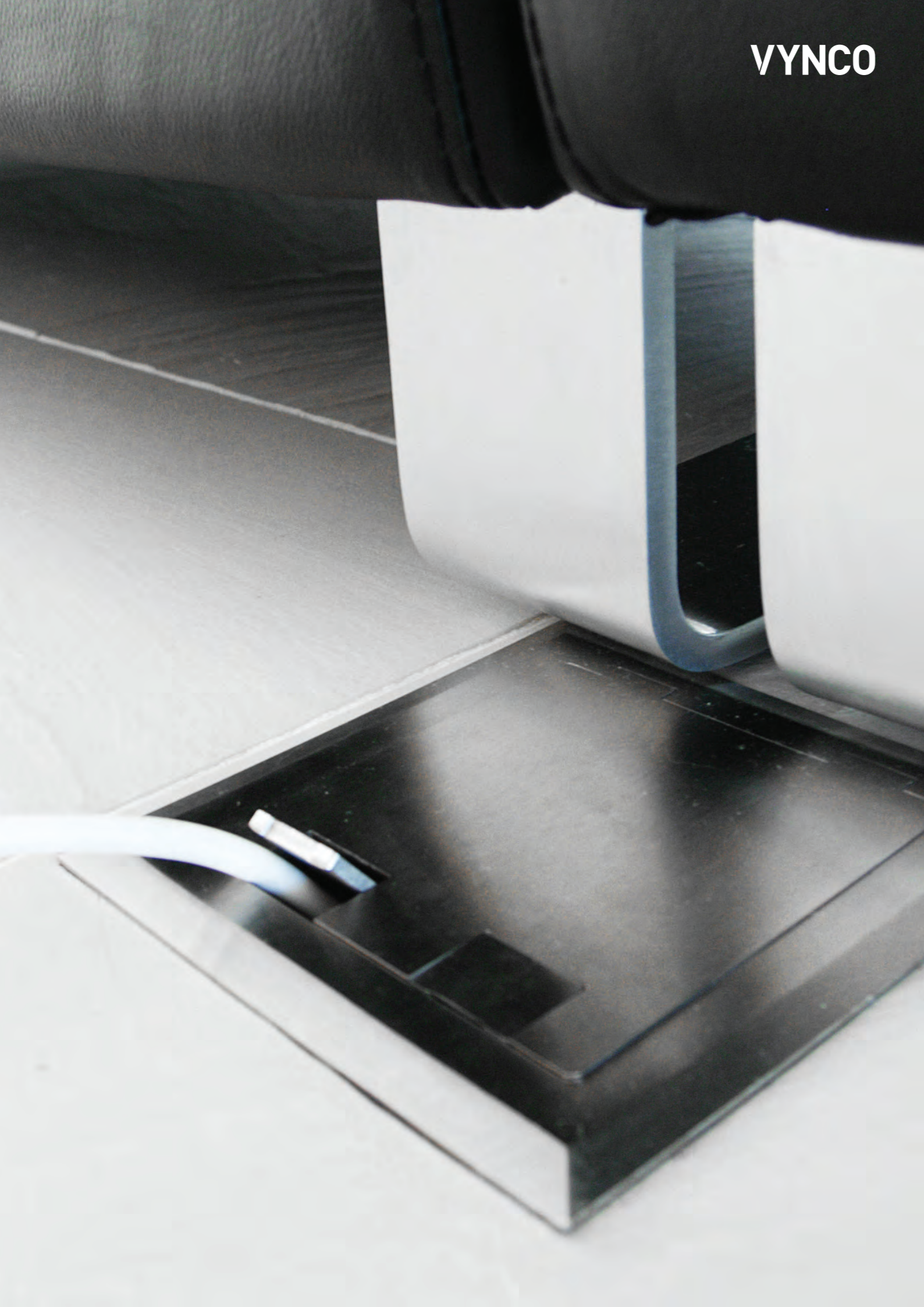


INDENT	
POWER	1 x Auto Switched Socket Outlet
DATA	2 x USB A Outlet
BOX SIZE (HxWxD)	120 x 120 x 63mm
LID SIZE (HxWxD)	155 x 146mm
LID POSITION	Surface Lid
LID FINISH	Satin Alloy

FB125



STOCKED	
POWER	1 x Auto Switched Socket Outlet
DATA	1 x USB A Outlet 1 x USB C Outlet
BOX SIZE (HxWxD)	120 x 120 x 63mm
LID SIZE (HxWxD)	155 x 146mm
LID POSITION	Surface Lid
LID FINISH	Satin Alloy



FB142

SHALLOW



STOCKED	
POWER	2 x Auto Switched Socket Outlets
DATA	N/A
BOX SIZE (HxWxD)	135 x 126 x 65mm
LID SIZE (HxWxD)	145 x 145mm
LID POSITION	Surface Lid
LID FINISH	Solid Brass

FB143

SHALLOW



STOCKED	
POWER	2 x Auto Switched Socket Outlet
DATA	N/A
BOX SIZE (HxWxD)	135 x 126 x 65mm
LID SIZE (HxWxD)	145 x 145mm
LID POSITION	Surface Lid
LID FINISH	Solid Stainless

FB147

DEEP



STOCKED	
POWER	1 x Standard Double Socket Outlet
DATA	1 x 3-Gang Architrave Data Plate
BOX SIZE (HxWxD)	135 x 126 x 95mm
LID SIZE (HxWxD)	145 x 145mm
LID POSITION	Surface Lid
LID FINISH	Solid Brass

FB148

DEEP



STOCKED	
POWER	1 x Standard Double Socket Outlet
DATA	3 x Modular Data Mounts
BOX SIZE (HxWxD)	135 x 126 x 95mm
LID SIZE (HxWxD)	145 x 145mm
LID POSITION	Surface Lid
LID FINISH	Solid Stainless

FB2SDR

DEEP



INDENT	
POWER	1 x Standard Double Socket Outlet
DATA	1 x Standard Double Data Plates
BOX SIZE (HxWxD)	240 x 150 x 133mm
LID SIZE (HxWxD)	250 x 160mm
LID POSITION	Flush Lid
LID STYLE	Stainless Soft Close 23mm Rebated

FB2SDR70

SHALLOW



INDENT	
POWER	2 x Auto Switched Socket Outlets
DATA	3 x Modular Data Mounts
BOX SIZE (HxWxD)	240 x 150 x 95mm
LID SIZE (HxWxD)	250 x 160mm
LID POSITION	Flush Lid
LID STYLE	Stainless Soft Close 23mm Rebated

FB4SHD

DEEP



STOCKED	
POWER	2 x Standard Double Socket Outlets
DATA	2 x Standard Double Data Plates
BOX SIZE (HxWxD)	240 x 240 x 120mm
LID SIZE (HxWxD)	275 x 275mm
LID POSITION	Flush Lid
LID FINISH	Heavy Duty Soft Close Solid Stainless

FBIP2P2DNC

DEEP



INDENT	
POWER	2 x Auto Switched Socket Outlets ¹
DATA	2 x Modular Data Mounts
BOX SIZE (HxWxD)	Ø 130 x 100mm
LID SIZE (HxWxD)	Ø 150mm
LID POSITION	Surface Lid
LID FINISH	Nickel IP66 (when closed)

¹ Outlets NOT IP Rated

FB4SDR

DEEP



INDENT	
POWER	2 x Standard Double Socket Outlets
DATA	2 x Standard Double Data Plates
BOX SIZE (HxWxD)	240 x 240 x 133mm
LID SIZE (HxWxD)	250 x 250mm
LID POSITION	Flush Lid
LID STYLE	Stainless Soft Close 23mm Rebated

FB4SDR70

SHALLOW



INDENT	
POWER	4 x Auto Switched Socket Outlets
DATA	6 x Modular Data Mounts
BOX SIZE (HxWxD)	240 x 240 x 93mm
LID SIZE (HxWxD)	250 x 250mm
LID POSITION	Flush Lid
LID STYLE	Stainless Soft Close 23mm Rebated

FB149

DEEP



STOCKED	
POWER	1 x Standard Double Socket Outlet
DATA	1 x 3-Gang Architrave Data Plate
BOX SIZE (HxWxD)	135 x 130 x 100mm
LID SIZE (HxWxD)	150 x 150 x 20mm
LID POSITION	Flush Lid
LID STYLE	Stainless Soft Close 23mm Rebated

AFB20SS



STOCKED	
POWER	1 x Standard Double Socket Outlet
DATA	1 x Standard Double Data Plate
BOX SIZE (HxWxD)	110 x 125 x 110mm
FINISH	Solid Stainless

AFB202SS



STOCKED	
POWER	2 x Standard Double Socket Outlets
DATA	2 x Standard Double Data Plates
BOX SIZE (HxWxD)	110 x 250 x 110mm
FINISH	Solid Stainless

AFB70SS



INDENT	
POWER	1 x Double Slimline Socket Outlet
DATA	5 x Data Mounts
BOX SIZE (HxWxD)	165 x 110 x 65mm
FINISH	Solid Stainless

AFB3510A2DBK



INDENT	
POWER	1 x Auto Switched Socket Outlet
DATA	2 x Modular Data Mounts
BOX SIZE (HxWxD)	160 x 127 x 50mm
FINISH	Black Powder Coated

MADE IN NZ BASES

Vynco's manufacturing plant based in Christchurch specialises in metal fabrication with a vast array of specialty equipment.

Our Floorbox Box Ahead programme utilises our local manufacturing to provide you a quick turnaround of base boxes, even in large numbers.

This means you can install the bases at the construction stage, and have lids supplied at the fit-off stage.

BASES MADE IN NZ

HIGH VOLUMES WITHOUT DELAY

FAST TURN AROUND



VYNCO

DISCLAIMER

The information in this catalogue is presented as general information and no warranty is expressly or impliedly given as to its accuracy, completeness or correctness. It does not constitute part of a legal offer or contract. This catalogue may unintentionally include inaccuracies or errors. By using or accessing this brochure you agree with the Disclaimer without any qualification or limitation and agree that Vynco Industries (NZ) Ltd will not be liable for any or all damages or losses incurred from the use of this catalogue.

Christchurch Office

388-396 Tuam Street,
Philipstown, Christchurch 8011
PO Box 9022, Tower Junction,
Christchurch 8149
P +64 3 379 9283
E sales@vynco.co.nz

Auckland Office

9 Levene Place,
Mount Wellington, Auckland 1060
PO 12 249 Penrose,
Auckland 1061
P +64 9 525 6051
E sales@vynco.co.nz

VYNCO.CO.NZ