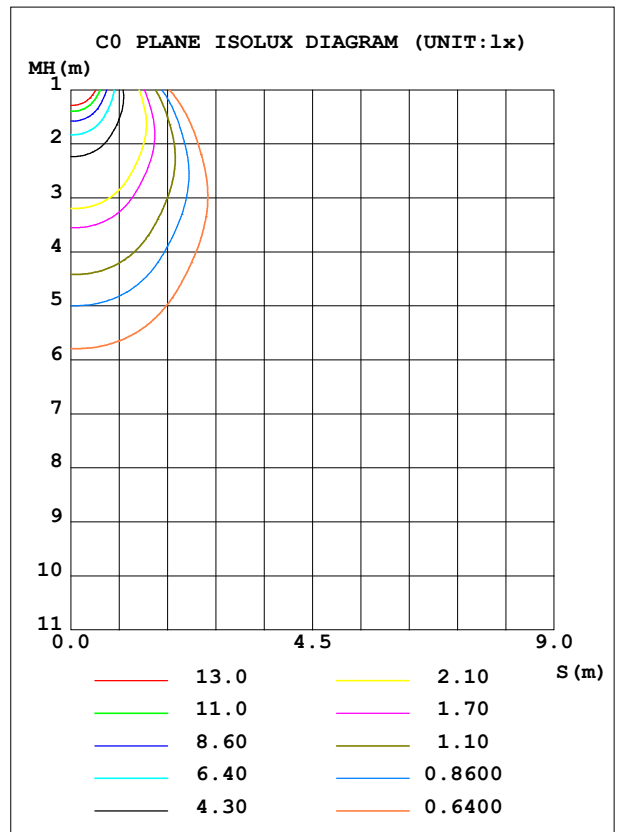
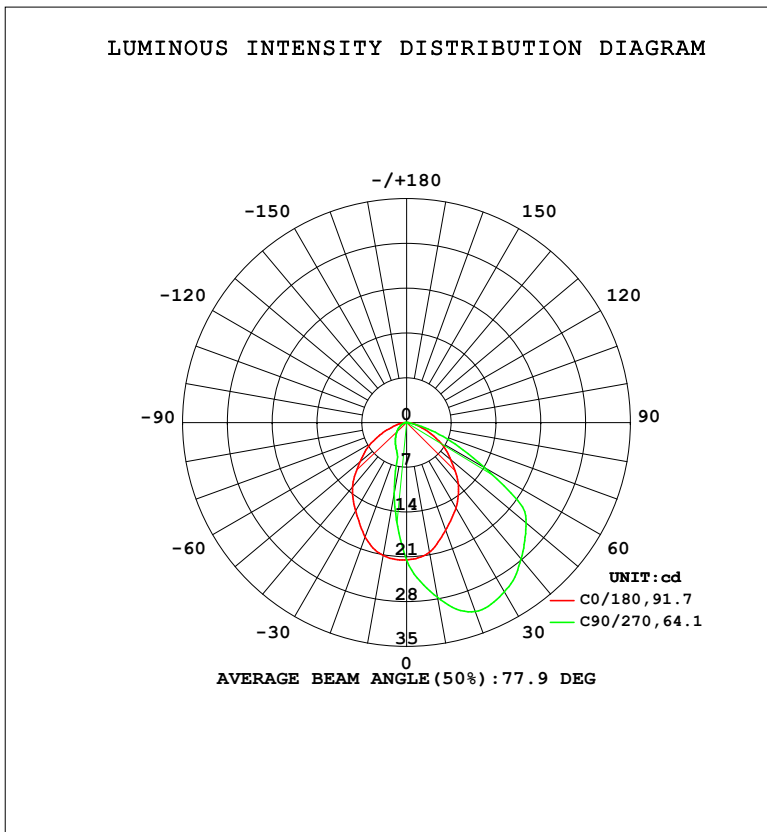


LUMINAIRE PHOTOMETRIC TEST REPORT

Test:U:230.37V I:0.0162A P:3.1314W PF:0.8394 Freq:49.99Hz		
UTHDi:0.00% ITHDi:0.00% KDisp:0 Lamp Flux:49.579x1 lm		
Name: DL195-2.5-3W-P3	Type: 3W	Weight:
SPEC.: 4000K	DIM.:	Instrument No.: HUP-IES-B3
MFR.: EVERFINE	SUR.: 0.057*0.037	shielding angle:

DATA OF LAMP		PHOTOMETRIC DATA				Eff: 15.83 lm/W
MODEL	DL195-2.5-3W-P3	I _{max} (cd)	31.52	S/MH (C0/180)	1.12	
NOMINAL POWER (W)	3	LOR (%)	100.0	S/MH (C90/270)	1.84	
RATED VOLTAGE (V)	230	TOTAL FLUX (lm)	49.579	η UP, DN (C0-180)	0.0, 22.4	
NOMINAL FLUX (lm)	49.579	CIE CLASS	DIRECT	η UP, DN (C180-360)	0.0, 77.6	
LAMPS INSIDE	1	η up (%)	0.0	CIBSE SHR NOM	1.00	
TEST VOLTAGE (V)	230	η down (%)	100.0	CIBSE SHR MAX	1.05	



C Range: 0 - 360DEG
 C Interval: 45.0DEG
 Test Speed: HIGH
 Temperature: 25.3 °C
 Operators: Chen Songyu
 Test Date: 2025-12-09

γ Range: 0 - 90DEG
 γ Interval: 1.0DEG
 Test System: EVERFINE GO-2000H_V1 SYSTEM V2.00.456
 Humidity: 65.0%
 Test Distance: 9.520m [K=1.0000]
 Remarks:

ZONAL FLUX DIAGRAM

ZONAL FLUX DIAGRAM:

γ	C0	C45	C90	C135	C180	C225	C270	C315	γ	Φ zone	Φ total	%lum,lamp
10	21.10	14.19	11.26	14.01	20.59	25.58	27.70	25.89	0- 10	1.970	1.970	3.97,3.97
20	19.01	5.994	4.664	5.775	17.87	26.89	31.44	28.28	10- 20	5.287	7.257	14.6,14.6
30	15.96	4.135	3.562	4.104	15.42	25.37	30.58	26.87	20- 30	7.677	14.93	30.1,30.1
40	13.15	3.170	2.651	3.144	12.61	22.83	27.84	23.31	30- 40	9.206	24.14	48.7,48.7
50	9.498	2.304	1.880	2.278	9.028	19.11	24.41	19.53	40- 50	9.518	33.66	67.9,67.9
60	6.366	1.532	1.225	1.519	5.894	14.21	14.06	14.59	50- 60	8.366	42.02	84.8,84.8
70	2.978	0.8901	0.6936	0.8788	2.752	6.156	5.419	6.168	60- 70	5.247	47.27	95.3,95.3
80	1.070	0.3609	0.2814	0.3519	1.040	1.218	0.7330	1.189	70- 80	1.957	49.23	99.3,99.3
90	0.0318	0.0318	0.0435	0.0404	0.0318	0.0231	0.0203	0.0231	80- 90	0.3502	49.58	100,100
100									90-100			
110									100-110			
120									110-120			
130									120-130			
140									130-140			
150									140-150			
160									150-160			
170									160-170			
180									170-180			
DEG	LUMINOUS INTENSITY:cd									UNIT:lm		

Conical surface Flux(90deg): 28.945 lm

%lum = 58.4%

%lamp = 58.4%

Conical surface Flux(120deg): 42.024 lm

%lum = 84.8%

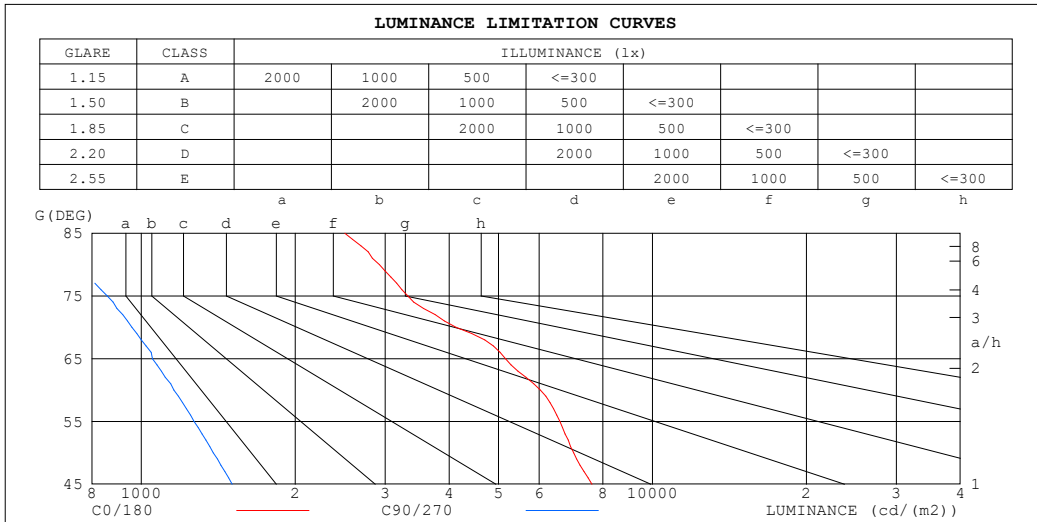
%lamp = 84.8%

C Range: 0 - 360DEG
 C Interval: 45.0DEG
 Test Speed: HIGH
 Temperature:25.3℃
 Operators:Chen Songyu
 Test Date:2025-12-09

γ Range: 0 - 90DEG
 γ Interval: 1.0DEG
 Test System:EVERFINE GO-2000H_V1 SYSTEM V2.00.456
 Humidity:65.0%
 Test Distance:9.520m [K=1.0000]
 Remarks:

LUMINANCE LIMITATION CURVES

Test:U:230.37V I:0.0162A P:3.1314W PF:0.8394 Freq:49.99Hz UTHDi:0.00% ITHDi:0.00% KDisp:0 Lamp Flux:49.579x1 lm		
Name: DL195-2.5-3W-P3	Type: 3W	Weight:
SPEC.: 4000K	DIM.:	Instrument No.: HUP-IES-B3
MFR.: EVERFINE	SUR.: 0.057*0.037	shielding angle:



LUMINANCE cd/(m2)		
G (DEG)	C0/180	C90/270
85	2502	724
80	2923	766
75	3323	858
70	4129	959
65	5162	1051
60	6038	1158
55	6589	1268
50	7008	1383
45	7611	1505

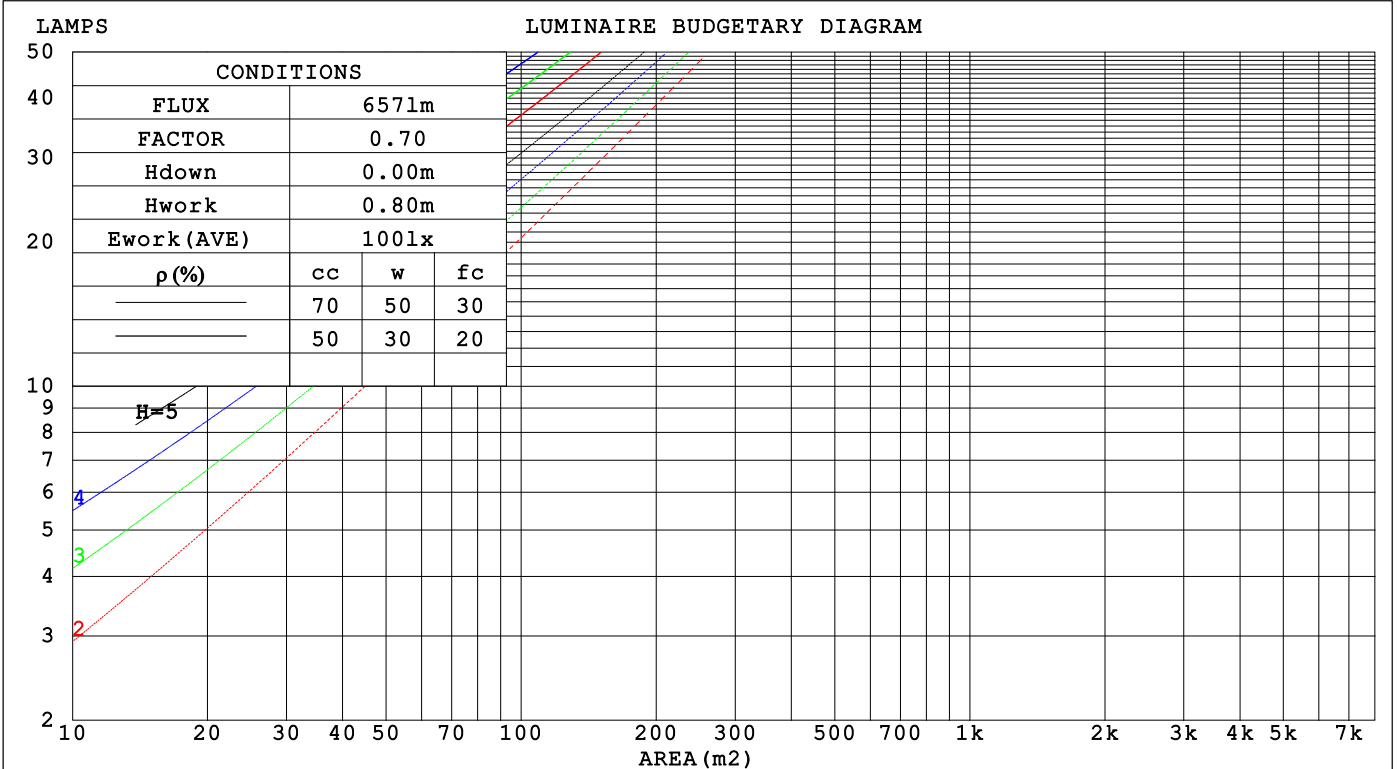
C Range: 0 - 360DEG
 C Interval: 45.0DEG
 Test Speed: HIGH
 Temperature: 25.3 °C
 Operators: Chen Songyu
 Test Date: 2025-12-09

γ Range: 0 - 90DEG
 γ Interval: 1.0DEG
 Test System: EVERFINE GO-2000H_V1 SYSTEM V2.00.456
 Humidity: 65.0%
 Test Distance: 9.520m [K=1.0000]
 Remarks:

CU AND LUMINAIRE BUDGETARY ESTIMATE DIAGRAM

Test:U:230.37V I:0.0162A P:3.1314W PF:0.8394 Freq:49.99Hz		
UTHdi:0.00% ITHdi:0.00% KDisp:0 Lamp Flux:49.579x1 lm		
Name: DL195-2.5-3W-P3	Type: 3W	Weight:
SPEC.: 4000K	DIM.:	Instrument No.: HUP-IES-B3
MFR.: EVERFINE	SUR.: 0.057*0.037	shielding angle:

pcc	80%			70%			50%			30%			10%			0
pw	50%	30%	10%	50%	30%	10%	50%	30%	10%	50%	30%	10%	50%	30%	10%	0
pfc	20%			20%			20%			20%			20%			0
RCR	RCR:Room Cavity Ratio						Coefficients of Utilization(CU)									
0.0	1.19	1.19	1.19	1.16	1.16	1.16	1.11	1.11	1.11	1.06	1.06	1.06	1.02	1.02	1.02	1.00
1.0	1.06	1.02	.98	1.03	.00	.97	.99	.96	.94	.95	.93	.91	.92	.90	.88	.86
2.0	.93	.87	.81	.91	.85	.80	.88	.83	.78	.84	.80	.77	.81	.78	.75	.73
3.0	.82	.74	.68	.81	.73	.68	.78	.72	.67	.75	.70	.65	.72	.68	.64	.62
4.0	.73	.65	.58	.72	.64	.58	.69	.62	.57	.67	.61	.56	.65	.60	.56	.53
5.0	.65	.57	.50	.64	.56	.50	.62	.55	.50	.60	.54	.49	.58	.53	.49	.47
6.0	.59	.50	.44	.58	.50	.44	.56	.49	.44	.55	.48	.43	.53	.47	.43	.41
7.0	.54	.45	.39	.53	.45	.39	.51	.44	.39	.50	.43	.38	.49	.43	.38	.36
8.0	.49	.41	.35	.48	.40	.35	.47	.40	.35	.46	.39	.34	.45	.39	.34	.32
9.0	.45	.37	.32	.44	.37	.31	.43	.36	.31	.42	.36	.31	.41	.35	.31	.29
10.0	.42	.34	.29	.41	.34	.29	.40	.33	.28	.39	.33	.28	.38	.32	.28	.27



C Range: 0 - 360DEG
 C Interval: 45.0DEG
 Test Speed: HIGH
 Temperature:25.3°C
 Operators:Chen Songyu
 Test Date:2025-12-09

γ Range: 0 - 90DEG
 γ Interval: 1.0DEG
 Test System:EVERFINE GO-2000H_V1 SYSTEM V2.00.456
 Humidity:65.0%
 Test Distance:9.520m [K=1.0000]
 Remarks:

WEC AND CCEC

Test:U:230.37V I:0.0162A P:3.1314W PF:0.8394 Freq:49.99Hz		
UTHDi:0.00% ITHDi:0.00% KDisp:0 Lamp Flux:49.579x1 lm		
Name: DL195-2.5-3W-P3	Type: 3W	Weight:
SPEC.: 4000K	DIM.:	Instrument No.: HUP-IES-B3
MFR.: EVERFINE	SUR.: 0.057*0.037	shielding angle:

ρ_{CC}	80%			70%			50%			30%			10%			0
ρ_w	50%	30%	10%	50%	30%	10%	50%	30%	10%	50%	30%	10%	50%	30%	10%	0
ρ_{fc}	20%			20%			20%			20%			20%			0
RCR	RCR:Room Cavity Ratio						Wall Exitance Coefficients(WEC)									
0.0																
1.0	.277	.158	.050	.270	.154	.049	.257	.148	.047	.245	.141	.045	.234	.136	.044	
2.0	.268	.147	.045	.262	.144	.044	.250	.139	.043	.240	.135	.042	.230	.130	.041	
3.0	.252	.134	.040	.247	.132	.040	.237	.128	.039	.227	.125	.038	.219	.121	.037	
4.0	.236	.123	.036	.231	.121	.036	.222	.118	.035	.214	.115	.035	.206	.112	.034	
5.0	.220	.112	.032	.216	.111	.032	.208	.108	.032	.200	.106	.031	.193	.103	.031	
6.0	.205	.103	.029	.202	.102	.029	.194	.100	.029	.188	.098	.029	.182	.096	.028	
7.0	.192	.095	.027	.189	.094	.027	.182	.092	.027	.176	.090	.026	.171	.089	.026	
8.0	.180	.088	.025	.177	.087	.025	.171	.086	.024	.166	.084	.024	.161	.083	.024	
9.0	.169	.082	.023	.167	.081	.023	.162	.080	.023	.157	.079	.022	.152	.077	.022	
10.0	.160	.077	.021	.157	.076	.021	.153	.075	.021	.148	.074	.021	.144	.072	.021	

ρ_{CC}	80%			70%			50%			30%			10%			0
ρ_w	50%	30%	10%	50%	30%	10%	50%	30%	10%	50%	30%	10%	50%	30%	10%	0
ρ_{fc}	20%			20%			20%			20%			20%			0
RCR	RCR:Room Cavity Ratio						Ceiling Cavity Exitance Coefficients(CCEC)									
0.0	.190	.190	.190	.163	.163	.163	.111	.111	.111	.064	.064	.064	.020	.020	.020	
1.0	.178	.156	.137	.152	.134	.118	.104	.092	.082	.060	.053	.047	.019	.017	.015	
2.0	.169	.132	.101	.145	.114	.087	.099	.079	.061	.057	.046	.036	.018	.015	.012	
3.0	.161	.114	.077	.138	.098	.067	.095	.068	.047	.055	.040	.028	.018	.013	.009	
4.0	.154	.101	.060	.132	.087	.052	.091	.061	.037	.052	.036	.022	.017	.012	.007	
5.0	.146	.090	.049	.126	.078	.042	.087	.055	.030	.050	.032	.018	.016	.010	.006	
6.0	.139	.082	.040	.120	.071	.035	.083	.050	.025	.048	.029	.015	.015	.010	.005	
7.0	.133	.075	.034	.114	.065	.030	.079	.045	.021	.046	.027	.013	.015	.009	.004	
8.0	.127	.069	.029	.109	.060	.026	.075	.042	.018	.044	.025	.011	.014	.008	.004	
9.0	.121	.064	.026	.104	.056	.022	.072	.039	.016	.042	.023	.010	.014	.008	.003	
10.0	.115	.060	.023	.099	.052	.020	.069	.037	.014	.040	.022	.008	.013	.007	.003	

C Range: 0 - 360DEG
 C Interval: 45.0DEG
 Test Speed: HIGH
 Temperature:25.3℃
 Operators:Chen Songyu
 Test Date:2025-12-09

γ Range: 0 - 90DEG
 γ Interval: 1.0DEG
 Test System:EVERFINE GO-2000H_V1 SYSTEM V2.00.456
 Humidity:65.0%
 Test Distance:9.520m [K=1.0000]
 Remarks:

UGR(Unified Glare Rating) Table

Test:U:230.37V I:0.0162A P:3.1314W PF:0.8394 Freq:49.99Hz UTHDi:0.00% ITHDi:0.00% KDisp:0 Lamp Flux:49.579x1 lm		
Name: DL195-2.5-3W-P3	Type: 3W	Weight:
SPEC.: 4000K	DIM.:	Instrument No.: HUP-IES-B3
MFR.: EVERFINE	SUR.: 0.057*0.037	shielding angle:

ceiling/cavity	0.7	0.7	0.5	0.5	0.3	0.7	0.7	0.5	0.5	0.3
walls	0.5	0.3	0.5	0.3	0.3	0.5	0.3	0.5	0.3	0.3
working plane	0.2	0.2	0.2	0.2	0.2	0.2	0.2	0.2	0.2	0.2

Room dimensions	Viewed crosswise					Viewed endwise				
x = 2H y = 2H	16.6	18.0	16.8	18.2	18.4	8.4	9.9	8.7	10.1	10.3
3H	17.8	19.2	18.1	19.4	19.6	9.5	10.8	9.8	11.0	11.3
4H	18.2	19.5	18.5	19.7	20.0	9.9	11.1	10.2	11.4	11.6
6H	18.5	19.7	18.8	20.0	20.2	10.1	11.3	10.5	11.6	11.9
8H	18.6	19.8	18.9	20.0	20.3	10.2	11.4	10.6	11.7	11.9
12H	18.7	19.8	19.0	20.1	20.4	10.3	11.4	10.6	11.7	12.0
4H 2H	16.4	17.7	16.7	17.9	18.2	9.6	10.9	10.0	11.2	11.4
3H	17.8	18.9	18.2	19.2	19.5	10.7	11.8	11.1	12.1	12.4
4H	18.3	19.3	18.7	19.6	20.0	11.2	12.2	11.5	12.5	12.8
6H	18.7	19.6	19.1	20.0	20.3	11.5	12.4	11.9	12.7	13.1
8H	18.9	19.7	19.3	20.1	20.5	11.6	12.5	12.0	12.8	13.2
12H	19.0	19.8	19.5	20.2	20.6	11.7	12.5	12.1	12.8	13.2
8H 4H	18.3	19.1	18.7	19.4	19.8	11.6	12.5	12.1	12.8	13.2
6H	18.8	19.4	19.2	19.8	20.3	12.1	12.8	12.5	13.2	13.6
8H	19.0	19.6	19.4	20.0	20.5	12.3	12.9	12.7	13.3	13.7
12H	19.2	19.7	19.6	20.1	20.6	12.4	12.9	12.9	13.4	13.9
12H 4H	18.2	19.0	18.6	19.4	19.8	11.7	12.5	12.2	12.9	13.3
6H	18.7	19.3	19.2	19.8	20.2	12.2	12.8	12.7	13.2	13.7
8H	19.0	19.5	19.5	19.9	20.4	12.4	12.9	12.9	13.4	13.9

Variations with the observer position at spacings(CIE Pub.117):		
S = 1.0H	+ 0.5 / - 0.2	+ 0.3 / - 0.5
1.5H	+ 1.2 / - 1.1	+ 0.2 / - 0.3
2.0H	+ 1.9 / - 2.4	+ 0.4 / - 0.7

CIE Pub.117, 49.58 lm Total Lamp Luminous Flux Corrected (8log(F/F0) = -10.4)
 Area: 0.002109 m2

C Range: 0 - 360DEG	γ Range: 0 - 90DEG
C Interval: 45.0DEG	γ Interval: 1.0DEG
Test Speed: HIGH	Test System:EVERFINE GO-2000H_V1 SYSTEM V2.00.456
Temperature:25.3℃	Humidity:65.0%
Operators:Chen Songyu	Test Distance:9.520m [K=1.0000]
Test Date:2025-12-09	Remarks:

UTILIZATION FACTORS TABLE

Test:U:230.37V I:0.0162A P:3.1314W PF:0.8394 Freq:49.99Hz UTHDi:0.00% ITHDi:0.00% KDisp:0 Lamp Flux:49.579x1 lm		
Name: DL195-2.5-3W-P3	Type: 3W	Weight:
SPEC.: 4000K	DIM.:	Instrument No.: HUP-IES-B3
MFR.: EVERFINE	SUR.: 0.057*0.037	shielding angle:

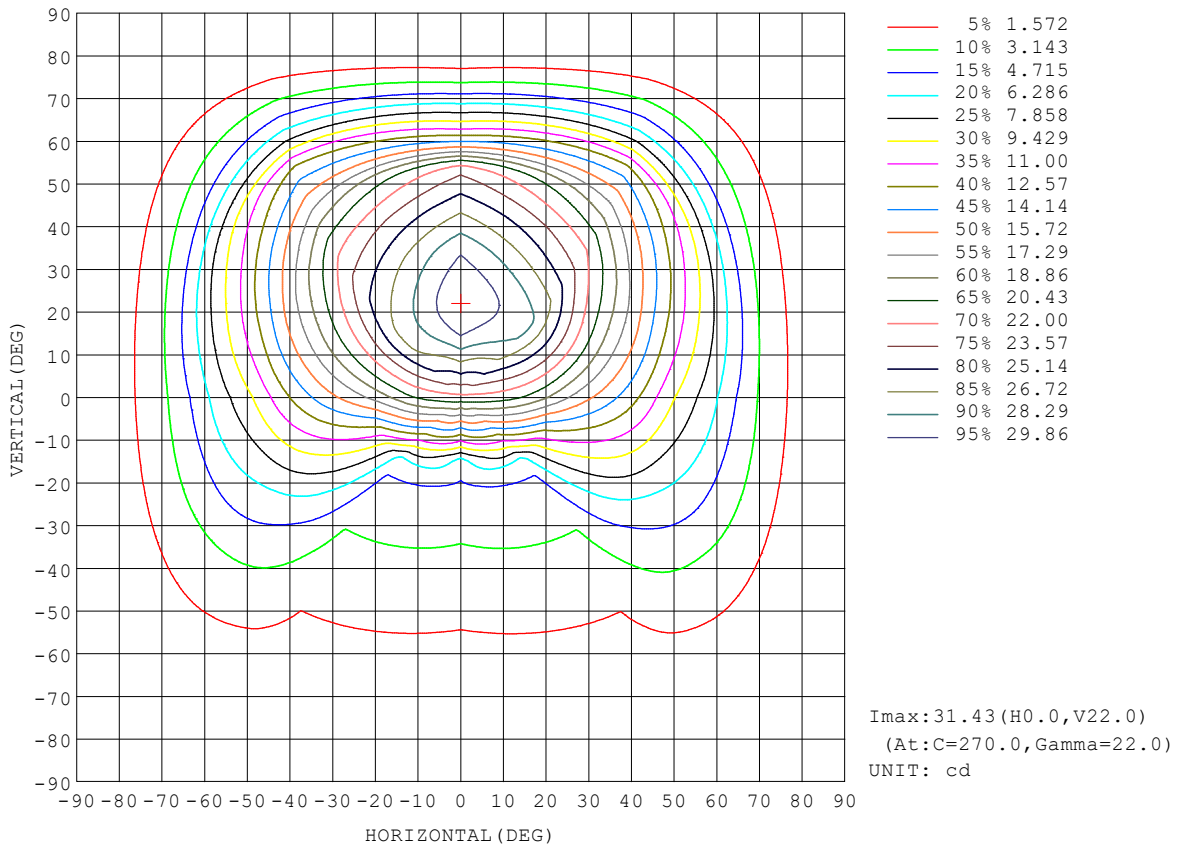
REFLECTANCE										
Ceiling	0.8	0.8	0.8	0.7	0.7	0.7	0.5	0.5	0.5	0
Walls	0.7	0.5	0.3	0.7	0.5	0.3	0.7	0.5	0.3	0
Working plane	0.2	0.2	0.2	0.2	0.2	0.2	0.2	0.2	0.2	0
ROOM INDEX	UTILIZATION FACTORS (PERCENT) $k(RI) \times RCR = 5$									
k = 0.60	59	48	41	59	48	41	58	47	41	35
0.80	70	59	52	69	58	51	67	58	51	44
1.00	79	68	61	77	68	61	75	69	60	54
1.25	86	76	69	84	75	69	82	74	68	61
1.50	91	81	75	89	81	74	86	79	73	66
2.00	97	89	84	95	88	83	92	86	81	74
2.50	101	94	88	99	92	87	95	90	85	78
3.00	104	98	93	102	96	92	98	93	90	81
4.00	108	103	98	105	101	97	101	97	94	86
5.00	110	105	102	107	104	100	103	100	97	88
ROOM INDEX	UF(total)									Direct
According to DIN EN 13032-2 2004			Suspended				SHRNOM = 1.25			

C Range: 0 - 360DEG
 C Interval: 45.0DEG
 Test Speed: HIGH
 Temperature:25.3°C
 Operators:Chen Songyu
 Test Date:2025-12-09

γ Range: 0 - 90DEG
 γ Interval: 1.0DEG
 Test System:EVERFINE GO-2000H_V1 SYSTEM V2.00.456
 Humidity:65.0%
 Test Distance:9.520m [K=1.0000]
 Remarks:

ISOCANDELA DIAGRAM

Test:U:230.37V I:0.0162A P:3.1314W PF:0.8394 Freq:49.99Hz UTHDi:0.00% ITHDi:0.00% KDisp:0 Lamp Flux:49.579x1 lm		
Name: DL195-2.5-3W-P3	Type: 3W	Weight:
SPEC.: 4000K	DIM.:	Instrument No.: HUP-IES-B3
MFR.: EVERFINE	SUR.: 0.057*0.037	shielding angle:

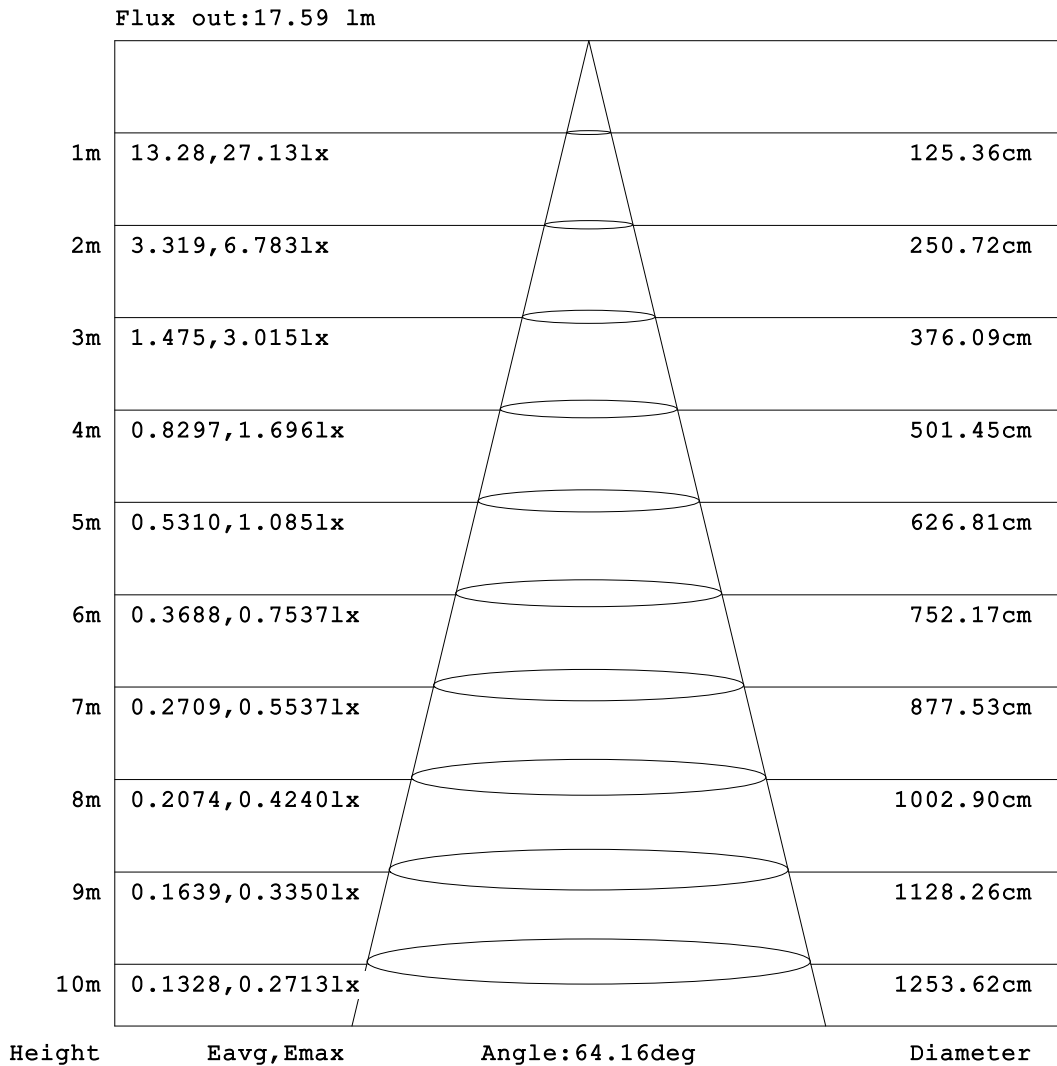


C Range: 0 - 360DEG
 C Interval: 45.0DEG
 Test Speed: HIGH
 Temperature: 25.3°C
 Operators: Chen Songyu
 Test Date: 2025-12-09

γ Range: 0 - 90DEG
 γ Interval: 1.0DEG
 Test System: EVERFINE GO-2000H_V1 SYSTEM V2.00.456
 Humidity: 65.0%
 Test Distance: 9.520m [K=1.0000]
 Remarks:

AAI Figure

Test:U:230.37V I:0.0162A P:3.1314W PF:0.8394 Freq:49.99Hz UTHDi:0.00% ITHDi:0.00% KDisp:0 Lamp Flux:49.579x1 lm		
Name: DL195-2.5-3W-P3	Type: 3W	Weight:
SPEC.: 4000K	DIM.:	Instrument No.: HUP-IES-B3
MFR.: EVERFINE	SUR.: 0.057*0.037	shielding angle:



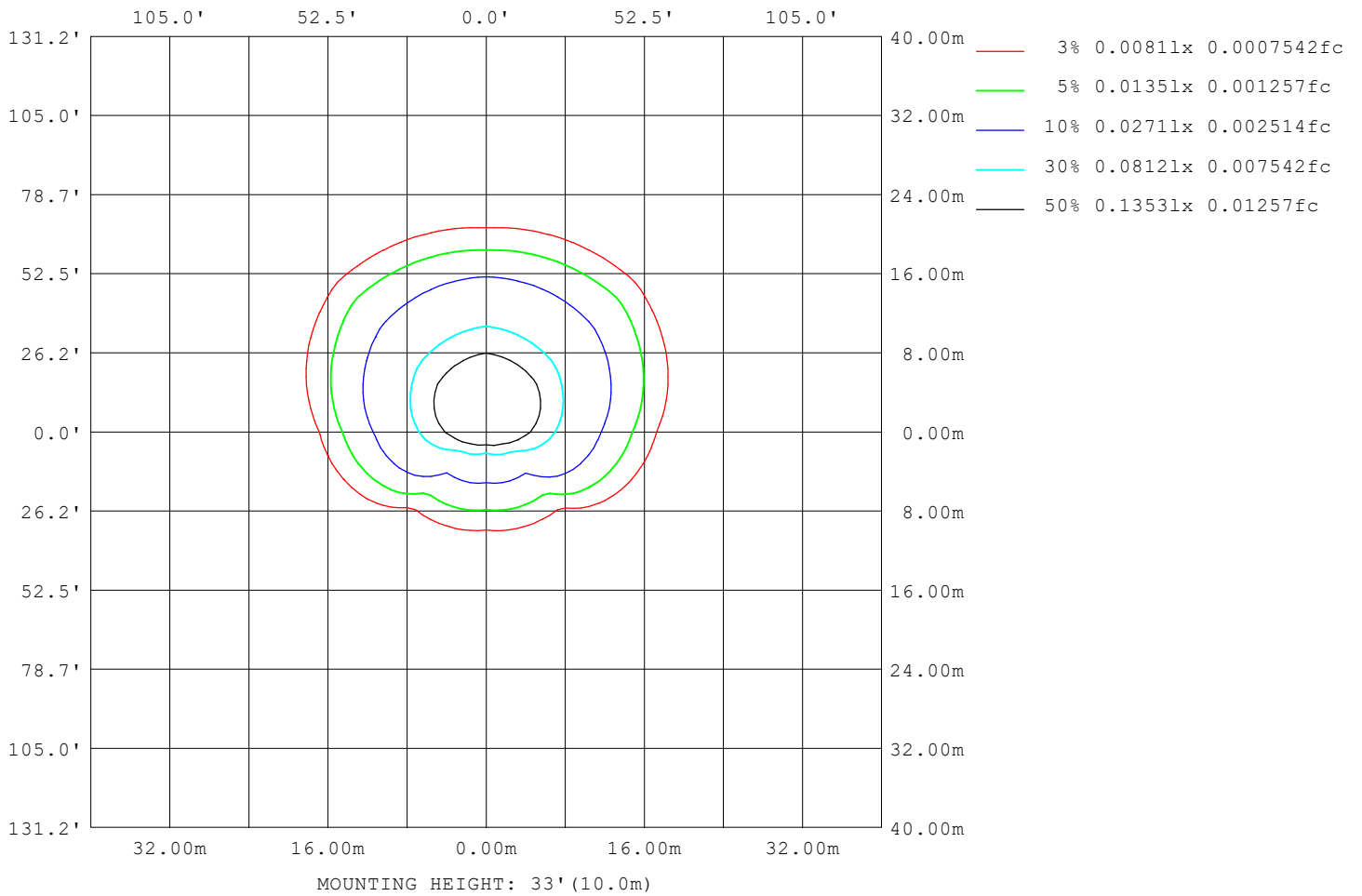
Note: The Curves indicate the illuminated area and the average illumination when the luminaire is at different distance.

C Range: 0 - 360DEG
 C Interval: 45.0DEG
 Test Speed: HIGH
 Temperature: 25.3°C
 Operators: Chen Songyu
 Test Date: 2025-12-09

γ Range: 0 - 90DEG
 γ Interval: 1.0DEG
 Test System: EVERFINE GO-2000H_V1 SYSTEM V2.00.456
 Humidity: 65.0%
 Test Distance: 9.520m [K=1.0000]
 Remarks:

ISOLUX DIAGRAM

Test:U:230.37V I:0.0162A P:3.1314W PF:0.8394 Freq:49.99Hz UTHDi:0.00% ITHDi:0.00% KDisp:0 Lamp Flux:49.579x1 lm		
Name: DL195-2.5-3W-P3	Type: 3W	Weight:
SPEC.: 4000K	DIM.:	Instrument No.: HUP-IES-B3
MFR.: EVERFINE	SUR.: 0.057*0.037	shielding angle:



C Range: 0 - 360DEG
 C Interval: 45.0DEG
 Test Speed: HIGH
 Temperature:25.3°C
 Operators:Chen Songyu
 Test Date:2025-12-09

γ Range: 0 - 90DEG
 γ Interval: 1.0DEG
 Test System:EVERFINE GO-2000H_V1 SYSTEM V2.00.456
 Humidity:65.0%
 Test Distance:9.520m [K=1.0000]
 Remarks:

LED Avg.L Report

Test:U:230.37V I:0.0162A P:3.1314W PF:0.8394 Freq:49.99Hz UTHDi:0.00% ITHDi:0.00% KDisp:0 Lamp Flux:49.579x1 lm		
Name: DL195-2.5-3W-P3	Type: 3W	Weight:
SPEC.: 4000K	DIM.:	Instrument No.: HUP-IES-B3
MFR.: EVERFINE	SUR.: 0.057*0.037	shielding angle:

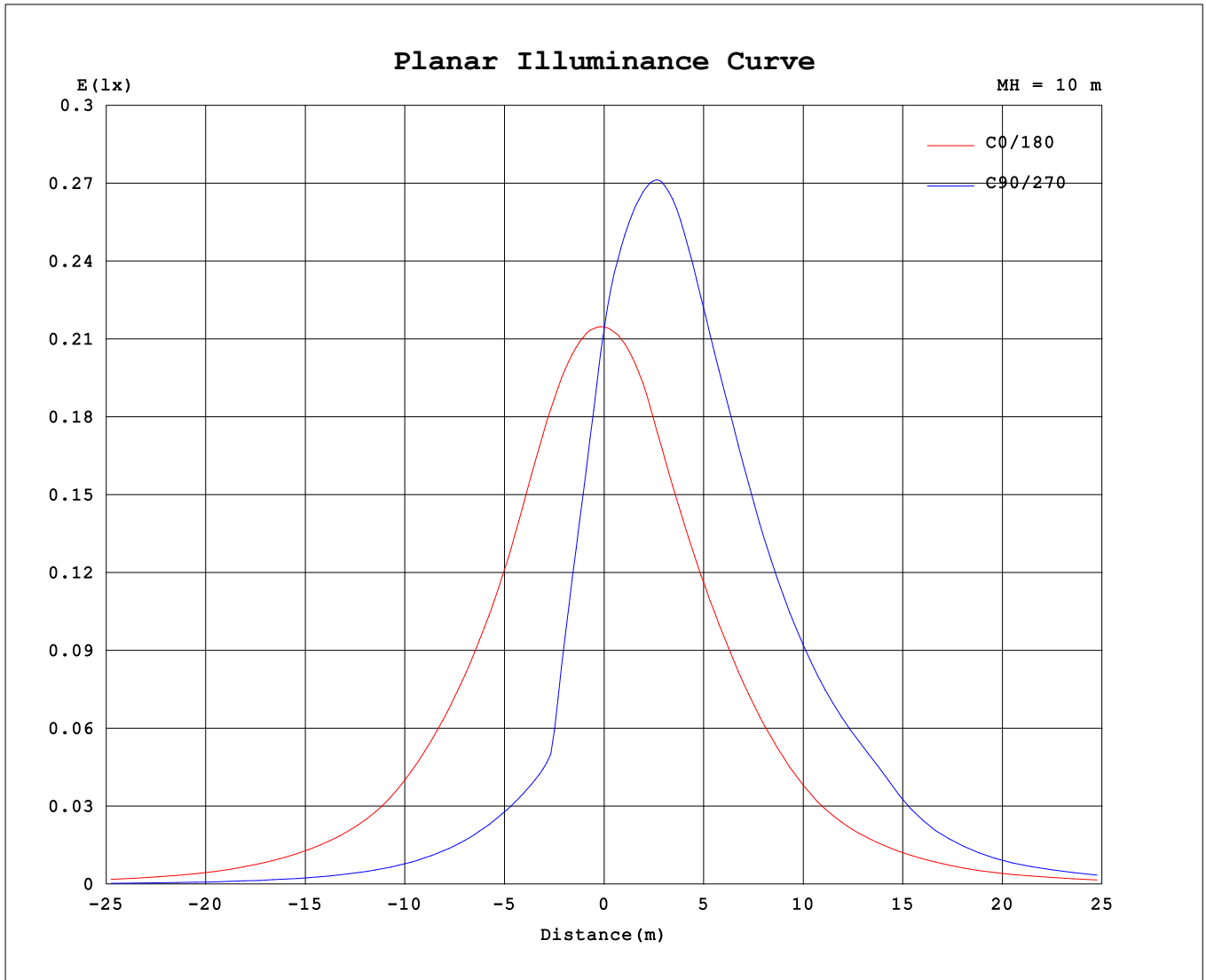
AvgL	cd/m2
L_0~180 (65) av	4963
L_0~180 (75) av	3277
L_0~180 (85) av	2444
L_90~270 (65) av	5647
L_90~270 (75) av	2703
L_90~270 (85) av	1088
L_45 (65) av	6570
L_45 (75) av	3563
L_45 (85) av	1398

Standard: GB/T 29293-2012

C Range: 0 - 360DEG
 C Interval: 45.0DEG
 Test Speed: HIGH
 Temperature:25.3℃
 Operators:Chen Songyu
 Test Date:2025-12-09

γ Range: 0 - 90DEG
 γ Interval: 1.0DEG
 Test System:EVERFINE GO-2000H_V1 SYSTEM V2.00.456
 Humidity:65.0%
 Test Distance:9.520m [K=1.0000]
 Remarks:

Planar Illuminance Curve



C Range: 0 - 360DEG
 C Interval: 45.0DEG
 Test Speed: HIGH
 Temperature: 25.3 °C
 Operators: Chen Songyu
 Test Date: 2025-12-09

γ Range: 0 - 90DEG
 γ Interval: 1.0DEG
 Test System: EVERFINE GO-2000H_V1 SYSTEM V2.00.456
 Humidity: 65.0%
 Test Distance: 9.520m [K=1.0000]
 Remarks:

