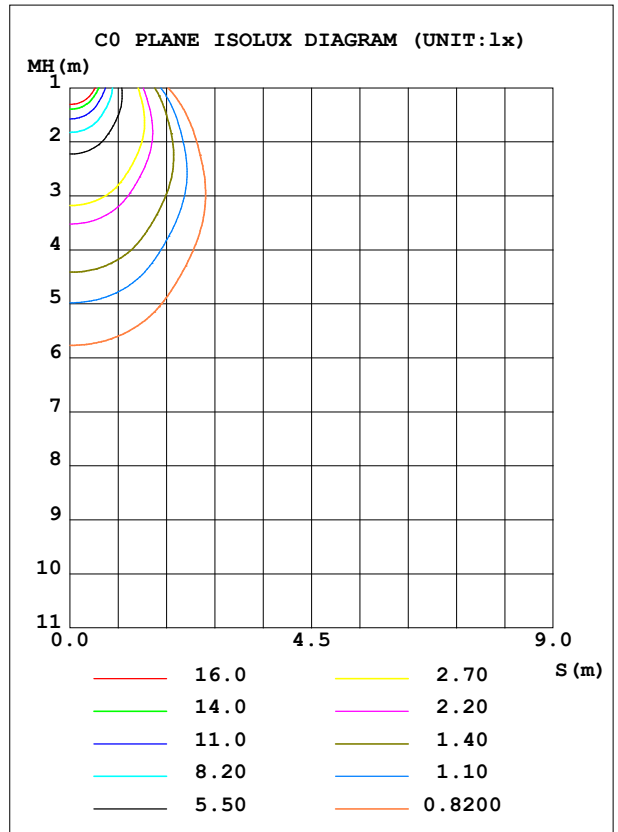
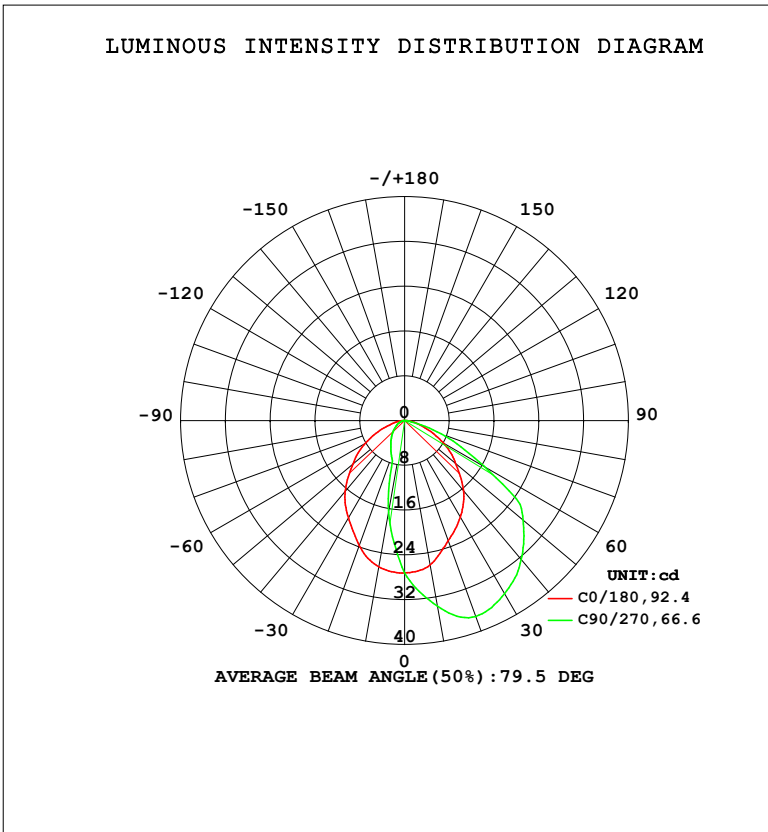


LUMINAIRE PHOTOMETRIC TEST REPORT

Test:U:230.36V I:0.0159A P:3.0404W PF:0.8313 Freq:49.99Hz UTHDi:0.00% ITHDi:0.00% KDisp:0 Lamp Flux:61.0545x1 lm		
Name: DL195-2.5-3W-P3	Type: 3W	Weight:
SPEC.: 4000K	DIM.:	Instrument No.: HUP-IES-B3
MFR.: EVERFINE	SUR.: 0.057*0.037	shielding angle:

DATA OF LAMP		PHOTOMETRIC DATA				Eff: 20.08 lm/W
MODEL	DL195-2.5-3W-P3	I <sub>max</sub> (cd)	37.23	S/MH (C0/180)	1.11	
NOMINAL POWER (W)	3	LOR (%)	100.0	S/MH (C90/270)	1.75	
RATED VOLTAGE (V)	230	TOTAL FLUX (lm)	61.054	η UP, DN (C0-180)	0.0, 24.4	
NOMINAL FLUX (lm)	61.0545	CIE CLASS	DIRECT	η UP, DN (C180-360)	0.0, 75.6	
LAMPS INSIDE	1	η up (%)	0.0	CIBSE SHR NOM	1.00	
TEST VOLTAGE (V)	230	η down (%)	100.0	CIBSE SHR MAX	1.10	



C Range: 0 - 360DEG  
 C Interval: 45.0DEG  
 Test Speed: HIGH  
 Temperature: 25.3 °C  
 Operators: Chen Songyu  
 Test Date: 2025-12-09

γ Range: 0 - 90DEG  
 γ Interval: 1.0DEG  
 Test System: EVERFINE GO-2000H\_V1 SYSTEM V2.00.456  
 Humidity: 65.0%  
 Test Distance: 9.520m [K=1.0000]  
 Remarks:

ZONAL FLUX DIAGRAM

ZONAL FLUX DIAGRAM:

$\gamma$	C0	C45	C90	C135	C180	C225	C270	C315	$\gamma$	$\Phi$ zone	$\Phi$ total	%lum, lamp
10	26.53	19.54	16.67	19.52	26.21	31.26	33.62	31.56	0- 10	2.507	2.507	4.11,4.11
20	23.73	10.56	6.855	10.51	22.86	32.18	37.23	33.79	10- 20	6.748	9.255	15.2,15.2
30	20.10	6.046	5.005	6.039	19.93	30.10	35.70	31.46	20- 30	9.501	18.76	30.7,30.7
40	16.56	4.471	3.613	4.470	16.41	26.84	32.43	27.37	30- 40	11.24	29.99	49.1,49.1
50	12.08	3.188	2.496	3.185	11.93	22.24	27.63	22.84	40- 50	11.50	41.49	68,68
60	8.113	2.100	1.587	2.102	7.990	16.15	16.43	16.61	50- 60	10.01	51.50	84.4,84.4
70	3.970	1.207	0.8825	1.206	3.943	7.485	6.958	7.669	60- 70	6.454	57.95	94.9,94.9
80	1.470	0.5199	0.3600	0.5111	1.498	1.552	1.093	1.574	70- 80	2.578	60.53	99.1,99.1
90	0.0375	0.0376	0.0493	0.0491	0.0404	0.0289	0.0260	0.0289	80- 90	0.5224	61.05	100,100
100									90-100			
110									100-110			
120									110-120			
130									120-130			
140									130-140			
150									140-150			
160									150-160			
170									160-170			
180									170-180			
DEG	LUMINOUS INTENSITY:cd									UNIT:lm		

Conical surface Flux(90deg): 35.813 lm

%lum = 58.7%

%lamp = 58.7%

Conical surface Flux(120deg): 51.5 lm

%lum = 84.4%

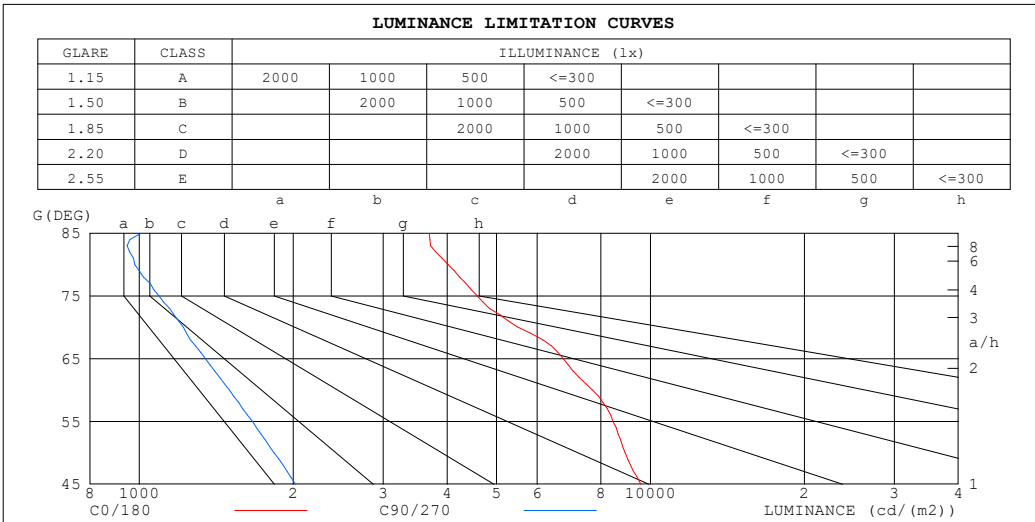
%lamp = 84.4%

C Range: 0 - 360DEG  
 C Interval: 45.0DEG  
 Test Speed: HIGH  
 Temperature:25.3°C  
 Operators:Chen Songyu  
 Test Date:2025-12-09

$\gamma$  Range: 0 - 90DEG  
 $\gamma$  Interval: 1.0DEG  
 Test System:EVERFINE GO-2000H\_V1 SYSTEM V2.00.456  
 Humidity:65.0%  
 Test Distance:9.520m [K=1.0000]  
 Remarks:

**LUMINANCE LIMITATION CURVES**

<b>Test:U:230.36V I:0.0159A P:3.0404W PF:0.8313 Freq:49.99Hz</b> <b>UTHDi:0.00% ITHDi:0.00% KDisp:0 Lamp Flux:61.0545x1 lm</b>		
<b>Name: DL195-2.5-3W-P3</b>	<b>Type: 3W</b>	<b>Weight:</b>
<b>SPEC.: 4000K</b>	<b>DIM.:</b>	<b>Instrument No.: HUP-IES-B3</b>
<b>MFR.: EVERFINE</b>	<b>SUR.: 0.057*0.037</b>	<b>shielding angle:</b>



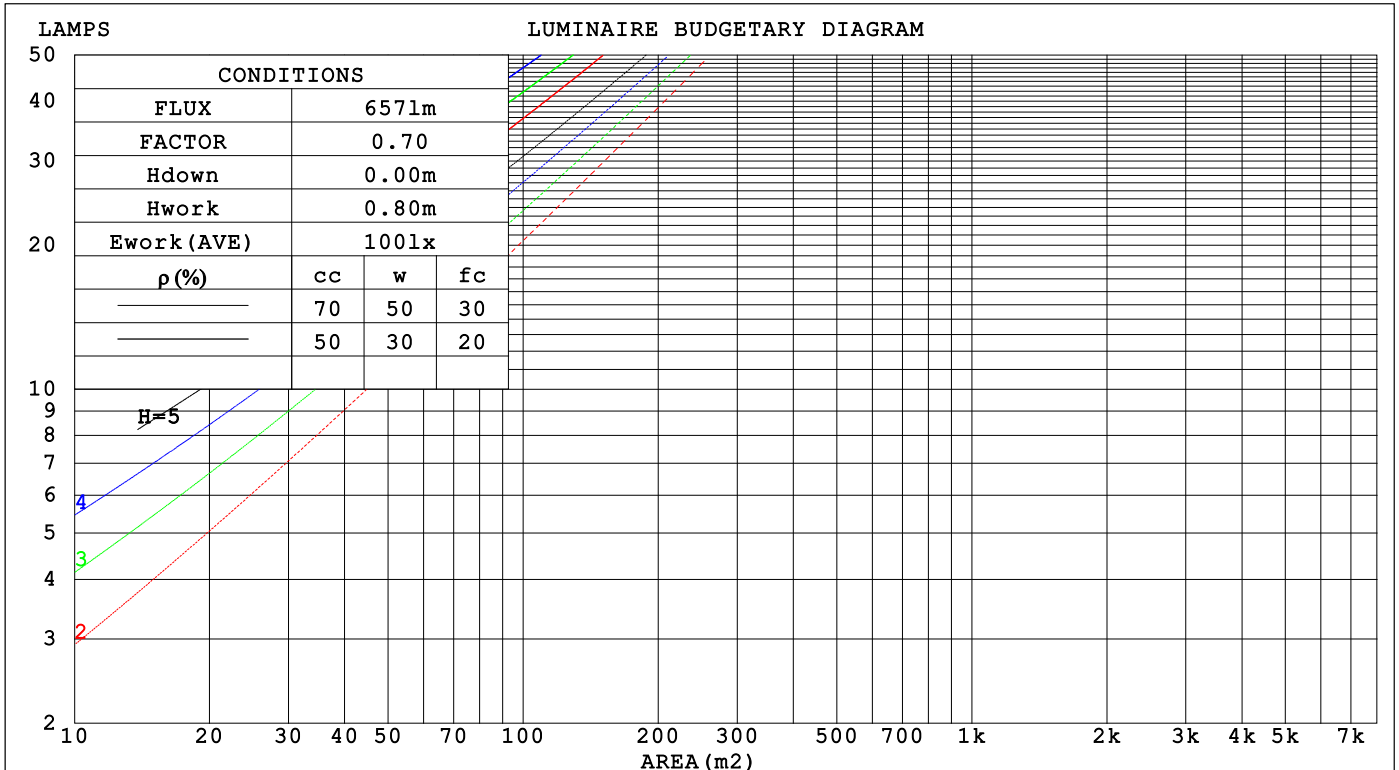
C Range: 0 - 360DEG  
 C Interval: 45.0DEG  
 Test Speed: HIGH  
 Temperature: 25.3 °C  
 Operators: Chen Songyu  
 Test Date: 2025-12-09

γ Range: 0 - 90DEG  
 γ Interval: 1.0DEG  
 Test System: EVERFINE GO-2000H\_V1 SYSTEM V2.00.456  
 Humidity: 65.0%  
 Test Distance: 9.520m [K=1.0000]  
 Remarks:

**CU AND LUMINAIRE BUDGETARY ESTIMATE DIAGRAM**

Test:U:230.36V I:0.0159A P:3.0404W PF:0.8313 Freq:49.99Hz		
UTHdi:0.00% ITHdi:0.00% KDisp:0 Lamp Flux:61.0545x1 lm		
Name: DL195-2.5-3W-P3	Type: 3W	Weight:
SPEC.: 4000K	DIM.:	Instrument No.: HUP-IES-B3
MFR.: EVERFINE	SUR.: 0.057*0.037	shielding angle:

pcc	80%			70%			50%			30%			10%			0
pw	50%	30%	10%	50%	30%	10%	50%	30%	10%	50%	30%	10%	50%	30%	10%	0
pfc	20%			20%			20%			20%			20%			0
RCR	RCR:Room Cavity Ratio															
	Coefficients of Utilization(CU)															
0.0	1.19	1.19	1.19	1.16	1.16	1.16	1.11	1.11	1.11	1.06	1.06	1.06	1.02	1.02	1.02	1.00
1.0	1.05	1.02	.98	1.03	.00	.97	.99	.96	.93	.95	.93	.91	.92	.90	.88	.86
2.0	.93	.87	.81	.91	.85	.80	.87	.83	.78	.84	.80	.77	.81	.78	.75	.73
3.0	.82	.74	.68	.81	.73	.68	.78	.72	.66	.75	.70	.65	.72	.68	.64	.62
4.0	.73	.65	.58	.72	.64	.58	.69	.63	.57	.67	.61	.56	.65	.60	.56	.54
5.0	.66	.57	.51	.64	.56	.50	.62	.55	.50	.60	.54	.49	.59	.53	.49	.47
6.0	.59	.51	.44	.58	.50	.44	.56	.49	.44	.55	.48	.43	.53	.48	.43	.41
7.0	.54	.45	.39	.53	.45	.39	.52	.44	.39	.50	.44	.39	.49	.43	.38	.36
8.0	.49	.41	.35	.49	.41	.35	.47	.40	.35	.46	.39	.35	.45	.39	.35	.33
9.0	.45	.37	.32	.45	.37	.32	.44	.37	.32	.42	.36	.31	.41	.36	.31	.30
10.0	.42	.34	.29	.41	.34	.29	.40	.34	.29	.39	.33	.29	.39	.33	.29	.27



C Range: 0 - 360DEG  
 C Interval: 45.0DEG  
 Test Speed: HIGH  
 Temperature:25.3°C  
 Operators:Chen Songyu  
 Test Date:2025-12-09

γ Range: 0 - 90DEG  
 γ Interval: 1.0DEG  
 Test System:EVERFINE GO-2000H\_V1 SYSTEM V2.00.456  
 Humidity:65.0%  
 Test Distance:9.520m [K=1.0000]  
 Remarks:

**WEC AND CCEC**

Test:U:230.36V I:0.0159A P:3.0404W PF:0.8313 Freq:49.99Hz		
UTHDi:0.00% ITHDi:0.00% KDisp:0 Lamp Flux:61.0545x1 lm		
Name: DL195-2.5-3W-P3	Type: 3W	Weight:
SPEC.: 4000K	DIM.:	Instrument No.: HUP-IES-B3
MFR.: EVERFINE	SUR.: 0.057*0.037	shielding angle:

$\rho_{CC}$	80%			70%			50%			30%			10%			0
$\rho_w$	50%	30%	10%	50%	30%	10%	50%	30%	10%	50%	30%	10%	50%	30%	10%	0
$\rho_{fc}$	20%			20%			20%			20%			20%			0
RCR	RCR:Room Cavity Ratio						Wall Exitance Coefficients(WEC)									
0.0																
1.0	.279	.159	.050	.272	.155	.049	.259	.149	.047	.247	.142	.046	.236	.137	.044	
2.0	.269	.147	.045	.263	.145	.045	.251	.140	.043	.240	.135	.042	.231	.130	.041	
3.0	.252	.134	.040	.247	.132	.040	.237	.128	.039	.227	.125	.038	.219	.121	.037	
4.0	.235	.122	.036	.231	.121	.036	.222	.118	.035	.213	.115	.035	.206	.112	.034	
5.0	.219	.112	.032	.215	.110	.032	.207	.108	.032	.200	.105	.031	.193	.103	.031	
6.0	.205	.103	.029	.201	.102	.029	.194	.099	.029	.187	.097	.029	.181	.095	.028	
7.0	.192	.095	.027	.188	.094	.027	.182	.092	.026	.176	.090	.026	.170	.088	.026	
8.0	.180	.088	.025	.177	.087	.025	.171	.085	.024	.166	.084	.024	.161	.082	.024	
9.0	.169	.082	.023	.166	.081	.023	.161	.080	.023	.156	.078	.022	.152	.077	.022	
10.0	.159	.076	.021	.157	.076	.021	.152	.075	.021	.148	.073	.021	.144	.072	.021	

$\rho_{CC}$	80%			70%			50%			30%			10%			0
$\rho_w$	50%	30%	10%	50%	30%	10%	50%	30%	10%	50%	30%	10%	50%	30%	10%	0
$\rho_{fc}$	20%			20%			20%			20%			20%			0
RCR	RCR:Room Cavity Ratio						Ceiling Cavity Exitance Coefficients(CCEC)									
0.0	.190	.190	.190	.163	.163	.163	.111	.111	.111	.064	.064	.064	.020	.020	.020	
1.0	.178	.156	.137	.152	.134	.118	.104	.092	.081	.060	.053	.047	.019	.017	.015	
2.0	.169	.132	.101	.145	.114	.087	.099	.079	.061	.057	.046	.036	.018	.015	.012	
3.0	.161	.114	.077	.138	.098	.067	.095	.068	.047	.055	.040	.028	.018	.013	.009	
4.0	.153	.101	.060	.132	.087	.052	.091	.061	.037	.052	.036	.022	.017	.012	.007	
5.0	.146	.090	.049	.126	.078	.042	.086	.054	.030	.050	.032	.018	.016	.010	.006	
6.0	.139	.082	.040	.120	.071	.035	.083	.050	.025	.048	.029	.015	.015	.010	.005	
7.0	.133	.075	.034	.114	.065	.030	.079	.045	.021	.046	.027	.013	.015	.009	.004	
8.0	.126	.069	.029	.109	.060	.026	.075	.042	.018	.044	.025	.011	.014	.008	.004	
9.0	.121	.064	.026	.104	.056	.023	.072	.039	.016	.042	.023	.010	.014	.008	.003	
10.0	.115	.060	.023	.099	.052	.020	.069	.036	.014	.040	.022	.008	.013	.007	.003	

C Range: 0 - 360DEG  
 C Interval: 45.0DEG  
 Test Speed: HIGH  
 Temperature:25.3°C  
 Operators:Chen Songyu  
 Test Date:2025-12-09

$\gamma$  Range: 0 - 90DEG  
 $\gamma$  Interval: 1.0DEG  
 Test System:EVERFINE GO-2000H\_V1 SYSTEM V2.00.456  
 Humidity:65.0%  
 Test Distance:9.520m [K=1.0000]  
 Remarks:

**UGR(Unified Glare Rating) Table**

Test:U:230.36V I:0.0159A P:3.0404W PF:0.8313 Freq:49.99Hz UTHDi:0.00% ITHDi:0.00% KDisp:0 Lamp Flux:61.0545x1 lm		
Name: DL195-2.5-3W-P3	Type: 3W	Weight:
SPEC.: 4000K	DIM.:	Instrument No.: HUP-IES-B3
MFR.: EVERFINE	SUR.: 0.057*0.037	shielding angle:

ceiling/cavity	0.7	0.7	0.5	0.5	0.3	0.7	0.7	0.5	0.5	0.3
walls	0.5	0.3	0.5	0.3	0.3	0.5	0.3	0.5	0.3	0.3
working plane	0.2	0.2	0.2	0.2	0.2	0.2	0.2	0.2	0.2	0.2

Room dimensions	Viewed crosswise					Viewed endwise				
x = 2H y = 2H	17.6	19.1	17.9	19.3	19.5	9.8	11.2	10.0	11.4	11.6
3H	18.9	20.3	19.2	20.5	20.7	10.7	12.1	11.0	12.3	12.5
4H	19.4	20.6	19.7	20.9	21.1	11.1	12.4	11.4	12.6	12.9
6H	19.7	20.9	20.0	21.2	21.4	11.4	12.6	11.7	12.8	13.1
8H	19.8	21.0	20.1	21.2	21.5	11.5	12.6	11.8	12.9	13.2
12H	19.9	21.0	20.2	21.3	21.6	11.5	12.6	11.9	12.9	13.2
4H 2H	17.5	18.7	17.8	19.0	19.2	11.0	12.2	11.3	12.5	12.7
3H	19.0	20.1	19.3	20.4	20.7	12.0	13.1	12.3	13.4	13.7
4H	19.5	20.5	19.9	20.8	21.2	12.4	13.4	12.8	13.7	14.1
6H	20.0	20.9	20.4	21.2	21.6	12.8	13.7	13.2	14.0	14.4
8H	20.2	21.0	20.6	21.3	21.7	12.9	13.7	13.3	14.1	14.5
12H	20.3	21.1	20.7	21.4	21.8	13.0	13.7	13.4	14.1	14.5
8H 4H	19.5	20.3	19.9	20.6	21.0	12.9	13.8	13.4	14.1	14.5
6H	20.0	20.7	20.5	21.1	21.5	13.4	14.1	13.9	14.5	14.9
8H	20.3	20.9	20.7	21.3	21.7	13.6	14.2	14.1	14.6	15.1
12H	20.5	21.0	20.9	21.4	21.9	13.8	14.3	14.2	14.7	15.2
12H 4H	19.4	20.2	19.8	20.6	21.0	13.0	13.8	13.5	14.2	14.6
6H	20.0	20.6	20.4	21.0	21.5	13.6	14.2	14.0	14.6	15.0
8H	20.2	20.8	20.7	21.2	21.7	13.8	14.3	14.3	14.7	15.2

Variations with the observer position at spacings(CIE Pub.117):		
S = 1.0H	+ 0.4 / - 0.2	+ 0.4 / - 0.5
1.5H	+ 1.0 / - 1.0	+ 0.1 / - 0.4
2.0H	+ 1.8 / - 2.2	+ 0.4 / - 0.7

CIE Pub.117, 61.05 lm Total Lamp Luminous Flux Corrected (8log(F/F0) = -9.7)  
 Area: 0.002109 m2

C Range: 0 - 360DEG	γ Range: 0 - 90DEG
C Interval: 45.0DEG	γ Interval: 1.0DEG
Test Speed: HIGH	Test System:EVERFINE GO-2000H_V1 SYSTEM V2.00.456
Temperature:25.3℃	Humidity:65.0%
Operators:Chen Songyu	Test Distance:9.520m [K=1.0000]
Test Date:2025-12-09	Remarks:

**UTILIZATION FACTORS TABLE**

Test:U:230.36V I:0.0159A P:3.0404W PF:0.8313 Freq:49.99Hz UTHDi:0.00% ITHDi:0.00% KDisp:0 Lamp Flux:61.0545x1 lm		
Name: DL195-2.5-3W-P3	Type: 3W	Weight:
SPEC.: 4000K	DIM.:	Instrument No.: HUP-IES-B3
MFR.: EVERFINE	SUR.: 0.057*0.037	shielding angle:

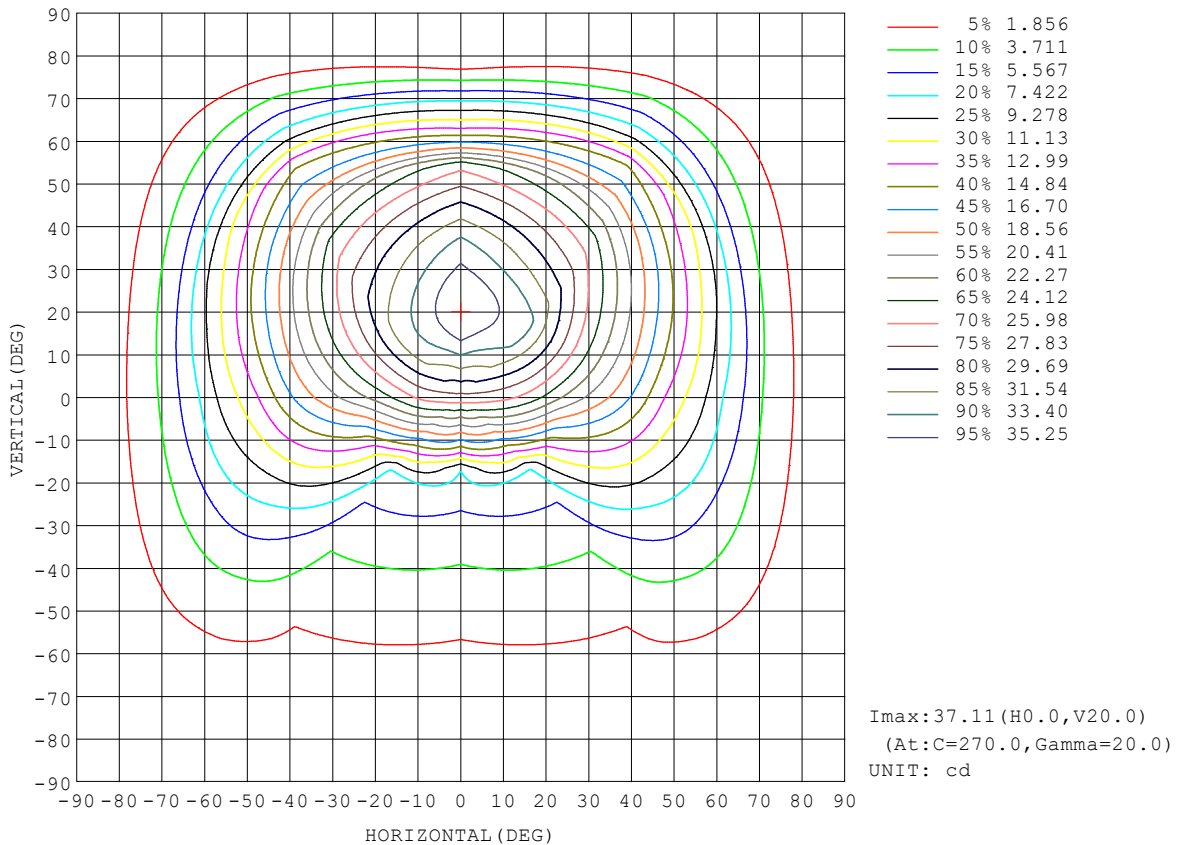
REFLECTANCE										
Ceiling	0.8	0.8	0.8	0.7	0.7	0.7	0.5	0.5	0.5	0
Walls	0.7	0.5	0.3	0.7	0.5	0.3	0.7	0.5	0.3	0
Working plane	0.2	0.2	0.2	0.2	0.2	0.2	0.2	0.2	0.2	0
ROOM INDEX	UTILIZATION FACTORS (PERCENT) $k(RI) \times RCR = 5$									
k = 0.60	60	49	42	59	48	42	58	48	42	35
0.80	70	59	52	69	59	52	67	58	51	45
1.00	79	68	61	78	68	61	75	69	61	54
1.25	86	76	69	84	75	69	82	74	68	61
1.50	91	81	75	89	81	75	86	79	73	66
2.00	97	89	83	95	88	83	92	86	81	74
2.50	101	94	88	99	92	87	95	90	85	78
3.00	104	98	93	102	96	92	98	93	89	81
4.00	108	102	98	105	101	97	101	97	94	86
5.00	110	105	102	107	104	100	103	100	97	88
ROOM INDEX	UF(total)									Direct
According to DIN EN 13032-2 2004			Suspended				SHRNOM = 1.25			

C Range: 0 - 360DEG  
 C Interval: 45.0DEG  
 Test Speed: HIGH  
 Temperature:25.3°C  
 Operators:Chen Songyu  
 Test Date:2025-12-09

γ Range: 0 - 90DEG  
 γ Interval: 1.0DEG  
 Test System:EVERFINE GO-2000H\_V1 SYSTEM V2.00.456  
 Humidity:65.0%  
 Test Distance:9.520m [K=1.0000]  
 Remarks:

**ISOCANDELA DIAGRAM**

Test:U:230.36V I:0.0159A P:3.0404W PF:0.8313 Freq:49.99Hz UTHDi:0.00% ITHDi:0.00% KDisp:0 Lamp Flux:61.0545x1 lm		
Name: DL195-2.5-3W-P3	Type: 3W	Weight:
SPEC.: 4000K	DIM.:	Instrument No.: HUP-IES-B3
MFR.: EVERFINE	SUR.: 0.057*0.037	shielding angle:

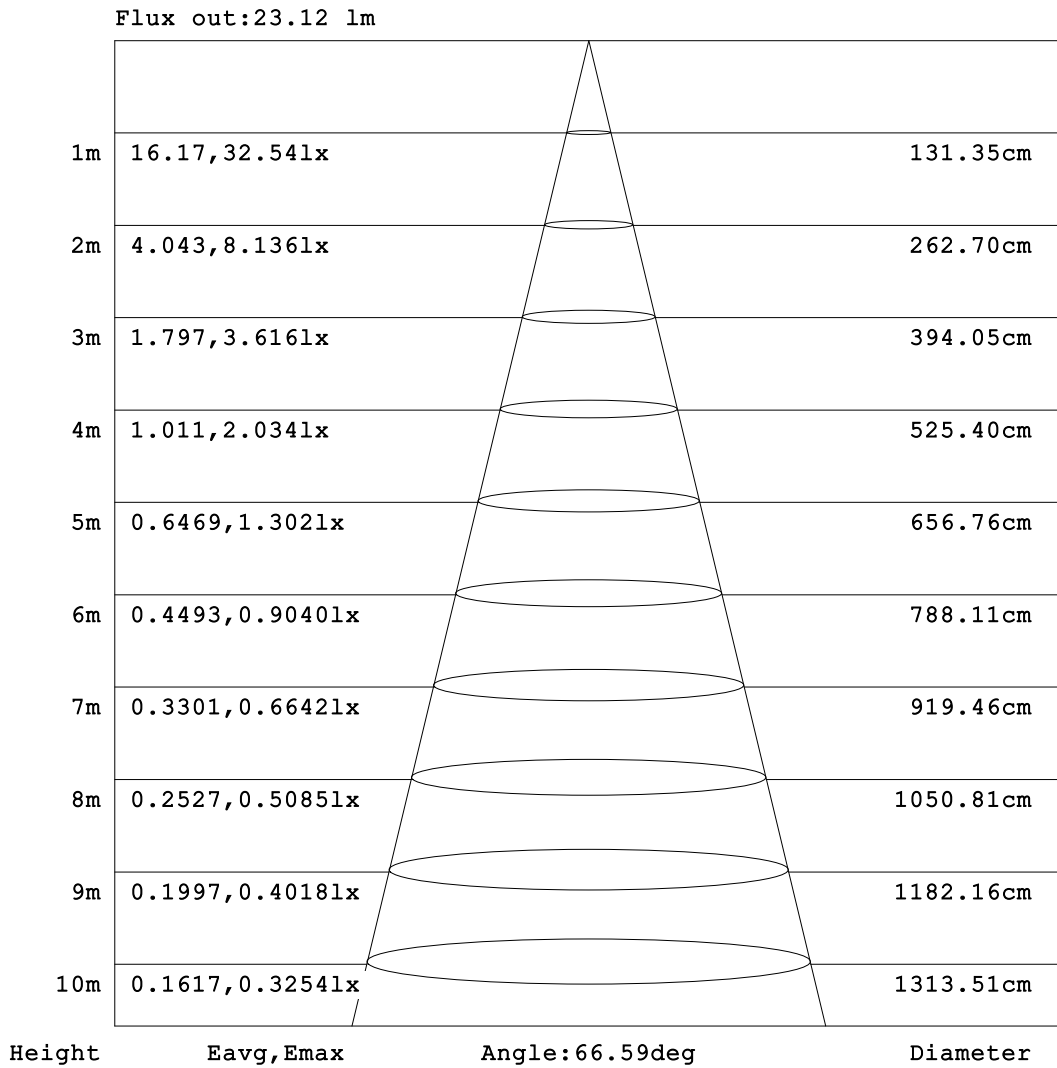


C Range: 0 - 360DEG  
 C Interval: 45.0DEG  
 Test Speed: HIGH  
 Temperature:25.3℃  
 Operators:Chen Songyu  
 Test Date:2025-12-09

γ Range: 0 - 90DEG  
 γ Interval: 1.0DEG  
 Test System:EVERFINE GO-2000H\_V1 SYSTEM V2.00.456  
 Humidity:65.0%  
 Test Distance:9.520m [K=1.0000]  
 Remarks:

**AAI Figure**

Test:U:230.36V I:0.0159A P:3.0404W PF:0.8313 Freq:49.99Hz		
UTHDi:0.00% ITHDi:0.00% KDisp:0 Lamp Flux:61.0545x1 lm		
Name: DL195-2.5-3W-P3	Type: 3W	Weight:
SPEC.: 4000K	DIM.:	Instrument No.: HUP-IES-B3
MFR.: EVERFINE	SUR.: 0.057*0.037	shielding angle:



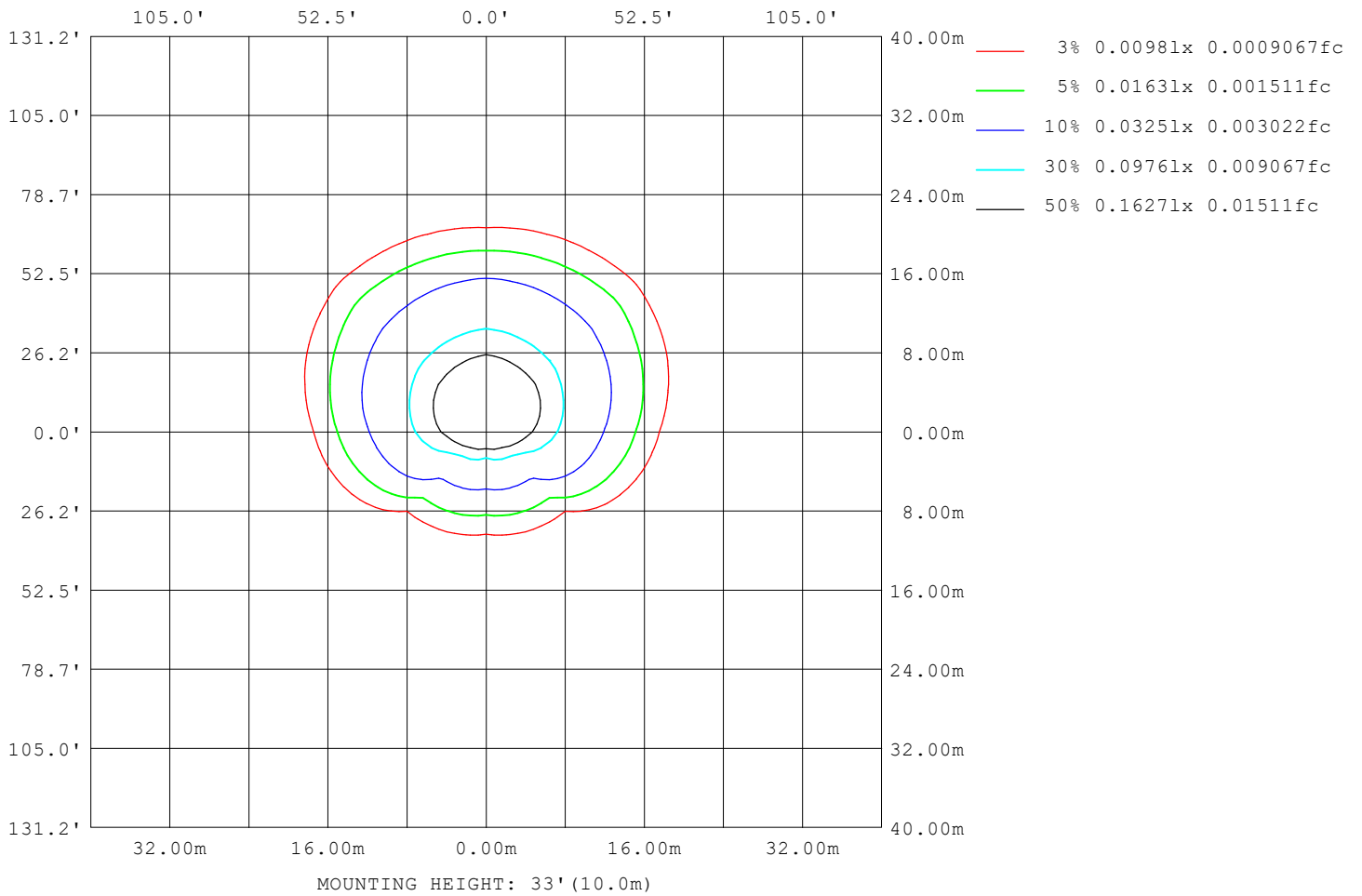
Note:The Curves indicate the illuminated area and the average illumination when the luminaire is at different distance.

C Range: 0 - 360DEG  
 C Interval: 45.0DEG  
 Test Speed: HIGH  
 Temperature:25.3°C  
 Operators:Chen Songyu  
 Test Date:2025-12-09

γ Range: 0 - 90DEG  
 γ Interval: 1.0DEG  
 Test System:EVERFINE GO-2000H\_V1 SYSTEM V2.00.456  
 Humidity:65.0%  
 Test Distance:9.520m [K=1.0000]  
 Remarks:

**ISOLUX DIAGRAM**

Test:U:230.36V I:0.0159A P:3.0404W PF:0.8313 Freq:49.99Hz UTHDi:0.00% ITHDi:0.00% KDisp:0 Lamp Flux:61.0545x1 lm		
Name: DL195-2.5-3W-P3	Type: 3W	Weight:
SPEC.: 4000K	DIM.:	Instrument No.: HUP-IES-B3
MFR.: EVERFINE	SUR.: 0.057*0.037	shielding angle:



C Range: 0 - 360DEG  
 C Interval: 45.0DEG  
 Test Speed: HIGH  
 Temperature:25.3°C  
 Operators:Chen Songyu  
 Test Date:2025-12-09

γ Range: 0 - 90DEG  
 γ Interval: 1.0DEG  
 Test System:EVERFINE GO-2000H\_V1 SYSTEM V2.00.456  
 Humidity:65.0%  
 Test Distance:9.520m [K=1.0000]  
 Remarks:

**LED Avg.L Report**

Test:U:230.36V I:0.0159A P:3.0404W PF:0.8313 Freq:49.99Hz UTHDi:0.00% ITHDi:0.00% KDisp:0 Lamp Flux:61.0545x1 lm		
Name: DL195-2.5-3W-P3	Type: 3W	Weight:
SPEC.: 4000K	DIM.:	Instrument No.: HUP-IES-B3
MFR.: EVERFINE	SUR.: 0.057*0.037	shielding angle:

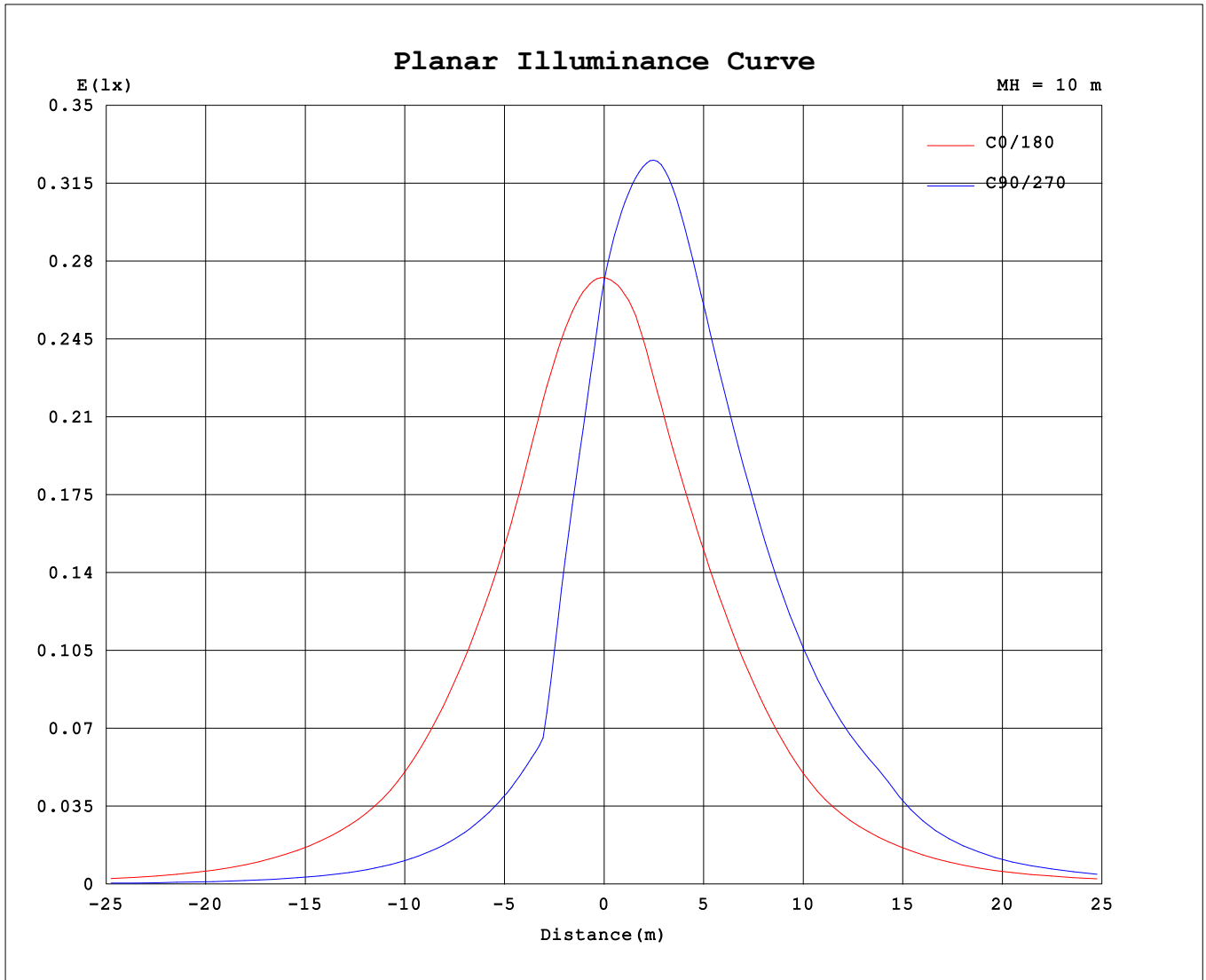
AvgL	cd/m2
L_0~180 (65) av	6677
L_0~180 (75) av	4645
L_0~180 (85) av	3679
L_90~270 (65) av	6906
L_90~270 (75) av	3432
L_90~270 (85) av	1814
L_45 (65) av	7865
L_45 (75) av	4649
L_45 (85) av	2261

Standard: GB/T 29293-2012

C Range: 0 - 360DEG  
 C Interval: 45.0DEG  
 Test Speed: HIGH  
 Temperature:25.3℃  
 Operators:Chen Songyu  
 Test Date:2025-12-09

γ Range: 0 - 90DEG  
 γ Interval: 1.0DEG  
 Test System:EVERFINE GO-2000H\_V1 SYSTEM V2.00.456  
 Humidity:65.0%  
 Test Distance:9.520m [K=1.0000]  
 Remarks:

**Planar Illuminance Curve**



C Range: 0 - 360DEG  
 C Interval: 45.0DEG  
 Test Speed: HIGH  
 Temperature: 25.3 °C  
 Operators: Chen Songyu  
 Test Date: 2025-12-09

γ Range: 0 - 90DEG  
 γ Interval: 1.0DEG  
 Test System: EVERFINE GO-2000H\_V1 SYSTEM V2.00.456  
 Humidity: 65.0%  
 Test Distance: 9.520m [K=1.0000]  
 Remarks:

