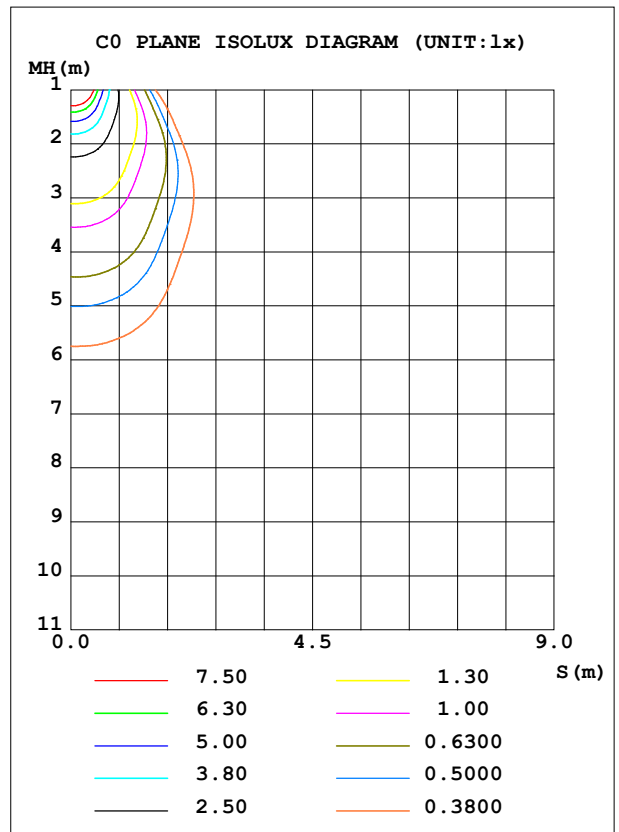
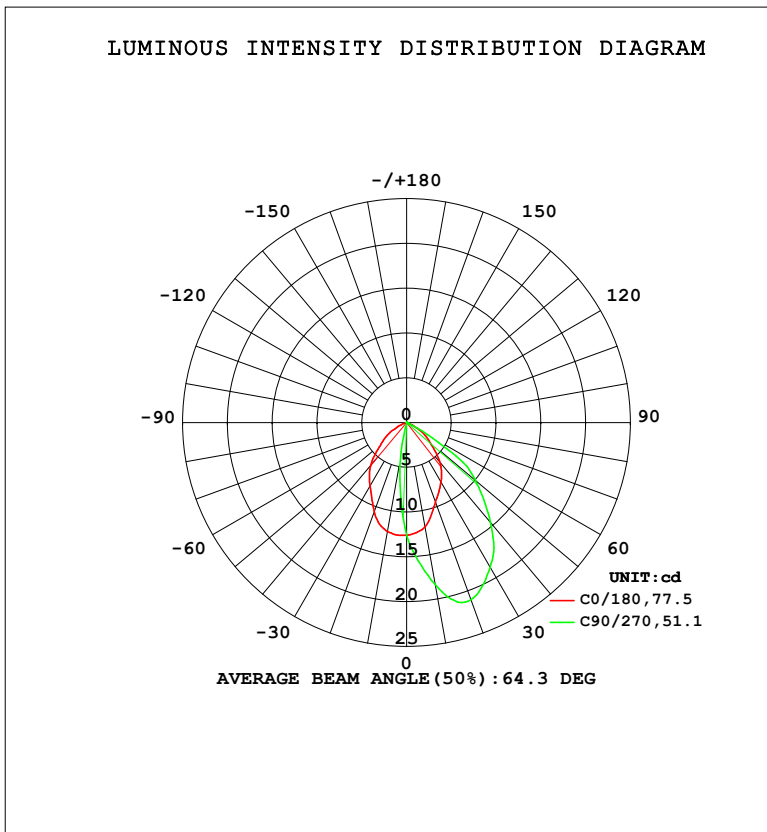


LUMINAIRE PHOTOMETRIC TEST REPORT

Test:U:230.46V I:0.0159A P:3.0422W PF:0.8318 Freq:49.99Hz		
UTHDi:0.00% ITHDi:0.00% KDisp:0 Lamp Flux:21.0576x1 lm		
Name: DL195-2.5-3W-P3	Type: 3W	Weight:
SPEC.: 4000K	DIM.:	Instrument No.: HUP-IES-B3
MFR.: EVERFINE	SUR.: 0.057*0.037	shielding angle:

DATA OF LAMP		PHOTOMETRIC DATA				Eff: 6.92 lm/W
MODEL	DL195-2.5-3W-P3	I _{max} (cd)	21.10	S/MH (C0/180)	1.01	
NOMINAL POWER (W)	3	LOR (%)	100.0	S/MH (C90/270)	1.59	
RATED VOLTAGE (V)	230	TOTAL FLUX (lm)	21.058	η UP, DN (C0-180)	0.0,15.0	
NOMINAL FLUX (lm)	21.0576	CIE CLASS	DIRECT	η UP, DN (C180-360)	0.0,85.0	
LAMPS INSIDE	1	η up (%)	0.0	CIBSE SHR NOM	0.75	
TEST VOLTAGE (V)	230	η down (%)	100.0	CIBSE SHR MAX	0.85	



C Range: 0 - 360DEG
 C Interval: 45.0DEG
 Test Speed: HIGH
 Temperature: 25.3 °C
 Operators: Chen Songyu
 Test Date: 2025-12-09

γ Range: 0 - 90DEG
 γ Interval: 1.0DEG
 Test System: EVERFINE GO-2000H_V1 SYSTEM V2.00.456
 Humidity: 65.0%
 Test Distance: 9.520m [K=1.0000]
 Remarks:

ZONAL FLUX DIAGRAM

ZONAL FLUX DIAGRAM:

γ	C0	C45	C90	C135	C180	C225	C270	C315	γ	Φ zone	Φ total	%lum,lamp
10	12.35	6.310	4.073	6.119	11.83	16.15	18.34	16.53	0- 10	1.132	1.132	5.38,5.38
20	10.60	0.4232	0.0436	0.2076	9.465	17.38	21.05	18.97	10- 20	3.002	4.135	19.6,19.6
30	8.195	0.0173	0.0318	0.0173	7.710	15.19	18.67	16.69	20- 30	4.181	8.316	39.5,39.5
40	6.261	0.0173	0.0203	0.0173	5.815	12.38	14.59	12.82	30- 40	4.643	12.96	61.5,61.5
50	3.738	0.0173	0.0203	0.0173	3.392	8.692	10.03	8.975	40- 50	4.194	17.15	81.5,81.5
60	1.981	0.0173	0.0174	0.0173	1.670	4.516	2.724	4.749	50- 60	2.870	20.02	95.1,95.1
70	0.3058	0.0173	0.0174	0.0173	0.1619	0.3819	0.1942	0.3170	60- 70	0.9499	20.97	99.6,99.6
80	0.0290	0.0173	0.0174	0.0173	0.0203	0.0318	0.0145	0.0289	70- 80	0.0641	21.04	99.9,99.9
90	0.0174	0.0173	0.0174	0.0173	0.0203	0.0144	0.0145	0.0173	80- 90	0.0210	21.06	100,100
100									90-100			
110									100-110			
120									110-120			
130									120-130			
140									130-140			
150									140-150			
160									150-160			
170									160-170			
180									170-180			
DEG	LUMINOUS INTENSITY:cd									UNIT:lm		

Conical surface Flux(90deg): 15.175 lm

%lum = 72.1%

%lamp = 72.1%

Conical surface Flux(120deg): 20.023 lm

%lum = 95.1%

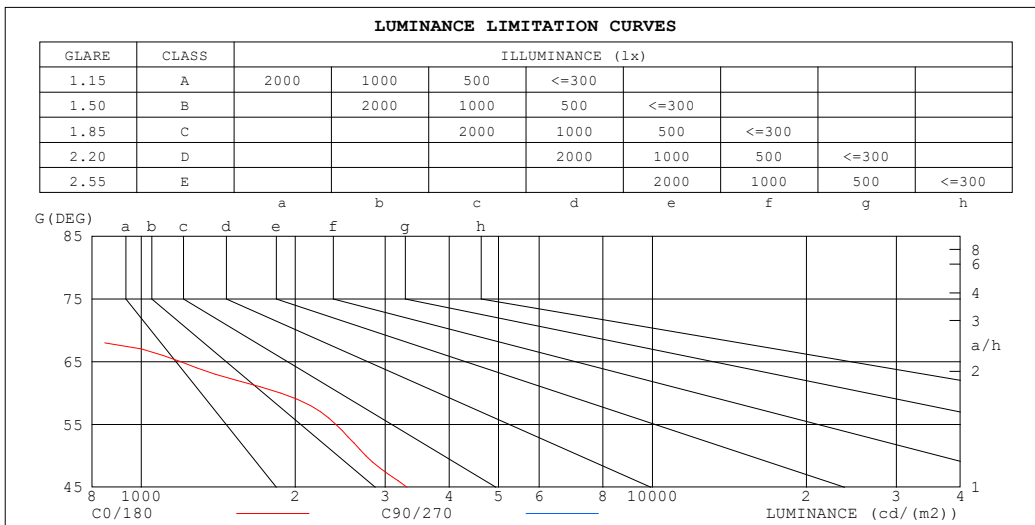
%lamp = 95.1%

C Range: 0 - 360DEG
 C Interval: 45.0DEG
 Test Speed: HIGH
 Temperature:25.3℃
 Operators:Chen Songyu
 Test Date:2025-12-09

γ Range: 0 - 90DEG
 γ Interval: 1.0DEG
 Test System:EVERFINE GO-2000H_V1 SYSTEM V2.00.456
 Humidity:65.0%
 Test Distance:9.520m [K=1.0000]
 Remarks:

LUMINANCE LIMITATION CURVES

Test:U:230.46V I:0.0159A P:3.0422W PF:0.8318 Freq:49.99Hz UTHDi:0.00% ITHDi:0.00% KDisp:0 Lamp Flux:21.0576x1 lm		
Name: DL195-2.5-3W-P3	Type: 3W	Weight:
SPEC.: 4000K	DIM.:	Instrument No.: HUP-IES-B3
MFR.: EVERFINE	SUR.: 0.057*0.037	shielding angle:



LUMINANCE cd/(m2)		
G (DEG)	C0/180	C90/270
85	110	94
80	79	47
75	74	32
70	423	24
65	1196	19
60	1873	16
55	2403	14
50	2750	15
45	3310	14

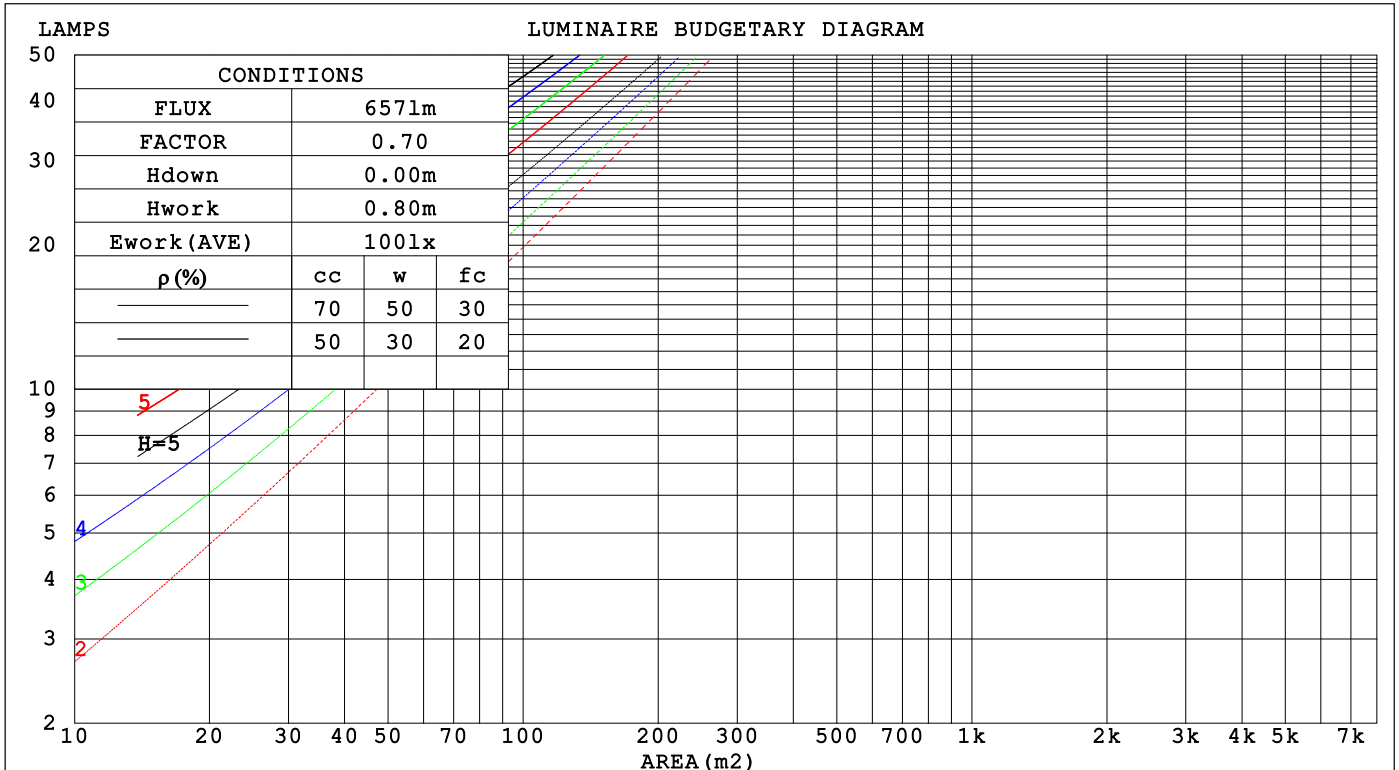
C Range: 0 - 360DEG
 C Interval: 45.0DEG
 Test Speed: HIGH
 Temperature: 25.3 °C
 Operators: Chen Songyu
 Test Date: 2025-12-09

γ Range: 0 - 90DEG
 γ Interval: 1.0DEG
 Test System: EVERFINE GO-2000H_V1 SYSTEM V2.00.456
 Humidity: 65.0%
 Test Distance: 9.520m [K=1.0000]
 Remarks:

CU AND LUMINAIRE BUDGETARY ESTIMATE DIAGRAM

Test:U:230.46V I:0.0159A P:3.0422W PF:0.8318 Freq:49.99Hz		
UTHDi:0.00% ITHDi:0.00% KDisp:0 Lamp Flux:21.0576x1 lm		
Name: DL195-2.5-3W-P3	Type: 3W	Weight:
SPEC.: 4000K	DIM.:	Instrument No.: HUP-IES-B3
MFR.: EVERFINE	SUR.: 0.057*0.037	shielding angle:

pcc	80%			70%			50%			30%			10%			0
	50%	30%	10%	50%	30%	10%	50%	30%	10%	50%	30%	10%	50%	30%	10%	0
pw	0															
pfc	0															
RCR	RCR:Room Cavity Ratio Coefficients of Utilization(CU)															
0.0	1.19	1.19	1.19	1.16	1.16	1.16	1.11	1.11	1.11	1.06	1.06	1.06	1.02	1.02	1.02	1.00
1.0	1.08	1.05	1.02	1.06	1.03	1.00	1.02	.99	.97	.98	.96	.94	.94	.93	.92	.90
2.0	.97	.92	.88	.96	.91	.86	.92	.88	.85	.89	.86	.83	.86	.83	.81	.79
3.0	.88	.81	.76	.86	.80	.75	.83	.78	.74	.81	.76	.73	.78	.75	.71	.70
4.0	.79	.72	.66	.78	.71	.66	.76	.70	.65	.73	.68	.64	.71	.67	.63	.62
5.0	.72	.64	.59	.71	.64	.58	.69	.62	.58	.67	.61	.57	.65	.60	.57	.55
6.0	.65	.58	.52	.65	.57	.52	.63	.56	.52	.61	.56	.51	.60	.55	.51	.49
7.0	.60	.52	.47	.59	.52	.47	.58	.51	.46	.56	.50	.46	.55	.50	.46	.44
8.0	.55	.48	.42	.55	.47	.42	.53	.47	.42	.52	.46	.42	.51	.46	.42	.40
9.0	.51	.44	.39	.50	.43	.38	.49	.43	.38	.48	.42	.38	.47	.42	.38	.36
10.0	.47	.40	.35	.47	.40	.35	.46	.40	.35	.45	.39	.35	.44	.39	.35	.33



C Range: 0 - 360DEG
 C Interval: 45.0DEG
 Test Speed: HIGH
 Temperature:25.3°C
 Operators:Chen Songyu
 Test Date:2025-12-09

γ Range: 0 - 90DEG
 γ Interval: 1.0DEG
 Test System:EVERFINE GO-2000H_V1 SYSTEM V2.00.456
 Humidity:65.0%
 Test Distance:9.520m [K=1.0000]
 Remarks:

WEC AND CCEC

Test:U:230.46V I:0.0159A P:3.0422W PF:0.8318 Freq:49.99Hz		
UTHDi:0.00% ITHDi:0.00% KDisp:0 Lamp Flux:21.0576x1 lm		
Name: DL195-2.5-3W-P3	Type: 3W	Weight:
SPEC.: 4000K	DIM.:	Instrument No.: HUP-IES-B3
MFR.: EVERFINE	SUR.: 0.057*0.037	shielding angle:

ρ_{CC}	80%			70%			50%			30%			10%			0
ρ_w	50%	30%	10%	50%	30%	10%	50%	30%	10%	50%	30%	10%	50%	30%	10%	0
ρ_{fc}	20%			20%			20%			20%			20%			0
RCR	RCR:Room Cavity Ratio						Wall Exitance Coefficients(WEC)									
0.0																
1.0	.229	.130	.041	.223	.127	.040	.210	.120	.038	.198	.114	.037	.187	.108	.035	
2.0	.226	.124	.038	.220	.121	.037	.209	.116	.036	.199	.111	.035	.189	.107	.034	
3.0	.217	.115	.035	.212	.113	.034	.202	.109	.033	.193	.106	.032	.185	.102	.032	
4.0	.206	.107	.031	.202	.106	.031	.193	.102	.031	.185	.099	.030	.178	.097	.029	
5.0	.195	.099	.029	.191	.098	.029	.184	.096	.028	.177	.093	.028	.170	.091	.027	
6.0	.185	.093	.026	.181	.091	.026	.174	.089	.026	.168	.087	.026	.162	.085	.025	
7.0	.175	.086	.024	.171	.085	.024	.165	.084	.024	.160	.082	.024	.154	.080	.024	
8.0	.165	.081	.023	.162	.080	.023	.157	.078	.022	.152	.077	.022	.147	.075	.022	
9.0	.156	.076	.021	.154	.075	.021	.149	.074	.021	.144	.072	.021	.140	.071	.021	
10.0	.149	.071	.020	.146	.071	.020	.142	.069	.020	.138	.068	.019	.134	.067	.019	

ρ_{CC}	80%			70%			50%			30%			10%			0
ρ_w	50%	30%	10%	50%	30%	10%	50%	30%	10%	50%	30%	10%	50%	30%	10%	0
ρ_{fc}	20%			20%			20%			20%			20%			0
RCR	RCR:Room Cavity Ratio						Ceiling Cavity Exitance Coefficients(CCEC)									
0.0	.190	.190	.190	.163	.163	.163	.111	.111	.111	.064	.064	.064	.020	.020	.020	
1.0	.175	.157	.141	.150	.135	.121	.102	.093	.084	.059	.054	.049	.019	.017	.016	
2.0	.163	.132	.106	.140	.114	.092	.096	.079	.064	.055	.046	.037	.018	.015	.012	
3.0	.154	.114	.082	.132	.098	.071	.091	.068	.050	.052	.040	.029	.017	.013	.010	
4.0	.146	.100	.065	.125	.086	.056	.086	.060	.040	.050	.035	.023	.016	.011	.008	
5.0	.139	.089	.052	.119	.077	.046	.082	.054	.032	.048	.032	.019	.015	.010	.006	
6.0	.132	.081	.043	.114	.070	.038	.079	.049	.027	.046	.029	.016	.015	.009	.005	
7.0	.126	.073	.037	.109	.064	.032	.075	.045	.023	.044	.026	.013	.014	.009	.004	
8.0	.120	.068	.031	.104	.059	.027	.072	.041	.019	.042	.024	.012	.014	.008	.004	
9.0	.115	.063	.027	.099	.054	.024	.069	.038	.017	.040	.023	.010	.013	.007	.003	
10.0	.110	.058	.024	.095	.051	.021	.066	.036	.015	.038	.021	.009	.012	.007	.003	

C Range: 0 - 360DEG
 C Interval: 45.0DEG
 Test Speed: HIGH
 Temperature:25.3℃
 Operators:Chen Songyu
 Test Date:2025-12-09

γ Range: 0 - 90DEG
 γ Interval: 1.0DEG
 Test System:EVERFINE GO-2000H_V1 SYSTEM V2.00.456
 Humidity:65.0%
 Test Distance:9.520m [K=1.0000]
 Remarks:

UGR(Unified Glare Rating) Table

Test:U:230.46V I:0.0159A P:3.0422W PF:0.8318 Freq:49.99Hz UTHDi:0.00% ITHDi:0.00% KDisp:0 Lamp Flux:21.0576x1 lm		
Name: DL195-2.5-3W-P3	Type: 3W	Weight:
SPEC.: 4000K	DIM.:	Instrument No.: HUP-IES-B3
MFR.: EVERFINE	SUR.: 0.057*0.037	shielding angle:

ceiling/cavity	0.7	0.7	0.5	0.5	0.3	0.7	0.7	0.5	0.5	0.3
walls	0.5	0.3	0.5	0.3	0.3	0.5	0.3	0.5	0.3	0.3
working plane	0.2	0.2	0.2	0.2	0.2	0.2	0.2	0.2	0.2	0.2

Room dimensions	Viewed crosswise					Viewed endwise				
x = 2H y = 2H	11.8	13.1	12.0	13.2	13.4	-10.1	-8.8	-9.8	-8.6	-8.4
3H	12.0	13.2	12.3	13.4	13.6	-9.9	-8.8	-9.7	-8.6	-8.3
4H	11.9	13.0	12.2	13.3	13.5	-9.7	-8.6	-9.4	-8.3	-8.1
6H	11.8	12.9	12.1	13.1	13.4	-9.2	-8.1	-8.9	-7.9	-7.6
8H	11.8	12.8	12.1	13.0	13.3	-8.8	-7.8	-8.4	-7.5	-7.2
12H	11.7	12.7	12.1	13.0	13.3	-8.1	-7.2	-7.8	-6.9	-6.6
4H 2H	11.5	12.6	11.8	12.8	13.1	-3.3	-2.2	-3.0	-1.9	-1.7
3H	11.8	12.7	12.1	13.0	13.3	-3.4	-2.4	-3.1	-2.2	-1.9
4H	11.7	12.5	12.0	12.8	13.2	-3.4	-2.5	-3.0	-2.2	-1.9
6H	11.6	12.3	12.0	12.7	13.0	-3.3	-2.6	-2.9	-2.2	-1.9
8H	11.5	12.2	11.9	12.6	13.0	-3.2	-2.5	-2.8	-2.1	-1.8
12H	11.5	12.1	11.9	12.5	12.9	-3.0	-2.3	-2.6	-2.0	-1.6
8H 4H	11.5	12.2	11.9	12.6	13.0	-3.2	-2.5	-2.8	-2.1	-1.7
6H	11.4	12.0	11.9	12.4	12.8	-3.0	-2.4	-2.6	-2.0	-1.6
8H	11.4	11.9	11.9	12.3	12.8	-2.8	-2.3	-2.4	-1.9	-1.5
12H	11.4	11.8	11.8	12.2	12.7	-2.5	-2.0	-2.0	-1.6	-1.1
12H 4H	11.5	12.1	11.9	12.5	12.9	-3.2	-2.6	-2.8	-2.2	-1.8
6H	11.4	11.9	11.9	12.3	12.8	-3.0	-2.5	-2.5	-2.1	-1.6
8H	11.4	11.8	11.8	12.2	12.7	-2.8	-2.3	-2.3	-1.9	-1.4

Variations with the observer position at spacings(CIE Pub.117):		
S = 1.0H	+ 2.2 / - 1.8	+ 2.1 / - 4.7
1.5H	+ 3.3 / - 6.6	+ 3.3 / - 3.5
2.0H	+ 4.5 / -17.0	+ 3.2 / - 3.5

CIE Pub.117, 21.06 lm Total Lamp Luminous Flux Corrected (8log(F/F0) = -13.4)
Area: 0.002109 m2

C Range: 0 - 360DEG	γ Range: 0 - 90DEG
C Interval: 45.0DEG	γ Interval: 1.0DEG
Test Speed: HIGH	Test System:EVERFINE GO-2000H_V1 SYSTEM V2.00.456
Temperature:25.3℃	Humidity:65.0%
Operators:Chen Songyu	Test Distance:9.520m [K=1.0000]
Test Date:2025-12-09	Remarks:

UTILIZATION FACTORS TABLE

Test:U:230.46V I:0.0159A P:3.0422W PF:0.8318 Freq:49.99Hz UTHDi:0.00% ITHDi:0.00% KDisp:0 Lamp Flux:21.0576x1 lm		
Name: DL195-2.5-3W-P3	Type: 3W	Weight:
SPEC.: 4000K	DIM.:	Instrument No.: HUP-IES-B3
MFR.: EVERFINE	SUR.: 0.057*0.037	shielding angle:

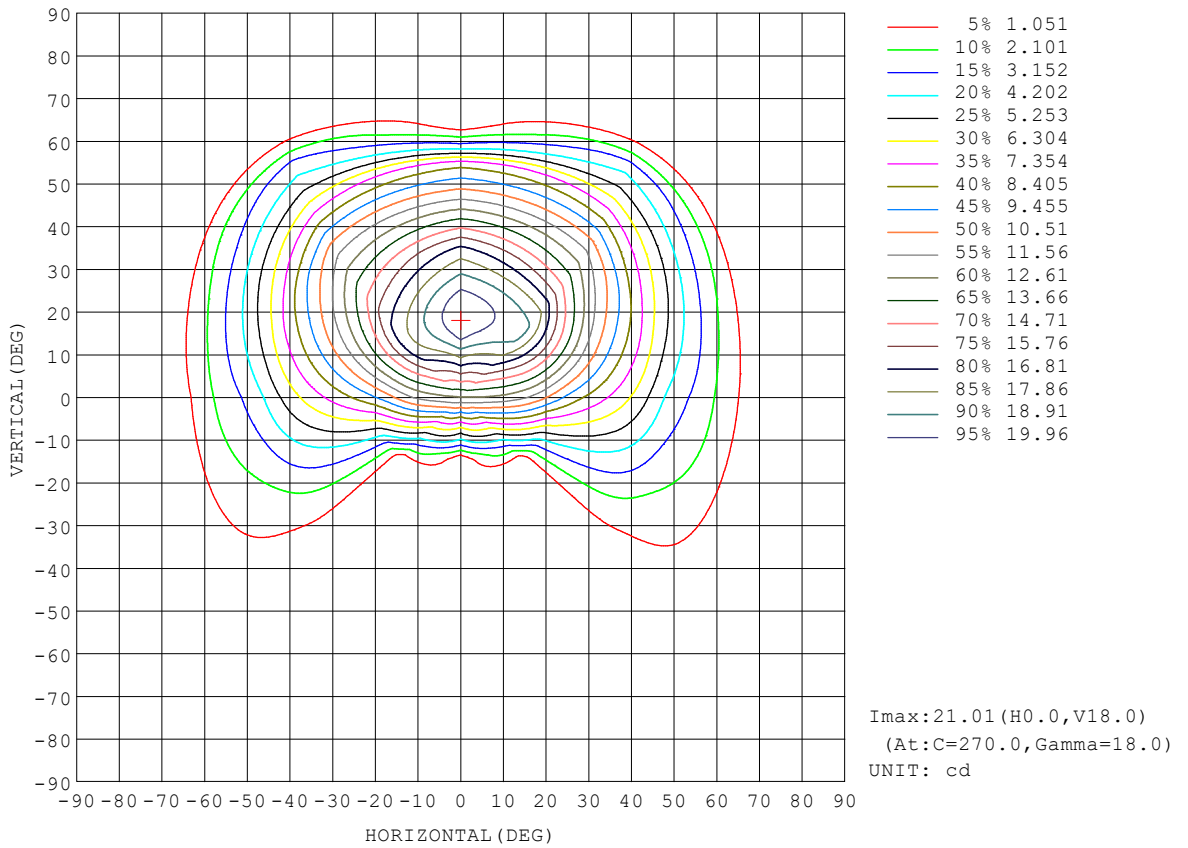
REFLECTANCE										
Ceiling	0.8	0.8	0.8	0.7	0.7	0.7	0.5	0.5	0.5	0
Walls	0.7	0.5	0.3	0.7	0.5	0.3	0.7	0.5	0.3	0
Working plane	0.2	0.2	0.2	0.2	0.2	0.2	0.2	0.2	0.2	0
ROOM INDEX	UTILIZATION FACTORS (PERCENT) $k(RI) \times RCR = 5$									
k = 0.60	67	57	51	66	56	51	65	56	50	45
0.80	77	67	61	76	67	61	75	66	61	55
1.00	86	77	71	84	76	71	82	77	70	64
1.25	92	84	79	91	83	78	88	82	77	71
1.50	96	89	84	95	88	83	92	87	82	76
2.00	102	96	91	100	95	90	97	92	89	82
2.50	105	99	95	103	98	94	99	95	92	85
3.00	107	102	98	105	101	97	102	98	95	88
4.00	110	106	103	108	104	101	104	101	98	90
5.00	112	108	105	109	106	104	105	103	101	92
ROOM INDEX	UF(total)									Direct
According to DIN EN 13032-2 2004			Suspended				SHRNOM = 1.25			

C Range: 0 - 360DEG
 C Interval: 45.0DEG
 Test Speed: HIGH
 Temperature:25.3°C
 Operators:Chen Songyu
 Test Date:2025-12-09

γ Range: 0 - 90DEG
 γ Interval: 1.0DEG
 Test System:EVERFINE GO-2000H_V1 SYSTEM V2.00.456
 Humidity:65.0%
 Test Distance:9.520m [K=1.0000]
 Remarks:

ISOCANDELA DIAGRAM

Test:U:230.46V I:0.0159A P:3.0422W PF:0.8318 Freq:49.99Hz UTHDi:0.00% ITHDi:0.00% KDisp:0 Lamp Flux:21.0576x1 lm		
Name: DL195-2.5-3W-P3	Type: 3W	Weight:
SPEC.: 4000K	DIM.:	Instrument No.: HUP-IES-B3
MFR.: EVERFINE	SUR.: 0.057*0.037	shielding angle:

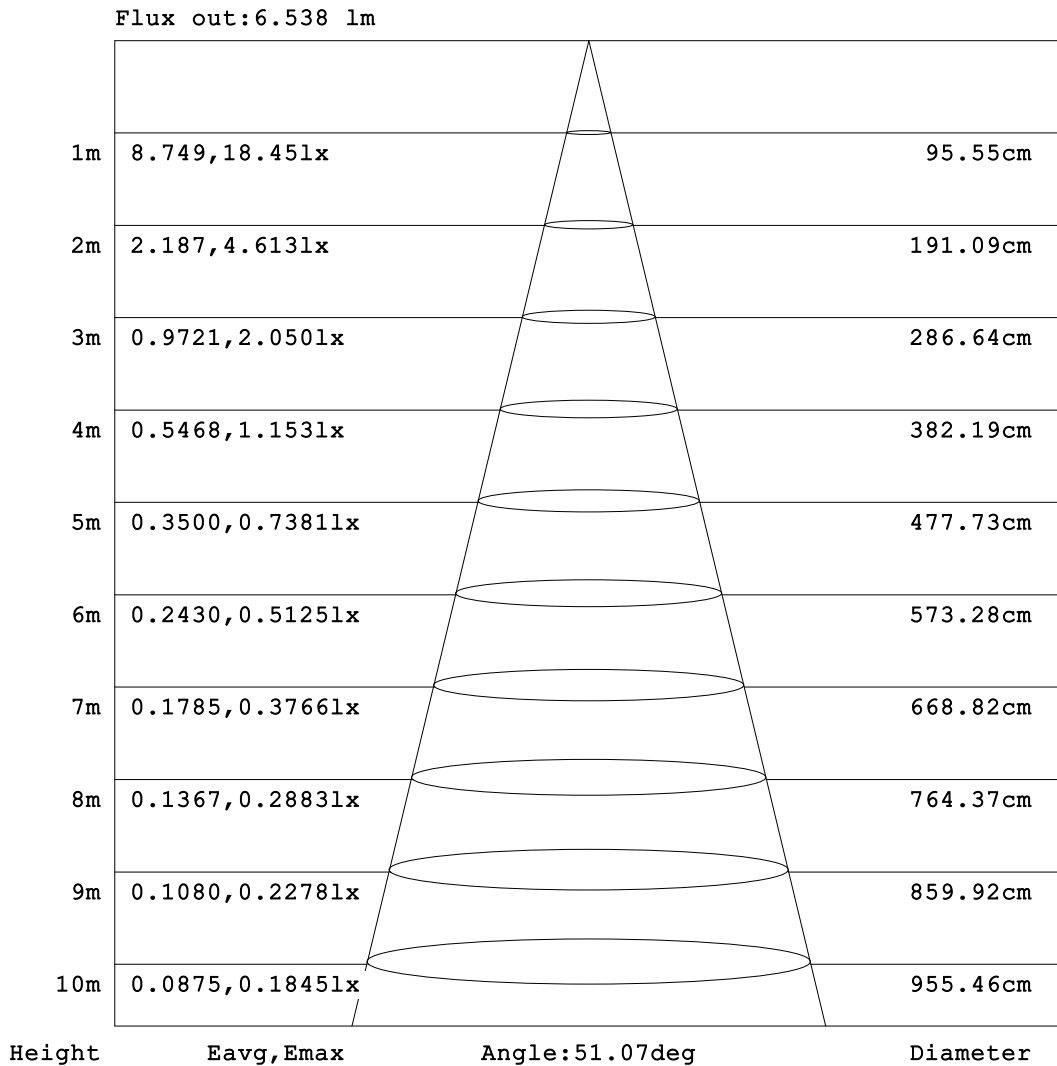


C Range: 0 - 360DEG
 C Interval: 45.0DEG
 Test Speed: HIGH
 Temperature:25.3℃
 Operators:Chen Songyu
 Test Date:2025-12-09

γ Range: 0 - 90DEG
 γ Interval: 1.0DEG
 Test System:EVERFINE GO-2000H_V1 SYSTEM V2.00.456
 Humidity:65.0%
 Test Distance:9.520m [K=1.0000]
 Remarks:

AAI Figure

Test:U:230.46V I:0.0159A P:3.0422W PF:0.8318 Freq:49.99Hz UTHDi:0.00% ITHDi:0.00% KDisp:0 Lamp Flux:21.0576x1 lm		
Name: DL195-2.5-3W-P3	Type: 3W	Weight:
SPEC.: 4000K	DIM.:	Instrument No.: HUP-IES-B3
MFR.: EVERFINE	SUR.: 0.057*0.037	shielding angle:



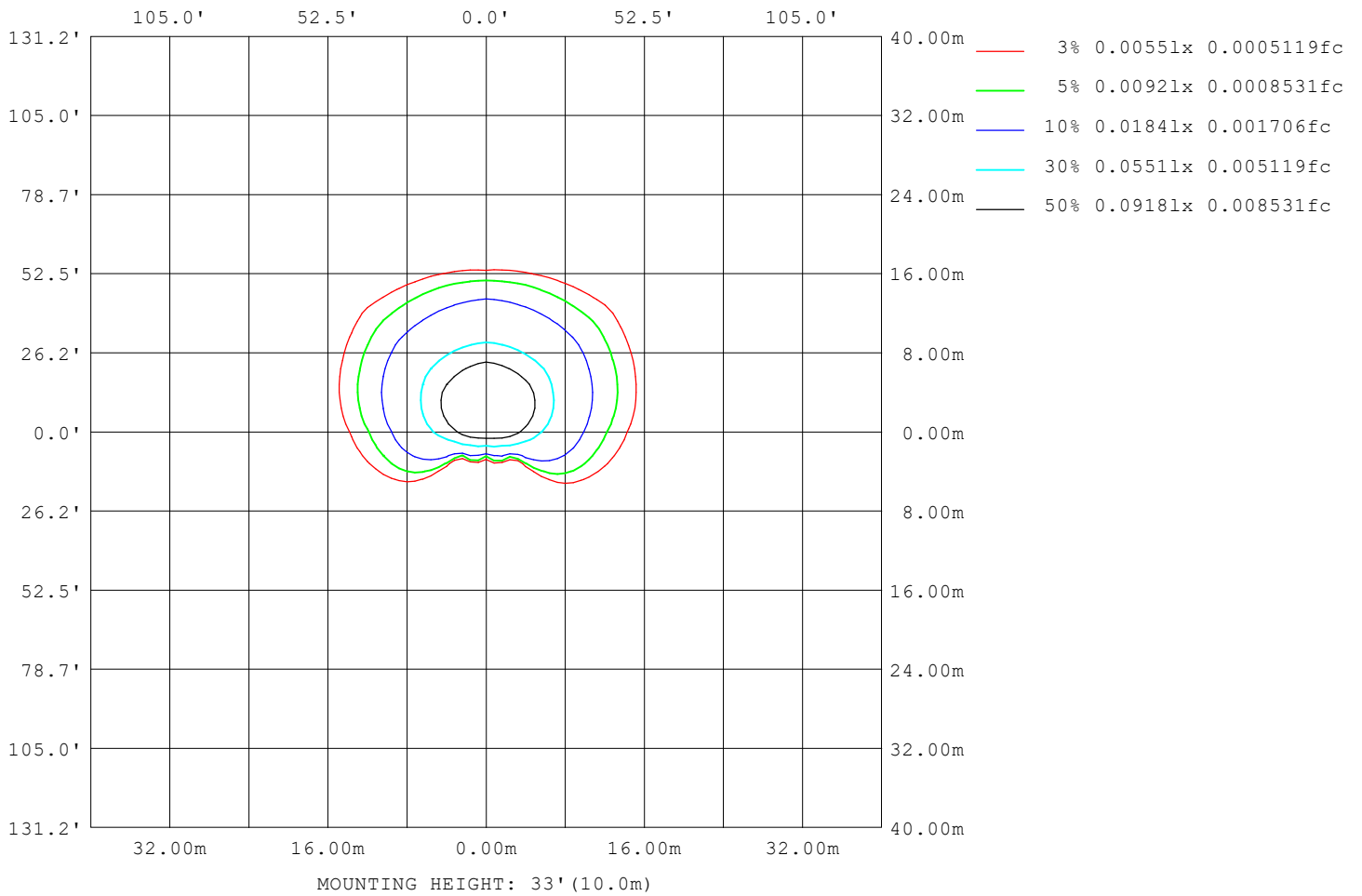
Note:The Curves indicate the illuminated area and the average illumination when the luminaire is at different distance.

C Range: 0 - 360DEG
C Interval: 45.0DEG
Test Speed: HIGH
Temperature:25.3°C
Operators:Chen Songyu
Test Date:2025-12-09

γ Range: 0 - 90DEG
γ Interval: 1.0DEG
Test System:EVERFINE GO-2000H_V1 SYSTEM V2.00.456
Humidity:65.0%
Test Distance:9.520m [K=1.0000]
Remarks:

ISOLUX DIAGRAM

Test:U:230.46V I:0.0159A P:3.0422W PF:0.8318 Freq:49.99Hz UTHDi:0.00% ITHDi:0.00% KDisp:0 Lamp Flux:21.0576x1 lm		
Name: DL195-2.5-3W-P3	Type: 3W	Weight:
SPEC.: 4000K	DIM.:	Instrument No.: HUP-IES-B3
MFR.: EVERFINE	SUR.: 0.057*0.037	shielding angle:



C Range: 0 - 360DEG
 C Interval: 45.0DEG
 Test Speed: HIGH
 Temperature:25.3°C
 Operators:Chen Songyu
 Test Date:2025-12-09

γ Range: 0 - 90DEG
 γ Interval: 1.0DEG
 Test System:EVERFINE GO-2000H_V1 SYSTEM V2.00.456
 Humidity:65.0%
 Test Distance:9.520m [K=1.0000]
 Remarks:

LED Avg.L Report

Test:U:230.46V I:0.0159A P:3.0422W PF:0.8318 Freq:49.99Hz UTHDi:0.00% ITHDi:0.00% KDisp:0 Lamp Flux:21.0576x1 lm		
Name: DL195-2.5-3W-P3	Type: 3W	Weight:
SPEC.: 4000K	DIM.:	Instrument No.: HUP-IES-B3
MFR.: EVERFINE	SUR.: 0.057*0.037	shielding angle:

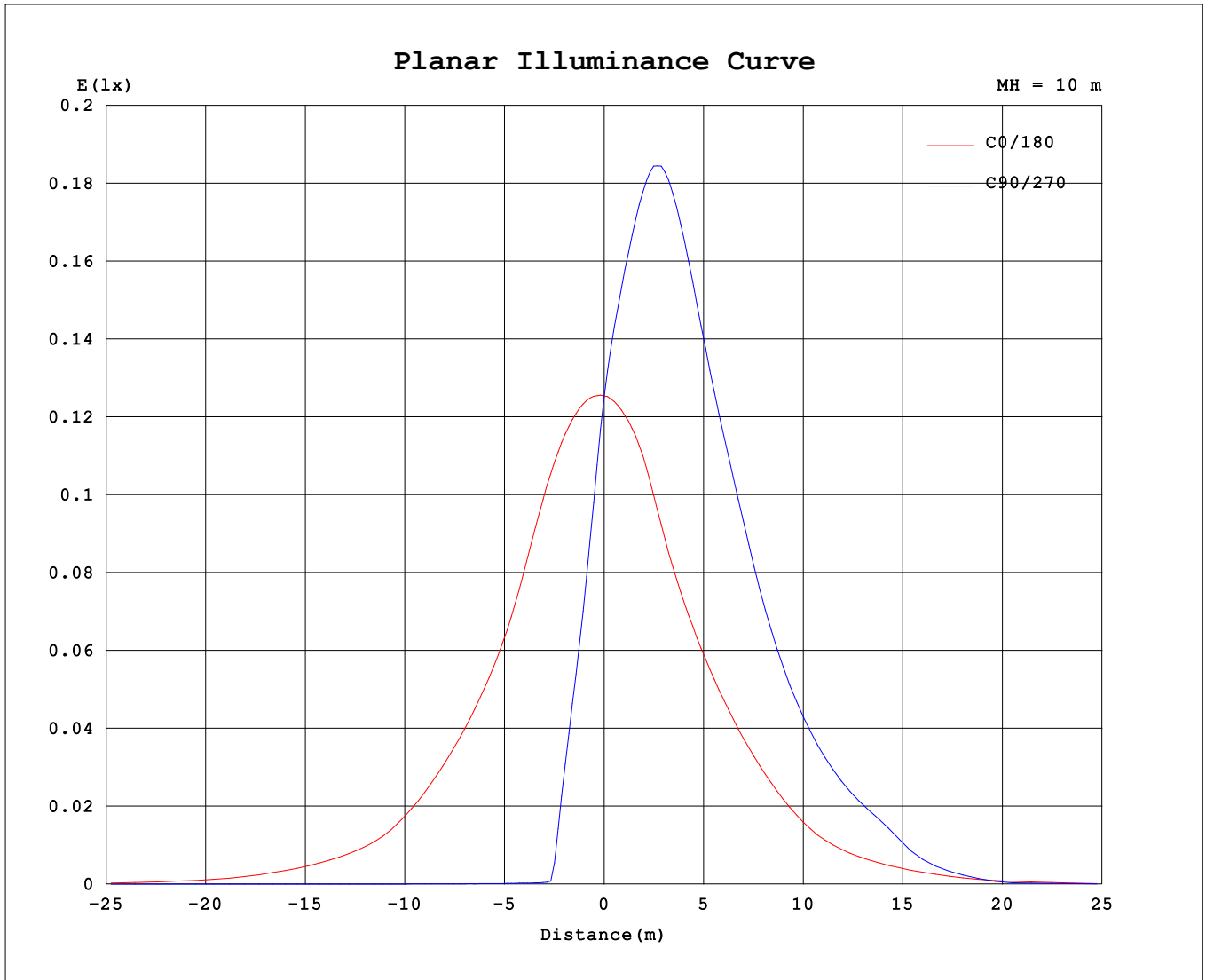
AvgL	cd/m2
L_0~180 (65) av	1062
L_0~180 (75) av	56
L_0~180 (85) av	110
L_90~270 (65) av	249
L_90~270 (75) av	45
L_90~270 (85) av	87
L_45 (65) av	1402
L_45 (75) av	116
L_45 (85) av	102

Standard: GB/T 29293-2012

C Range: 0 - 360DEG
 C Interval: 45.0DEG
 Test Speed: HIGH
 Temperature:25.3℃
 Operators:Chen Songyu
 Test Date:2025-12-09

γ Range: 0 - 90DEG
 γ Interval: 1.0DEG
 Test System:EVERFINE GO-2000H_V1 SYSTEM V2.00.456
 Humidity:65.0%
 Test Distance:9.520m [K=1.0000]
 Remarks:

Planar Illuminance Curve



C Range: 0 - 360DEG
 C Interval: 45.0DEG
 Test Speed: HIGH
 Temperature: 25.3 °C
 Operators: Chen Songyu
 Test Date: 2025-12-09

γ Range: 0 - 90DEG
 γ Interval: 1.0DEG
 Test System: EVERFINE GO-2000H_V1 SYSTEM V2.00.456
 Humidity: 65.0%
 Test Distance: 9.520m [K=1.0000]
 Remarks:

