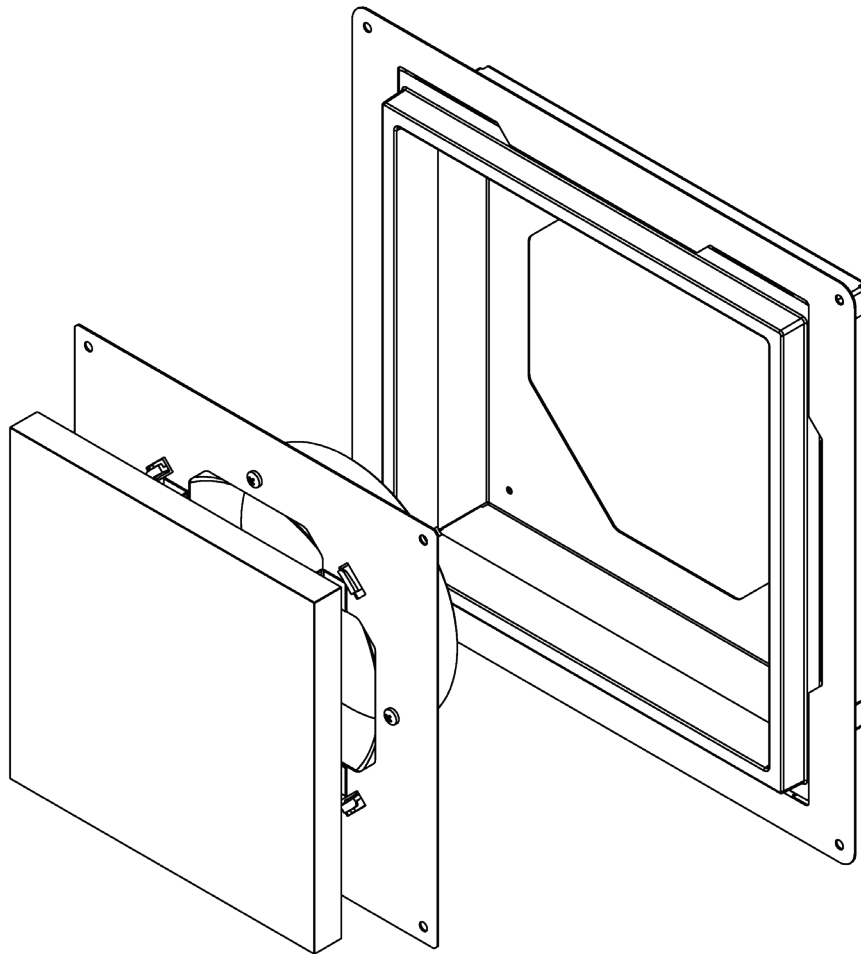


### VIG2 - ILLUSION ARCHITECTURAL GRILLE

---



---

#### VYNCO INDUSTRIES (NZ) LIMITED

##### CHRISTCHURCH

388 Tuam Street, Phillipstown, Christchurch, 8011  
PO Box 9022, Tower Junction, Christchurch 8149  
New Zealand  
P +64 3 379 9283 F +64 3 379 6838  
E [sales@vynco.co.nz](mailto:sales@vynco.co.nz)

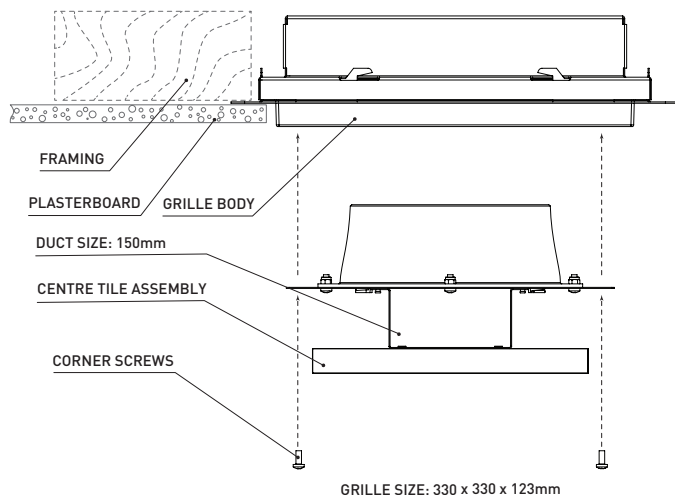
**VYNCO.CO.NZ**

##### AUCKLAND

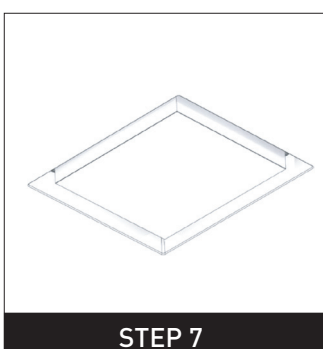
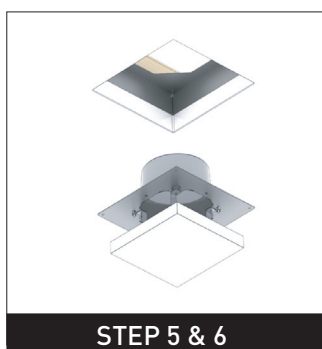
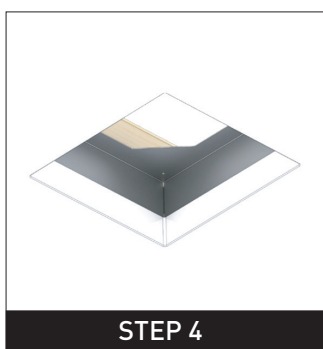
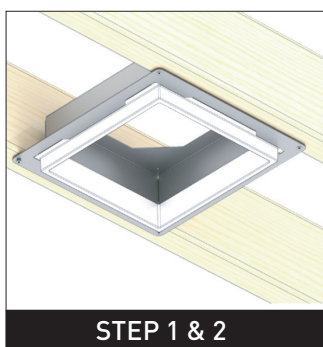
9 Levene Place, Mount Wellington  
PO Box 12 249, Penrose, Auckland 1061  
New Zealand  
P +64 9 525 6051 F +64 9 525 5799

### VIG2 - ILLUSION ARCHITECTURAL GRILLE

#### FITTING DIAGRAM



#### INSTALLATION DIAGRAM



#### INSTALLATION PROCEDURE

##### STEP 1

Remove centre tile assembly from grille by removing 4x corner screws.

##### STEP 2

Secure body of grille to ceiling framing / battens, ensuring that plaster step will finish flush with the outer surface of plasterboard when installed.

##### STEP 3

Cut out 268mm square in plasterboard and secure around grille (cutting template supplied).

##### STEP 4

Plaster, sand and finish join between plasterboard and grille. Note: plaster step of grille can be sanded as required to achieve flush finish.

##### STEP 5

Paint grille, ceiling and if desired grille centre tile to ceiling colour. Ensure internal edge of grille plaster step is painted.

##### STEP 6

Pull ducting through centre opening and secure to spigot on centre tile assembly with duct tape.

##### STEP 7

Insert centre tile assembly and duct into installed grille body and secure with 4x corner screws.

#### WARRANTY

This product is covered by the standard 5 Year Vynco Warranty - proof of purchase is required. Please contact Vynco for details of returns procedure.

**NOTE:** This product contains NO user serviceable parts.