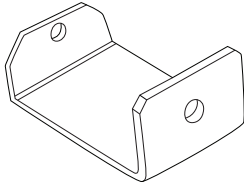


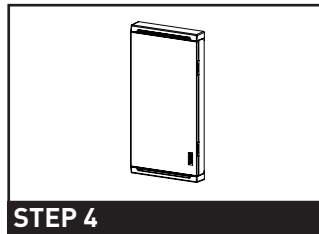
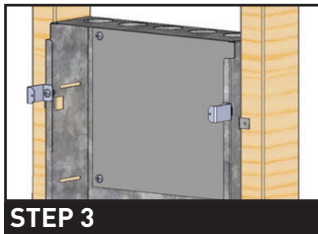
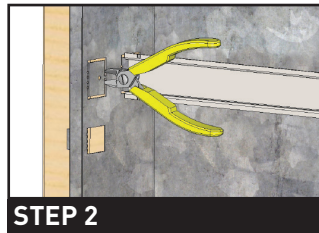
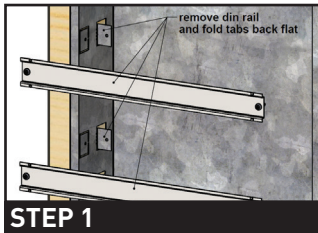
### VMCB - VM RANGE CONVERSION BRACKET KIT



#### WARRANTY

This product is covered by a 1 Year Vynco Warranty - proof of purchase is required. Please contact Vynco for details of returns procedure.

#### INSTALLATION DIAGRAM



#### FITMENT

The conversion brackets (x4) are intended to convert a shallow VMC board into a deep VMC board. In order to complete the conversion process, 2 items are required:

- 1 x Deep cover assembly VMC34DC or VMC51DC
- 1 x VMCB Conversion bracket kit

#### INSTALLATION PROCEDURE

##### STEP 1

Remove all DIN rails and fold back existing DIN rail mount until it is flush with the vertical wall of the enclosure.

##### STEP 2

Directly above the existing DIN rail mount, cut the narrow joiner tab with a sharp pair of wire/side cutters and using a screwdriver, lever out the tab to 90 degrees.

##### STEP 3

Re-attach the DIN rails using the same screws but DON'T overtighten, otherwise they will strip out.

##### STEP 4

Screw 4 x brackets in position with the No. 8 screws provided. Note that the large flange sits at the bottom. From here, fit out the board as normal.

##### STEP 5

When complete, fit deep cover using M4 x 12 screws supplied.

#### VYNCO INDUSTRIES (NZ) LIMITED

##### CHRISTCHURCH

388 Tuam Street, Phillipstown, Christchurch, 8011  
PO Box 9022, Tower Junction, Christchurch 8149  
New Zealand  
P +64 3 379 9283 F +64 3 379 6838  
E sales@vynco.co.nz

**VYNCO.CO.NZ**

##### AUCKLAND

9 Levene Place, Mount Wellington  
PO Box 12 249, Penrose, Auckland 1061  
New Zealand  
P +64 9 525 6051 F +64 9 525 5799