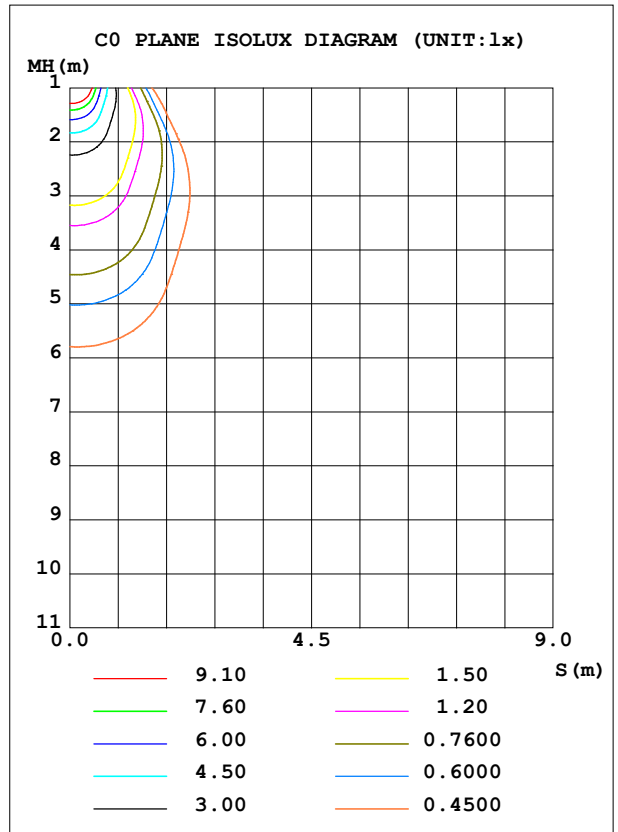
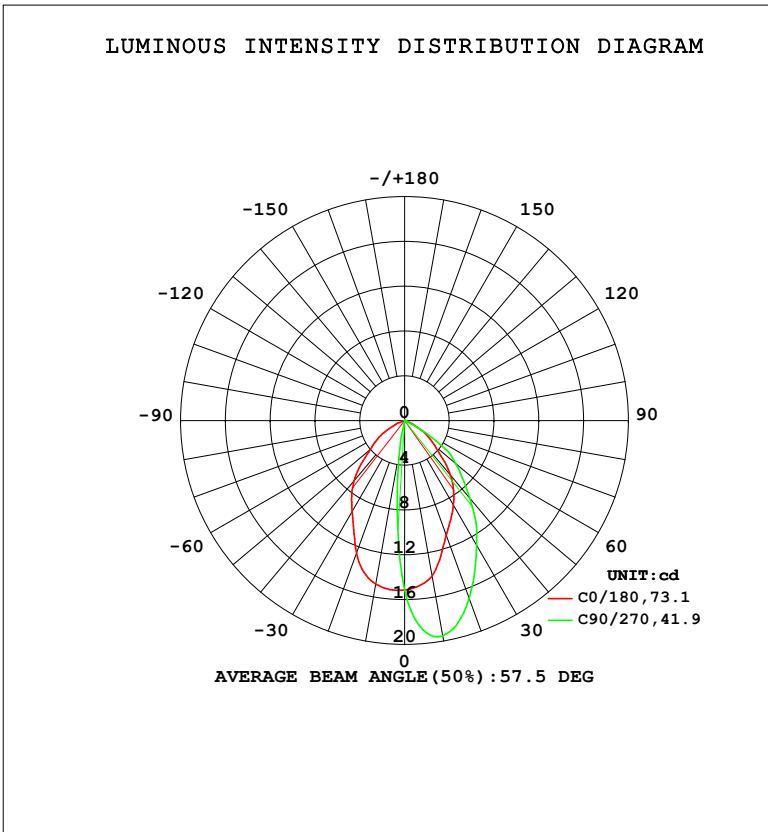


**LUMINAIRE PHOTOMETRIC TEST REPORT**

Test:U:230.46V I:0.0162A P:3.1309W PF:0.8386 Freq:49.99Hz		
UTHDi:0.00% ITHDi:0.00% KDisp:0 Lamp Flux:17.8335x1 lm		
Name: DL195-2.5-3W-P3	Type: 3W	Weight:
SPEC.: 5700K	DIM.:	Instrument No.: HUP-IES-B3
MFR.: EVERFINE	SUR.: 0.057*0.037	shielding angle:

DATA OF LAMP		PHOTOMETRIC DATA				Eff: 5.70 lm/W
MODEL	DL195-2.5-3W-P3	I <sub>max</sub> (cd)	19.53	S/MH (C0/180)	0.98	
NOMINAL POWER (W)	3	LOR (%)	100.0	S/MH (C90/270)	1.23	
RATED VOLTAGE (V)	230	TOTAL FLUX (lm)	17.833	η UP, DN (C0-180)	0.0,19.2	
NOMINAL FLUX (lm)	17.8335	CIE CLASS	DIRECT	η UP, DN (C180-360)	0.0,80.8	
LAMPS INSIDE	1	η up (%)	0.0	CIBSE SHR NOM	0.50	
TEST VOLTAGE (V)	230	η down (%)	100.0	CIBSE SHR MAX	0.70	



C Range: 0 - 360DEG  
 C Interval: 45.0DEG  
 Test Speed: HIGH  
 Temperature: 25.3 °C  
 Operators: Chen Songyu  
 Test Date: 2025-12-09

γ Range: 0 - 90DEG  
 γ Interval: 1.0DEG  
 Test System: EVERFINE GO-2000H\_V1 SYSTEM V2.00.456  
 Humidity: 65.0%  
 Test Distance: 9.520m [K=1.0000]  
 Remarks:

ZONAL FLUX DIAGRAM

ZONAL FLUX DIAGRAM:

$\gamma$	C0	C45	C90	C135	C180	C225	C270	C315	$\gamma$	$\Phi$ zone	$\Phi$ total	%lum,lamp
10	14.83	5.231	2.608	5.038	14.13	18.62	19.53	18.90	0- 10	1.284	1.284	7.2,7.2
20	12.61	0.2314	0.0408	0.1323	10.91	16.01	16.88	17.34	10- 20	3.011	4.295	24.1,24.1
30	9.392	0.0173	0.0290	0.0172	8.727	11.94	12.87	12.94	20- 30	3.711	8.006	44.9,44.9
40	7.033	0.0173	0.0204	0.0172	6.392	8.876	9.073	9.142	30- 40	3.761	11.77	66,66
50	3.989	0.0173	0.0204	0.0172	3.544	5.862	5.959	5.992	40- 50	3.164	14.93	83.7,83.7
60	2.089	0.0173	0.0175	0.0172	1.703	3.011	1.970	3.107	50- 60	2.098	17.03	95.5,95.5
70	0.2888	0.0173	0.0175	0.0172	0.1419	0.3089	0.1652	0.2651	60- 70	0.7293	17.76	99.6,99.6
80	0.0261	0.0173	0.0175	0.0172	0.0174	0.0289	0.0145	0.0288	70- 80	0.0565	17.81	99.9,99.9
90	0.0174	0.0173	0.0175	0.0172	0.0174	0.0144	0.0145	0.0144	80- 90	0.0196	17.83	100,100
100									90-100			
110									100-110			
120									110-120			
130									120-130			
140									130-140			
150									140-150			
160									150-160			
170									160-170			
180									170-180			
DEG	LUMINOUS INTENSITY:cd									UNIT:lm		

Conical surface Flux(90deg): 13.467 lm

%lum = 75.5%

%lamp = 75.5%

Conical surface Flux(120deg): 17.028 lm

%lum = 95.5%

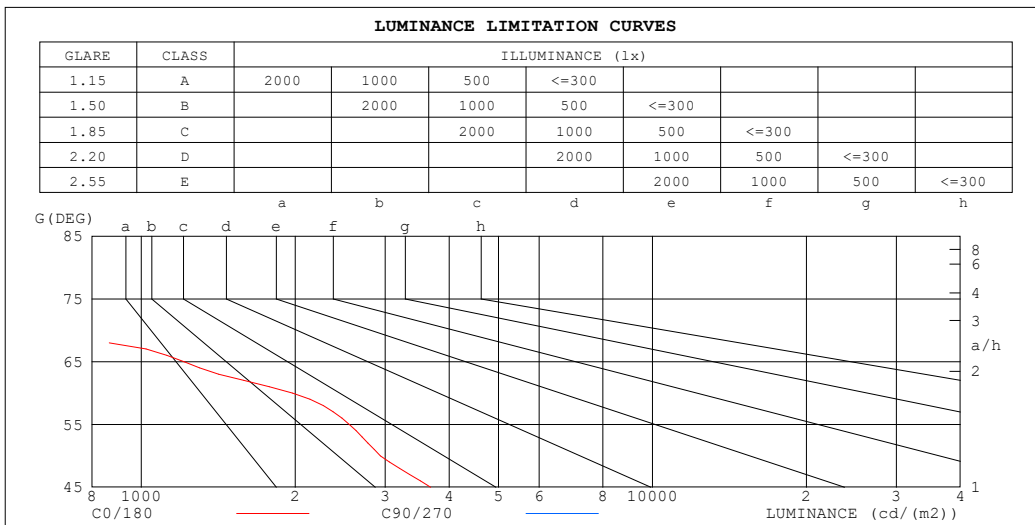
%lamp = 95.5%

C Range: 0 - 360DEG  
 C Interval: 45.0DEG  
 Test Speed: HIGH  
 Temperature:25.3°C  
 Operators:Chen Songyu  
 Test Date:2025-12-09

$\gamma$  Range: 0 - 90DEG  
 $\gamma$  Interval: 1.0DEG  
 Test System:EVERFINE GO-2000H\_V1 SYSTEM V2.00.456  
 Humidity:65.0%  
 Test Distance:9.520m [K=1.0000]  
 Remarks:

**LUMINANCE LIMITATION CURVES**

<b>Test:U:230.46V I:0.0162A P:3.1309W PF:0.8386 Freq:49.99Hz</b> <b>UTHDi:0.00% ITHDi:0.00% KDisp:0 Lamp Flux:17.8335x1 lm</b>		
<b>Name: DL195-2.5-3W-P3</b>	<b>Type: 3W</b>	<b>Weight:</b>
<b>SPEC.: 5700K</b>	<b>DIM.:</b>	<b>Instrument No.: HUP-IES-B3</b>
<b>MFR.: EVERFINE</b>	<b>SUR.: 0.057*0.037</b>	<b>shielding angle:</b>



LUMINANCE cd/(m2)		
G (DEG)	C0/180	C90/270
85	110	94
80	71	47
75	64	32
70	400	24
65	1212	19
60	1977	16
55	2552	14
50	2937	15
45	3684	14

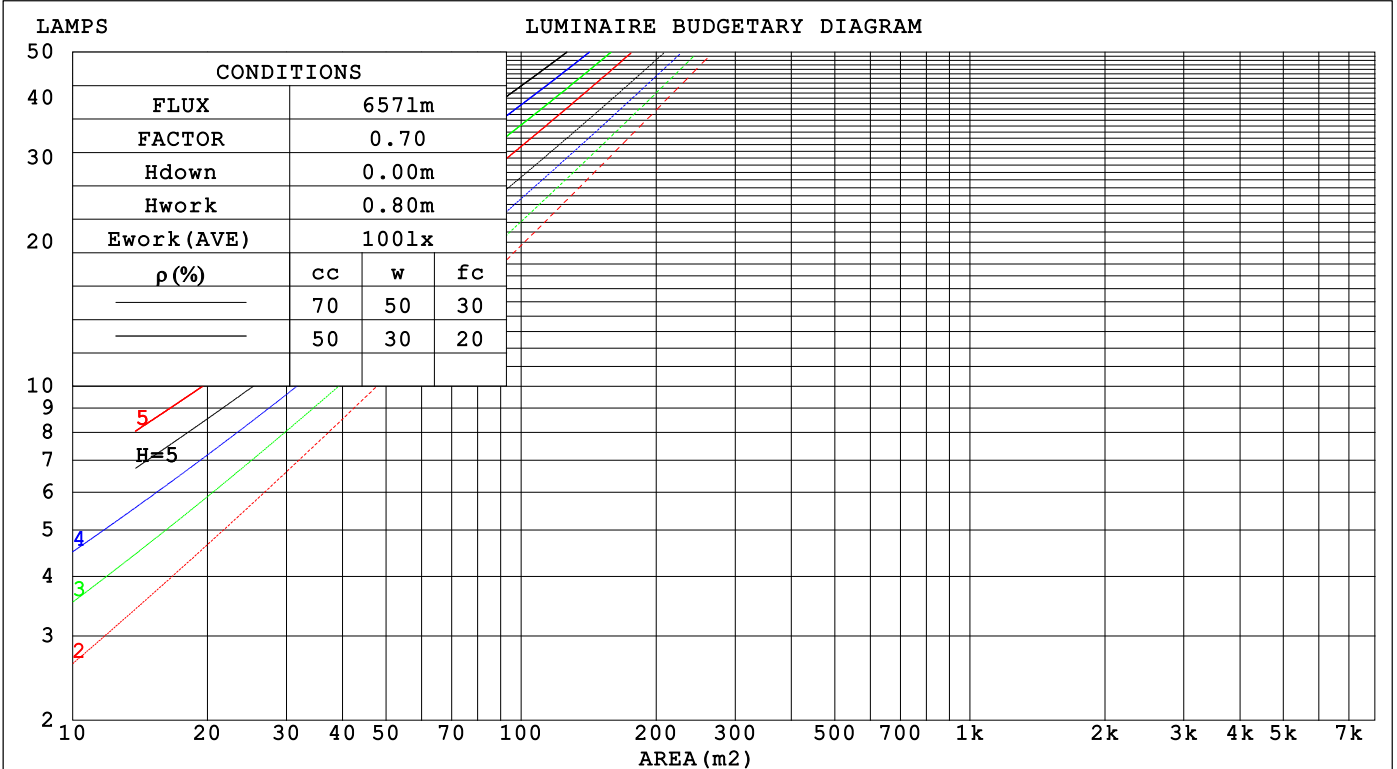
C Range: 0 - 360DEG  
 C Interval: 45.0DEG  
 Test Speed: HIGH  
 Temperature:25.3℃  
 Operators:Chen Songyu  
 Test Date:2025-12-09

γ Range: 0 - 90DEG  
 γ Interval: 1.0DEG  
 Test System:EVERFINE GO-2000H\_V1 SYSTEM V2.00.456  
 Humidity:65.0%  
 Test Distance:9.520m [K=1.0000]  
 Remarks:

**CU AND LUMINAIRE BUDGETARY ESTIMATE DIAGRAM**

Test:U:230.46V I:0.0162A P:3.1309W PF:0.8386 Freq:49.99Hz		
UTHdi:0.00% ITHdi:0.00% KDisp:0 Lamp Flux:17.8335x1 lm		
Name: DL195-2.5-3W-P3	Type: 3W	Weight:
SPEC.: 5700K	DIM.:	Instrument No.: HUP-IES-B3
MFR.: EVERFINE	SUR.: 0.057*0.037	shielding angle:

pcc	80%			70%			50%			30%			10%			0
pw	50%	30%	10%	50%	30%	10%	50%	30%	10%	50%	30%	10%	50%	30%	10%	0
pfc	20%			20%			20%			20%			20%			0
RCR	RCR:Room Cavity Ratio															
	Coefficients of Utilization(CU)															
0.0	1.19	1.19	1.19	1.16	1.16	1.16	1.11	1.11	1.11	1.06	1.06	1.06	1.02	1.02	1.02	1.00
1.0	1.08	1.05	1.03	1.06	1.04	1.01	1.02	.90	.98	.98	.97	.95	.95	.93	.92	.90
2.0	.98	.93	.89	.96	.92	.88	.93	.89	.86	.90	.87	.84	.87	.85	.82	.80
3.0	.89	.83	.78	.88	.82	.77	.85	.80	.76	.82	.78	.75	.80	.76	.73	.71
4.0	.81	.74	.69	.80	.73	.68	.77	.72	.67	.75	.70	.66	.73	.69	.66	.64
5.0	.74	.67	.61	.73	.66	.61	.71	.65	.60	.69	.64	.60	.67	.63	.59	.57
6.0	.68	.60	.55	.67	.60	.55	.65	.59	.54	.64	.58	.54	.62	.57	.54	.52
7.0	.63	.55	.50	.62	.55	.50	.60	.54	.49	.59	.53	.49	.58	.53	.49	.47
8.0	.58	.51	.46	.57	.50	.45	.56	.50	.45	.55	.49	.45	.54	.49	.45	.43
9.0	.54	.47	.42	.53	.46	.42	.52	.46	.42	.51	.46	.41	.50	.45	.41	.40
10.0	.50	.43	.39	.50	.43	.39	.49	.43	.38	.48	.42	.38	.47	.42	.38	.37



C Range: 0 - 360DEG  
 C Interval: 45.0DEG  
 Test Speed: HIGH  
 Temperature:25.3°C  
 Operators:Chen Songyu  
 Test Date:2025-12-09

γ Range: 0 - 90DEG  
 γ Interval: 1.0DEG  
 Test System:EVERFINE GO-2000H\_V1 SYSTEM V2.00.456  
 Humidity:65.0%  
 Test Distance:9.520m [K=1.0000]  
 Remarks:

**WEC AND CCEC**

Test:U:230.46V I:0.0162A P:3.1309W PF:0.8386 Freq:49.99Hz UTHDi:0.00% ITHDi:0.00% KDisp:0 Lamp Flux:17.8335x1 lm		
Name: DL195-2.5-3W-P3	Type: 3W	Weight:
SPEC.: 5700K	DIM.:	Instrument No.: HUP-IES-B3
MFR.: EVERFINE	SUR.: 0.057*0.037	shielding angle:

$\rho_{CC}$	80%			70%			50%			30%			10%			0
$\rho_w$	50%	30%	10%	50%	30%	10%	50%	30%	10%	50%	30%	10%	50%	30%	10%	0
$\rho_{fc}$	20%			20%			20%			20%			20%			0
RCR	RCR:Room Cavity Ratio						Wall Exitance Coefficients(WEC)									
0.0																
1.0	.221	.126	.040	.214	.122	.039	.202	.116	.037	.190	.109	.035	.179	.104	.033	
2.0	.217	.119	.036	.211	.116	.036	.200	.111	.035	.190	.106	.033	.180	.102	.032	
3.0	.208	.111	.033	.203	.109	.033	.193	.105	.032	.184	.101	.031	.176	.097	.030	
4.0	.197	.103	.030	.193	.101	.030	.185	.098	.029	.177	.095	.029	.169	.092	.028	
5.0	.187	.095	.028	.183	.094	.027	.176	.091	.027	.169	.089	.026	.162	.087	.026	
6.0	.177	.089	.025	.173	.088	.025	.167	.085	.025	.161	.083	.025	.155	.082	.024	
7.0	.167	.083	.023	.164	.082	.023	.158	.080	.023	.153	.078	.023	.148	.077	.023	
8.0	.159	.077	.022	.156	.077	.022	.150	.075	.021	.146	.074	.021	.141	.072	.021	
9.0	.150	.073	.020	.148	.072	.020	.143	.071	.020	.139	.069	.020	.134	.068	.020	
10.0	.143	.069	.019	.141	.068	.019	.136	.067	.019	.132	.066	.019	.128	.065	.019	

$\rho_{CC}$	80%			70%			50%			30%			10%			0
$\rho_w$	50%	30%	10%	50%	30%	10%	50%	30%	10%	50%	30%	10%	50%	30%	10%	0
$\rho_{fc}$	20%			20%			20%			20%			20%			0
RCR	RCR:Room Cavity Ratio						Ceiling Cavity Exitance Coefficients(CCEC)									
0.0																
1.0	.190	.190	.190	.163	.163	.163	.111	.111	.111	.064	.064	.064	.020	.020	.020	
2.0	.174	.157	.141	.149	.135	.122	.102	.093	.084	.059	.054	.049	.019	.017	.016	
3.0	.162	.132	.107	.139	.114	.093	.095	.079	.065	.055	.046	.038	.018	.015	.012	
4.0	.153	.114	.083	.131	.098	.072	.090	.068	.051	.052	.040	.030	.017	.013	.010	
5.0	.144	.100	.066	.124	.086	.057	.085	.060	.040	.049	.035	.024	.016	.011	.008	
6.0	.137	.089	.054	.117	.077	.047	.081	.054	.033	.047	.032	.020	.015	.010	.006	
7.0	.130	.080	.044	.112	.069	.039	.077	.049	.027	.045	.029	.016	.014	.009	.005	
8.0	.124	.073	.037	.106	.063	.033	.073	.044	.023	.043	.026	.014	.014	.009	.005	
9.0	.118	.067	.032	.101	.058	.028	.070	.041	.020	.041	.024	.012	.013	.008	.004	
10.0	.112	.062	.028	.097	.054	.024	.067	.038	.017	.039	.022	.010	.013	.007	.003	

C Range: 0 - 360DEG  
 C Interval: 45.0DEG  
 Test Speed: HIGH  
 Temperature:25.3°C  
 Operators:Chen Songyu  
 Test Date:2025-12-09

$\gamma$  Range: 0 - 90DEG  
 $\gamma$  Interval: 1.0DEG  
 Test System:EVERFINE GO-2000H\_V1 SYSTEM V2.00.456  
 Humidity:65.0%  
 Test Distance:9.520m [K=1.0000]  
 Remarks:

**UGR(Unified Glare Rating) Table**

Test:U:230.46V I:0.0162A P:3.1309W PF:0.8386 Freq:49.99Hz UTHDi:0.00% ITHDi:0.00% KDisp:0 Lamp Flux:17.8335x1 lm		
Name: DL195-2.5-3W-P3	Type: 3W	Weight:
SPEC.: 5700K	DIM.:	Instrument No.: HUP-IES-B3
MFR.: EVERFINE	SUR.: 0.057*0.037	shielding angle:

ceiling/cavity	0.7	0.7	0.5	0.5	0.3	0.7	0.7	0.5	0.5	0.3
walls	0.5	0.3	0.5	0.3	0.3	0.5	0.3	0.5	0.3	0.3
working plane	0.2	0.2	0.2	0.2	0.2	0.2	0.2	0.2	0.2	0.2

Room dimensions	Viewed crosswise					Viewed endwise				
x = 2H y = 2H	12.9	14.1	13.1	14.3	14.5	-8.9	-7.6	-8.6	-7.5	-7.3
3H	13.1	14.2	13.4	14.4	14.6	-8.8	-7.7	-8.5	-7.5	-7.2
4H	13.0	14.1	13.3	14.3	14.5	-8.6	-7.5	-8.3	-7.3	-7.1
6H	12.9	13.9	13.2	14.1	14.4	-8.1	-7.2	-7.8	-6.9	-6.6
8H	12.9	13.8	13.2	14.1	14.3	-7.8	-6.8	-7.4	-6.5	-6.3
12H	12.8	13.7	13.1	14.0	14.3	-7.2	-6.3	-6.9	-6.0	-5.7
4H 2H	12.6	13.7	12.9	13.9	14.1	-2.3	-1.2	-2.0	-1.0	-0.8
3H	12.8	13.7	13.2	14.0	14.3	-2.4	-1.5	-2.1	-1.2	-1.0
4H	12.7	13.6	13.1	13.9	14.2	-2.5	-1.6	-2.1	-1.3	-1.0
6H	12.6	13.4	13.0	13.7	14.1	-2.4	-1.7	-2.0	-1.3	-1.0
8H	12.6	13.3	13.0	13.6	14.0	-2.3	-1.6	-1.9	-1.3	-0.9
12H	12.6	13.2	13.0	13.5	13.9	-2.1	-1.5	-1.7	-1.1	-0.7
8H 4H	12.6	13.3	13.0	13.6	14.0	-2.3	-1.6	-1.9	-1.2	-0.9
6H	12.5	13.1	12.9	13.5	13.9	-2.1	-1.6	-1.7	-1.2	-0.8
8H	12.5	12.9	12.9	13.4	13.8	-2.0	-1.5	-1.5	-1.1	-0.6
12H	12.4	12.8	12.9	13.3	13.8	-1.6	-1.2	-1.2	-0.8	-0.3
12H 4H	12.5	13.2	13.0	13.5	13.9	-2.3	-1.7	-1.9	-1.3	-0.9
6H	12.5	12.9	12.9	13.4	13.8	-2.1	-1.6	-1.7	-1.2	-0.8
8H	12.4	12.8	12.9	13.3	13.7	-1.9	-1.5	-1.4	-1.0	-0.6

Variations with the observer position at spacings(CIE Pub.117):		
S = 1.0H	+ 2.4 / - 1.9	+ 2.1 / - 5.0
1.5H	+ 3.5 / - 7.0	+ 3.5 / - 3.7
2.0H	+ 4.7 / -17.9	+ 3.3 / - 3.7

CIE Pub.117, 17.83 lm Total Lamp Luminous Flux Corrected (8log(F/F0) = -14.0)  
Area: 0.002109 m2

C Range: 0 - 360DEG	γ Range: 0 - 90DEG
C Interval: 45.0DEG	γ Interval: 1.0DEG
Test Speed: HIGH	Test System:EVERFINE GO-2000H_V1 SYSTEM V2.00.456
Temperature:25.3℃	Humidity:65.0%
Operators:Chen Songyu	Test Distance:9.520m [K=1.0000]
Test Date:2025-12-09	Remarks:

**UTILIZATION FACTORS TABLE**

Test:U:230.46V I:0.0162A P:3.1309W PF:0.8386 Freq:49.99Hz UTHDi:0.00% ITHDi:0.00% KDisp:0 Lamp Flux:17.8335x1 lm		
Name: DL195-2.5-3W-P3	Type: 3W	Weight:
SPEC.: 5700K	DIM.:	Instrument No.: HUP-IES-B3
MFR.: EVERFINE	SUR.: 0.057*0.037	shielding angle:

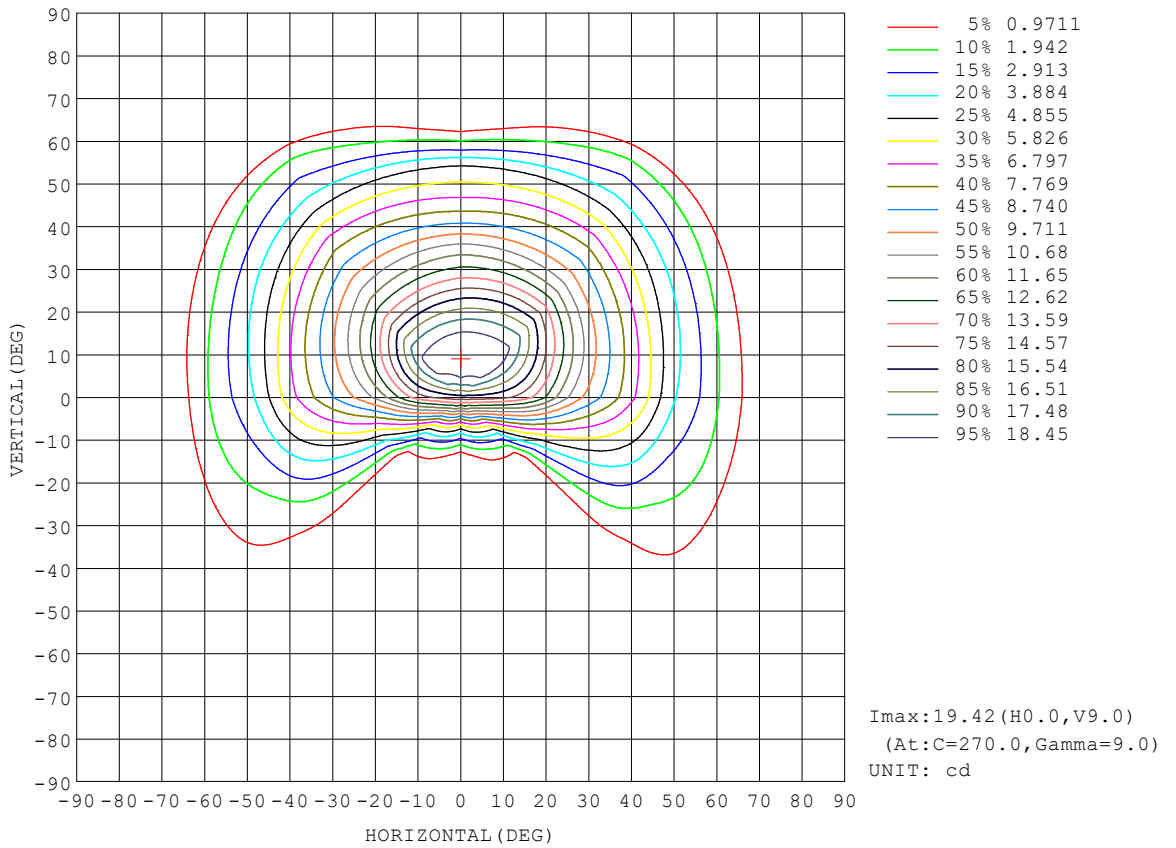
REFLECTANCE										
Ceiling	0.8	0.8	0.8	0.7	0.7	0.7	0.5	0.5	0.5	0
Walls	0.7	0.5	0.3	0.7	0.5	0.3	0.7	0.5	0.3	0
Working plane	0.2	0.2	0.2	0.2	0.2	0.2	0.2	0.2	0.2	0
ROOM INDEX	UTILIZATION FACTORS (PERCENT) $k(RI) \times RCR = 5$									
k = 0.60	70	60	54	69	60	54	68	59	54	49
0.80	80	71	65	79	70	65	77	69	64	59
1.00	87	79	74	86	79	73	84	79	73	67
1.25	94	86	81	92	85	80	90	84	80	74
1.50	98	91	86	96	90	85	94	88	84	78
2.00	103	97	92	101	96	92	98	94	90	84
2.50	105	100	96	104	99	95	100	96	93	86
3.00	108	103	99	106	102	98	102	99	96	89
4.00	111	107	103	108	105	102	105	102	99	91
5.00	112	109	106	110	107	104	106	103	101	93
ROOM INDEX	UF(total)									Direct
According to DIN EN 13032-2 2004			Suspended				SHRNOM = 1.25			

C Range: 0 - 360DEG  
 C Interval: 45.0DEG  
 Test Speed: HIGH  
 Temperature:25.3°C  
 Operators:Chen Songyu  
 Test Date:2025-12-09

γ Range: 0 - 90DEG  
 γ Interval: 1.0DEG  
 Test System:EVERFINE GO-2000H\_V1 SYSTEM V2.00.456  
 Humidity:65.0%  
 Test Distance:9.520m [K=1.0000]  
 Remarks:

**ISOCANDELA DIAGRAM**

Test:U:230.46V I:0.0162A P:3.1309W PF:0.8386 Freq:49.99Hz UTHDi:0.00% ITHDi:0.00% KDisp:0 Lamp Flux:17.8335x1 lm		
Name: DL195-2.5-3W-P3	Type: 3W	Weight:
SPEC.: 5700K	DIM.:	Instrument No.: HUP-IES-B3
MFR.: EVERFINE	SUR.: 0.057*0.037	shielding angle:

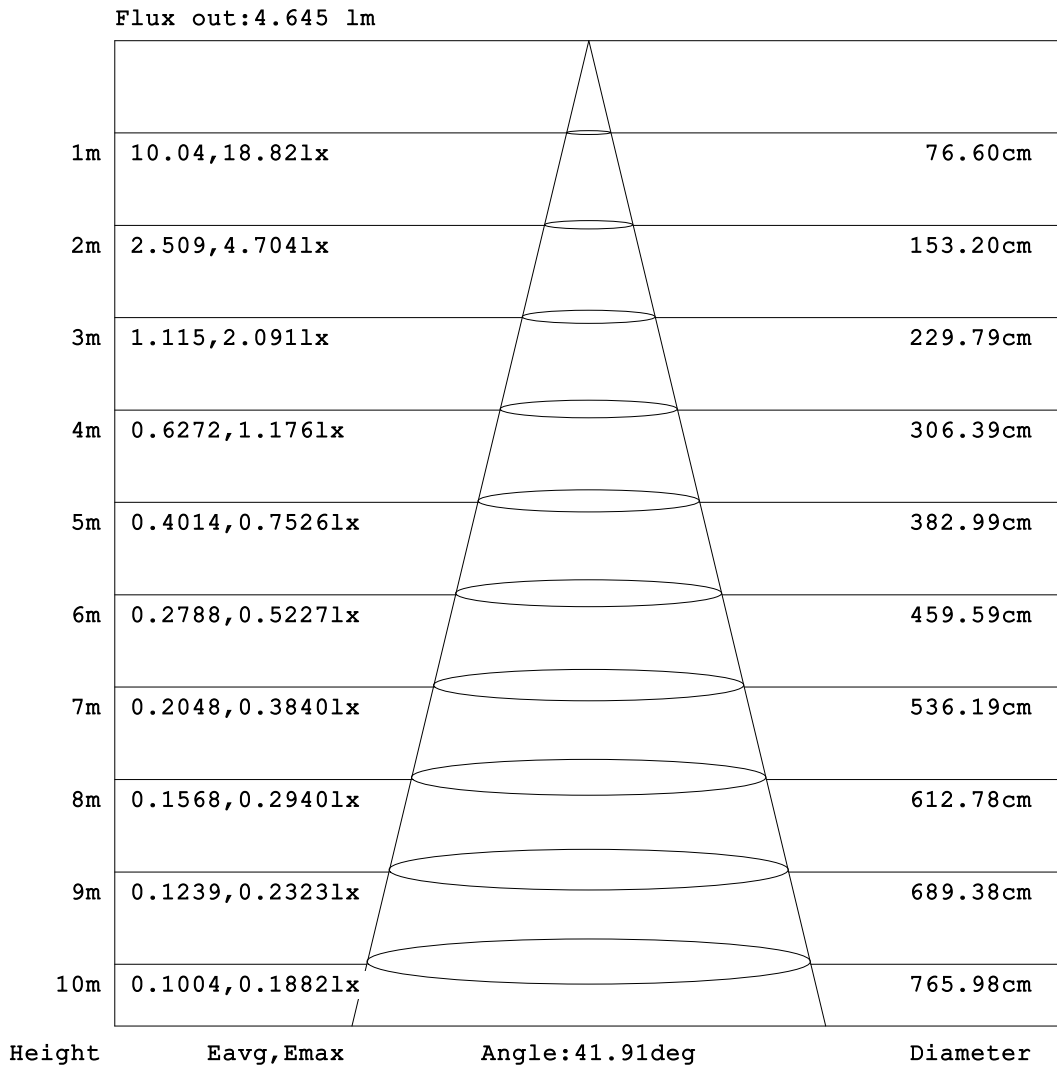


C Range: 0 - 360DEG  
 C Interval: 45.0DEG  
 Test Speed: HIGH  
 Temperature:25.3℃  
 Operators:Chen Songyu  
 Test Date:2025-12-09

γ Range: 0 - 90DEG  
 γ Interval: 1.0DEG  
 Test System:EVERFINE GO-2000H\_V1 SYSTEM V2.00.456  
 Humidity:65.0%  
 Test Distance:9.520m [K=1.0000]  
 Remarks:

**AAI Figure**

Test:U:230.46V I:0.0162A P:3.1309W PF:0.8386 Freq:49.99Hz UTHDi:0.00% ITHDi:0.00% KDisp:0 Lamp Flux:17.8335x1 lm		
Name: DL195-2.5-3W-P3	Type: 3W	Weight:
SPEC.: 5700K	DIM.:	Instrument No.: HUP-IES-B3
MFR.: EVERFINE	SUR.: 0.057*0.037	shielding angle:



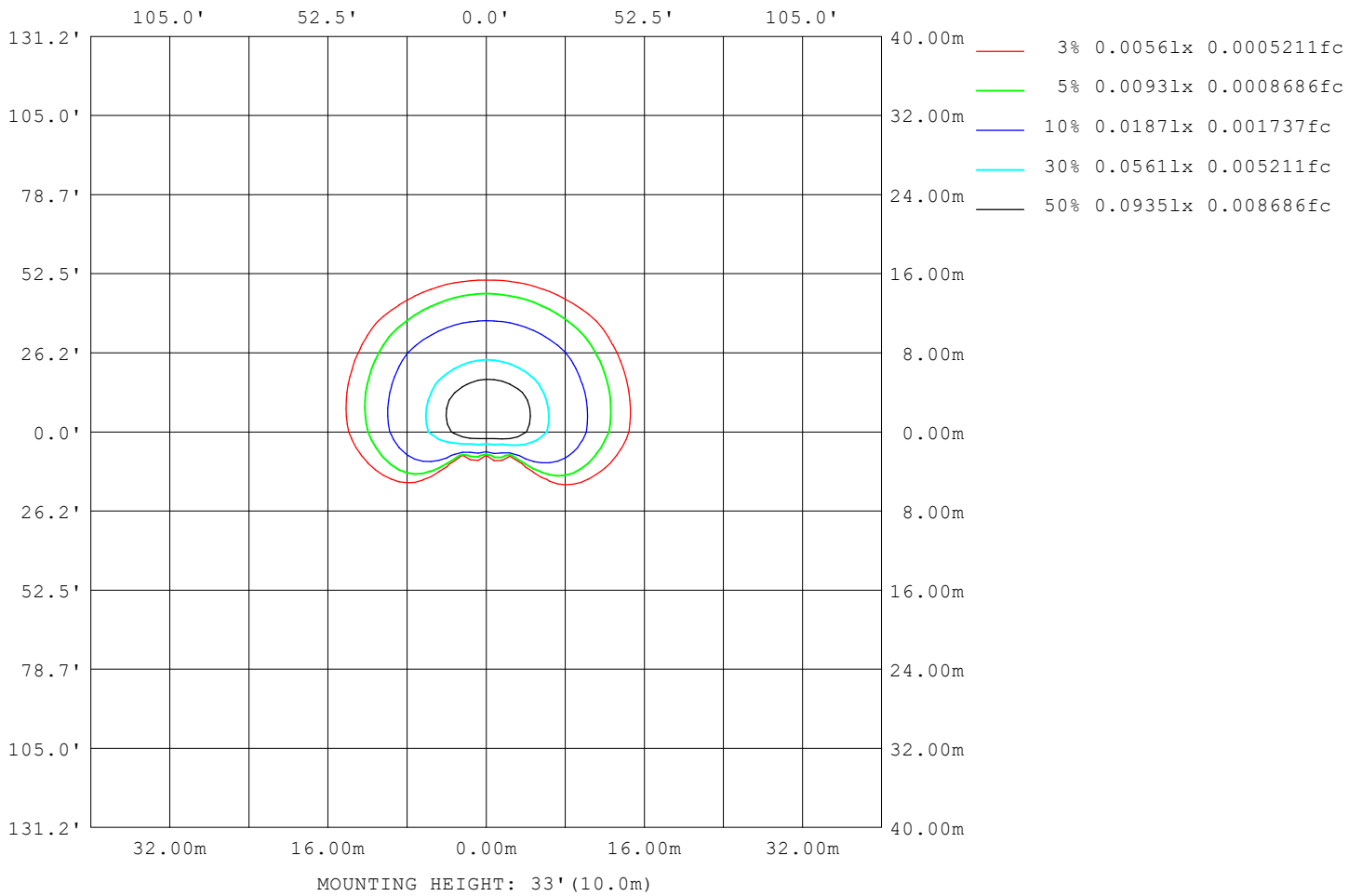
Note: The Curves indicate the illuminated area and the average illumination when the luminaire is at different distance.

C Range: 0 - 360DEG  
 C Interval: 45.0DEG  
 Test Speed: HIGH  
 Temperature: 25.3 °C  
 Operators: Chen Songyu  
 Test Date: 2025-12-09

γ Range: 0 - 90DEG  
 γ Interval: 1.0DEG  
 Test System: EVERFINE GO-2000H\_V1 SYSTEM V2.00.456  
 Humidity: 65.0%  
 Test Distance: 9.520m [K=1.0000]  
 Remarks:

**ISOLUX DIAGRAM**

Test:U:230.46V I:0.0162A P:3.1309W PF:0.8386 Freq:49.99Hz UTHDi:0.00% ITHDi:0.00% KDisp:0 Lamp Flux:17.8335x1 lm		
Name: DL195-2.5-3W-P3	Type: 3W	Weight:
SPEC.: 5700K	DIM.:	Instrument No.: HUP-IES-B3
MFR.: EVERFINE	SUR.: 0.057*0.037	shielding angle:



C Range: 0 - 360DEG  
 C Interval: 45.0DEG  
 Test Speed: HIGH  
 Temperature:25.3°C  
 Operators:Chen Songyu  
 Test Date:2025-12-09

γ Range: 0 - 90DEG  
 γ Interval: 1.0DEG  
 Test System:EVERFINE GO-2000H\_V1 SYSTEM V2.00.456  
 Humidity:65.0%  
 Test Distance:9.520m [K=1.0000]  
 Remarks:

**LED Avg.L Report**

Test:U:230.46V I:0.0162A P:3.1309W PF:0.8386 Freq:49.99Hz UTHDi:0.00% ITHDi:0.00% KDisp:0 Lamp Flux:17.8335x1 lm		
Name: DL195-2.5-3W-P3	Type: 3W	Weight:
SPEC.: 5700K	DIM.:	Instrument No.: HUP-IES-B3
MFR.: EVERFINE	SUR.: 0.057*0.037	shielding angle:

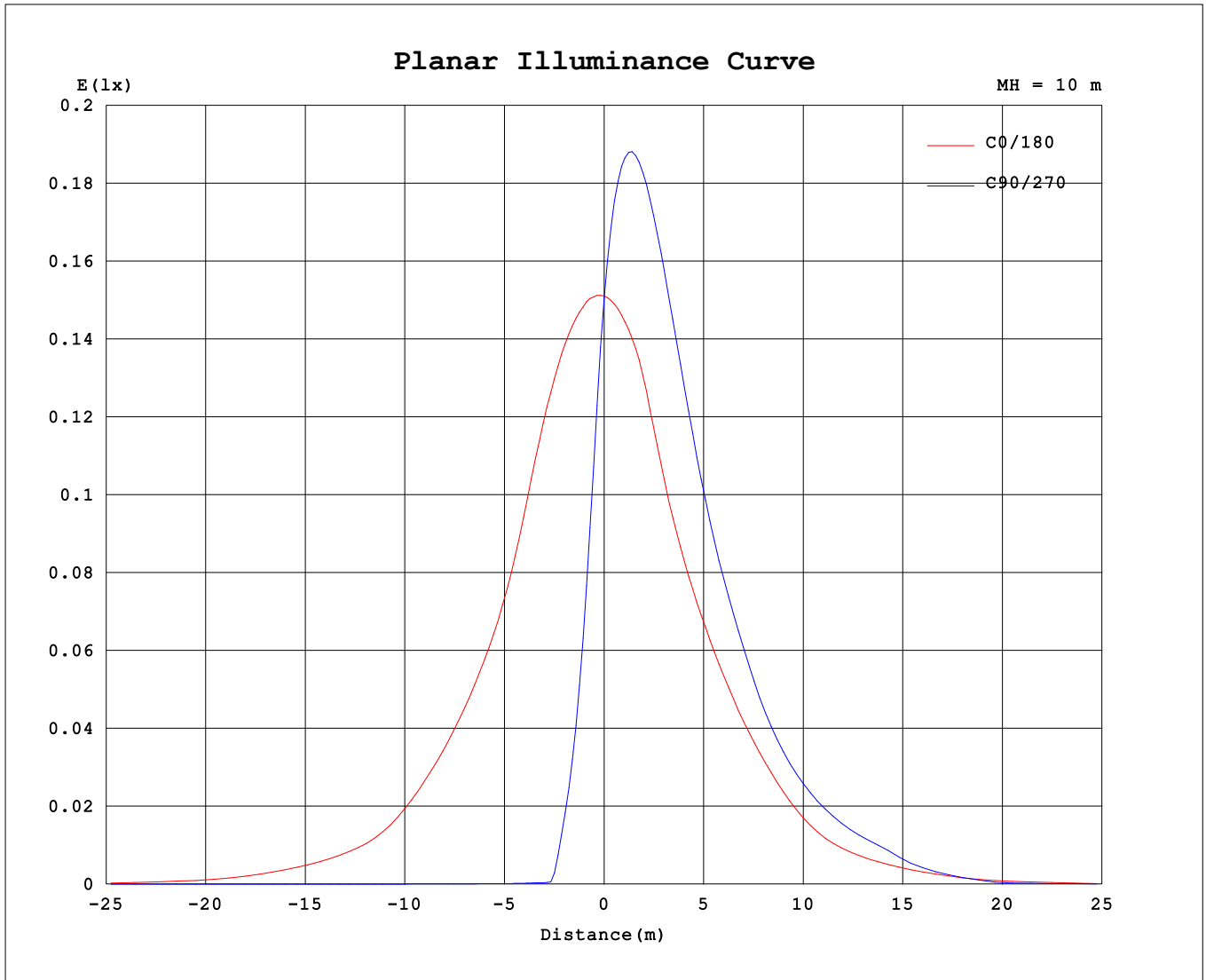
AvgL	cd/m2
L_0~180 (65) av	1069
L_0~180 (75) av	48
L_0~180 (85) av	102
L_90~270 (65) av	207
L_90~270 (75) av	40
L_90~270 (85) av	87
L_45 (65) av	931
L_45 (75) av	102
L_45 (85) av	98

Standard: GB/T 29293-2012

C Range: 0 - 360DEG  
 C Interval: 45.0DEG  
 Test Speed: HIGH  
 Temperature:25.3℃  
 Operators:Chen Songyu  
 Test Date:2025-12-09

γ Range: 0 - 90DEG  
 γ Interval: 1.0DEG  
 Test System:EVERFINE GO-2000H\_V1 SYSTEM V2.00.456  
 Humidity:65.0%  
 Test Distance:9.520m [K=1.0000]  
 Remarks:

**Planar Illuminance Curve**



C Range: 0 - 360DEG  
 C Interval: 45.0DEG  
 Test Speed: HIGH  
 Temperature: 25.3 °C  
 Operators: Chen Songyu  
 Test Date: 2025-12-09

γ Range: 0 - 90DEG  
 γ Interval: 1.0DEG  
 Test System: EVERFINE GO-2000H\_V1 SYSTEM V2.00.456  
 Humidity: 65.0%  
 Test Distance: 9.520m [K=1.0000]  
 Remarks:

