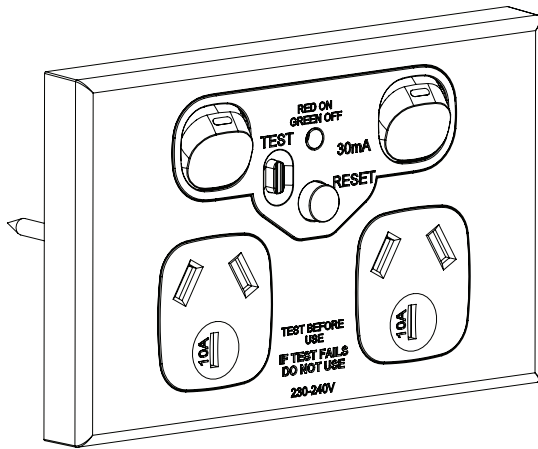



HOME / METRO RCD DOUBLE SWITCHED SOCKET 2P2HR AND MP2HR SERIES



SPECIFICATIONS

Model	2P2HR10, 2P2HR30, MP2HR10, MP2HR30
Classification	Type A  Voltage Independent
Rated Tripping Current	10mA and 30mA, Type II RCD
Supply Voltage	230 - 240V AC 50Hz
RCD - Trip Time	Typical < 35mS
Short Circuit Breaking Capacity	3kA with a 20A HRC fuse
Rated Current	20A (RCD protected circuit)
Switched Socket Current Rating	10A (each socket outlet)
RCD Contact Break	Double Pole Switching on each Socket
Standards	Switched Socket - AS/NZS 3112 RCD module - AS/NZS 3190
Minimum Back Box Depth	35mm
Fixing Screws	6-32 UNC
Cable / Terminal Capacity	4x2.5mm ² , 2x4mm ² , 1x6mm ²
IP Rating	IP30 - Indoor use only
Weight	155gm

HOME RCD DIMENSIONS

Width	115mm
Height	74mm
Depth	41.6mm

METRO RCD DIMENSIONS

Width	120mm
Height	82mm
Depth	41.6mm



WARNING: ELECTRICITY CAN BE DANGEROUS!

RCDS ARE NOT A SUBSTITUTE FOR BASIC ELECTRICAL SAFETY PRECAUTIONS. RCDS ARE ADDITIONAL PROTECTION AND WILL NOT PREVENT SHOCK BUT WILL MINIMISE THE EFFECT. RCDS WILL TRIP FOR A FAULT BETWEEN THE BODY TO EARTH, BUT NOT AGAINST ACTIVE TO NEUTRAL FAULTS.

ALWAYS DISCONNECT FROM THE MAINS SUPPLY BEFORE ANY INSPECTION OR REPAIR TO EQUIPMENT.

Should your RCD Socket trip when first powered up, repeatedly trip with an appliance connected or fail to trip when tested in accordance with these instructions. **DO NOT USE.** Please consult an electrician or the supplier.

It is recommended that the RCD Switched Socket is tested monthly to ensure it is operating correctly.

IMPORTANT INFORMATION

- This product must be installed and used as outlined in these instructions.
- This RCD remains latched and doesn't need resetting in the event of a power failure (voltage independent)
- If the unit does not operate as described in the Test procedure above. **DO NOT USE.**
- **This product contains no serviceable parts, and no attempt should be made to repair the product. If the product is faulty, it should be returned to the manufacturer or destroyed.**
- This RCD product has been designed for storage and use between -5°C and +40°C.

WARRANTY

This product is covered by the standard Vynco 12 month Warranty - proof of purchase is required.

Please contact Vynco for details of returns procedure.

VYNCO INDUSTRIES (NZ) LIMITED

CHRISTCHURCH

388 Tuam Street, Phillipstown, Christchurch, 8011
PO Box 9022, Tower Junction, Christchurch 8149
New Zealand
P +64 3 379 9283
E sales@vynco.co.nz

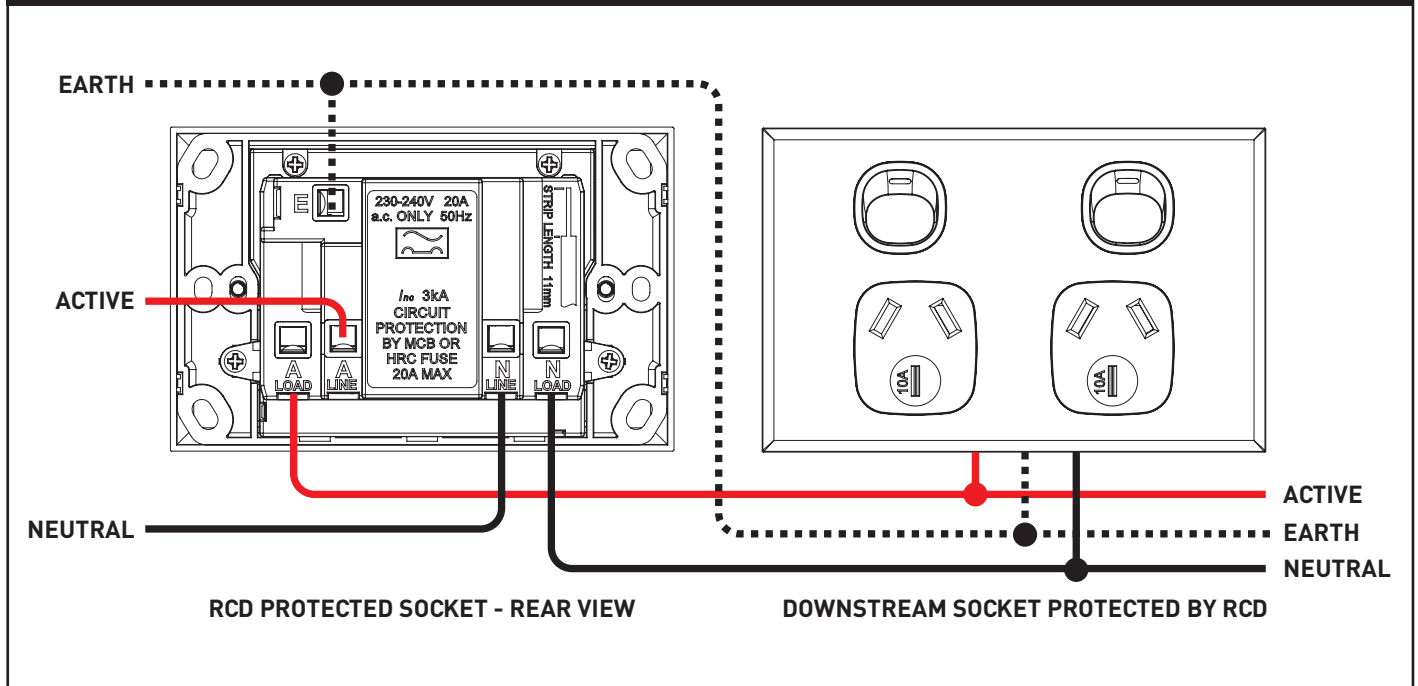
VYNCO.CO.NZ

AUCKLAND

9 Levene Place, Mount Wellington
PO Box 12 249, Penrose, Auckland 1061
New Zealand
P +64 9 525 6051

HOME / METRO RCD DOUBLE SWITCHED SOCKET 2P2HR AND MP2HR SERIES

WIRING DIAGRAM



INSTALLATION INSTRUCTIONS

Switch off the mains supply and remove the relevant fuse or switch off the appropriate MCB before commencing installation.

This RCD Protected Switched Socket must be installed by a competent or qualified person in accordance with the Australian/New Zealand Wiring Rules - AS/NZS 3000.

CAUTION: INCORRECT WIRING COULD DESTROY THE RCD.

1. Incoming supply wires **MUST ONLY** be wired to the LINE terminals.
2. Incoming supply wires **MUST NOT** be connected to the LOAD terminals. If the incoming supply wires are connected to the LOAD terminals, the LED window will show BLACK. This means the unit is **NOT** safe to use and must be re-wired correctly. The LED will show GREEN when it is wired correctly.
3. If there are two or more sets of cables in the mounting box and earth leakage protection is required in downstream circuits, the Supply and Load cables **MUST** be identified by separating and testing the circuit with a meter before connecting to the RCD Socket.
4. When the RCD Protected Socket is installed at the beginning of a circuit and wired correctly, all downstream Socket outlets will be RCD protected by this device.

This RCD Switched Socket is intended to be flush mounted in a standard sized flushbox or metal bracket. Alternatively, it can be surface mounted and will fit a Vynco 88MB37, 88MBDI or MBD Mounting Block.

OPERATION AND TEST PROCEDURE

Ensure there are NO plugs in the Socket Outlets before testing.

The RCD Socket should be tested at least once a month to ensure it operates correctly.

1. When the RCD is NOT set a GREEN indicator in the window shows power is on to the RCD. A BLACK indicator in the window indicates no power is on to the RCD.
2. Press the RESET Button and the indicator should change to RED. The RCD is latched and ready for use.
3. Press the TEST Button and the indicator changes to GREEN. This means the RCD has tripped successfully and is functioning correctly.
4. To reset, press the RESET button. The RED indicator appears, and unit is now ready to use as an RCD Protected Socket.

NOTE:

If the RED window indicator disappears, turns GREEN and there is an appliance plugged into the socket - the RCD has tripped. The appliance or the cable lead plugged into the RCD could be faulty and should be checked by an electrician or suitable qualified person.

CLEANING INSTRUCTIONS

Use a damp cloth, moistened with water to wipe down this RCD Protected Socket.

DO NOT use solvents or spray cleaners on this product.