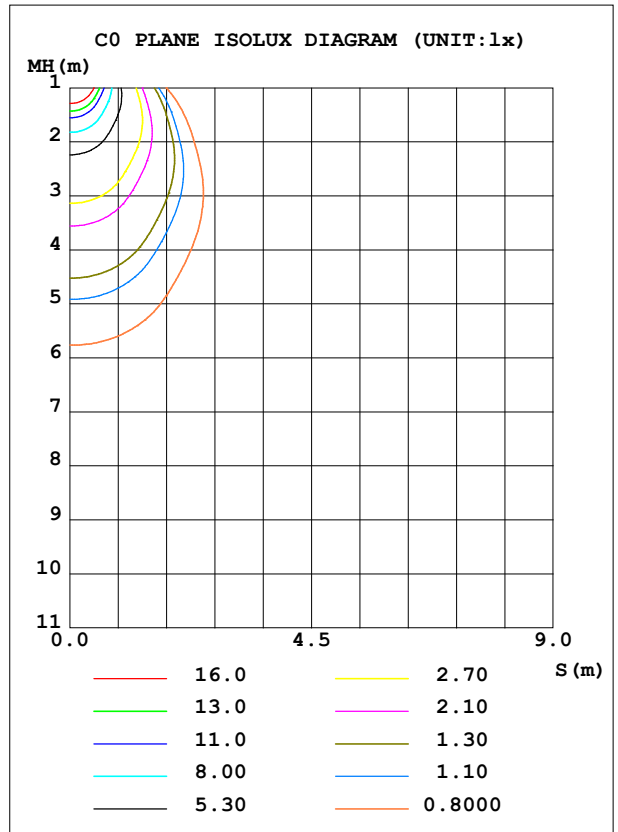
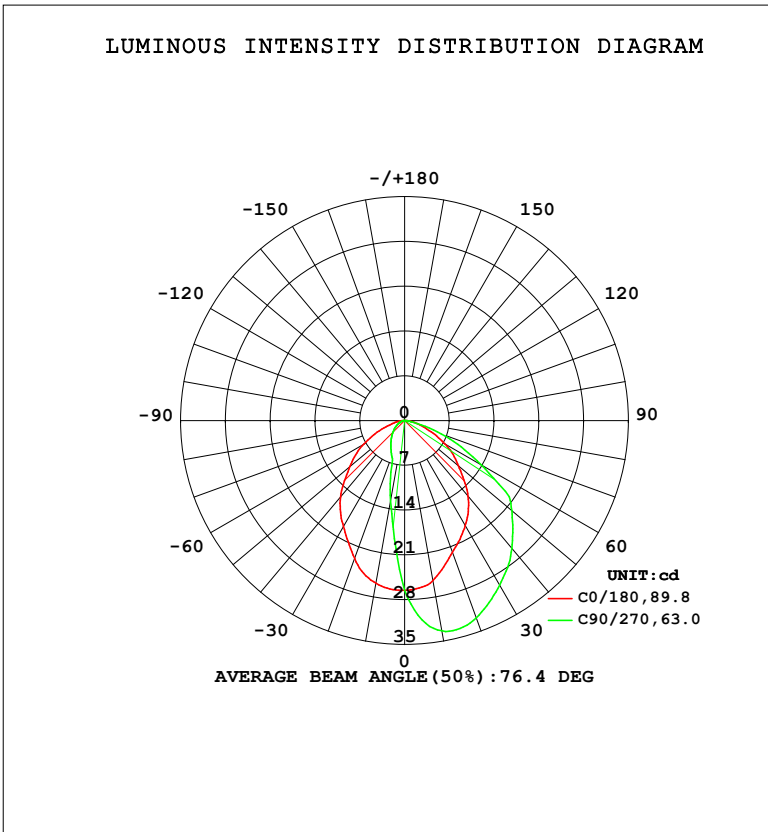


**LUMINAIRE PHOTOMETRIC TEST REPORT**

Test:U:230.36V I:0.0162A P:3.1285W PF:0.8382 Freq:49.99Hz		
UTHDi:0.00% ITHDi:0.00% KDisp:0 Lamp Flux:53.3838x1 lm		
Name: DL195-2.5-3W-P3	Type: 3W	Weight:
SPEC.: 5700K	DIM.:	Instrument No.: HUP-IES-B3
MFR.: EVERFINE	SUR.: 0.057*0.037	shielding angle:

DATA OF LAMP		PHOTOMETRIC DATA				Eff: 17.06 lm/W
MODEL	DL195-2.5-3W-P3	I <sub>max</sub> (cd)	33.69	S/MH (C0/180)	1.09	
NOMINAL POWER (W)	3	LOR (%)	100.0	S/MH (C90/270)	1.56	
RATED VOLTAGE (V)	230	TOTAL FLUX (lm)	53.384	η UP, DN (C0-180)	0.0, 24.9	
NOMINAL FLUX (lm)	53.3838	CIE CLASS	DIRECT	η UP, DN (C180-360)	0.0, 75.1	
LAMPS INSIDE	1	η up (%)	0.0	CIBSE SHR NOM	1.00	
TEST VOLTAGE (V)	230	η down (%)	100.0	CIBSE SHR MAX	1.00	



C Range: 0 - 360DEG  
 C Interval: 45.0DEG  
 Test Speed: HIGH  
 Temperature: 25.3 °C  
 Operators: Chen Songyu  
 Test Date: 2025-12-09

γ Range: 0 - 90DEG  
 γ Interval: 1.0DEG  
 Test System: EVERFINE GO-2000H\_V1 SYSTEM V2.00.456  
 Humidity: 65.0%  
 Test Distance: 9.520m [K=1.0000]  
 Remarks:

ZONAL FLUX DIAGRAM

ZONAL FLUX DIAGRAM:

$\gamma$	C0	C45	C90	C135	C180	C225	C270	C315	$\gamma$	$\Phi$ zone	$\Phi$ total	%lum,lamp
10	25.84	15.66	12.79	15.65	25.41	31.65	33.35	31.93	0- 10	2.387	2.387	4.47,4.47
20	22.93	8.563	5.924	8.560	21.93	29.97	32.79	31.54	10- 20	6.236	8.623	16.2,16.2
30	19.17	5.214	4.331	5.207	18.99	26.19	29.72	27.29	20- 30	8.522	17.14	32.1,32.1
40	15.62	3.862	3.123	3.861	15.48	22.61	26.06	22.99	30- 40	9.777	26.92	50.4,50.4
50	11.17	2.750	2.163	2.749	11.03	18.41	21.87	18.81	40- 50	9.776	36.70	68.7,68.7
60	7.402	1.812	1.370	1.811	7.260	13.43	13.85	13.72	50- 60	8.433	45.13	84.5,84.5
70	3.483	1.035	0.7647	1.032	3.468	6.537	6.169	6.641	60- 70	5.551	50.68	94.9,94.9
80	1.275	0.4473	0.3140	0.4409	1.296	1.344	0.9293	1.364	70- 80	2.250	52.93	99.2,99.2
90	0.0346	0.0347	0.0436	0.0433	0.0375	0.0260	0.0261	0.0289	80- 90	0.4514	53.38	100,100
100									90-100			
110									100-110			
120									110-120			
130									120-130			
140									130-140			
150									140-150			
160									150-160			
170									160-170			
180									170-180			
DEG	LUMINOUS INTENSITY:cd									UNIT:lm		

Conical surface Flux(90deg): 31.897 lm

%lum = 59.8%

%lamp = 59.8%

Conical surface Flux(120deg): 45.131 lm

%lum = 84.5%

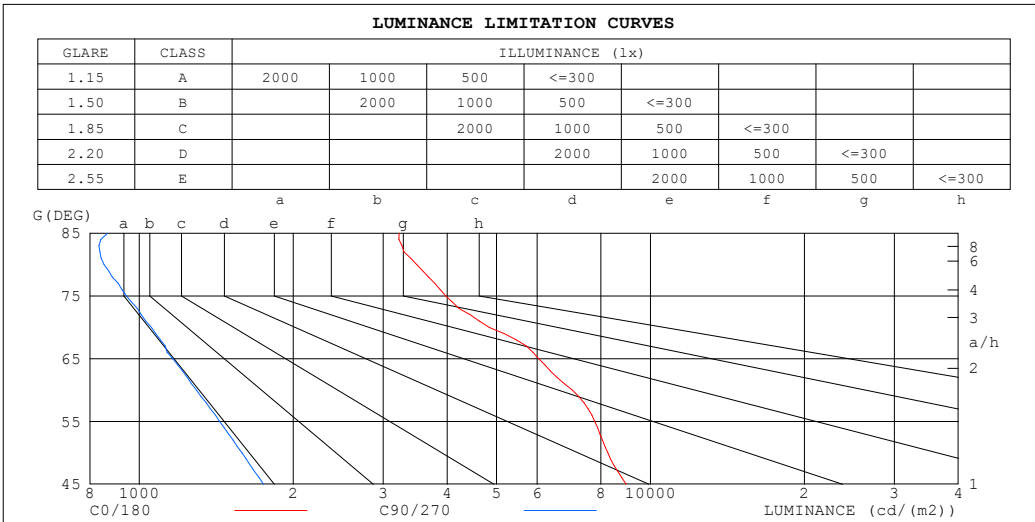
%lamp = 84.5%

C Range: 0 - 360DEG  
 C Interval: 45.0DEG  
 Test Speed: HIGH  
 Temperature:25.3°C  
 Operators:Chen Songyu  
 Test Date:2025-12-09

$\gamma$  Range: 0 - 90DEG  
 $\gamma$  Interval: 1.0DEG  
 Test System:EVERFINE GO-2000H\_V1 SYSTEM V2.00.456  
 Humidity:65.0%  
 Test Distance:9.520m [K=1.0000]  
 Remarks:

**LUMINANCE LIMITATION CURVES**

<b>Test:U:230.36V I:0.0162A P:3.1285W PF:0.8382 Freq:49.99Hz</b> <b>UTHDi:0.00% ITHDi:0.00% KDisp:0 Lamp Flux:53.3838x1 lm</b>		
<b>Name: DL195-2.5-3W-P3</b>	<b>Type: 3W</b>	<b>Weight:</b>
<b>SPEC.: 5700K</b>	<b>DIM.:</b>	<b>Instrument No.: HUP-IES-B3</b>
<b>MFR.: EVERFINE</b>	<b>SUR.: 0.057*0.037</b>	<b>shielding angle:</b>



LUMINANCE cd/(m2)		
G (DEG)	C0/180	C90/270
85	3226	867
80	3488	854
75	3981	944
70	4836	1056
65	6045	1163
60	7031	1293
55	7777	1436
50	8250	1588
45	8957	1748

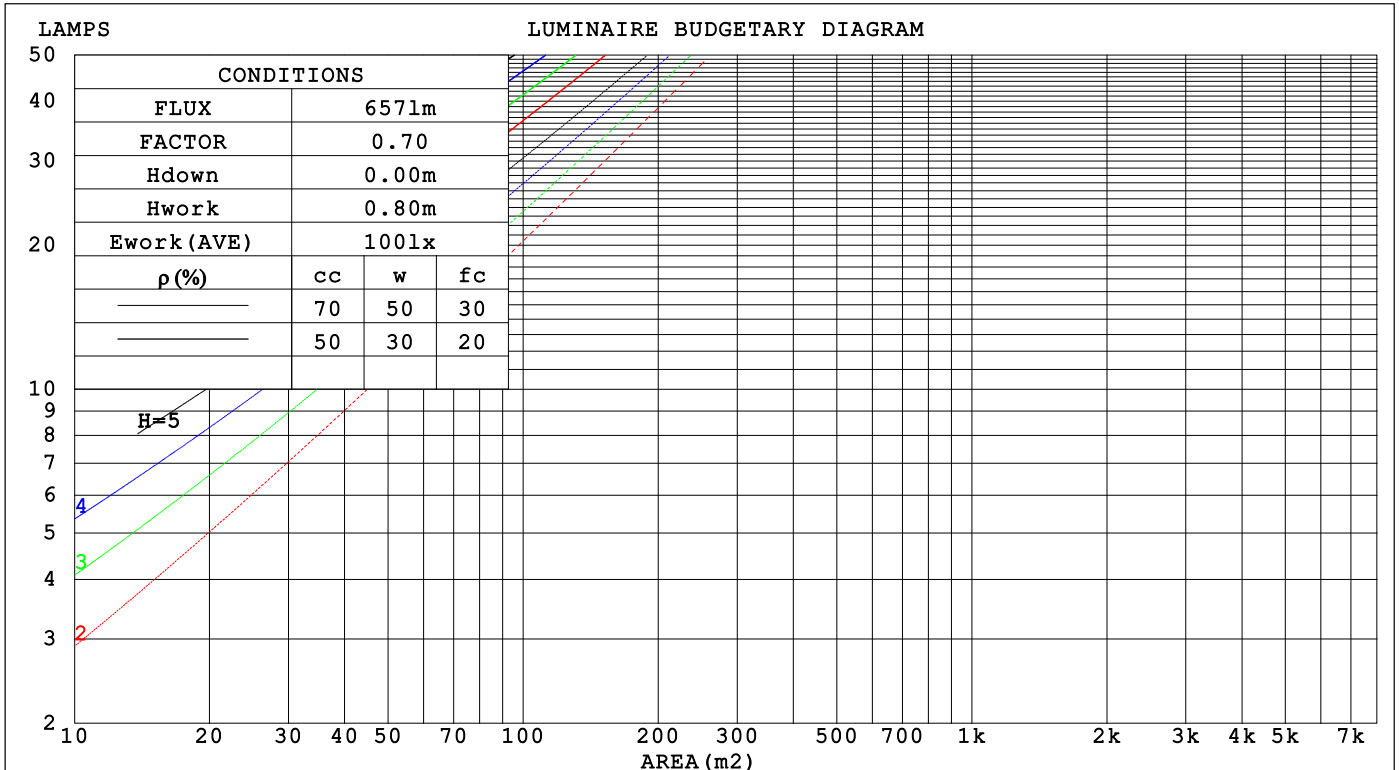
C Range: 0 - 360DEG  
 C Interval: 45.0DEG  
 Test Speed: HIGH  
 Temperature: 25.3 °C  
 Operators: Chen Songyu  
 Test Date: 2025-12-09

γ Range: 0 - 90DEG  
 γ Interval: 1.0DEG  
 Test System: EVERFINE GO-2000H\_V1 SYSTEM V2.00.456  
 Humidity: 65.0%  
 Test Distance: 9.520m [K=1.0000]  
 Remarks:

**CU AND LUMINAIRE BUDGETARY ESTIMATE DIAGRAM**

Test:U:230.36V I:0.0162A P:3.1285W PF:0.8382 Freq:49.99Hz		
UTHdi:0.00% ITHdi:0.00% KDisp:0 Lamp Flux:53.3838x1 lm		
Name: DL195-2.5-3W-P3	Type: 3W	Weight:
SPEC.: 5700K	DIM.:	Instrument No.: HUP-IES-B3
MFR.: EVERFINE	SUR.: 0.057*0.037	shielding angle:

pcc	80%			70%			50%			30%			10%			0
	50%	30%	10%	50%	30%	10%	50%	30%	10%	50%	30%	10%	50%	30%	10%	0
p <sub>w</sub>																0
p <sub>fc</sub>	20%			20%			20%			20%			20%			0
RCR	RCR:Room Cavity Ratio															
	Coefficients of Utilization(CU)															
0.0	1.19	1.19	1.19	1.16	1.16	1.16	1.11	1.11	1.11	1.06	1.06	1.06	1.02	1.02	1.02	1.00
1.0	1.06	1.02	.98	1.03	.90	.97	.99	.96	.94	.95	.93	.91	.92	.90	.88	.86
2.0	.93	.87	.82	.91	.85	.81	.88	.83	.79	.85	.81	.77	.82	.78	.75	.73
3.0	.83	.75	.69	.81	.74	.68	.78	.72	.67	.75	.70	.66	.73	.68	.65	.63
4.0	.74	.65	.59	.72	.65	.59	.70	.63	.58	.68	.62	.57	.65	.60	.56	.54
5.0	.66	.58	.51	.65	.57	.51	.63	.56	.50	.61	.55	.50	.59	.54	.49	.47
6.0	.60	.51	.45	.59	.51	.45	.57	.50	.45	.55	.49	.44	.54	.48	.44	.42
7.0	.54	.46	.40	.54	.46	.40	.52	.45	.40	.51	.44	.39	.49	.44	.39	.37
8.0	.50	.42	.36	.49	.41	.36	.48	.41	.36	.47	.40	.36	.46	.40	.35	.34
9.0	.46	.38	.33	.45	.38	.33	.44	.37	.32	.43	.37	.32	.42	.36	.32	.30
10.0	.43	.35	.30	.42	.35	.30	.41	.34	.30	.40	.34	.30	.39	.34	.29	.28



C Range: 0 - 360DEG  
 C Interval: 45.0DEG  
 Test Speed: HIGH  
 Temperature:25.3℃  
 Operators:Chen Songyu  
 Test Date:2025-12-09

γ Range: 0 - 90DEG  
 γ Interval: 1.0DEG  
 Test System:EVERFINE GO-2000H\_V1 SYSTEM V2.00.456  
 Humidity:65.0%  
 Test Distance:9.520m [K=1.0000]  
 Remarks:

**WEC AND CCEC**

Test:U:230.36V I:0.0162A P:3.1285W PF:0.8382 Freq:49.99Hz		
UTHDi:0.00% ITHDi:0.00% KDisp:0 Lamp Flux:53.3838x1 lm		
Name: DL195-2.5-3W-P3	Type: 3W	Weight:
SPEC.: 5700K	DIM.:	Instrument No.: HUP-IES-B3
MFR.: EVERFINE	SUR.: 0.057*0.037	shielding angle:

$\rho_{CC}$	80%			70%			50%			30%			10%			0
$\rho_w$	50%	30%	10%	50%	30%	10%	50%	30%	10%	50%	30%	10%	50%	30%	10%	0
$\rho_{fc}$	20%			20%			20%			20%			20%			0
RCR	RCR:Room Cavity Ratio						Wall Exitance Coefficients(WEC)									
0.0																
1.0	.277	.157	.050	.270	.154	.049	.257	.147	.047	.244	.141	.045	.233	.135	.044	
2.0	.266	.146	.045	.260	.143	.044	.249	.138	.043	.238	.133	.042	.228	.129	.041	
3.0	.250	.133	.040	.244	.131	.039	.234	.127	.039	.225	.123	.038	.216	.120	.037	
4.0	.233	.121	.036	.228	.119	.035	.219	.116	.035	.211	.113	.034	.203	.111	.034	
5.0	.217	.111	.032	.213	.109	.032	.205	.107	.031	.198	.104	.031	.191	.102	.031	
6.0	.203	.102	.029	.199	.101	.029	.192	.098	.029	.185	.096	.028	.179	.094	.028	
7.0	.190	.094	.027	.186	.093	.026	.180	.091	.026	.174	.089	.026	.169	.088	.026	
8.0	.178	.087	.024	.175	.086	.024	.169	.085	.024	.164	.083	.024	.159	.082	.024	
9.0	.167	.081	.023	.165	.080	.023	.160	.079	.022	.155	.078	.022	.150	.076	.022	
10.0	.158	.076	.021	.155	.075	.021	.151	.074	.021	.146	.073	.021	.142	.072	.021	

$\rho_{CC}$	80%			70%			50%			30%			10%			0
$\rho_w$	50%	30%	10%	50%	30%	10%	50%	30%	10%	50%	30%	10%	50%	30%	10%	0
$\rho_{fc}$	20%			20%			20%			20%			20%			0
RCR	RCR:Room Cavity Ratio						Ceiling Cavity Exitance Coefficients(CCEC)									
0.0	.190	.190	.190	.163	.163	.163	.111	.111	.111	.064	.064	.064	.020	.020	.020	
1.0	.178	.156	.137	.152	.134	.118	.104	.092	.082	.060	.053	.047	.019	.017	.015	
2.0	.169	.132	.101	.145	.114	.087	.099	.079	.061	.057	.046	.036	.018	.015	.012	
3.0	.161	.114	.077	.138	.098	.067	.095	.068	.047	.055	.040	.028	.018	.013	.009	
4.0	.153	.101	.061	.131	.087	.053	.090	.061	.037	.052	.035	.022	.017	.012	.007	
5.0	.146	.090	.049	.125	.078	.043	.086	.054	.030	.050	.032	.018	.016	.010	.006	
6.0	.139	.082	.041	.119	.071	.035	.082	.049	.025	.048	.029	.015	.015	.010	.005	
7.0	.132	.075	.034	.114	.065	.030	.078	.045	.021	.046	.027	.013	.015	.009	.004	
8.0	.126	.069	.030	.108	.060	.026	.075	.042	.018	.044	.025	.011	.014	.008	.004	
9.0	.120	.064	.026	.103	.055	.023	.072	.039	.016	.042	.023	.010	.013	.008	.003	
10.0	.114	.060	.023	.099	.052	.020	.068	.036	.014	.040	.022	.009	.013	.007	.003	

C Range: 0 - 360DEG  
 C Interval: 45.0DEG  
 Test Speed: HIGH  
 Temperature:25.3℃  
 Operators:Chen Songyu  
 Test Date:2025-12-09

$\gamma$  Range: 0 - 90DEG  
 $\gamma$  Interval: 1.0DEG  
 Test System:EVERFINE GO-2000H\_V1 SYSTEM V2.00.456  
 Humidity:65.0%  
 Test Distance:9.520m [K=1.0000]  
 Remarks:

**UGR(Unified Glare Rating) Table**

Test:U:230.36V I:0.0162A P:3.1285W PF:0.8382 Freq:49.99Hz UTHDi:0.00% ITHDi:0.00% KDisp:0 Lamp Flux:53.3838x1 lm		
Name: DL195-2.5-3W-P3	Type: 3W	Weight:
SPEC.: 5700K	DIM.:	Instrument No.: HUP-IES-B3
MFR.: EVERFINE	SUR.: 0.057*0.037	shielding angle:

ceiling/cavity	0.7	0.7	0.5	0.5	0.3	0.7	0.7	0.5	0.5	0.3
walls	0.5	0.3	0.5	0.3	0.3	0.5	0.3	0.5	0.3	0.3
working plane	0.2	0.2	0.2	0.2	0.2	0.2	0.2	0.2	0.2	0.2

Room dimensions	Viewed crosswise					Viewed endwise				
x = 2H y = 2H	17.4	18.9	17.7	19.1	19.3	9.2	10.7	9.5	10.9	11.1
3H	18.7	20.0	19.0	20.3	20.5	10.2	11.5	10.5	11.8	12.0
4H	19.1	20.4	19.4	20.6	20.9	10.6	11.8	10.9	12.1	12.3
6H	19.4	20.6	19.7	20.8	21.1	10.8	12.0	11.2	12.3	12.6
8H	19.5	20.6	19.8	20.9	21.2	10.9	12.1	11.3	12.3	12.6
12H	19.6	20.7	19.9	20.9	21.2	11.0	12.1	11.3	12.4	12.7
4H 2H	17.3	18.5	17.6	18.8	19.0	10.5	11.7	10.8	12.0	12.2
3H	18.7	19.8	19.0	20.1	20.4	11.5	12.6	11.8	12.9	13.1
4H	19.2	20.2	19.6	20.5	20.8	11.9	12.9	12.3	13.2	13.5
6H	19.6	20.5	20.0	20.9	21.2	12.3	13.1	12.6	13.5	13.8
8H	19.8	20.6	20.2	21.0	21.4	12.4	13.2	12.8	13.6	13.9
12H	20.0	20.7	20.4	21.1	21.5	12.5	13.2	12.9	13.6	14.0
8H 4H	19.1	20.0	19.6	20.3	20.7	12.4	13.2	12.8	13.6	14.0
6H	19.7	20.3	20.1	20.7	21.2	12.9	13.6	13.3	14.0	14.4
8H	19.9	20.5	20.4	20.9	21.4	13.1	13.7	13.5	14.1	14.5
12H	20.1	20.6	20.6	21.1	21.5	13.2	13.7	13.7	14.2	14.7
12H 4H	19.1	19.9	19.5	20.2	20.6	12.5	13.3	12.9	13.7	14.1
6H	19.6	20.2	20.1	20.7	21.1	13.0	13.6	13.5	14.0	14.5
8H	19.9	20.4	20.4	20.8	21.3	13.3	13.8	13.7	14.2	14.7

Variations with the observer position at spacings(CIE Pub.117):		
S = 1.0H	+ 0.5 / - 0.2	+ 0.4 / - 0.5
1.5H	+ 1.1 / - 1.1	+ 0.2 / - 0.4
2.0H	+ 1.9 / - 2.4	+ 0.4 / - 0.8

CIE Pub.117, 53.38 lm Total Lamp Luminous Flux Corrected (8log(F/F0) = -10.2)  
Area: 0.002109 m2

C Range: 0 - 360DEG	γ Range: 0 - 90DEG
C Interval: 45.0DEG	γ Interval: 1.0DEG
Test Speed: HIGH	Test System:EVERFINE GO-2000H_V1 SYSTEM V2.00.456
Temperature:25.3℃	Humidity:65.0%
Operators:Chen Songyu	Test Distance:9.520m [K=1.0000]
Test Date:2025-12-09	Remarks:

**UTILIZATION FACTORS TABLE**

Test:U:230.36V I:0.0162A P:3.1285W PF:0.8382 Freq:49.99Hz UTHDi:0.00% ITHDi:0.00% KDisp:0 Lamp Flux:53.3838x1 lm		
Name: DL195-2.5-3W-P3	Type: 3W	Weight:
SPEC.: 5700K	DIM.:	Instrument No.: HUP-IES-B3
MFR.: EVERFINE	SUR.: 0.057*0.037	shielding angle:

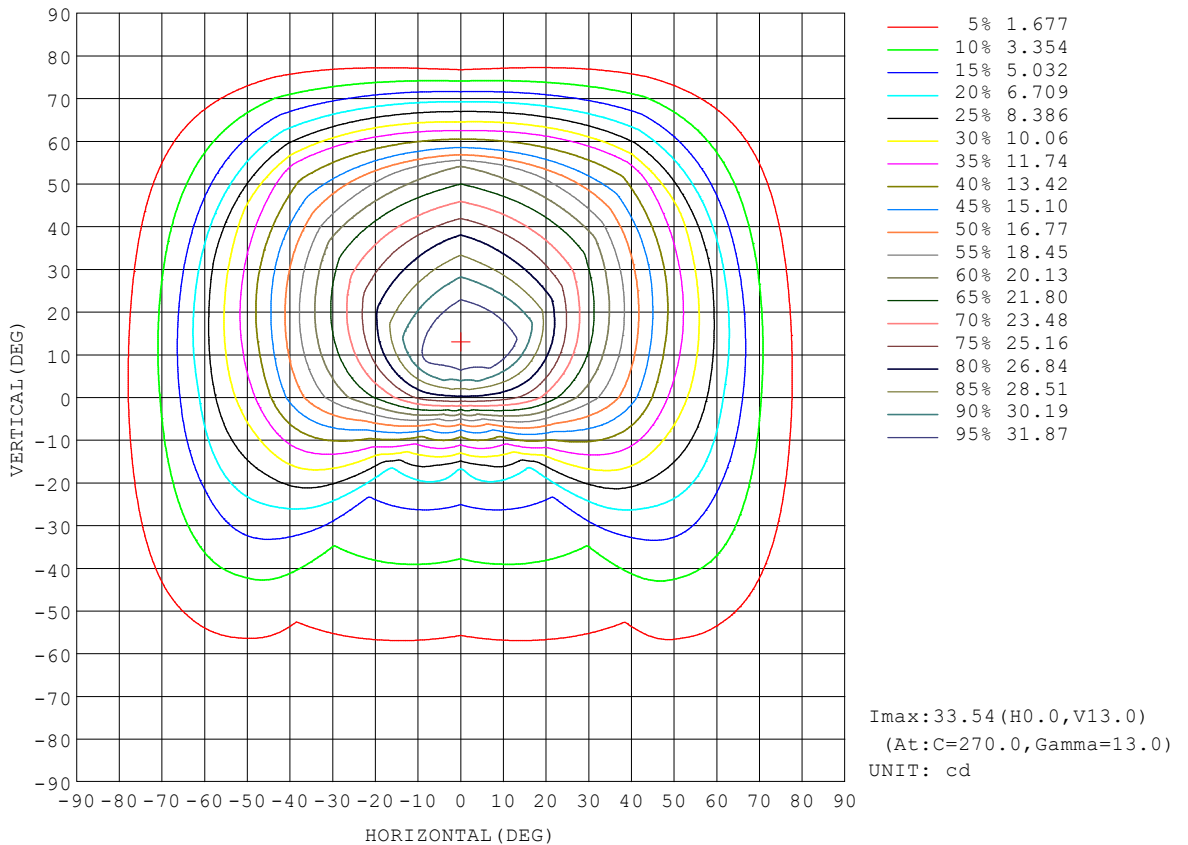
REFLECTANCE										
Ceiling	0.8	0.8	0.8	0.7	0.7	0.7	0.5	0.5	0.5	0
Walls	0.7	0.5	0.3	0.7	0.5	0.3	0.7	0.5	0.3	0
Working plane	0.2	0.2	0.2	0.2	0.2	0.2	0.2	0.2	0.2	0
ROOM INDEX	UTILIZATION FACTORS (PERCENT) $k(RI) \times RCR = 5$									
k = 0.60	61	50	43	60	49	43	59	49	43	37
0.80	71	60	53	70	59	53	68	59	52	46
1.00	79	69	62	78	68	62	76	70	61	55
1.25	86	77	70	85	76	70	82	74	69	62
1.50	91	82	76	89	81	75	87	79	74	67
2.00	98	90	84	96	89	83	92	86	82	74
2.50	101	94	89	99	93	88	95	90	86	78
3.00	104	98	93	102	96	92	98	94	90	82
4.00	108	103	99	105	101	97	101	98	94	86
5.00	110	106	102	108	104	100	103	100	97	89
ROOM INDEX	UF(total)									Direct
According to DIN EN 13032-2 2004			Suspended				SHRNOM = 1.25			

C Range: 0 - 360DEG  
 C Interval: 45.0DEG  
 Test Speed: HIGH  
 Temperature:25.3°C  
 Operators:Chen Songyu  
 Test Date:2025-12-09

γ Range: 0 - 90DEG  
 γ Interval: 1.0DEG  
 Test System:EVERFINE GO-2000H\_V1 SYSTEM V2.00.456  
 Humidity:65.0%  
 Test Distance:9.520m [K=1.0000]  
 Remarks:

**ISOCANDELA DIAGRAM**

Test:U:230.36V I:0.0162A P:3.1285W PF:0.8382 Freq:49.99Hz UTHDi:0.00% ITHDi:0.00% KDisp:0 Lamp Flux:53.3838x1 lm		
Name: DL195-2.5-3W-P3	Type: 3W	Weight:
SPEC.: 5700K	DIM.:	Instrument No.: HUP-IES-B3
MFR.: EVERFINE	SUR.: 0.057*0.037	shielding angle:

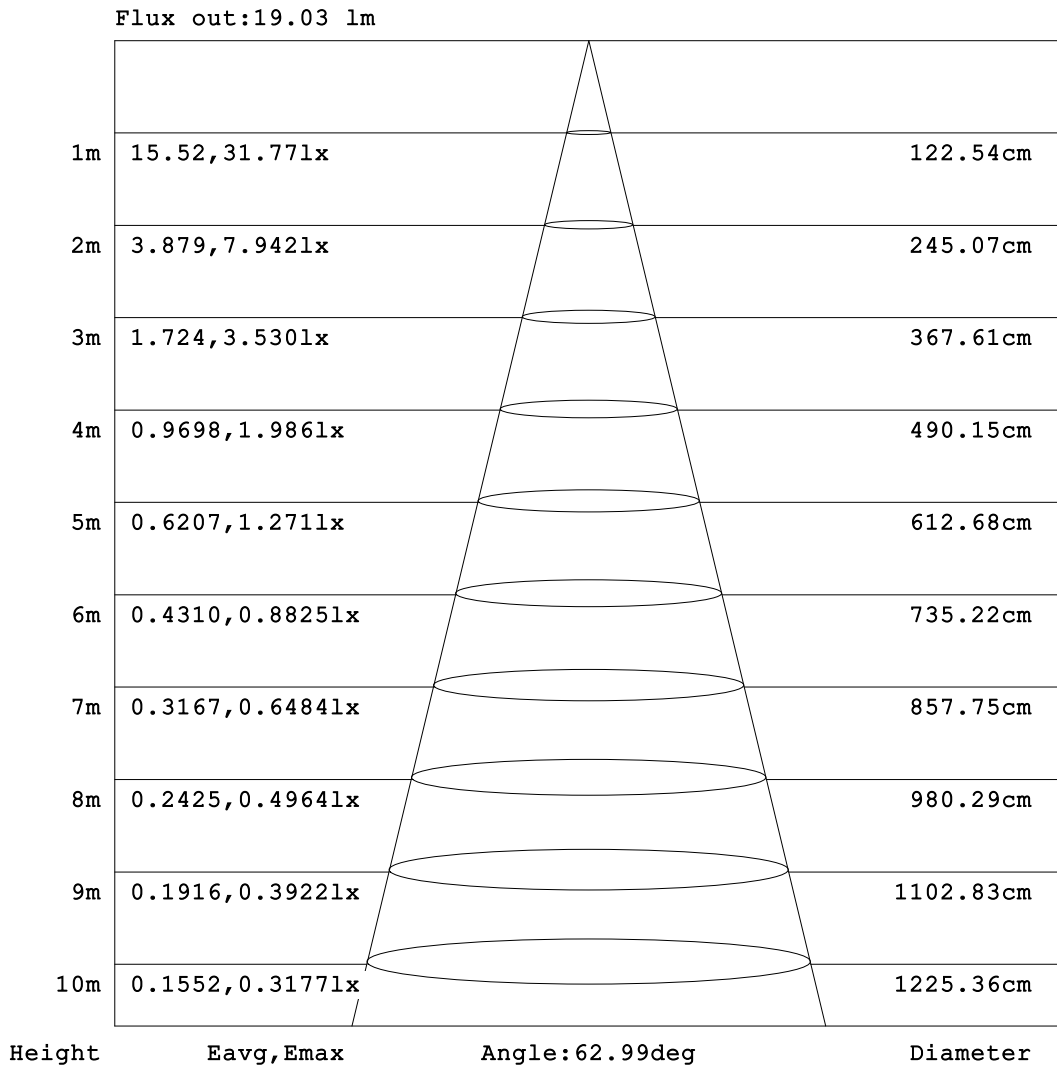


C Range: 0 - 360DEG  
 C Interval: 45.0DEG  
 Test Speed: HIGH  
 Temperature:25.3℃  
 Operators:Chen Songyu  
 Test Date:2025-12-09

γ Range: 0 - 90DEG  
 γ Interval: 1.0DEG  
 Test System:EVERFINE GO-2000H\_V1 SYSTEM V2.00.456  
 Humidity:65.0%  
 Test Distance:9.520m [K=1.0000]  
 Remarks:

**AAI Figure**

Test:U:230.36V I:0.0162A P:3.1285W PF:0.8382 Freq:49.99Hz UTHDi:0.00% ITHDi:0.00% KDisp:0 Lamp Flux:53.3838x1 lm		
Name: DL195-2.5-3W-P3	Type: 3W	Weight:
SPEC.: 5700K	DIM.:	Instrument No.: HUP-IES-B3
MFR.: EVERFINE	SUR.: 0.057*0.037	shielding angle:



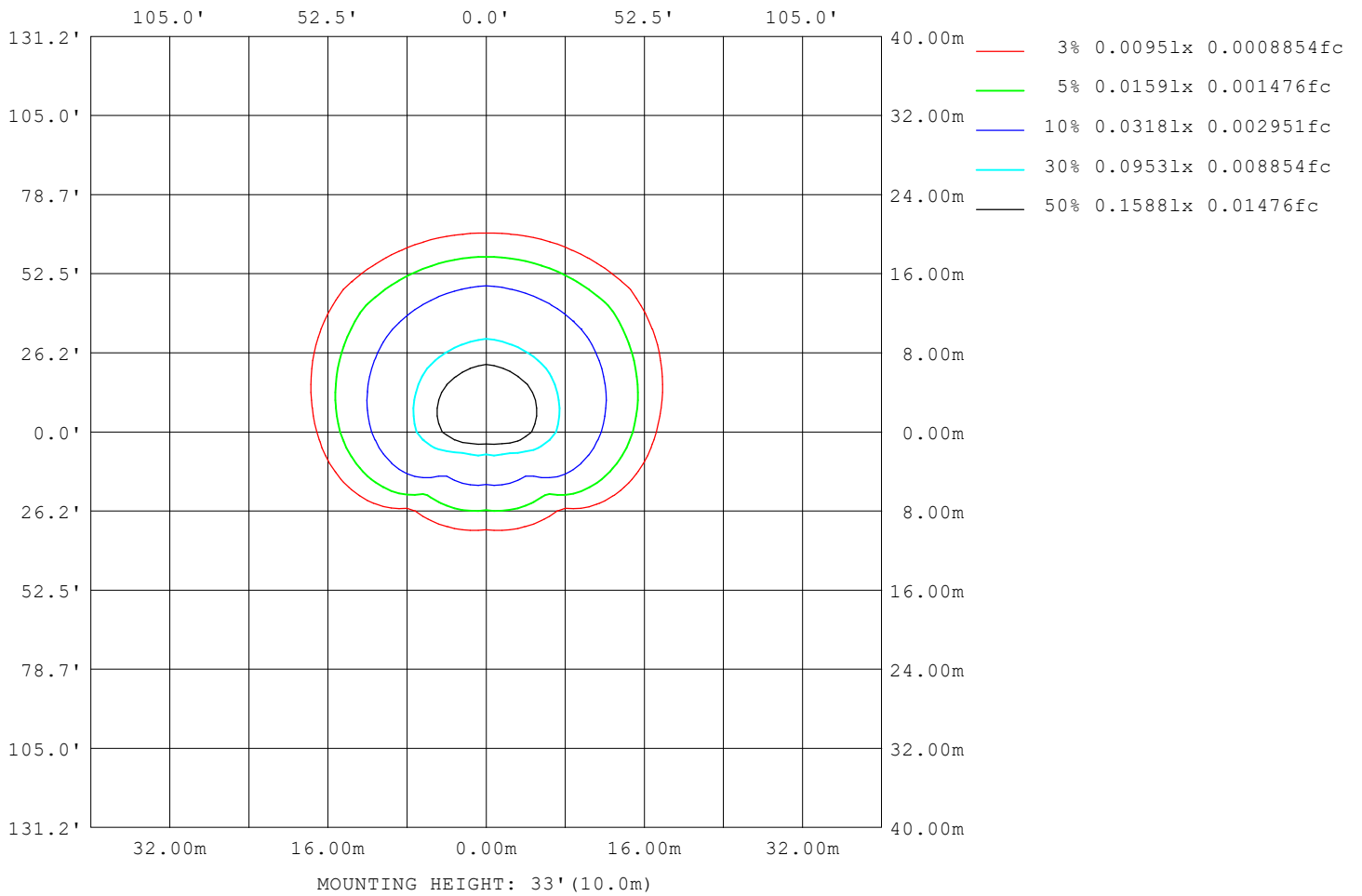
Note: The Curves indicate the illuminated area and the average illumination when the luminaire is at different distance.

C Range: 0 - 360DEG  
C Interval: 45.0DEG  
Test Speed: HIGH  
Temperature: 25.3 °C  
Operators: Chen Songyu  
Test Date: 2025-12-09

γ Range: 0 - 90DEG  
γ Interval: 1.0DEG  
Test System: EVERFINE GO-2000H\_V1 SYSTEM V2.00.456  
Humidity: 65.0%  
Test Distance: 9.520m [K=1.0000]  
Remarks:

**ISOLUX DIAGRAM**

Test:U:230.36V I:0.0162A P:3.1285W PF:0.8382 Freq:49.99Hz UTHDi:0.00% ITHDi:0.00% KDisp:0 Lamp Flux:53.3838x1 lm		
Name: DL195-2.5-3W-P3	Type: 3W	Weight:
SPEC.: 5700K	DIM.:	Instrument No.: HUP-IES-B3
MFR.: EVERFINE	SUR.: 0.057*0.037	shielding angle:



C Range: 0 - 360DEG  
 C Interval: 45.0DEG  
 Test Speed: HIGH  
 Temperature:25.3°C  
 Operators:Chen Songyu  
 Test Date:2025-12-09

γ Range: 0 - 90DEG  
 γ Interval: 1.0DEG  
 Test System:EVERFINE GO-2000H\_V1 SYSTEM V2.00.456  
 Humidity:65.0%  
 Test Distance:9.520m [K=1.0000]  
 Remarks:

**LED Avg.L Report**

Test:U:230.36V I:0.0162A P:3.1285W PF:0.8382 Freq:49.99Hz UTHDi:0.00% ITHDi:0.00% KDisp:0 Lamp Flux:53.3838x1 lm		
Name: DL195-2.5-3W-P3	Type: 3W	Weight:
SPEC.: 5700K	DIM.:	Instrument No.: HUP-IES-B3
MFR.: EVERFINE	SUR.: 0.057*0.037	shielding angle:

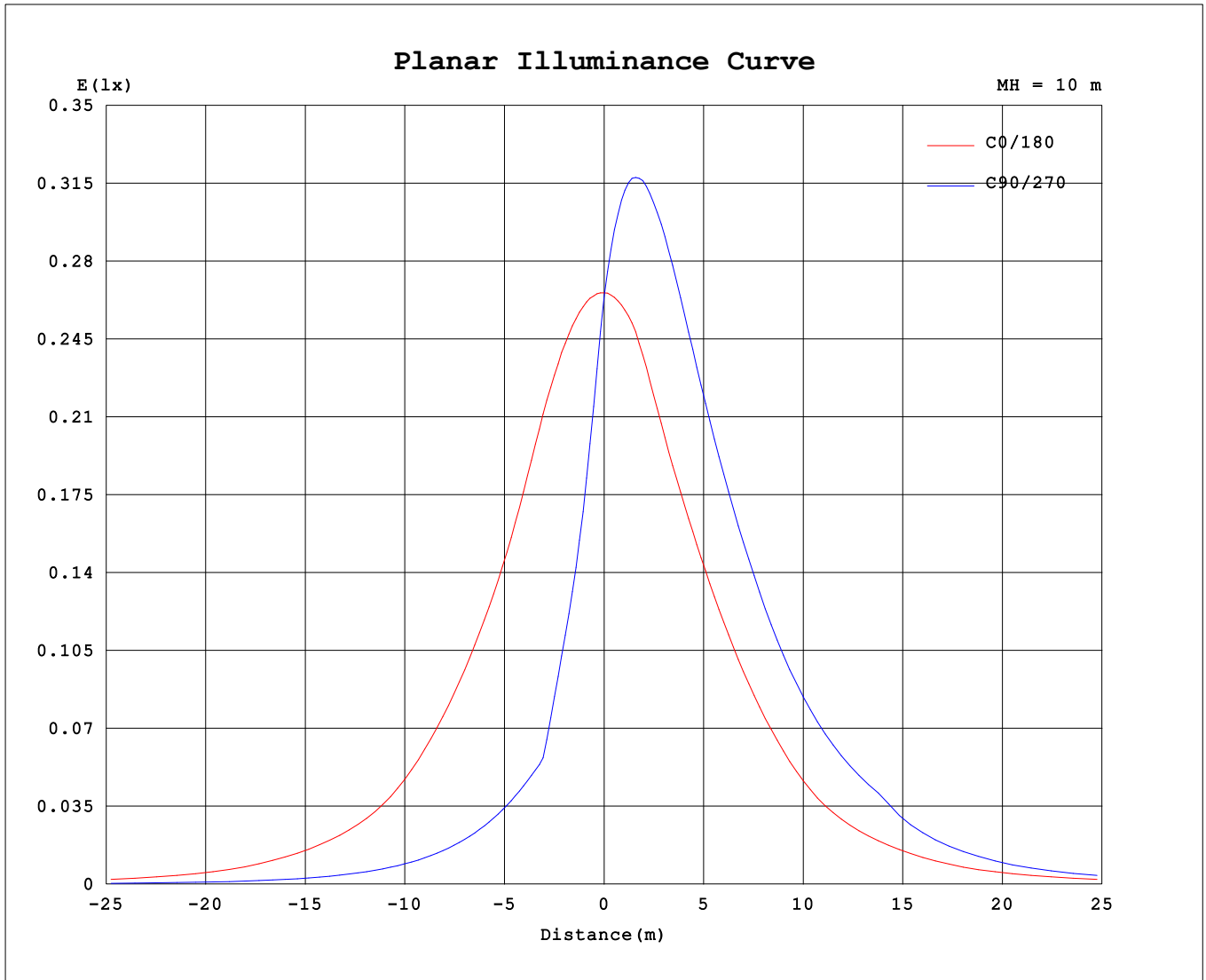
AvgL	cd/m2
L_0~180 (65) av	5990
L_0~180 (75) av	4037
L_0~180 (85) av	3195
L_90~270 (65) av	6066
L_90~270 (75) av	2992
L_90~270 (85) av	1540
L_45 (65) av	6521
L_45 (75) av	4082
L_45 (85) av	1948

Standard: GB/T 29293-2012

C Range: 0 - 360DEG  
 C Interval: 45.0DEG  
 Test Speed: HIGH  
 Temperature:25.3℃  
 Operators:Chen Songyu  
 Test Date:2025-12-09

γ Range: 0 - 90DEG  
 γ Interval: 1.0DEG  
 Test System:EVERFINE GO-2000H\_V1 SYSTEM V2.00.456  
 Humidity:65.0%  
 Test Distance:9.520m [K=1.0000]  
 Remarks:

**Planar Illuminance Curve**



C Range: 0 - 360DEG  
 C Interval: 45.0DEG  
 Test Speed: HIGH  
 Temperature: 25.3 °C  
 Operators: Chen Songyu  
 Test Date: 2025-12-09

γ Range: 0 - 90DEG  
 γ Interval: 1.0DEG  
 Test System: EVERFINE GO-2000H\_V1 SYSTEM V2.00.456  
 Humidity: 65.0%  
 Test Distance: 9.520m [K=1.0000]  
 Remarks:

