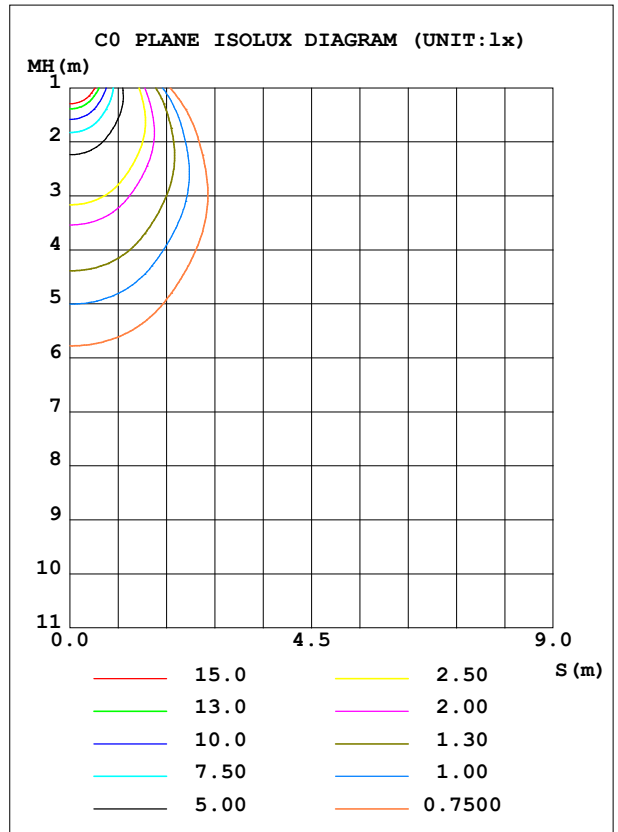
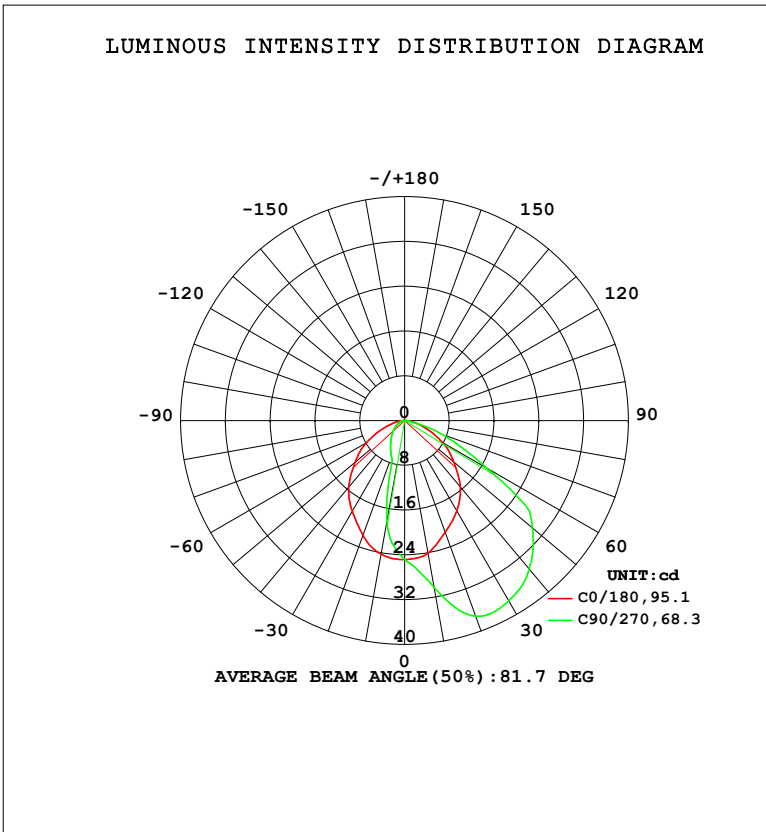


LUMINAIRE PHOTOMETRIC TEST REPORT

Test:U:230.36V I:0.0162A P:3.1314W PF:0.8371 Freq:49.99Hz		
UTHDi:0.00% ITHDi:0.00% KDisp:0 Lamp Flux:61.3231x1 lm		
Name: DL195-2.5-3W-P3	Type: 3W	Weight:
SPEC.: 3000K	DIM.:	Instrument No.: HUP-IES-B3
MFR.: EVERFINE	SUR.: 0.057*0.037	shielding angle:

DATA OF LAMP		PHOTOMETRIC DATA			
MODEL	DL195-2.5-3W-P3	Imax (cd)	37.76	S/MH (C0/180)	1.14
NOMINAL POWER (W)	3	LOR (%)	100.0	S/MH (C90/270)	1.87
RATED VOLTAGE (V)	230	TOTAL FLUX (lm)	61.323	$\eta$ UP, DN (C0-180)	0.0, 24.0
NOMINAL FLUX (lm)	61.3231	CIE CLASS	DIRECT	$\eta$ UP, DN (C180-360)	0.0, 76.0
LAMPS INSIDE	1	$\eta$ up (%)	0.0	CIBSE SHR NOM	1.00
TEST VOLTAGE (V)	230	$\eta$ down (%)	100.0	CIBSE SHR MAX	1.15



C Range: 0 - 360DEG  
 C Interval: 45.0DEG  
 Test Speed: HIGH  
 Temperature: 25.3 °C  
 Operators: Chen Songyu  
 Test Date: 2025-12-09

$\gamma$  Range: 0 - 90DEG  
 $\gamma$  Interval: 1.0DEG  
 Test System: EVERFINE GO-2000H\_V1 SYSTEM V2.00.456  
 Humidity: 65.0%  
 Test Distance: 9.520m [K=1.0000]  
 Remarks:

ZONAL FLUX DIAGRAM

ZONAL FLUX DIAGRAM:

$\gamma$	C0	C45	C90	C135	C180	C225	C270	C315	$\gamma$	$\Phi$ zone	$\Phi$ total	%lum, lamp
10	24.24	20.88	18.36	20.88	24.06	27.54	30.18	27.78	0- 10	2.340	2.340	3.82,3.82
20	21.79	11.16	6.907	11.14	21.24	30.69	37.18	32.19	10- 20	6.474	8.815	14.4,14.4
30	18.71	6.113	5.055	6.124	18.67	30.42	37.17	31.84	20- 30	9.352	18.17	29.6,29.6
40	15.56	4.524	3.647	4.532	15.50	27.77	34.64	28.33	30- 40	11.33	29.50	48.1,48.1
50	11.54	3.221	2.523	3.231	11.48	23.34	29.83	23.95	40- 50	11.80	41.30	67.3,67.3
60	7.849	2.124	1.602	2.129	7.802	16.88	16.95	17.39	50- 60	10.34	51.63	84.2,84.2
70	3.924	1.217	0.8915	1.221	3.959	7.584	6.922	7.755	60- 70	6.565	58.20	94.9,94.9
80	1.479	0.5246	0.3687	0.5234	1.516	1.581	1.113	1.599	70- 80	2.592	60.79	99.1,99.1
90	0.0373	0.0346	0.0493	0.0494	0.0404	0.0260	0.0261	0.0320	80- 90	0.5307	61.32	100,100
100									90-100			
110									100-110			
120									110-120			
130									120-130			
140									130-140			
150									140-150			
160									150-160			
170									160-170			
180									170-180			
DEG	LUMINOUS INTENSITY:cd									UNIT:lm		

Conical surface Flux(90deg): 35.448 lm

%lum = 57.8%

%lamp = 57.8%

Conical surface Flux(120deg): 51.635 lm

%lum = 84.2%

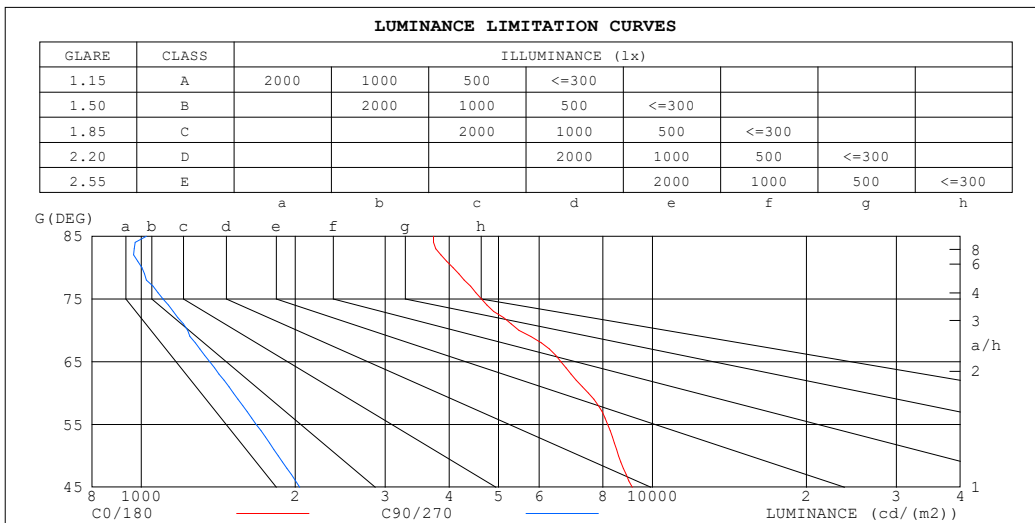
%lamp = 84.2%

C Range: 0 - 360DEG  
 C Interval: 45.0DEG  
 Test Speed: HIGH  
 Temperature:25.3°C  
 Operators:Chen Songyu  
 Test Date:2025-12-09

$\gamma$  Range: 0 - 90DEG  
 $\gamma$  Interval: 1.0DEG  
 Test System:EVERFINE GO-2000H\_V1 SYSTEM V2.00.456  
 Humidity:65.0%  
 Test Distance:9.520m [K=1.0000]  
 Remarks:

**LUMINANCE LIMITATION CURVES**

<b>Test:U:230.36V I:0.0162A P:3.1314W PF:0.8371 Freq:49.99Hz</b> <b>UTHDi:0.00% ITHDi:0.00% KDisp:0 Lamp Flux:61.3231x1 lm</b>		
<b>Name: DL195-2.5-3W-P3</b>	<b>Type: 3W</b>	<b>Weight:</b>
<b>SPEC.: 3000K</b>	<b>DIM.:</b>	<b>Instrument No.: HUP-IES-B3</b>
<b>MFR.: EVERFINE</b>	<b>SUR.: 0.057*0.037</b>	<b>shielding angle:</b>



LUMINANCE cd/(m2)		
G (DEG)	C0/180	C90/270
85	3731	1024
80	4069	1003
75	4631	1102
70	5480	1232
65	6619	1361
60	7499	1514
55	8167	1678
50	8577	1854
45	9128	2042

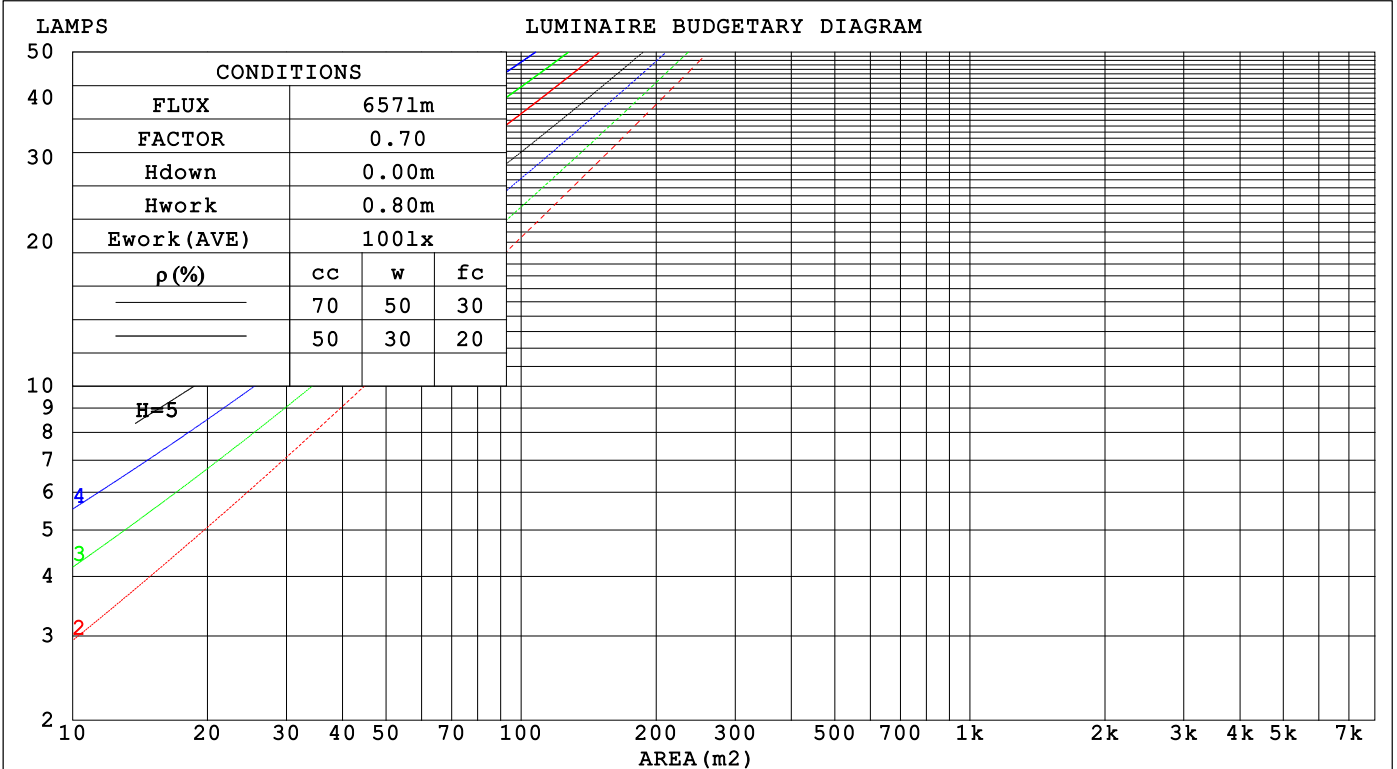
C Range: 0 - 360DEG  
 C Interval: 45.0DEG  
 Test Speed: HIGH  
 Temperature: 25.3 °C  
 Operators: Chen Songyu  
 Test Date: 2025-12-09

γ Range: 0 - 90DEG  
 γ Interval: 1.0DEG  
 Test System: EVERFINE GO-2000H\_V1 SYSTEM V2.00.456  
 Humidity: 65.0%  
 Test Distance: 9.520m [K=1.0000]  
 Remarks:

**CU AND LUMINAIRE BUDGETARY ESTIMATE DIAGRAM**

Test:U:230.36V I:0.0162A P:3.1314W PF:0.8371 Freq:49.99Hz		
UTHdi:0.00% ITHdi:0.00% KDisp:0 Lamp Flux:61.3231x1 lm		
Name: DL195-2.5-3W-P3	Type: 3W	Weight:
SPEC.: 3000K	DIM.:	Instrument No.: HUP-IES-B3
MFR.: EVERFINE	SUR.: 0.057*0.037	shielding angle:

pcc	80%			70%			50%			30%			10%			0
	50%	30%	10%	50%	30%	10%	50%	30%	10%	50%	30%	10%	50%	30%	10%	0
pw																
pfc	20%			20%			20%			20%			20%			0
RCR	RCR:Room Cavity Ratio Coefficients of Utilization(CU)															
0.0	1.19	1.19	1.19	1.16	1.16	1.16	1.11	1.11	1.11	1.06	1.06	1.06	1.02	1.02	1.02	1.00
1.0	1.05	1.01	.98	1.03	.90	.96	.99	.96	.93	.95	.93	.90	.91	.90	.88	.86
2.0	.93	.86	.81	.91	.85	.80	.87	.82	.78	.84	.80	.76	.81	.78	.75	.73
3.0	.82	.74	.68	.80	.73	.67	.77	.71	.66	.75	.69	.65	.72	.68	.64	.62
4.0	.73	.64	.58	.71	.64	.57	.69	.62	.57	.67	.61	.56	.64	.59	.55	.53
5.0	.65	.56	.50	.64	.56	.50	.62	.55	.49	.60	.54	.49	.58	.53	.48	.46
6.0	.59	.50	.44	.58	.50	.44	.56	.49	.43	.54	.48	.43	.53	.47	.42	.40
7.0	.53	.45	.39	.52	.44	.39	.51	.44	.38	.50	.43	.38	.48	.42	.38	.36
8.0	.49	.40	.35	.48	.40	.35	.47	.39	.34	.45	.39	.34	.44	.38	.34	.32
9.0	.45	.37	.31	.44	.36	.31	.43	.36	.31	.42	.35	.31	.41	.35	.31	.29
10.0	.41	.33	.28	.41	.33	.28	.40	.33	.28	.39	.32	.28	.38	.32	.28	.26



C Range: 0 - 360DEG  
 C Interval: 45.0DEG  
 Test Speed: HIGH  
 Temperature:25.3°C  
 Operators:Chen Songyu  
 Test Date:2025-12-09

γ Range: 0 - 90DEG  
 γ Interval: 1.0DEG  
 Test System:EVERFINE GO-2000H\_V1 SYSTEM V2.00.456  
 Humidity:65.0%  
 Test Distance:9.520m [K=1.0000]  
 Remarks:

**WEC AND CCEC**

Test:U:230.36V I:0.0162A P:3.1314W PF:0.8371 Freq:49.99Hz		
UTHDi:0.00% ITHDi:0.00% KDisp:0 Lamp Flux:61.3231x1 lm		
Name: DL195-2.5-3W-P3	Type: 3W	Weight:
SPEC.: 3000K	DIM.:	Instrument No.: HUP-IES-B3
MFR.: EVERFINE	SUR.: 0.057*0.037	shielding angle:

$\rho_{cc}$	80%			70%			50%			30%			10%			0
$\rho_w$	50%	30%	10%	50%	30%	10%	50%	30%	10%	50%	30%	10%	50%	30%	10%	0
$\rho_{fc}$	20%			20%			20%			20%			20%			0
RCR	RCR:Room Cavity Ratio						Wall Exitance Coefficients(WEC)									
0.0																
1.0	.281	.160	.051	.274	.156	.050	.261	.150	.048	.249	.144	.046	.238	.138	.044	
2.0	.271	.148	.046	.265	.146	.045	.253	.141	.044	.242	.136	.043	.233	.132	.041	
3.0	.254	.135	.041	.249	.133	.040	.239	.129	.039	.229	.126	.039	.221	.122	.038	
4.0	.237	.123	.036	.233	.122	.036	.224	.119	.035	.215	.116	.035	.207	.113	.034	
5.0	.221	.113	.033	.217	.111	.032	.209	.109	.032	.202	.106	.032	.195	.104	.031	
6.0	.206	.103	.030	.203	.102	.029	.195	.100	.029	.189	.098	.029	.183	.096	.029	
7.0	.193	.095	.027	.190	.094	.027	.183	.093	.027	.177	.091	.026	.172	.089	.026	
8.0	.181	.088	.025	.178	.088	.025	.172	.086	.025	.167	.085	.024	.162	.083	.024	
9.0	.170	.082	.023	.167	.082	.023	.162	.080	.023	.157	.079	.023	.153	.078	.022	
10.0	.160	.077	.021	.158	.076	.021	.153	.075	.021	.149	.074	.021	.145	.073	.021	

$\rho_{cc}$	80%			70%			50%			30%			10%			0
$\rho_w$	50%	30%	10%	50%	30%	10%	50%	30%	10%	50%	30%	10%	50%	30%	10%	0
$\rho_{fc}$	20%			20%			20%			20%			20%			0
RCR	RCR:Room Cavity Ratio						Ceiling Cavity Exitance Coefficients(CCEC)									
0.0																
1.0	.190	.190	.190	.163	.163	.163	.111	.111	.111	.064	.064	.064	.020	.020	.020	
2.0	.178	.156	.137	.153	.134	.118	.104	.092	.081	.060	.053	.047	.019	.017	.015	
3.0	.169	.132	.101	.145	.114	.087	.099	.079	.061	.057	.046	.036	.018	.015	.012	
4.0	.161	.114	.077	.138	.099	.066	.095	.068	.047	.055	.040	.027	.018	.013	.009	
5.0	.154	.101	.060	.132	.087	.052	.091	.061	.037	.053	.036	.022	.017	.012	.007	
6.0	.147	.090	.049	.126	.078	.042	.087	.055	.030	.050	.032	.018	.016	.010	.006	
7.0	.140	.082	.040	.120	.071	.035	.083	.050	.025	.048	.029	.015	.016	.010	.005	
8.0	.133	.075	.034	.115	.065	.030	.079	.046	.021	.046	.027	.012	.015	.009	.004	
9.0	.127	.069	.029	.109	.060	.026	.076	.042	.018	.044	.025	.011	.014	.008	.004	
10.0	.121	.064	.026	.104	.056	.022	.072	.039	.016	.042	.023	.009	.014	.008	.003	
10.0	.116	.060	.023	.100	.052	.020	.069	.037	.014	.040	.022	.008	.013	.007	.003	

C Range: 0 - 360DEG  
 C Interval: 45.0DEG  
 Test Speed: HIGH  
 Temperature:25.3℃  
 Operators:Chen Songyu  
 Test Date:2025-12-09

$\gamma$  Range: 0 - 90DEG  
 $\gamma$  Interval: 1.0DEG  
 Test System:EVERFINE GO-2000H\_V1 SYSTEM V2.00.456  
 Humidity:65.0%  
 Test Distance:9.520m [K=1.0000]  
 Remarks:

**UGR(Unified Glare Rating) Table**

Test:U:230.36V I:0.0162A P:3.1314W PF:0.8371 Freq:49.99Hz UTHDi:0.00% ITHDi:0.00% KDisp:0 Lamp Flux:61.3231x1 lm		
Name: DL195-2.5-3W-P3	Type: 3W	Weight:
SPEC.: 3000K	DIM.:	Instrument No.: HUP-IES-B3
MFR.: EVERFINE	SUR.: 0.057*0.037	shielding angle:

ceiling/cavity	0.7	0.7	0.5	0.5	0.3	0.7	0.7	0.5	0.5	0.3
walls	0.5	0.3	0.5	0.3	0.3	0.5	0.3	0.5	0.3	0.3
working plane	0.2	0.2	0.2	0.2	0.2	0.2	0.2	0.2	0.2	0.2

Room dimensions	Viewed crosswise					Viewed endwise				
x = 2H y = 2H	17.4	18.9	17.7	19.1	19.3	9.8	11.3	10.1	11.5	11.7
3H	18.8	20.1	19.1	20.3	20.6	10.8	12.1	11.1	12.4	12.6
4H	19.2	20.5	19.5	20.8	21.0	11.2	12.4	11.5	12.7	12.9
6H	19.6	20.8	19.9	21.1	21.3	11.4	12.6	11.8	12.9	13.2
8H	19.7	20.9	20.0	21.1	21.4	11.5	12.7	11.9	13.0	13.2
12H	19.8	20.9	20.1	21.2	21.5	11.6	12.7	11.9	13.0	13.3
4H 2H	17.3	18.5	17.6	18.8	19.0	11.0	12.3	11.3	12.5	12.8
3H	18.8	19.9	19.1	20.2	20.5	12.0	13.1	12.4	13.4	13.7
4H	19.4	20.4	19.8	20.7	21.0	12.5	13.5	12.8	13.8	14.1
6H	19.9	20.8	20.3	21.1	21.5	12.8	13.7	13.2	14.1	14.4
8H	20.1	20.9	20.5	21.3	21.7	12.9	13.8	13.3	14.1	14.5
12H	20.2	21.0	20.7	21.4	21.8	13.0	13.8	13.5	14.2	14.6
8H 4H	19.3	20.2	19.7	20.5	20.9	13.0	13.8	13.4	14.2	14.6
6H	19.9	20.6	20.4	21.0	21.4	13.5	14.1	13.9	14.5	15.0
8H	20.2	20.8	20.6	21.2	21.7	13.6	14.2	14.1	14.7	15.1
12H	20.4	20.9	20.9	21.4	21.8	13.8	14.3	14.3	14.8	15.2
12H 4H	19.3	20.1	19.7	20.4	20.8	13.1	13.8	13.5	14.2	14.6
6H	19.9	20.5	20.4	20.9	21.4	13.6	14.2	14.1	14.6	15.1
8H	20.2	20.7	20.7	21.1	21.6	13.8	14.3	14.3	14.8	15.3

Variations with the observer position at spacings(CIE Pub.117):		
S = 1.0H	+ 0.4 / - 0.2	+ 0.4 / - 0.5
1.5H	+ 0.9 / - 0.9	+ 0.1 / - 0.3
2.0H	+ 1.7 / - 2.0	+ 0.4 / - 0.7

CIE Pub.117, 61.32 lm Total Lamp Luminous Flux Corrected (8log(F/F0) = -9.7)  
Area: 0.002109 m2

C Range: 0 - 360DEG	γ Range: 0 - 90DEG
C Interval: 45.0DEG	γ Interval: 1.0DEG
Test Speed: HIGH	Test System:EVERFINE GO-2000H_V1 SYSTEM V2.00.456
Temperature:25.3℃	Humidity:65.0%
Operators:Chen Songyu	Test Distance:9.520m [K=1.0000]
Test Date:2025-12-09	Remarks:

**UTILIZATION FACTORS TABLE**

Test:U:230.36V I:0.0162A P:3.1314W PF:0.8371 Freq:49.99Hz UTHDi:0.00% ITHDi:0.00% KDisp:0 Lamp Flux:61.3231x1 lm		
Name: DL195-2.5-3W-P3	Type: 3W	Weight:
SPEC.: 3000K	DIM.:	Instrument No.: HUP-IES-B3
MFR.: EVERFINE	SUR.: 0.057*0.037	shielding angle:

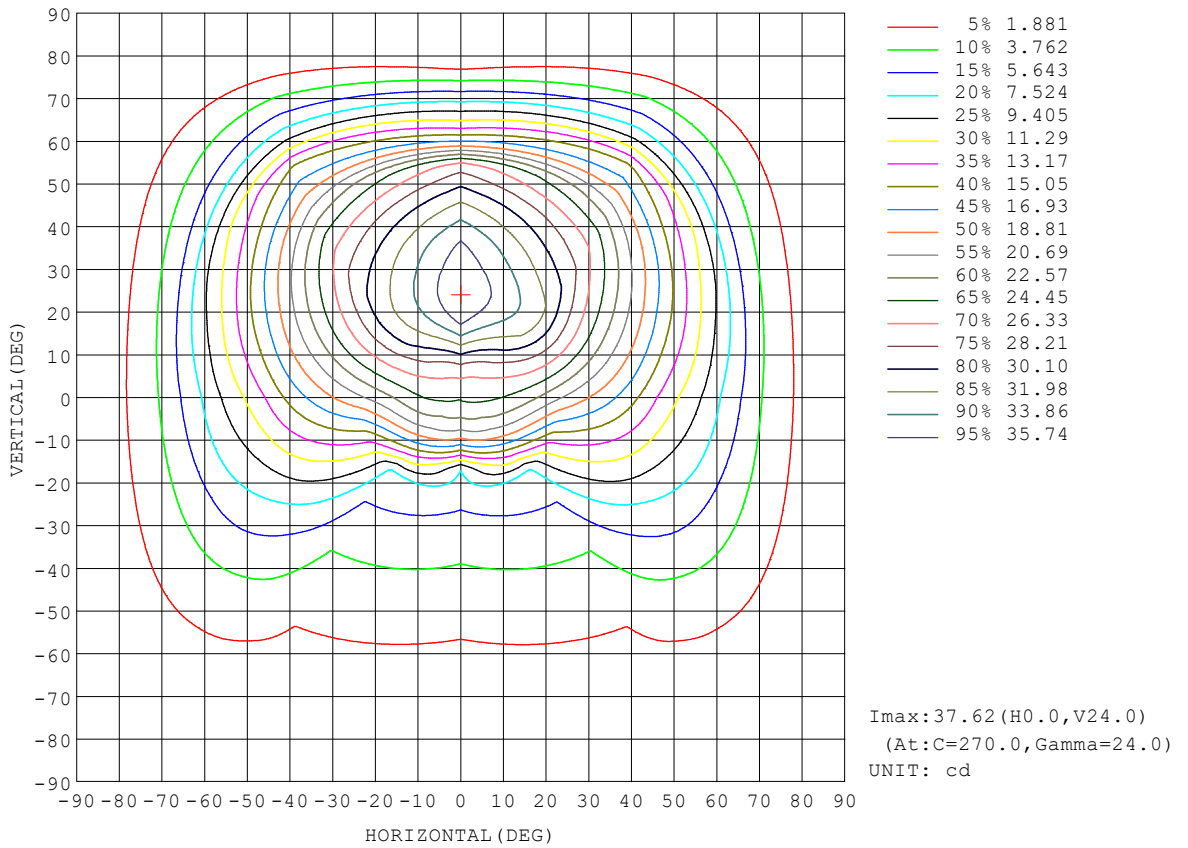
REFLECTANCE										
Ceiling	0.8	0.8	0.8	0.7	0.7	0.7	0.5	0.5	0.5	0
Walls	0.7	0.5	0.3	0.7	0.5	0.3	0.7	0.5	0.3	0
Working plane	0.2	0.2	0.2	0.2	0.2	0.2	0.2	0.2	0.2	0
ROOM INDEX	UTILIZATION FACTORS (PERCENT) $k(RI) \times RCR = 5$									
k = 0.60	59	48	41	58	48	41	57	47	41	34
0.80	70	58	51	69	58	51	67	57	51	44
1.00	78	68	61	77	67	60	75	68	60	53
1.25	85	76	69	84	75	68	81	73	68	61
1.50	90	81	75	89	80	74	86	78	73	66
2.00	97	89	83	95	88	82	92	86	81	73
2.50	101	93	88	99	92	87	95	89	85	77
3.00	104	98	92	102	96	91	98	93	89	81
4.00	108	102	98	105	101	97	101	97	94	85
5.00	110	105	102	107	103	100	103	100	97	88
ROOM INDEX	UF(total)									Direct
According to DIN EN 13032-2 2004			Suspended				SHRNOM = 1.25			

C Range: 0 - 360DEG  
 C Interval: 45.0DEG  
 Test Speed: HIGH  
 Temperature:25.3°C  
 Operators:Chen Songyu  
 Test Date:2025-12-09

γ Range: 0 - 90DEG  
 γ Interval: 1.0DEG  
 Test System:EVERFINE GO-2000H\_V1 SYSTEM V2.00.456  
 Humidity:65.0%  
 Test Distance:9.520m [K=1.0000]  
 Remarks:

**ISOCANDELA DIAGRAM**

Test:U:230.36V I:0.0162A P:3.1314W PF:0.8371 Freq:49.99Hz UTHDi:0.00% ITHDi:0.00% KDisp:0 Lamp Flux:61.3231x1 lm		
Name: DL195-2.5-3W-P3	Type: 3W	Weight:
SPEC.: 3000K	DIM.:	Instrument No.: HUP-IES-B3
MFR.: EVERFINE	SUR.: 0.057*0.037	shielding angle:

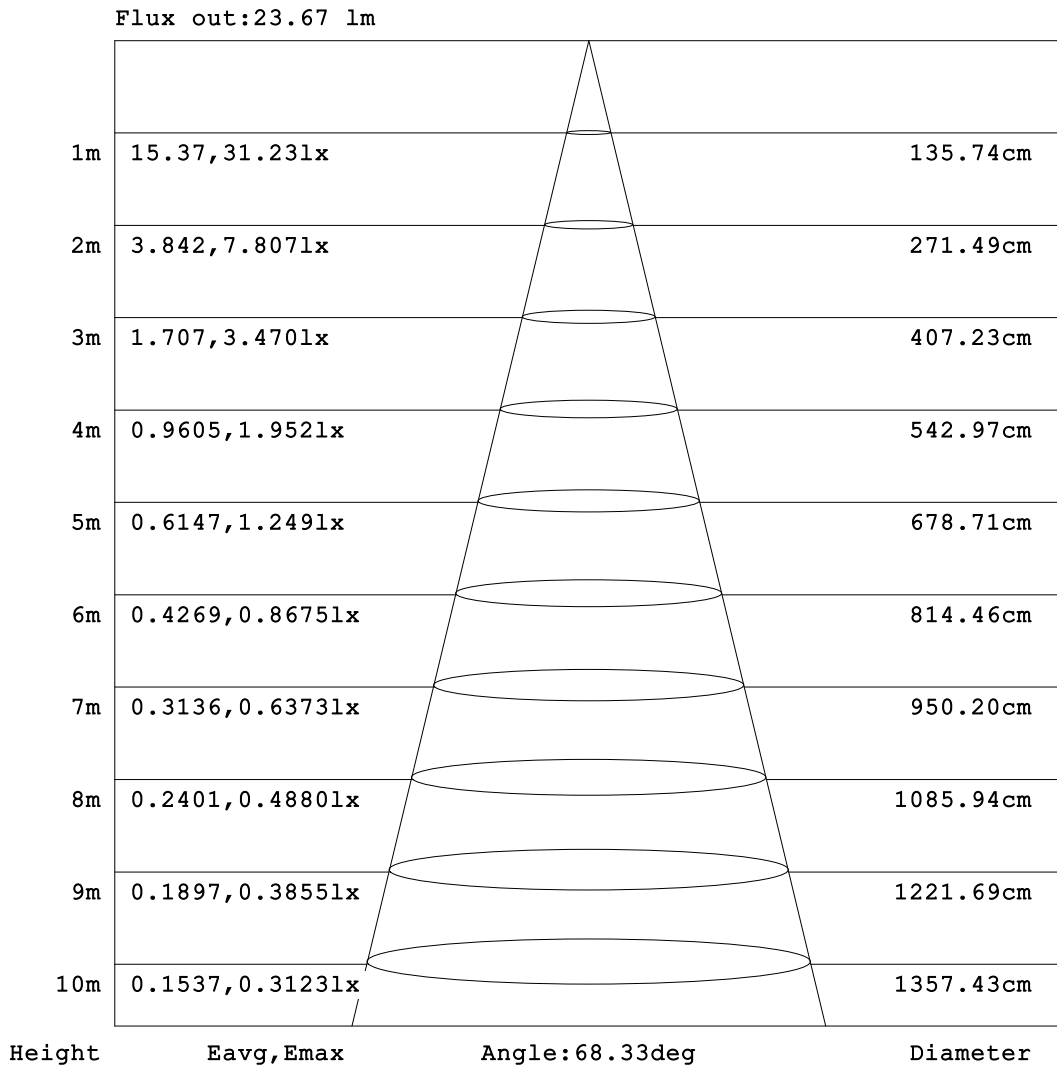


C Range: 0 - 360DEG  
 C Interval: 45.0DEG  
 Test Speed: HIGH  
 Temperature:25.3℃  
 Operators:Chen Songyu  
 Test Date:2025-12-09

γ Range: 0 - 90DEG  
 γ Interval: 1.0DEG  
 Test System:EVERFINE GO-2000H\_V1 SYSTEM V2.00.456  
 Humidity:65.0%  
 Test Distance:9.520m [K=1.0000]  
 Remarks:

**AAI Figure**

Test:U:230.36V I:0.0162A P:3.1314W PF:0.8371 Freq:49.99Hz UTHDi:0.00% ITHDi:0.00% KDisp:0 Lamp Flux:61.3231x1 lm		
Name: DL195-2.5-3W-P3	Type: 3W	Weight:
SPEC.: 3000K	DIM.:	Instrument No.: HUP-IES-B3
MFR.: EVERFINE	SUR.: 0.057*0.037	shielding angle:



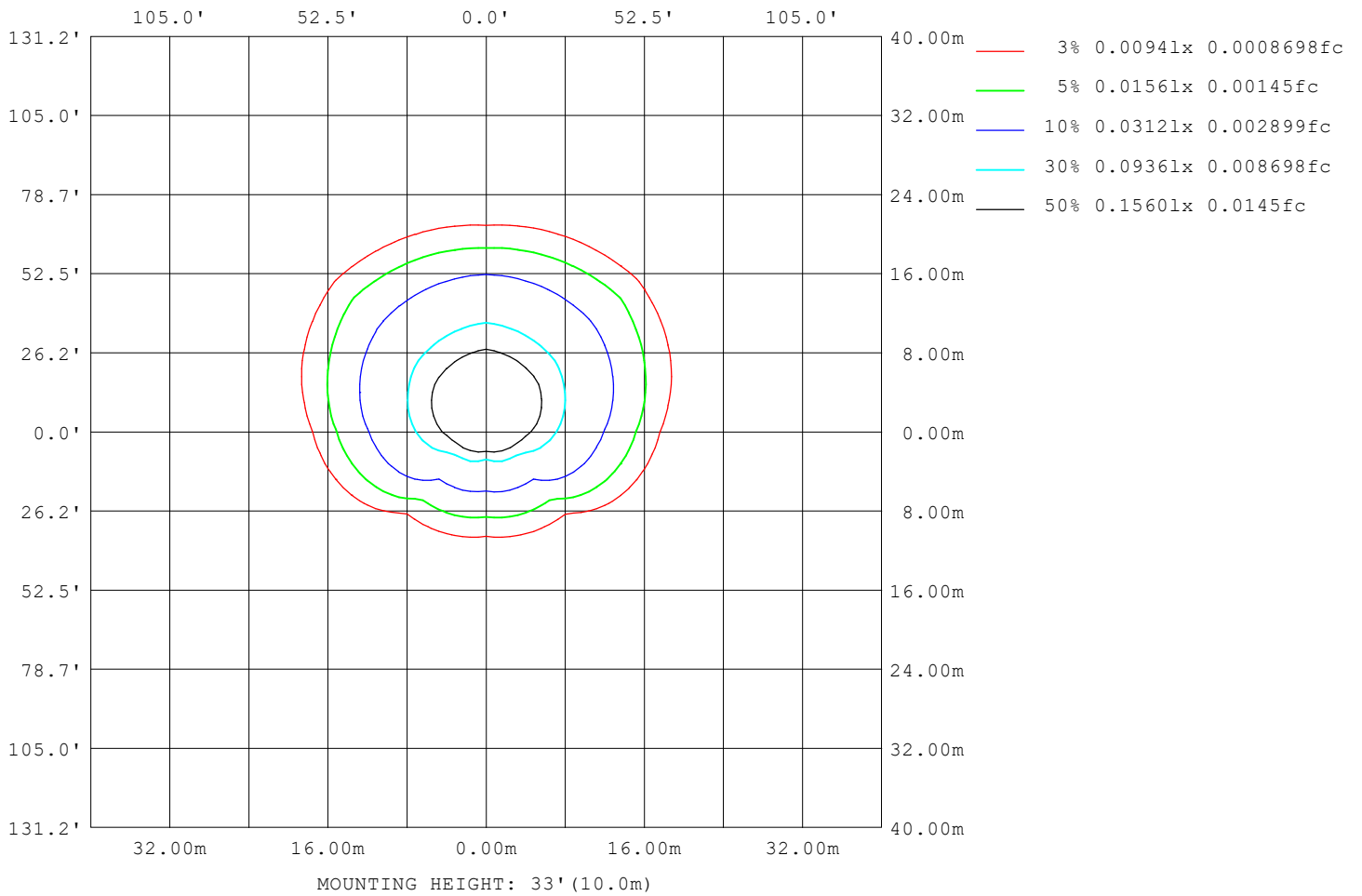
Note:The Curves indicate the illuminated area and the average illumination when the luminaire is at different distance.

C Range: 0 - 360DEG  
C Interval: 45.0DEG  
Test Speed: HIGH  
Temperature:25.3°C  
Operators:Chen Songyu  
Test Date:2025-12-09

γ Range: 0 - 90DEG  
γ Interval: 1.0DEG  
Test System:EVERFINE GO-2000H\_V1 SYSTEM V2.00.456  
Humidity:65.0%  
Test Distance:9.520m [K=1.0000]  
Remarks:

**ISOLUX DIAGRAM**

Test:U:230.36V I:0.0162A P:3.1314W PF:0.8371 Freq:49.99Hz UTHDi:0.00% ITHDi:0.00% KDisp:0 Lamp Flux:61.3231x1 lm		
Name: DL195-2.5-3W-P3	Type: 3W	Weight:
SPEC.: 3000K	DIM.:	Instrument No.: HUP-IES-B3
MFR.: EVERFINE	SUR.: 0.057*0.037	shielding angle:



C Range: 0 - 360DEG  
 C Interval: 45.0DEG  
 Test Speed: HIGH  
 Temperature:25.3°C  
 Operators:Chen Songyu  
 Test Date:2025-12-09

γ Range: 0 - 90DEG  
 γ Interval: 1.0DEG  
 Test System:EVERFINE GO-2000H\_V1 SYSTEM V2.00.456  
 Humidity:65.0%  
 Test Distance:9.520m [K=1.0000]  
 Remarks:

**LED Avg.L Report**

Test:U:230.36V I:0.0162A P:3.1314W PF:0.8371 Freq:49.99Hz UTHDi:0.00% ITHDi:0.00% KDisp:0 Lamp Flux:61.3231x1 lm		
Name: DL195-2.5-3W-P3	Type: 3W	Weight:
SPEC.: 3000K	DIM.:	Instrument No.: HUP-IES-B3
MFR.: EVERFINE	SUR.: 0.057*0.037	shielding angle:

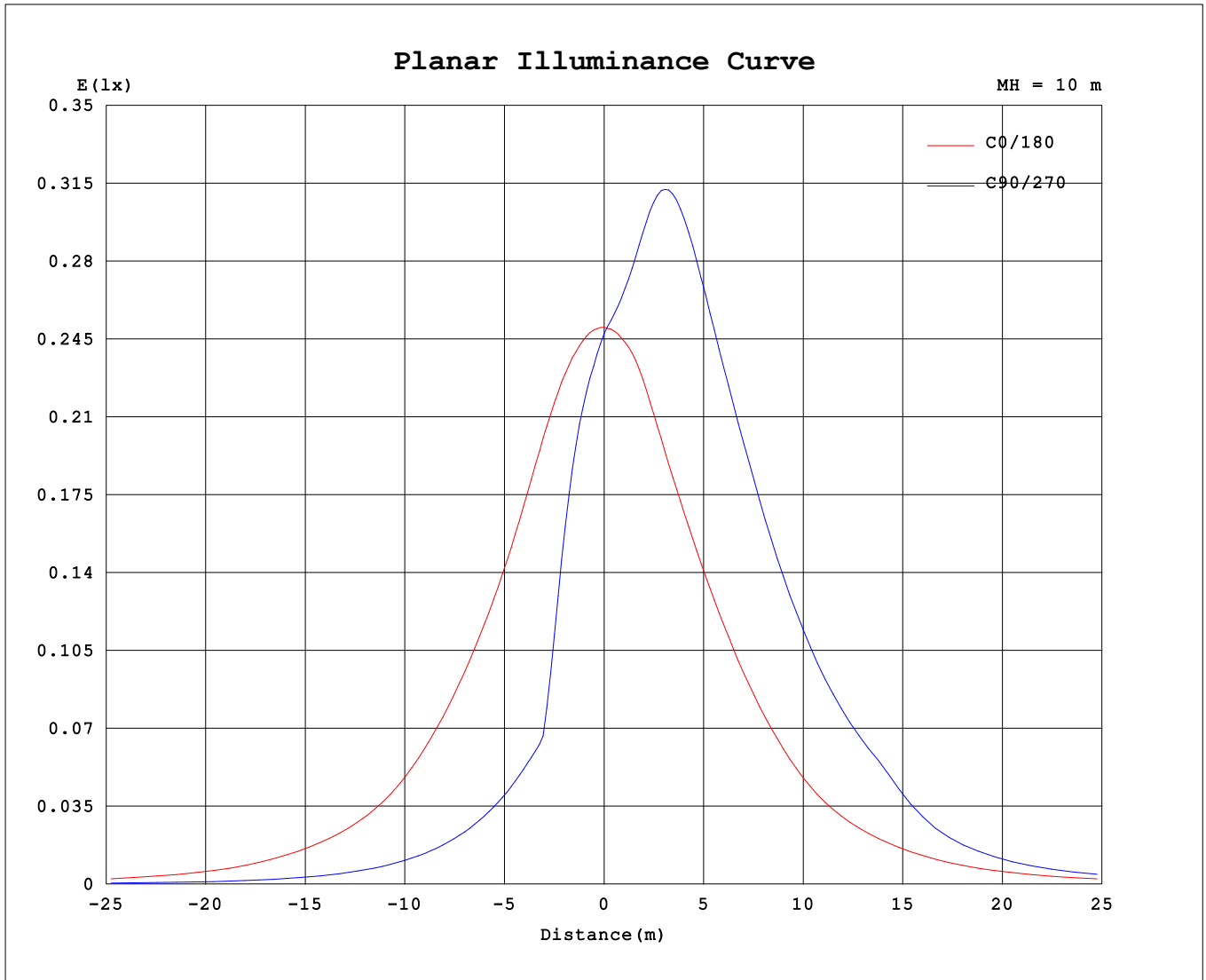
AvgL	cd/m2
L_0~180 (65) av	6550
L_0~180 (75) av	4678
L_0~180 (85) av	3719
L_90~270 (65) av	6935
L_90~270 (75) av	3451
L_90~270 (85) av	1839
L_45 (65) av	8214
L_45 (75) av	4669
L_45 (85) av	2305

Standard: GB/T 29293-2012

C Range: 0 - 360DEG  
 C Interval: 45.0DEG  
 Test Speed: HIGH  
 Temperature:25.3℃  
 Operators:Chen Songyu  
 Test Date:2025-12-09

γ Range: 0 - 90DEG  
 γ Interval: 1.0DEG  
 Test System:EVERFINE GO-2000H\_V1 SYSTEM V2.00.456  
 Humidity:65.0%  
 Test Distance:9.520m [K=1.0000]  
 Remarks:

**Planar Illuminance Curve**



C Range: 0 - 360DEG  
 C Interval: 45.0DEG  
 Test Speed: HIGH  
 Temperature: 25.3 °C  
 Operators: Chen Songyu  
 Test Date: 2025-12-09

γ Range: 0 - 90DEG  
 γ Interval: 1.0DEG  
 Test System: EVERFINE GO-2000H\_V1 SYSTEM V2.00.456  
 Humidity: 65.0%  
 Test Distance: 9.520m [K=1.0000]  
 Remarks:

