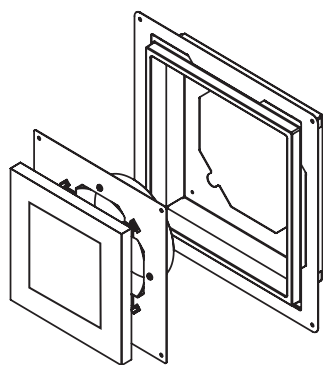


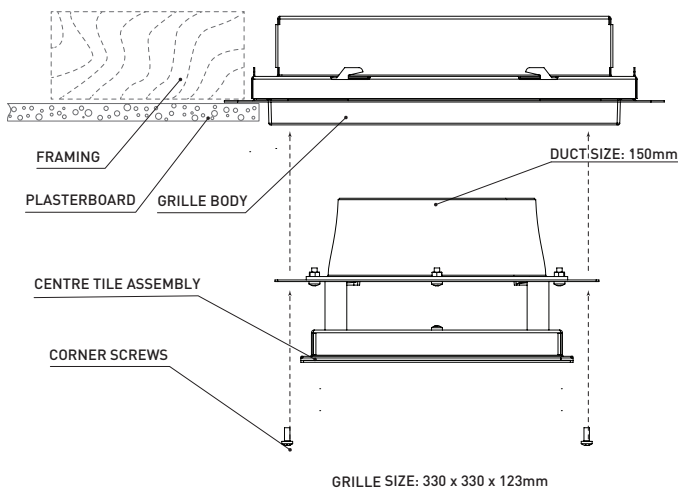
VIG2L - ILLUSION ARCHITECTURAL GRILLE WITH LIGHT



SPECIFICATIONS

Input Voltage	200 - 240V AC, 50Hz
Typical Power	10W
Duct Size	150mm
Overall Dimensions	330 x 330 x 123mm

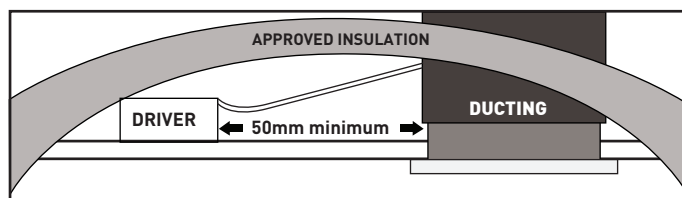
FITTING DIAGRAM



SAFETY

This product is suitable for use with building insulation that can safely be continually exposed to temperatures up to 90° C and must withstand a 30 second needle flame test carried out in accordance with AS/NZS 60695.11.5 with the flame applied to all surfaces of the sample.

Loose fill insulation as defined in NZS 4246 is not permitted to abut or cover this driver and switch.



RISK OF FIRE - Required clearance from structural members and building elements.

SCB = 0mm
HCB = 0mm

MIC = 0mm
SCI = 0mm

WARRANTY

This product is covered by the standard 5 Year Vynco Warranty - proof of purchase is required. Please contact Vynco for details of returns procedure.

NOTE: This product contains NO user serviceable parts.

VYNCO INDUSTRIES (NZ) LIMITED

CHRISTCHURCH

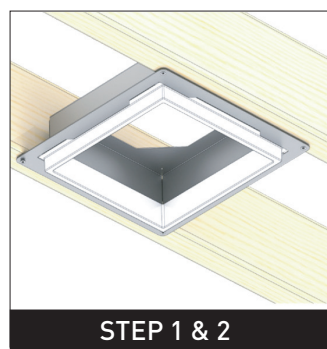
388 Tuam Street, Phillipstown, Christchurch, 8011
PO Box 9022, Tower Junction, Christchurch 8149
New Zealand
P +64 3 379 9283 F +64 3 379 6838
E sales@vynco.co.nz

VYNCO.CO.NZ

AUCKLAND

9 Levene Place, Mount Wellington
PO Box 12 249, Penrose, Auckland 1061
New Zealand
P +64 9 525 6051 F +64 9 525 5799

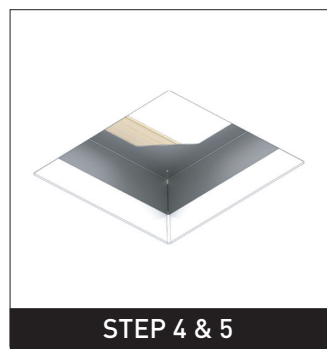
VIG2L - ILLUSION ARCHITECTURAL GRILLE WITH LIGHT



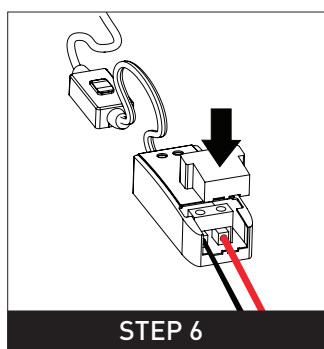
STEP 1 & 2



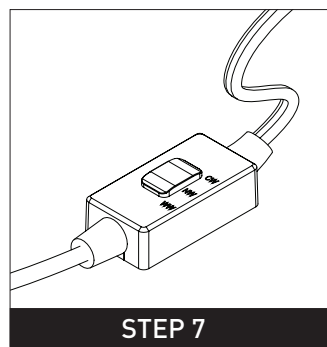
STEP 3



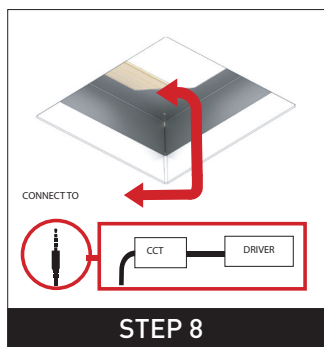
STEP 4 & 5



STEP 6



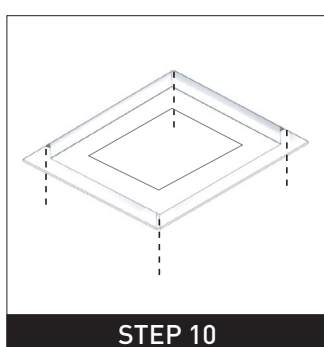
STEP 7



STEP 8



STEP 9



STEP 10

INSTALLATION PROCEDURE

STEP 1

Remove centre tile assembly from grille by removing 4x corner screws.

STEP 2

Secure body of grille to ceiling framing / battens, ensuring that plaster step will finish flush with the outer surface of plasterboard when installed.

STEP 3

Cut out 268mm square in plasterboard and secure around grille (cutting template supplied).

STEP 4

Plaster, sand and finish join between plasterboard and grille. Note: plaster step of grille can be sanded as required to achieve flush finish.

STEP 5

Paint grille, ceiling and if desired grille centre tile to ceiling colour. Ensure internal edge of grille plaster step is painted.

STEP 6

Wire up LED panel driver to mains power supply. NOTE: Ensure power is off.

STEP 7

Select colour temperature with CCT switch.

STEP 8

Connect centre light assembly to CCT switch and place driver, CCT switch and connector in ceiling space.

STEP 9

Pull ducting through centre opening and secure to spigot on centre light assembly with duct tape.

STEP 10

Insert centre light assembly and duct into installed grille body and secure with 4x corner screws. Ensure cable is not jammed between light assembly and installed grille body.