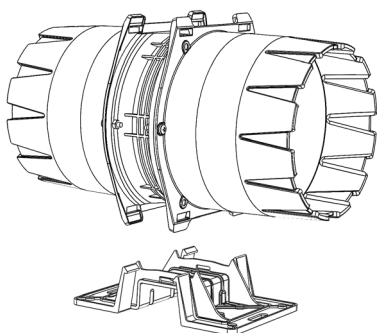


VAF16 - IN-LINE AXIAL FAN



IP44



SPECIFICATIONS

Input Voltage	230 - 240V AC, 50Hz
Power	20W
No. of Blades	9
Duct Size	150mm
IP Rating	IP44
Operating Temperature	-10 to 70°C
Air Pressure	125Pa

WARRANTY

This product is covered by the standard 5 Year Vynco Warranty - proof of purchase is required. Please contact Vynco for details of returns procedure.

NOTE: This product contains NO user serviceable parts.

SAFETY

Make sure the power is switched off before installing the fan.

Don't use the fan if the power cord or plug is damaged.

Return to the wholesaler for faulty product process through electrician.

Don't use the fan if it's damaged, malfunctions or is dropped. The fan is designed for indoor use only.

Don't put any insulation around or over the fan. For inline duct use, airflow is ducted outside.

This fixed appliance is not intended for use by persons (including children) with reduced physical, sensory or mental capabilities, or lack of experience and knowledge, unless they have been given supervision or instructions concerning use of the appliance by a person responsible for their safety.

Children should be supervised to ensure that they do not play with the appliance.

This product should be installed by a suitably qualified person in accordance with Australian and New Zealand wiring rules.

VYNCO INDUSTRIES (NZ) LIMITED

CHRISTCHURCH

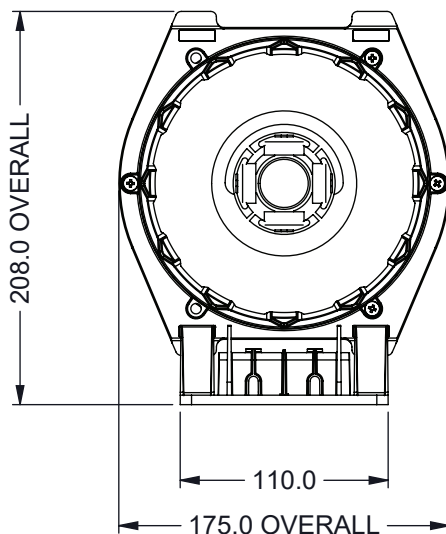
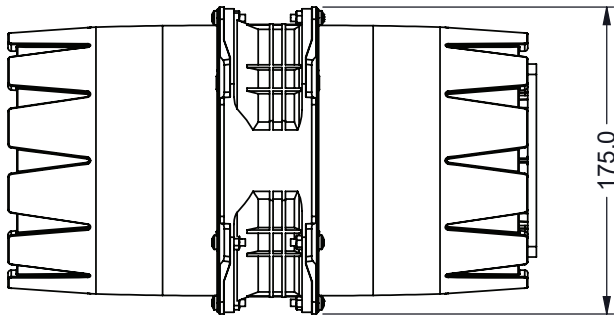
388 Tuam Street, Phillipstown, Christchurch, 8011
PO Box 9022, Tower Junction, Christchurch 8149
New Zealand
P +64 3 379 9283 F +64 3 379 6838
E sales@vynco.co.nz

VYNCO.CO.NZ

AUCKLAND

9 Levene Place, Mount Wellington
PO Box 12 249, Penrose, Auckland 1061
New Zealand
P +64 9 525 6051 F +64 9 525 5799

VAF16 - IN-LINE AXIAL FAN



INSTALLATION PROCEDURE

STEP 1

The preferred method is to mount the fan base onto a solid surface, in the roof space at least 2.3m above the floor, by screwing it to the timber trusses. Use at least No. 6 x 1/2 inch screws.

STEP 2

Keep the fan at least 50mm away from surrounding structures.

STEP 3

Attach 150mm ducting onto each end of the fan using duct tape.

STEP 4

Make sure the ducting is not impeding the fan blade. The duct should be pulled tight and cut to length, and connected to the internal grille and external grille, otherwise the performance of the fan will be affected.

STEP 5

Attach the fan to the mounted fan base. Ensure all 4 snap hooks are secured correctly. Plug the fan into a power point.