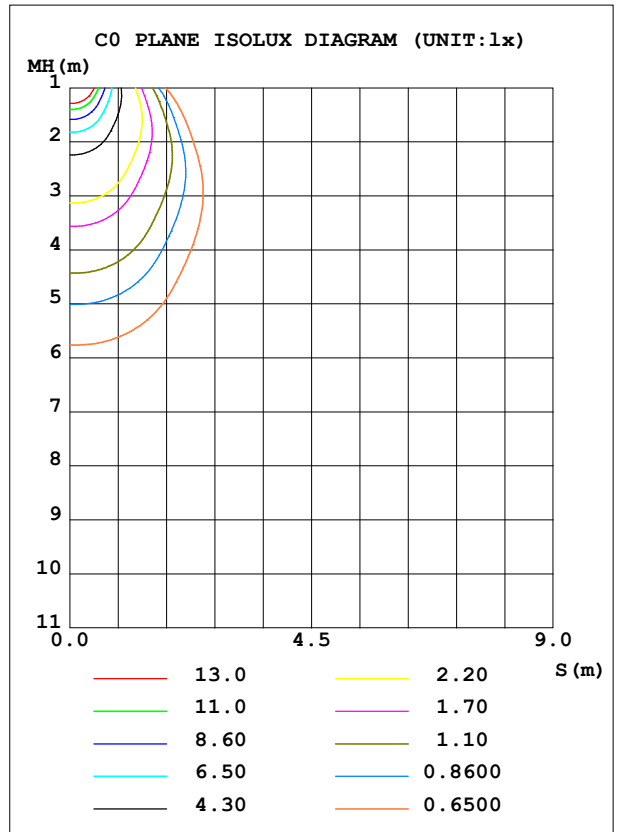
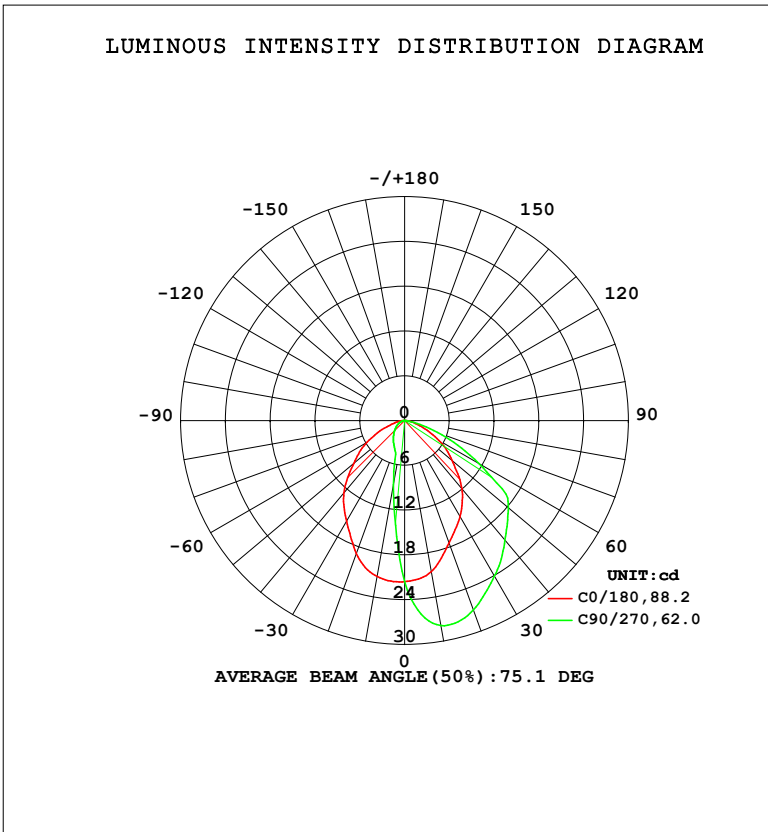


**LUMINAIRE PHOTOMETRIC TEST REPORT**

Test:U:230.36V I:0.0165A P:3.2218W PF:0.8460 Freq:49.99Hz		
UTHDi:0.00% ITHDi:0.00% KDisp:0 Lamp Flux:42.4005x1 lm		
Name: DL195-2.5-3W-P3	Type: 3W	Weight:
SPEC.: 5700K	DIM.:	Instrument No.: HUP-IES-B3
MFR.: EVERFINE	SUR.: 0.057*0.037	shielding angle:

DATA OF LAMP		PHOTOMETRIC DATA				Eff: 13.16 lm/W
MODEL	DL195-2.5-3W-P3	I <sub>max</sub> (cd)	28.02	S/MH (C0/180)	1.09	
NOMINAL POWER (W)	3	LOR (%)	100.0	S/MH (C90/270)	1.55	
RATED VOLTAGE (V)	230	TOTAL FLUX (lm)	42.401	η UP, DN (C0-180)	0.0, 23.7	
NOMINAL FLUX (lm)	42.4005	CIE CLASS	DIRECT	η UP, DN (C180-360)	0.0, 76.3	
LAMPS INSIDE	1	η up (%)	0.0	CIBSE SHR NOM	0.75	
TEST VOLTAGE (V)	230	η down (%)	100.0	CIBSE SHR MAX	0.95	



C Range: 0 - 360DEG  
 C Interval: 45.0DEG  
 Test Speed: HIGH  
 Temperature: 25.3 °C  
 Operators: Chen Songyu  
 Test Date: 2025-12-09

γ Range: 0 - 90DEG  
 γ Interval: 1.0DEG  
 Test System: EVERFINE GO-2000H\_V1 SYSTEM V2.00.456  
 Humidity: 65.0%  
 Test Distance: 9.520m [K=1.0000]  
 Remarks:

ZONAL FLUX DIAGRAM

ZONAL FLUX DIAGRAM:

$\gamma$	C0	C45	C90	C135	C180	C225	C270	C315	$\gamma$	$\Phi$ zone	$\Phi$ total	%lum,lamp
10	21.22	11.60	8.720	11.43	20.58	26.43	27.89	26.64	0- 10	1.931	1.931	4.55,4.55
20	18.95	4.995	3.972	4.852	17.45	25.02	26.98	26.17	10- 20	4.965	6.896	16.3,16.3
30	15.59	3.532	3.045	3.497	14.87	21.47	24.08	22.43	20- 30	6.799	13.70	32.3,32.3
40	12.68	2.706	2.270	2.673	11.96	18.41	20.93	18.55	30- 40	7.769	21.46	50.6,50.6
50	8.888	1.963	1.615	1.938	8.310	15.03	18.14	15.15	40- 50	7.781	29.25	69,69
60	5.840	1.310	1.055	1.291	5.318	11.28	11.50	11.42	50- 60	6.779	36.02	85,85
70	2.592	0.7574	0.6011	0.7449	2.374	5.250	4.731	5.231	60- 70	4.397	40.42	95.3,95.3
80	0.9241	0.3037	0.2412	0.2989	0.8902	1.043	0.6137	1.009	70- 80	1.681	42.10	99.3,99.3
90	0.0289	0.0289	0.0377	0.0374	0.0318	0.0203	0.0203	0.0230	80- 90	0.2977	42.40	100,100
100									90-100			
110									100-110			
120									110-120			
130									120-130			
140									130-140			
150									140-150			
160									150-160			
170									160-170			
180									170-180			
DEG	LUMINOUS INTENSITY:cd									UNIT:lm		

Conical surface Flux(90deg): 25.42 lm

%lum = 60.0%

%lamp = 60.0%

Conical surface Flux(120deg): 36.024 lm

%lum = 85.0%

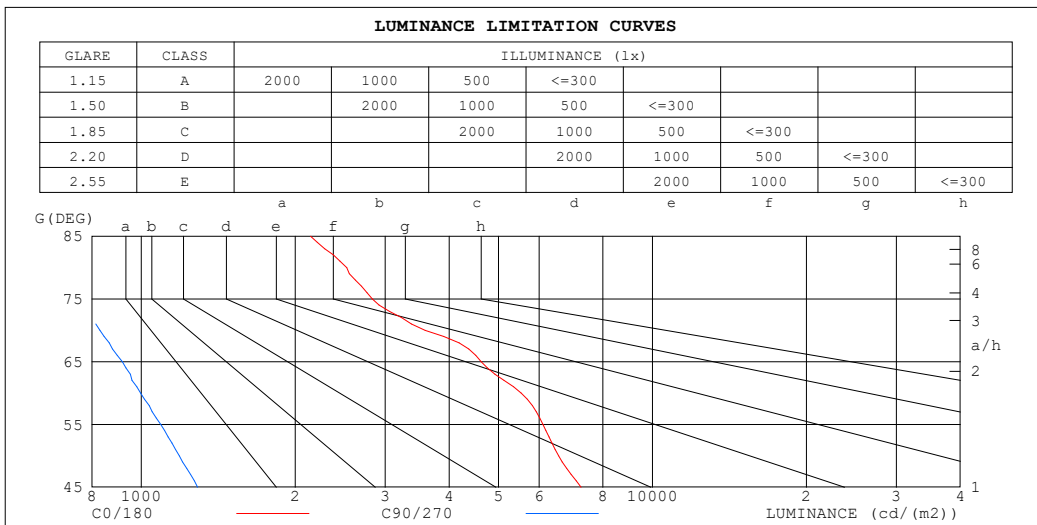
%lamp = 85.0%

C Range: 0 - 360DEG  
 C Interval: 45.0DEG  
 Test Speed: HIGH  
 Temperature:25.3℃  
 Operators:Chen Songyu  
 Test Date:2025-12-09

$\gamma$  Range: 0 - 90DEG  
 $\gamma$  Interval: 1.0DEG  
 Test System:EVERFINE GO-2000H\_V1 SYSTEM V2.00.456  
 Humidity:65.0%  
 Test Distance:9.520m [K=1.0000]  
 Remarks:

**LUMINANCE LIMITATION CURVES**

Test:U:230.36V I:0.0165A P:3.2218W PF:0.8460 Freq:49.99Hz UTHDi:0.00% ITHDi:0.00% KDisp:0 Lamp Flux:42.4005x1 lm		
Name: DL195-2.5-3W-P3	Type: 3W	Weight:
SPEC.: 5700K	DIM.:	Instrument No.: HUP-IES-B3
MFR.: EVERFINE	SUR.: 0.057*0.037	shielding angle:



LUMINANCE cd/(m2)		
G (DEG)	C0/180	C90/270
85	2143	646
80	2522	656
75	2831	742
70	3592	830
65	4625	918
60	5535	996
55	6105	1091
50	6553	1186
45	7248	1288

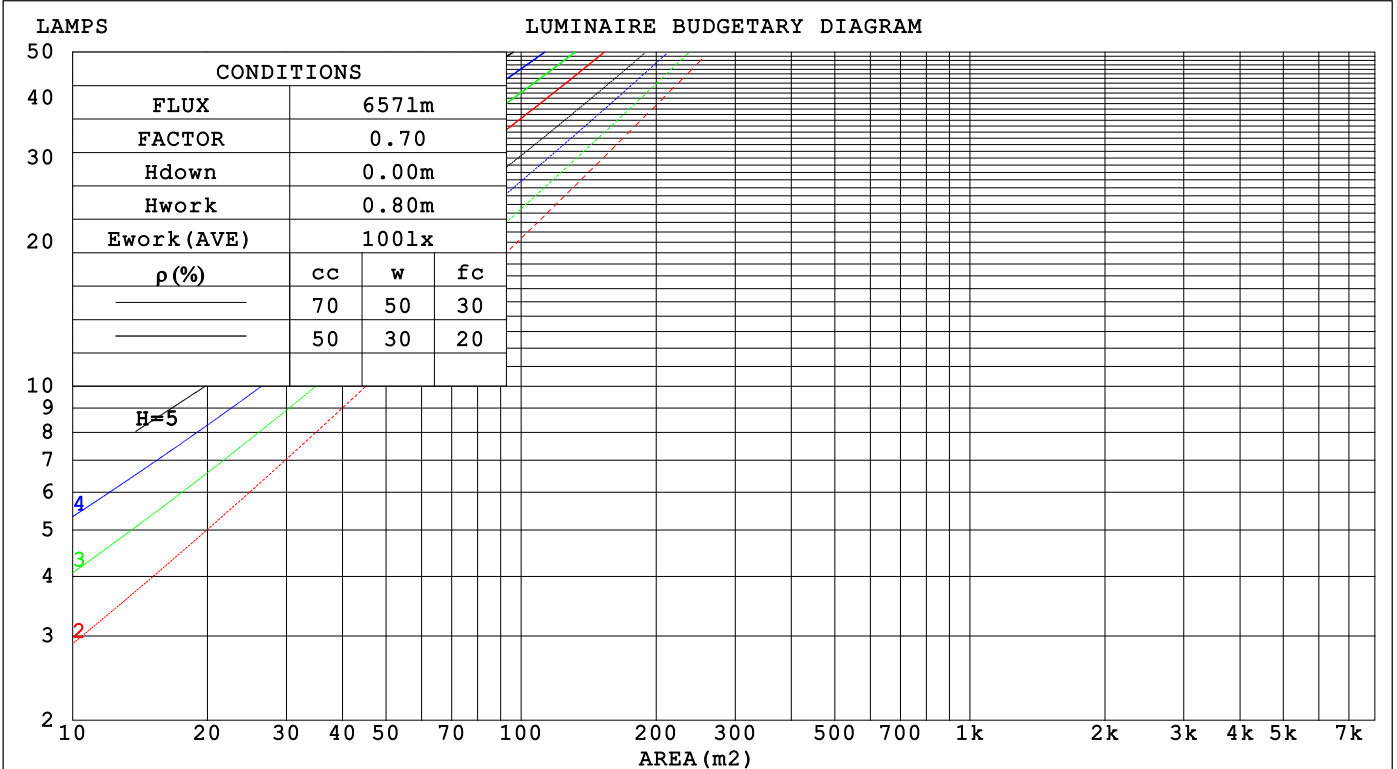
C Range: 0 - 360DEG  
 C Interval: 45.0DEG  
 Test Speed: HIGH  
 Temperature: 25.3 °C  
 Operators: Chen Songyu  
 Test Date: 2025-12-09

γ Range: 0 - 90DEG  
 γ Interval: 1.0DEG  
 Test System: EVERFINE GO-2000H\_V1 SYSTEM V2.00.456  
 Humidity: 65.0%  
 Test Distance: 9.520m [K=1.0000]  
 Remarks:

**CU AND LUMINAIRE BUDGETARY ESTIMATE DIAGRAM**

Test:U:230.36V I:0.0165A P:3.2218W PF:0.8460 Freq:49.99Hz		
UTHdi:0.00% ITHdi:0.00% KDisp:0 Lamp Flux:42.4005x1 lm		
Name: DL195-2.5-3W-P3	Type: 3W	Weight:
SPEC.: 5700K	DIM.:	Instrument No.: HUP-IES-B3
MFR.: EVERFINE	SUR.: 0.057*0.037	shielding angle:

pcc	80%			70%			50%			30%			10%			0
	50%	30%	10%	50%	30%	10%	50%	30%	10%	50%	30%	10%	50%	30%	10%	0
pw																
pfc	20%			20%			20%			20%			20%			0
RCR	RCR:Room Cavity Ratio Coefficients of Utilization(CU)															
0.0	1.19	1.19	1.19	1.16	1.16	1.16	1.11	1.11	1.11	1.06	1.06	1.06	1.02	1.02	1.02	1.00
1.0	1.06	1.02	.99	1.04	1.00	.97	.99	.96	.94	.95	.93	.91	.92	.90	.88	.86
2.0	.93	.87	.82	.91	.86	.81	.88	.83	.79	.85	.81	.77	.82	.78	.76	.73
3.0	.83	.75	.69	.81	.74	.68	.78	.72	.67	.76	.70	.66	.73	.69	.65	.63
4.0	.74	.66	.59	.72	.65	.59	.70	.63	.58	.68	.62	.57	.66	.61	.57	.54
5.0	.66	.58	.52	.65	.57	.51	.63	.56	.51	.61	.55	.50	.59	.54	.50	.48
6.0	.60	.51	.45	.59	.51	.45	.57	.50	.45	.56	.49	.44	.54	.48	.44	.42
7.0	.55	.46	.40	.54	.46	.40	.52	.45	.40	.51	.44	.40	.50	.44	.39	.37
8.0	.50	.42	.36	.49	.42	.36	.48	.41	.36	.47	.40	.36	.46	.40	.36	.34
9.0	.46	.38	.33	.46	.38	.33	.44	.37	.33	.43	.37	.32	.42	.37	.32	.31
10.0	.43	.35	.30	.42	.35	.30	.41	.34	.30	.40	.34	.30	.39	.34	.30	.28



C Range: 0 - 360DEG  
 C Interval: 45.0DEG  
 Test Speed: HIGH  
 Temperature:25.3°C  
 Operators:Chen Songyu  
 Test Date:2025-12-09

γ Range: 0 - 90DEG  
 γ Interval: 1.0DEG  
 Test System:EVERFINE GO-2000H\_V1 SYSTEM V2.00.456  
 Humidity:65.0%  
 Test Distance:9.520m [K=1.0000]  
 Remarks:

**WEC AND CCEC**

Test:U:230.36V I:0.0165A P:3.2218W PF:0.8460 Freq:49.99Hz		
UTHDi:0.00% ITHDi:0.00% KDisp:0 Lamp Flux:42.4005x1 lm		
Name: DL195-2.5-3W-P3	Type: 3W	Weight:
SPEC.: 5700K	DIM.:	Instrument No.: HUP-IES-B3
MFR.: EVERFINE	SUR.: 0.057*0.037	shielding angle:

$\rho_{CC}$	80%			70%			50%			30%			10%			0
$\rho_w$	50%	30%	10%	50%	30%	10%	50%	30%	10%	50%	30%	10%	50%	30%	10%	0
$\rho_{fc}$	20%			20%			20%			20%			20%			0
RCR	RCR:Room Cavity Ratio						Wall Exitance Coefficients(WEC)									
0.0																
1.0	.274	.156	.049	.267	.152	.048	.254	.146	.046	.242	.139	.045	.231	.134	.043	
2.0	.264	.145	.044	.258	.142	.044	.247	.137	.043	.236	.132	.041	.226	.128	.040	
3.0	.249	.132	.040	.243	.130	.039	.233	.126	.038	.224	.123	.038	.215	.119	.037	
4.0	.232	.121	.035	.227	.119	.035	.219	.116	.035	.210	.113	.034	.203	.110	.034	
5.0	.217	.110	.032	.212	.109	.032	.204	.106	.031	.197	.104	.031	.190	.102	.031	
6.0	.202	.101	.029	.199	.100	.029	.191	.098	.029	.185	.096	.028	.179	.094	.028	
7.0	.189	.094	.027	.186	.093	.026	.180	.091	.026	.174	.089	.026	.168	.087	.026	
8.0	.178	.087	.024	.175	.086	.024	.169	.084	.024	.164	.083	.024	.159	.081	.024	
9.0	.167	.081	.023	.164	.080	.022	.159	.079	.022	.154	.077	.022	.150	.076	.022	
10.0	.157	.075	.021	.155	.075	.021	.150	.074	.021	.146	.073	.021	.142	.071	.021	

$\rho_{CC}$	80%			70%			50%			30%			10%			0
$\rho_w$	50%	30%	10%	50%	30%	10%	50%	30%	10%	50%	30%	10%	50%	30%	10%	0
$\rho_{fc}$	20%			20%			20%			20%			20%			0
RCR	RCR:Room Cavity Ratio						Ceiling Cavity Exitance Coefficients(CCEC)									
0.0																
1.0	.190	.190	.190	.163	.163	.163	.111	.111	.111	.064	.064	.064	.020	.020	.020	
2.0	.178	.156	.137	.152	.134	.118	.104	.092	.082	.060	.053	.047	.019	.017	.015	
3.0	.169	.132	.101	.144	.114	.088	.099	.079	.061	.057	.046	.036	.018	.015	.012	
4.0	.160	.114	.077	.137	.098	.067	.094	.068	.047	.055	.040	.028	.018	.013	.009	
5.0	.153	.101	.061	.131	.087	.053	.090	.061	.037	.052	.035	.022	.017	.012	.007	
6.0	.145	.090	.049	.125	.078	.043	.086	.054	.030	.050	.032	.018	.016	.010	.006	
7.0	.138	.082	.041	.119	.071	.036	.082	.049	.025	.048	.029	.015	.015	.010	.005	
8.0	.132	.075	.035	.113	.065	.030	.078	.045	.021	.046	.027	.013	.015	.009	.004	
9.0	.126	.069	.030	.108	.060	.026	.075	.042	.018	.044	.025	.011	.014	.008	.004	
10.0	.120	.064	.026	.103	.055	.023	.071	.039	.016	.042	.023	.010	.013	.008	.003	
10.0	.114	.060	.023	.099	.052	.020	.068	.036	.014	.040	.022	.009	.013	.007	.003	

C Range: 0 - 360DEG  
 C Interval: 45.0DEG  
 Test Speed: HIGH  
 Temperature:25.3℃  
 Operators:Chen Songyu  
 Test Date:2025-12-09

$\gamma$  Range: 0 - 90DEG  
 $\gamma$  Interval: 1.0DEG  
 Test System:EVERFINE GO-2000H\_V1 SYSTEM V2.00.456  
 Humidity:65.0%  
 Test Distance:9.520m [K=1.0000]  
 Remarks:

**UGR(Unified Glare Rating) Table**

Test:U:230.36V I:0.0165A P:3.2218W PF:0.8460 Freq:49.99Hz		
UTHDi:0.00% ITHDi:0.00% KDisp:0 Lamp Flux:42.4005x1 lm		
Name: DL195-2.5-3W-P3	Type: 3W	Weight:
SPEC.: 5700K	DIM.:	Instrument No.: HUP-IES-B3
MFR.: EVERFINE	SUR.: 0.057*0.037	shielding angle:

ceiling/cavity	0.7	0.7	0.5	0.5	0.3	0.7	0.7	0.5	0.5	0.3
walls	0.5	0.3	0.5	0.3	0.3	0.5	0.3	0.5	0.3	0.3
working plane	0.2	0.2	0.2	0.2	0.2	0.2	0.2	0.2	0.2	0.2

Room dimensions	Viewed crosswise					Viewed endwise				
x = 2H y = 2H	16.5	18.0	16.8	18.2	18.4	7.9	9.4	8.2	9.5	9.7
3H	17.7	19.0	18.0	19.2	19.5	9.0	10.3	9.3	10.5	10.8
4H	18.0	19.3	18.3	19.5	19.8	9.4	10.6	9.7	10.9	11.1
6H	18.3	19.5	18.6	19.7	20.0	9.7	10.8	10.0	11.1	11.4
8H	18.4	19.5	18.7	19.8	20.1	9.7	10.9	10.1	11.1	11.4
12H	18.4	19.5	18.8	19.8	20.1	9.8	10.9	10.1	11.2	11.5
4H 2H	16.4	17.6	16.7	17.9	18.1	9.2	10.4	9.5	10.7	10.9
3H	17.7	18.8	18.0	19.0	19.3	10.2	11.3	10.6	11.6	11.9
4H	18.1	19.1	18.5	19.4	19.7	10.7	11.7	11.1	12.0	12.3
6H	18.5	19.4	18.9	19.7	20.1	11.0	11.9	11.4	12.3	12.6
8H	18.6	19.4	19.0	19.8	20.2	11.2	12.0	11.6	12.3	12.7
12H	18.7	19.5	19.2	19.9	20.3	11.2	12.0	11.7	12.4	12.8
8H 4H	18.0	18.8	18.4	19.2	19.6	11.2	12.0	11.6	12.3	12.7
6H	18.5	19.2	18.9	19.6	20.0	11.6	12.3	12.1	12.7	13.1
8H	18.7	19.3	19.2	19.7	20.2	11.8	12.4	12.2	12.8	13.3
12H	18.9	19.4	19.3	19.8	20.3	11.9	12.4	12.4	12.9	13.4
12H 4H	18.0	18.7	18.4	19.1	19.5	11.3	12.0	11.7	12.4	12.8
6H	18.5	19.1	18.9	19.5	19.9	11.7	12.3	12.2	12.7	13.2
8H	18.7	19.2	19.2	19.6	20.1	11.9	12.4	12.4	12.9	13.4

Variations with the observer position at spacings(CIE Pub.117):		
S = 1.0H	+ 0.6 / - 0.3	+ 0.4 / - 0.5
1.5H	+ 1.3 / - 1.2	+ 0.2 / - 0.3
2.0H	+ 2.0 / - 2.7	+ 0.4 / - 0.7

CIE Pub.117, 42.40 lm Total Lamp Luminous Flux Corrected (8log(F/F0) = -11.0)  
 Area: 0.002109 m2

C Range: 0 - 360DEG	γ Range: 0 - 90DEG
C Interval: 45.0DEG	γ Interval: 1.0DEG
Test Speed: HIGH	Test System:EVERFINE GO-2000H_V1 SYSTEM V2.00.456
Temperature:25.3℃	Humidity:65.0%
Operators:Chen Songyu	Test Distance:9.520m [K=1.0000]
Test Date:2025-12-09	Remarks:

**UTILIZATION FACTORS TABLE**

Test:U:230.36V I:0.0165A P:3.2218W PF:0.8460 Freq:49.99Hz UTHDi:0.00% ITHDi:0.00% KDisp:0 Lamp Flux:42.4005x1 lm		
Name: DL195-2.5-3W-P3	Type: 3W	Weight:
SPEC.: 5700K	DIM.:	Instrument No.: HUP-IES-B3
MFR.: EVERFINE	SUR.: 0.057*0.037	shielding angle:

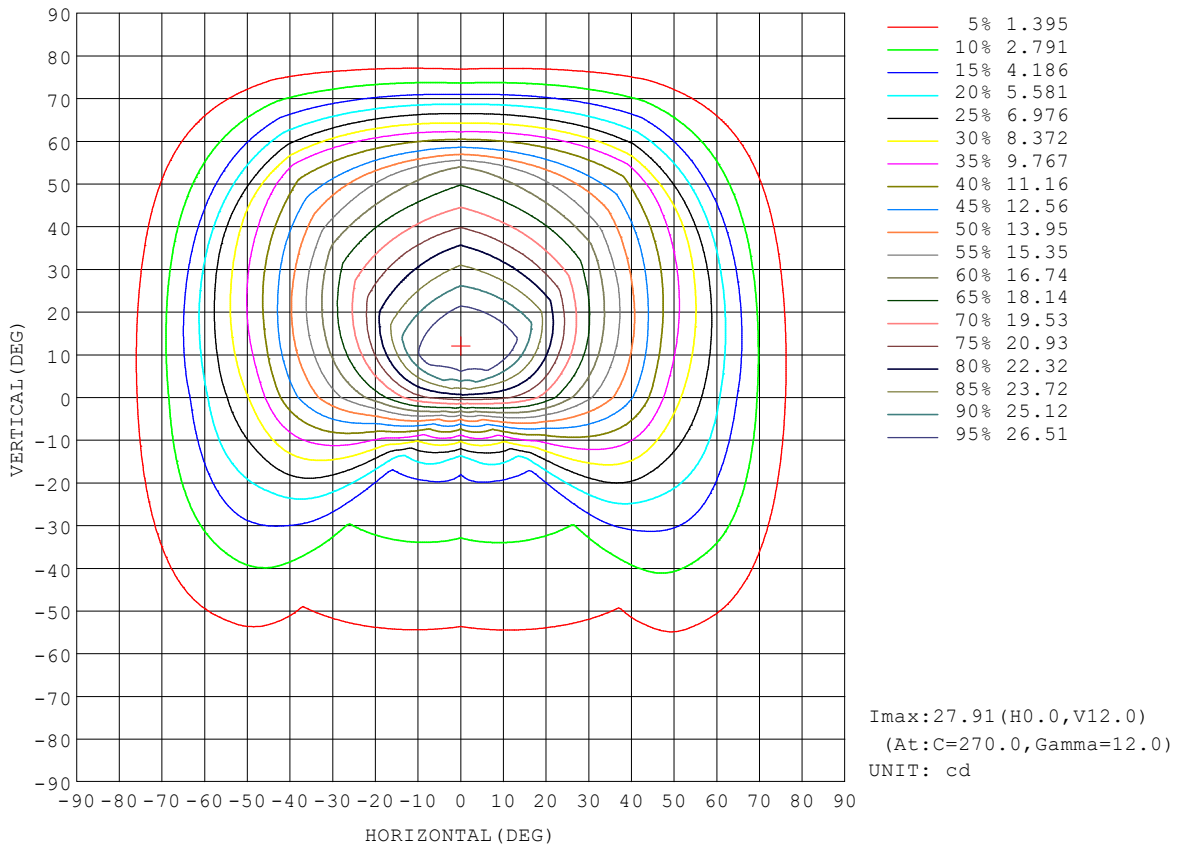
REFLECTANCE										
Ceiling	0.8	0.8	0.8	0.7	0.7	0.7	0.5	0.5	0.5	0
Walls	0.7	0.5	0.3	0.7	0.5	0.3	0.7	0.5	0.3	0
Working plane	0.2	0.2	0.2	0.2	0.2	0.2	0.2	0.2	0.2	0
ROOM INDEX	UTILIZATION FACTORS (PERCENT) $k(RI) \times RCR = 5$									
k = 0.60	61	50	43	60	49	43	59	49	43	37
0.80	71	60	53	70	60	53	68	59	53	46
1.00	79	69	62	78	69	62	76	70	62	55
1.25	86	77	70	85	76	70	82	75	69	62
1.50	91	82	76	90	81	75	87	80	74	67
2.00	98	90	84	96	89	83	93	87	82	75
2.50	101	94	89	99	93	88	96	90	86	78
3.00	104	98	93	102	97	92	98	94	90	82
4.00	108	103	99	106	101	97	101	98	95	86
5.00	110	106	102	108	104	101	103	100	98	89
ROOM INDEX	UF(total)									Direct
According to DIN EN 13032-2 2004			Suspended				SHRNOM = 1.25			

C Range: 0 - 360DEG  
 C Interval: 45.0DEG  
 Test Speed: HIGH  
 Temperature:25.3°C  
 Operators:Chen Songyu  
 Test Date:2025-12-09

γ Range: 0 - 90DEG  
 γ Interval: 1.0DEG  
 Test System:EVERFINE GO-2000H\_V1 SYSTEM V2.00.456  
 Humidity:65.0%  
 Test Distance:9.520m [K=1.0000]  
 Remarks:

ISOCANDELA DIAGRAM

Test:U:230.36V I:0.0165A P:3.2218W PF:0.8460 Freq:49.99Hz UTHDi:0.00% ITHDi:0.00% KDisp:0 Lamp Flux:42.4005x1 lm		
Name: DL195-2.5-3W-P3	Type: 3W	Weight:
SPEC.: 5700K	DIM.:	Instrument No.: HUP-IES-B3
MFR.: EVERFINE	SUR.: 0.057*0.037	shielding angle:

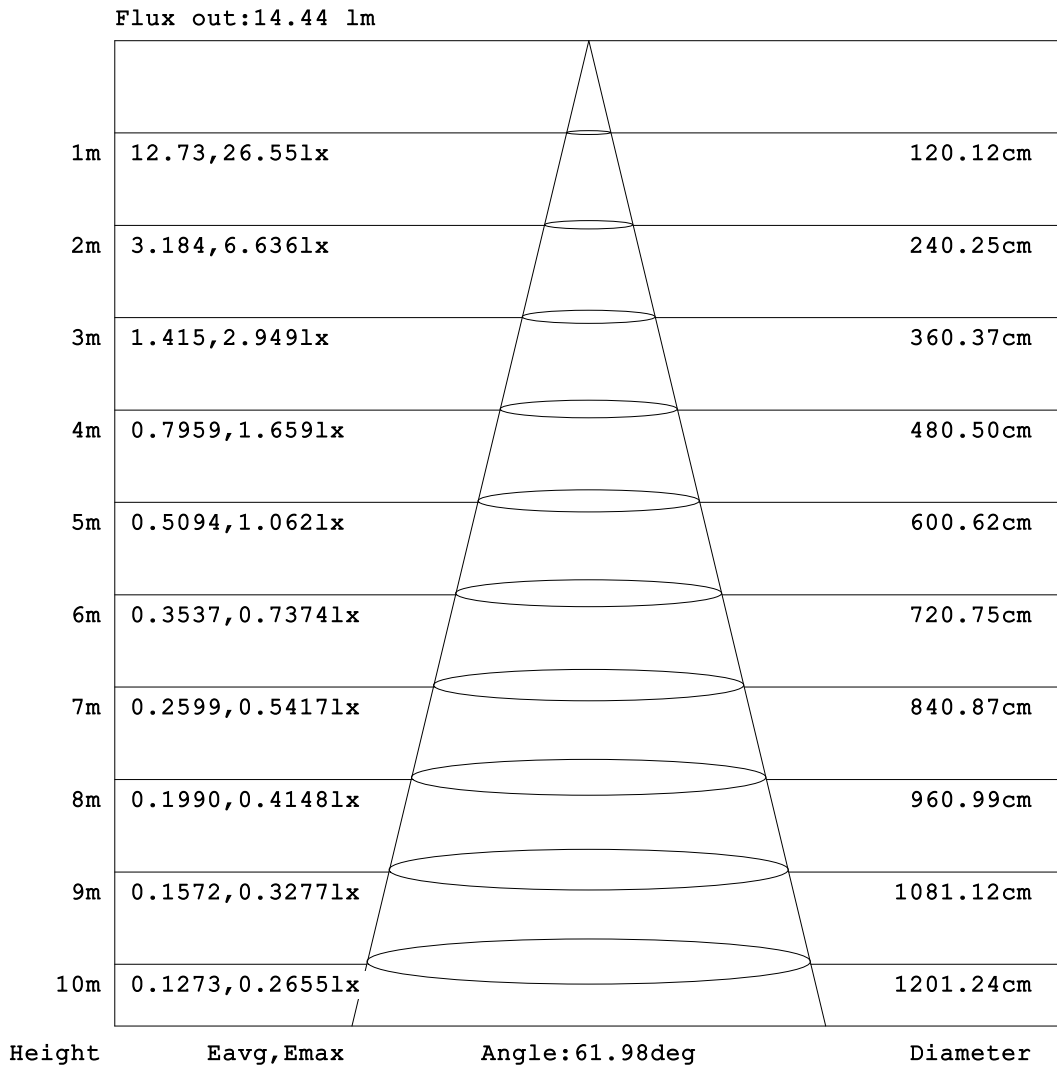


C Range: 0 - 360DEG  
 C Interval: 45.0DEG  
 Test Speed: HIGH  
 Temperature:25.3℃  
 Operators:Chen Songyu  
 Test Date:2025-12-09

γ Range: 0 - 90DEG  
 γ Interval: 1.0DEG  
 Test System:EVERFINE GO-2000H\_V1 SYSTEM V2.00.456  
 Humidity:65.0%  
 Test Distance:9.520m [K=1.0000]  
 Remarks:

**AAI Figure**

Test:U:230.36V I:0.0165A P:3.2218W PF:0.8460 Freq:49.99Hz UTHDi:0.00% ITHDi:0.00% KDisp:0 Lamp Flux:42.4005x1 lm		
Name: DL195-2.5-3W-P3	Type: 3W	Weight:
SPEC.: 5700K	DIM.:	Instrument No.: HUP-IES-B3
MFR.: EVERFINE	SUR.: 0.057*0.037	shielding angle:



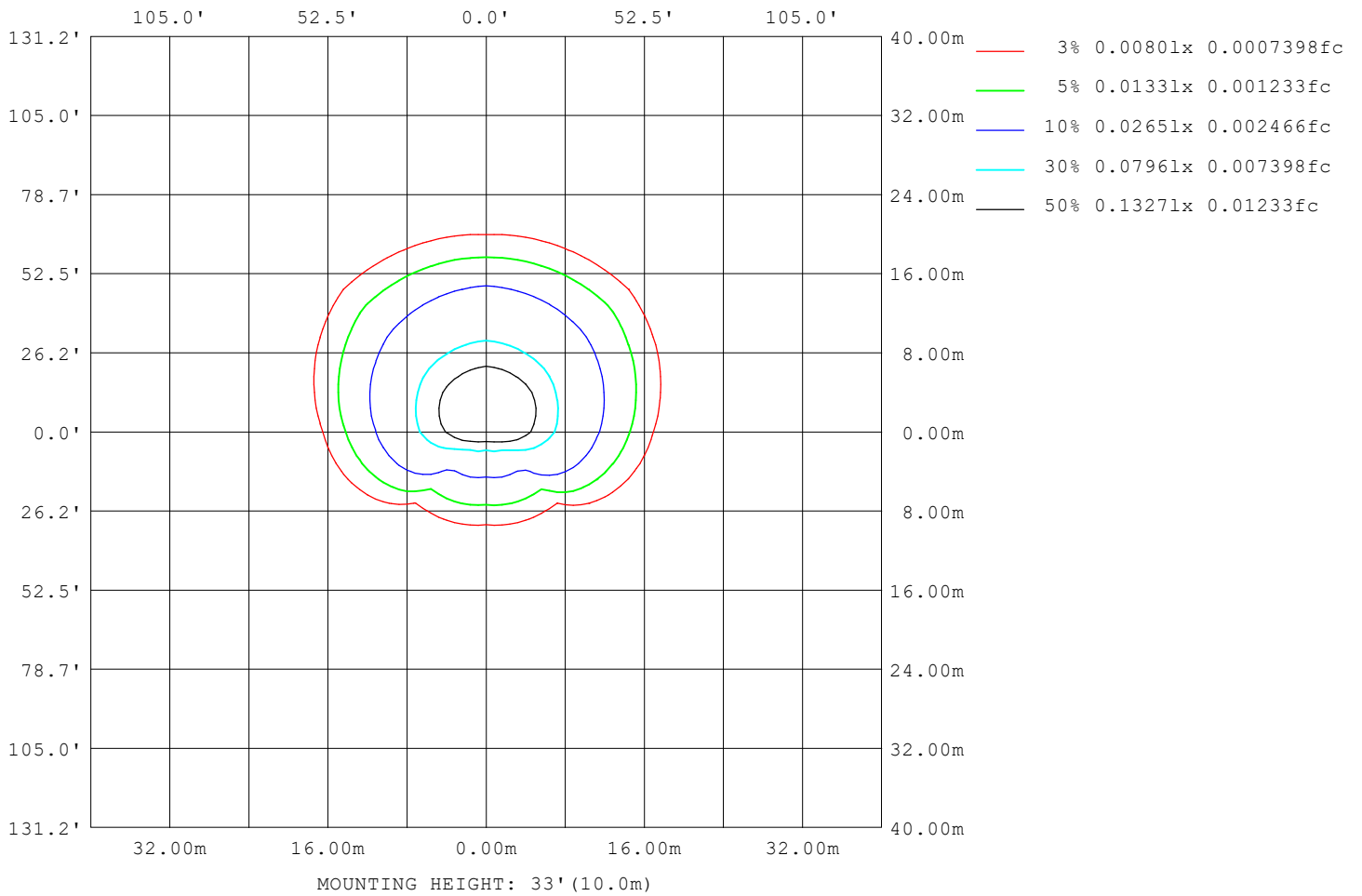
Note: The Curves indicate the illuminated area and the average illumination when the luminaire is at different distance.

C Range: 0 - 360DEG  
C Interval: 45.0DEG  
Test Speed: HIGH  
Temperature: 25.3°C  
Operators: Chen Songyu  
Test Date: 2025-12-09

γ Range: 0 - 90DEG  
γ Interval: 1.0DEG  
Test System: EVERFINE GO-2000H\_V1 SYSTEM V2.00.456  
Humidity: 65.0%  
Test Distance: 9.520m [K=1.0000]  
Remarks:

**ISOLUX DIAGRAM**

Test:U:230.36V I:0.0165A P:3.2218W PF:0.8460 Freq:49.99Hz UTHDi:0.00% ITHDi:0.00% KDisp:0 Lamp Flux:42.4005x1 lm		
Name: DL195-2.5-3W-P3	Type: 3W	Weight:
SPEC.: 5700K	DIM.:	Instrument No.: HUP-IES-B3
MFR.: EVERFINE	SUR.: 0.057*0.037	shielding angle:



C Range: 0 - 360DEG  
 C Interval: 45.0DEG  
 Test Speed: HIGH  
 Temperature:25.3°C  
 Operators:Chen Songyu  
 Test Date:2025-12-09

γ Range: 0 - 90DEG  
 γ Interval: 1.0DEG  
 Test System:EVERFINE GO-2000H\_V1 SYSTEM V2.00.456  
 Humidity:65.0%  
 Test Distance:9.520m [K=1.0000]  
 Remarks:

**LED Avg.L Report**

Test:U:230.36V I:0.0165A P:3.2218W PF:0.8460 Freq:49.99Hz UTHDi:0.00% ITHDi:0.00% KDisp:0 Lamp Flux:42.4005x1 lm		
Name: DL195-2.5-3W-P3	Type: 3W	Weight:
SPEC.: 5700K	DIM.:	Instrument No.: HUP-IES-B3
MFR.: EVERFINE	SUR.: 0.057*0.037	shielding angle:

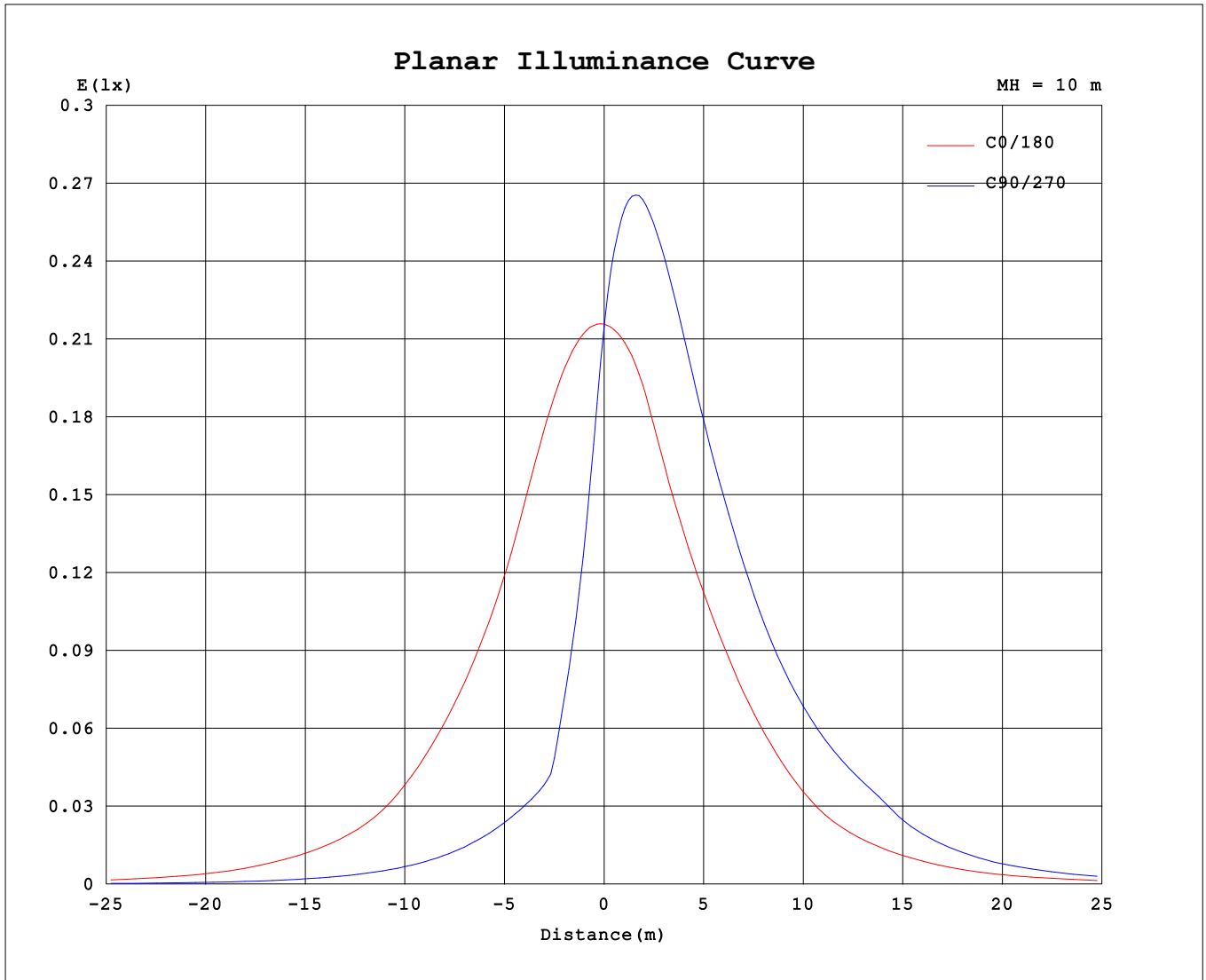
AvgL	cd/m2
L_0~180 (65) av	4427
L_0~180 (75) av	2792
L_0~180 (85) av	2070
L_90~270 (65) av	4890
L_90~270 (75) av	2342
L_90~270 (85) av	924
L_45 (65) av	5277
L_45 (75) av	3039
L_45 (85) av	1182

Standard: GB/T 29293-2012

C Range: 0 - 360DEG  
 C Interval: 45.0DEG  
 Test Speed: HIGH  
 Temperature:25.3℃  
 Operators:Chen Songyu  
 Test Date:2025-12-09

γ Range: 0 - 90DEG  
 γ Interval: 1.0DEG  
 Test System:EVERFINE GO-2000H\_V1 SYSTEM V2.00.456  
 Humidity:65.0%  
 Test Distance:9.520m [K=1.0000]  
 Remarks:

**Planar Illuminance Curve**



C Range: 0 - 360DEG  
 C Interval: 45.0DEG  
 Test Speed: HIGH  
 Temperature: 25.3 °C  
 Operators: Chen Songyu  
 Test Date: 2025-12-09

γ Range: 0 - 90DEG  
 γ Interval: 1.0DEG  
 Test System: EVERFINE GO-2000H\_V1 SYSTEM V2.00.456  
 Humidity: 65.0%  
 Test Distance: 9.520m [K=1.0000]  
 Remarks:

