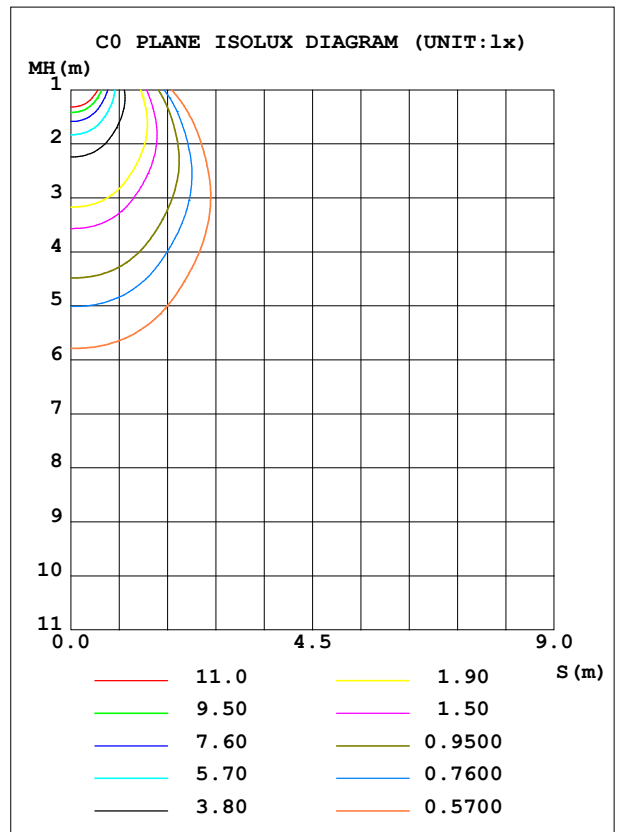
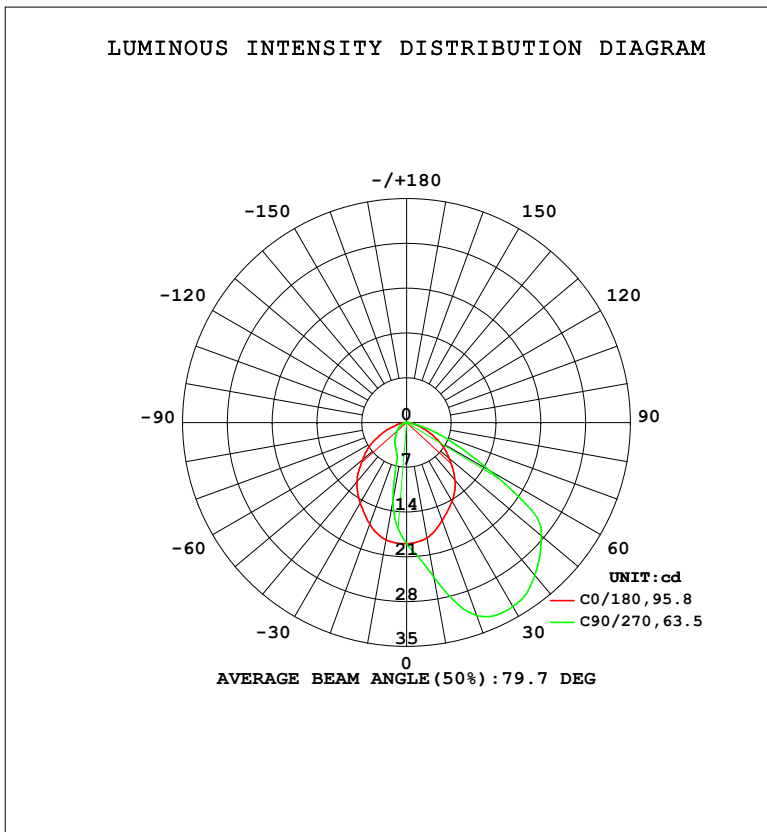


LUMINAIRE PHOTOMETRIC TEST REPORT

Test:U:230.36V I:0.0166A P:3.2352W PF:0.8457 Freq:49.99Hz		
UTHDi:0.00% ITHDi:0.00% KDisp:0 Lamp Flux:50.6873x1 lm		
Name: DL195-2.5-3W-P3	Type: 3W	Weight:
SPEC.: 3000K	DIM.:	Instrument No.: HUP-IES-B3
MFR.: EVERFINE	SUR.: 0.057*0.037	shielding angle:

DATA OF LAMP		PHOTOMETRIC DATA			
MODEL	DL195-2.5-3W-P3	Imax (cd)	33.27	S/MH (C0/180)	1.15
NOMINAL POWER (W)	3	LOR (%)	100.0	S/MH (C90/270)	2.00
RATED VOLTAGE (V)	230	TOTAL FLUX (lm)	50.687	η UP, DN (C0-180)	0.0, 21.4
NOMINAL FLUX (lm)	50.6873	CIE CLASS	DIRECT	η UP, DN (C180-360)	0.0, 78.6
LAMPS INSIDE	1	η up (%)	0.0	CIBSE SHR NOM	1.00
TEST VOLTAGE (V)	230	η down (%)	100.0	CIBSE SHR MAX	1.15



C Range: 0 - 360DEG
 C Interval: 45.0DEG
 Test Speed: HIGH
 Temperature: 25.3 °C
 Operators: Chen Songyu
 Test Date: 2025-12-09

γ Range: 0 - 90DEG
 γ Interval: 1.0DEG
 Test System: EVERFINE GO-2000H_V1 SYSTEM V2.00.456
 Humidity: 65.0%
 Test Distance: 9.520m [K=1.0000]
 Remarks:

ZONAL FLUX DIAGRAM

ZONAL FLUX DIAGRAM:

γ	C0	C45	C90	C135	C180	C225	C270	C315	γ	Φ zone	Φ total	%lum, lamp
10	18.60	15.02	12.39	14.86	18.32	21.91	24.46	22.25	0- 10	1.785	1.785	3.52,3.52
20	16.91	6.295	4.776	6.025	16.29	25.56	32.10	27.09	10- 20	4.994	6.778	13.4,13.4
30	14.51	4.239	3.639	4.218	14.22	26.14	33.19	27.96	20- 30	7.629	14.41	28.4,28.4
40	12.08	3.245	2.706	3.224	11.80	24.34	31.19	25.14	30- 40	9.507	23.92	47.2,47.2
50	8.996	2.352	1.917	2.335	8.705	20.72	27.54	21.43	40- 50	10.06	33.98	67,67
60	6.096	1.567	1.241	1.556	5.802	15.32	14.91	15.94	50- 60	8.904	42.88	84.6,84.6
70	2.991	0.8969	0.7035	0.8984	2.800	6.297	5.466	6.353	60- 70	5.451	48.33	95.4,95.4
80	1.090	0.3661	0.2852	0.3635	1.071	1.250	0.7584	1.221	70- 80	1.993	50.33	99.3,99.3
90	0.0315	0.0317	0.0436	0.0436	0.0345	0.0231	0.0203	0.0262	80- 90	0.3608	50.69	100,100
100									90-100			
110									100-110			
120									110-120			
130									120-130			
140									130-140			
150									140-150			
160									150-160			
170									160-170			
180									170-180			
DEG	LUMINOUS INTENSITY:cd									UNIT:lm		

Conical surface Flux(90deg): 28.969 lm

%lum = 57.2%

%lamp = 57.2%

Conical surface Flux(120deg): 42.883 lm

%lum = 84.6%

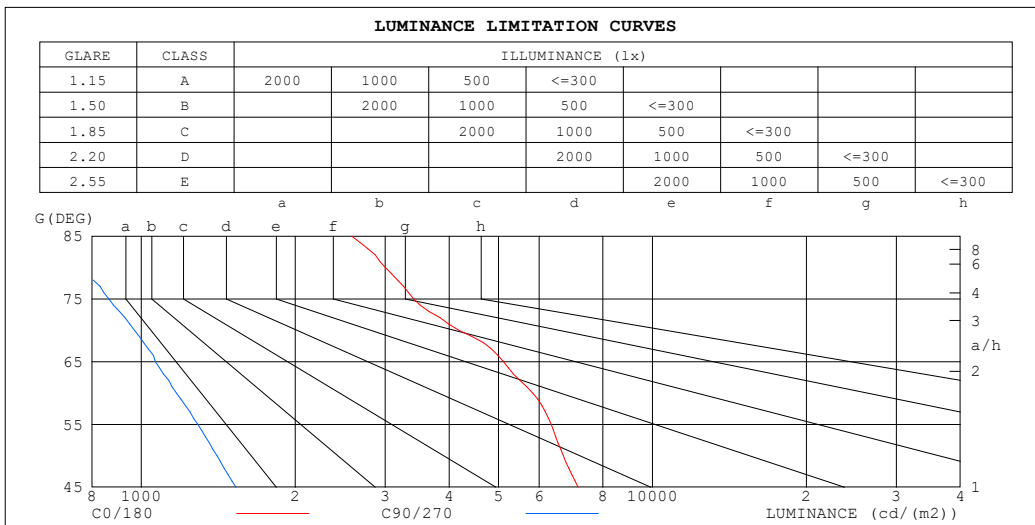
%lamp = 84.6%

C Range: 0 - 360DEG
 C Interval: 45.0DEG
 Test Speed: HIGH
 Temperature:25.3℃
 Operators:Chen Songyu
 Test Date:2025-12-09

γ Range: 0 - 90DEG
 γ Interval: 1.0DEG
 Test System:EVERFINE GO-2000H_V1 SYSTEM V2.00.456
 Humidity:65.0%
 Test Distance:9.520m [K=1.0000]
 Remarks:

LUMINANCE LIMITATION CURVES

Test:U:230.36V I:0.0166A P:3.2352W PF:0.8457 Freq:49.99Hz UTHDi:0.00% ITHDi:0.00% KDisp:0 Lamp Flux:50.6873x1 lm		
Name: DL195-2.5-3W-P3	Type: 3W	Weight:
SPEC.: 3000K	DIM.:	Instrument No.: HUP-IES-B3
MFR.: EVERFINE	SUR.: 0.057*0.037	shielding angle:



LUMINANCE cd/(m2)		
G (DEG)	C0/180	C90/270
85	2583	724
80	3004	775
75	3411	864
70	4183	971
65	5114	1065
60	5832	1171
55	6337	1290
50	6694	1407
45	7155	1531

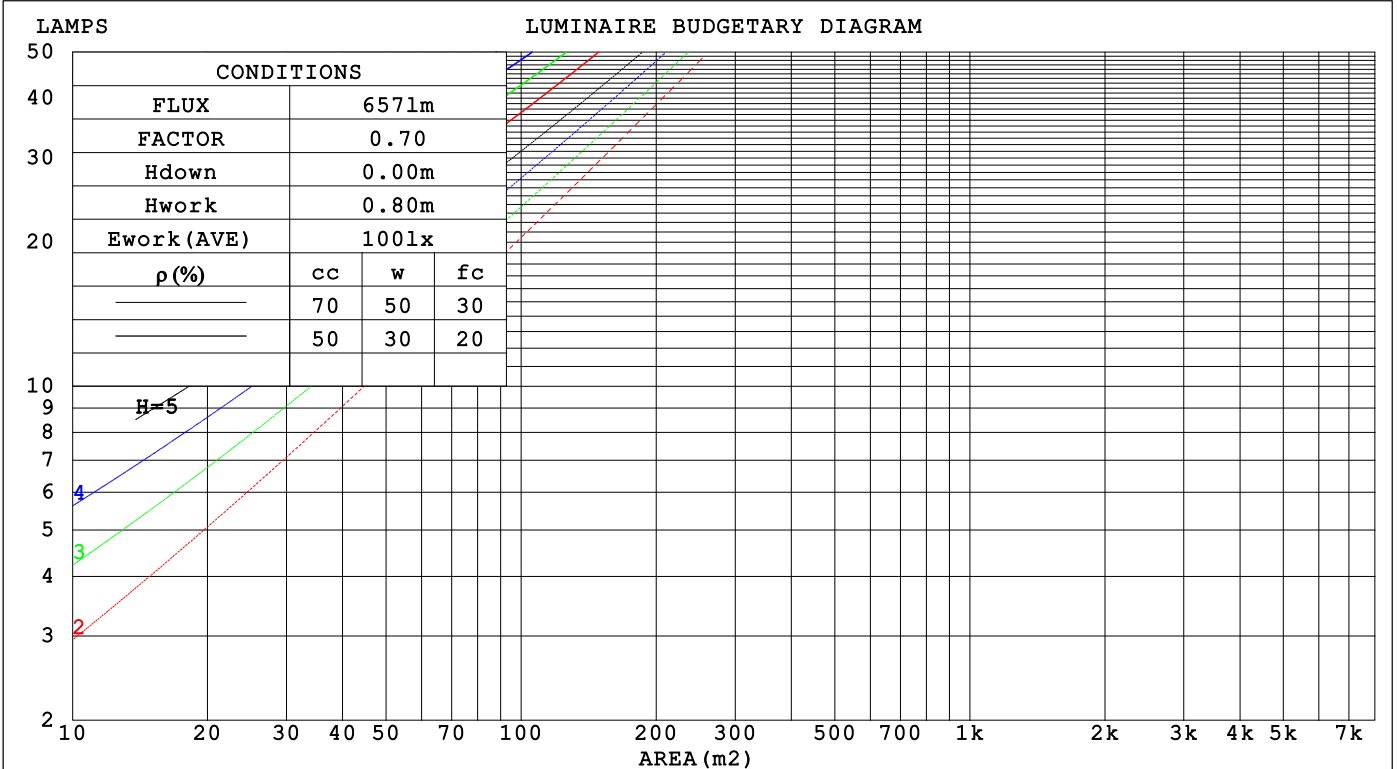
C Range: 0 - 360DEG
 C Interval: 45.0DEG
 Test Speed: HIGH
 Temperature: 25.3 °C
 Operators: Chen Songyu
 Test Date: 2025-12-09

γ Range: 0 - 90DEG
 γ Interval: 1.0DEG
 Test System: EVERFINE GO-2000H_V1 SYSTEM V2.00.456
 Humidity: 65.0%
 Test Distance: 9.520m [K=1.0000]
 Remarks:

CU AND LUMINAIRE BUDGETARY ESTIMATE DIAGRAM

Test:U:230.36V I:0.0166A P:3.2352W PF:0.8457 Freq:49.99Hz		
UTHdi:0.00% ITHdi:0.00% KDisp:0 Lamp Flux:50.6873x1 lm		
Name: DL195-2.5-3W-P3	Type: 3W	Weight:
SPEC.: 3000K	DIM.:	Instrument No.: HUP-IES-B3
MFR.: EVERFINE	SUR.: 0.057*0.037	shielding angle:

pcc	80%			70%			50%			30%			10%			0
pw	50%	30%	10%	50%	30%	10%	50%	30%	10%	50%	30%	10%	50%	30%	10%	0
pfc	20%			20%			20%			20%			20%			0
RCR	RCR:Room Cavity Ratio						Coefficients of Utilization(CU)									
0.0	1.19	1.19	1.19	1.16	1.16	1.16	1.11	1.11	1.11	1.06	1.06	1.06	1.02	1.02	1.02	1.00
1.0	1.05	1.02	.98	1.03	.90	.96	.99	.96	.93	.95	.93	.91	.92	.90	.88	.86
2.0	.93	.86	.81	.91	.85	.80	.87	.82	.78	.84	.80	.76	.81	.78	.75	.73
3.0	.82	.74	.68	.80	.73	.67	.77	.71	.66	.74	.69	.65	.72	.67	.64	.62
4.0	.72	.64	.58	.71	.63	.57	.69	.62	.56	.66	.60	.56	.64	.59	.55	.53
5.0	.65	.56	.50	.64	.55	.49	.62	.54	.49	.60	.53	.48	.58	.52	.48	.46
6.0	.58	.50	.43	.57	.49	.43	.56	.48	.43	.54	.47	.42	.52	.47	.42	.40
7.0	.53	.44	.38	.52	.44	.38	.50	.43	.38	.49	.42	.37	.48	.42	.37	.35
8.0	.48	.40	.34	.47	.39	.34	.46	.39	.34	.45	.38	.33	.44	.38	.33	.31
9.0	.44	.36	.31	.44	.36	.30	.42	.35	.30	.41	.35	.30	.40	.34	.30	.28
10.0	.41	.33	.28	.40	.33	.28	.39	.32	.27	.38	.32	.27	.37	.31	.27	.25



C Range: 0 - 360DEG
 C Interval: 45.0DEG
 Test Speed: HIGH
 Temperature:25.3°C
 Operators:Chen Songyu
 Test Date:2025-12-09

γ Range: 0 - 90DEG
 γ Interval: 1.0DEG
 Test System:EVERFINE GO-2000H_V1 SYSTEM V2.00.456
 Humidity:65.0%
 Test Distance:9.520m [K=1.0000]
 Remarks:

WEC AND CCEC

Test:U:230.36V I:0.0166A P:3.2352W PF:0.8457 Freq:49.99Hz		
UTHDi:0.00% ITHDi:0.00% KDisp:0 Lamp Flux:50.6873x1 lm		
Name: DL195-2.5-3W-P3	Type: 3W	Weight:
SPEC.: 3000K	DIM.:	Instrument No.: HUP-IES-B3
MFR.: EVERFINE	SUR.: 0.057*0.037	shielding angle:

ρ_{CC}	80%			70%			50%			30%			10%			0
ρ_w	50%	30%	10%	50%	30%	10%	50%	30%	10%	50%	30%	10%	50%	30%	10%	0
ρ_{fc}	20%			20%			20%			20%			20%			0
RCR	RCR:Room Cavity Ratio						Wall Exitance Coefficients(WEC)									
0.0																
1.0	.280	.159	.050	.273	.156	.049	.260	.149	.048	.248	.143	.046	.237	.137	.044	
2.0	.271	.148	.046	.265	.146	.045	.253	.141	.044	.243	.136	.043	.233	.132	.042	
3.0	.255	.136	.041	.250	.134	.040	.240	.130	.039	.230	.126	.039	.222	.123	.038	
4.0	.239	.124	.036	.234	.122	.036	.225	.119	.036	.216	.116	.035	.209	.113	.035	
5.0	.223	.113	.033	.218	.112	.033	.210	.109	.032	.203	.107	.032	.196	.105	.031	
6.0	.208	.104	.030	.204	.103	.030	.197	.101	.029	.190	.099	.029	.184	.097	.029	
7.0	.194	.096	.027	.191	.095	.027	.185	.093	.027	.179	.092	.027	.173	.090	.026	
8.0	.182	.089	.025	.179	.088	.025	.173	.087	.025	.168	.085	.025	.163	.084	.024	
9.0	.171	.083	.023	.169	.082	.023	.163	.081	.023	.158	.079	.023	.154	.078	.023	
10.0	.161	.077	.021	.159	.077	.021	.154	.076	.021	.150	.074	.021	.146	.073	.021	

ρ_{CC}	80%			70%			50%			30%			10%			0
ρ_w	50%	30%	10%	50%	30%	10%	50%	30%	10%	50%	30%	10%	50%	30%	10%	0
ρ_{fc}	20%			20%			20%			20%			20%			0
RCR	RCR:Room Cavity Ratio						Ceiling Cavity Exitance Coefficients(CCEC)									
0.0	.190	.190	.190	.163	.163	.163	.111	.111	.111	.064	.064	.064	.020	.020	.020	
1.0	.178	.156	.137	.153	.134	.118	.104	.092	.081	.060	.053	.047	.019	.017	.015	
2.0	.169	.132	.101	.145	.114	.087	.099	.079	.061	.057	.046	.036	.018	.015	.012	
3.0	.162	.114	.076	.139	.099	.066	.095	.068	.046	.055	.040	.027	.018	.013	.009	
4.0	.154	.101	.060	.132	.087	.052	.091	.061	.037	.053	.036	.022	.017	.012	.007	
5.0	.147	.090	.048	.126	.078	.042	.087	.055	.030	.050	.032	.018	.016	.010	.006	
6.0	.140	.082	.040	.121	.071	.035	.083	.050	.025	.048	.029	.015	.016	.010	.005	
7.0	.134	.075	.034	.115	.065	.029	.079	.046	.021	.046	.027	.012	.015	.009	.004	
8.0	.127	.069	.029	.110	.060	.025	.076	.042	.018	.044	.025	.011	.014	.008	.004	
9.0	.122	.064	.026	.105	.056	.022	.073	.039	.016	.042	.023	.009	.014	.008	.003	
10.0	.116	.060	.023	.100	.052	.020	.069	.037	.014	.040	.022	.008	.013	.007	.003	

C Range: 0 - 360DEG
 C Interval: 45.0DEG
 Test Speed: HIGH
 Temperature:25.3℃
 Operators:Chen Songyu
 Test Date:2025-12-09

γ Range: 0 - 90DEG
 γ Interval: 1.0DEG
 Test System:EVERFINE GO-2000H_V1 SYSTEM V2.00.456
 Humidity:65.0%
 Test Distance:9.520m [K=1.0000]
 Remarks:

UGR(Unified Glare Rating) Table

Test:U:230.36V I:0.0166A P:3.2352W PF:0.8457 Freq:49.99Hz UTHDi:0.00% ITHDi:0.00% KDisp:0 Lamp Flux:50.6873x1 lm		
Name: DL195-2.5-3W-P3	Type: 3W	Weight:
SPEC.: 3000K	DIM.:	Instrument No.: HUP-IES-B3
MFR.: EVERFINE	SUR.: 0.057*0.037	shielding angle:

ceiling/cavity	0.7	0.7	0.5	0.5	0.3	0.7	0.7	0.5	0.5	0.3
walls	0.5	0.3	0.5	0.3	0.3	0.5	0.3	0.5	0.3	0.3
working plane	0.2	0.2	0.2	0.2	0.2	0.2	0.2	0.2	0.2	0.2

Room dimensions	Viewed crosswise					Viewed endwise				
x = 2H y = 2H	16.3	17.7	16.5	17.9	18.1	8.5	10.0	8.7	10.2	10.4
3H	17.6	19.0	17.9	19.2	19.4	9.5	10.9	9.8	11.1	11.3
4H	18.0	19.3	18.3	19.6	19.8	9.9	11.2	10.2	11.4	11.7
6H	18.4	19.6	18.7	19.8	20.1	10.2	11.4	10.5	11.6	11.9
8H	18.5	19.6	18.8	19.9	20.2	10.3	11.4	10.6	11.7	12.0
12H	18.5	19.6	18.9	19.9	20.2	10.3	11.4	10.7	11.7	12.0
4H 2H	16.1	17.4	16.4	17.6	17.9	9.6	10.9	10.0	11.2	11.4
3H	17.6	18.7	18.0	19.0	19.3	10.7	11.8	11.1	12.1	12.4
4H	18.2	19.2	18.5	19.5	19.8	11.2	12.2	11.5	12.5	12.8
6H	18.6	19.5	19.0	19.9	20.2	11.5	12.4	11.9	12.8	13.1
8H	18.8	19.6	19.2	20.0	20.4	11.6	12.5	12.1	12.8	13.2
12H	18.9	19.7	19.4	20.1	20.5	11.7	12.5	12.1	12.9	13.3
8H 4H	18.1	18.9	18.5	19.3	19.7	11.7	12.5	12.1	12.9	13.2
6H	18.7	19.3	19.1	19.7	20.2	12.1	12.8	12.6	13.2	13.6
8H	18.9	19.5	19.4	19.9	20.4	12.3	12.9	12.8	13.3	13.8
12H	19.1	19.6	19.6	20.1	20.5	12.4	13.0	12.9	13.4	13.9
12H 4H	18.1	18.8	18.5	19.2	19.6	11.8	12.5	12.2	12.9	13.3
6H	18.6	19.2	19.1	19.7	20.1	12.3	12.9	12.7	13.3	13.7
8H	18.9	19.4	19.4	19.8	20.3	12.5	13.0	12.9	13.4	13.9

Variations with the observer position at spacings(CIE Pub.117):		
S = 1.0H	+ 0.4 / - 0.2	+ 0.3 / - 0.4
1.5H	+ 1.0 / - 1.0	+ 0.1 / - 0.3
2.0H	+ 1.8 / - 2.2	+ 0.4 / - 0.7

CIE Pub.117, 50.69 lm Total Lamp Luminous Flux Corrected (8log(F/F0) = -10.4)
 Area: 0.002109 m2

C Range: 0 - 360DEG	γ Range: 0 - 90DEG
C Interval: 45.0DEG	γ Interval: 1.0DEG
Test Speed: HIGH	Test System:EVERFINE GO-2000H_V1 SYSTEM V2.00.456
Temperature:25.3℃	Humidity:65.0%
Operators:Chen Songyu	Test Distance:9.520m [K=1.0000]
Test Date:2025-12-09	Remarks:

UTILIZATION FACTORS TABLE

Test:U:230.36V I:0.0166A P:3.2352W PF:0.8457 Freq:49.99Hz UTHDi:0.00% ITHDi:0.00% KDisp:0 Lamp Flux:50.6873x1 lm		
Name: DL195-2.5-3W-P3	Type: 3W	Weight:
SPEC.: 3000K	DIM.:	Instrument No.: HUP-IES-B3
MFR.: EVERFINE	SUR.: 0.057*0.037	shielding angle:

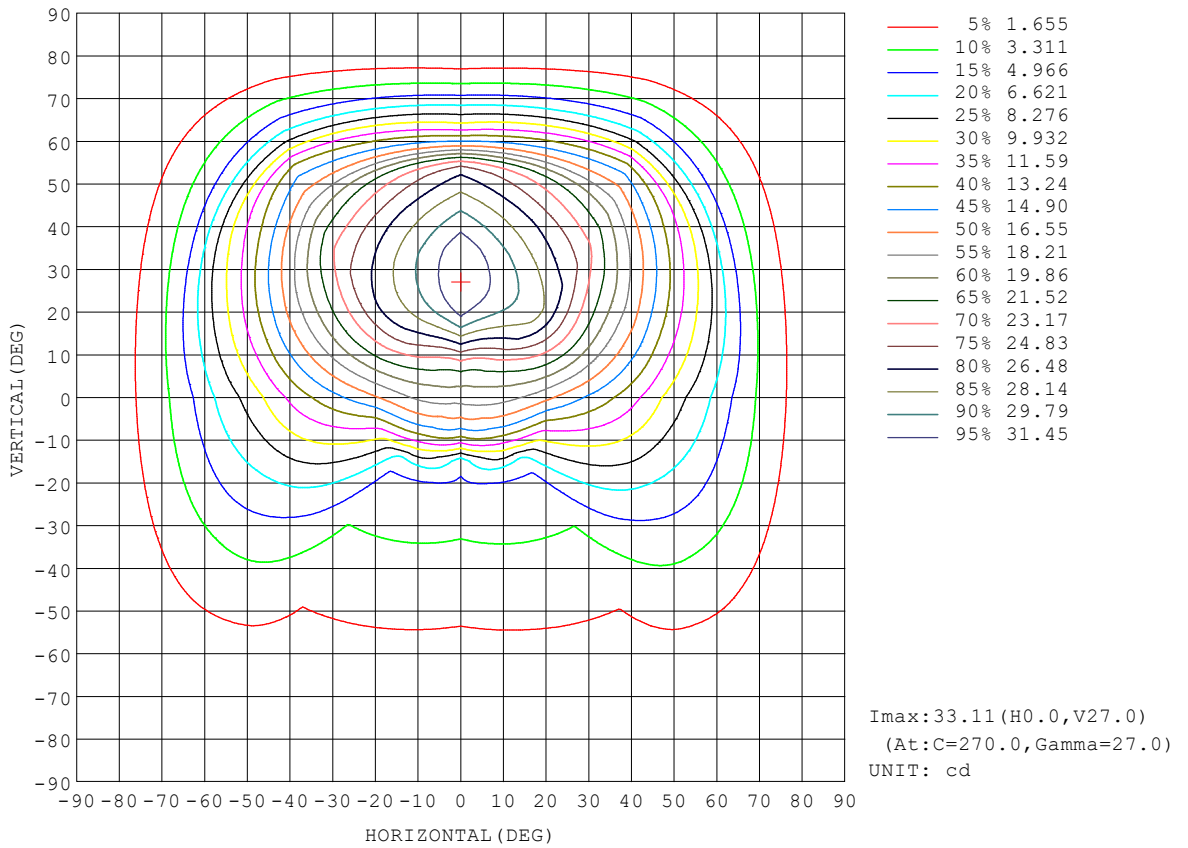
REFLECTANCE										
Ceiling	0.8	0.8	0.8	0.7	0.7	0.7	0.5	0.5	0.5	0
Walls	0.7	0.5	0.3	0.7	0.5	0.3	0.7	0.5	0.3	0
Working plane	0.2	0.2	0.2	0.2	0.2	0.2	0.2	0.2	0.2	0
ROOM INDEX	UTILIZATION FACTORS (PERCENT) $k(RI) \times RCR = 5$									
k = 0.60	58	47	40	58	47	40	57	46	40	33
0.80	69	58	51	68	57	50	66	56	50	43
1.00	78	67	60	77	67	60	75	68	59	53
1.25	85	75	68	84	75	68	81	73	67	60
1.50	90	81	74	89	80	74	86	78	73	66
2.00	97	89	83	95	88	82	92	86	81	73
2.50	101	93	88	99	92	87	95	89	85	77
3.00	104	98	92	102	96	91	98	93	89	81
4.00	108	102	98	105	101	97	101	97	94	85
5.00	110	105	102	107	103	100	103	100	97	88
ROOM INDEX	UF(total)									Direct
According to DIN EN 13032-2 2004			Suspended				SHRNOM = 1.25			

C Range: 0 - 360DEG
 C Interval: 45.0DEG
 Test Speed: HIGH
 Temperature:25.3°C
 Operators:Chen Songyu
 Test Date:2025-12-09

γ Range: 0 - 90DEG
 γ Interval: 1.0DEG
 Test System:EVERFINE GO-2000H_V1 SYSTEM V2.00.456
 Humidity:65.0%
 Test Distance:9.520m [K=1.0000]
 Remarks:

ISOCANDELA DIAGRAM

Test:U:230.36V I:0.0166A P:3.2352W PF:0.8457 Freq:49.99Hz UTHDi:0.00% ITHDi:0.00% KDisp:0 Lamp Flux:50.6873x1 lm		
Name: DL195-2.5-3W-P3	Type: 3W	Weight:
SPEC.: 3000K	DIM.:	Instrument No.: HUP-IES-B3
MFR.: EVERFINE	SUR.: 0.057*0.037	shielding angle:

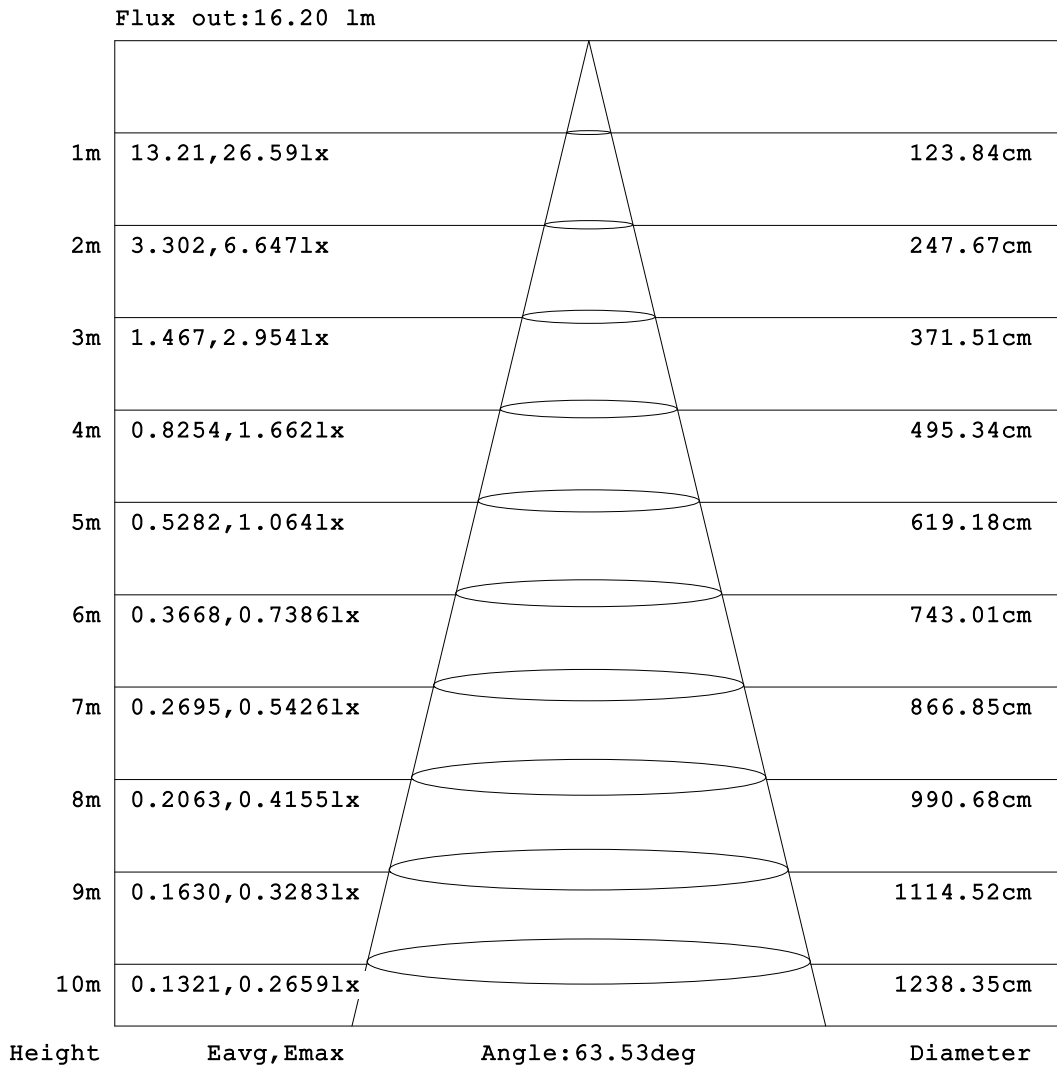


C Range: 0 - 360DEG
 C Interval: 45.0DEG
 Test Speed: HIGH
 Temperature:25.3℃
 Operators:Chen Songyu
 Test Date:2025-12-09

γ Range: 0 - 90DEG
 γ Interval: 1.0DEG
 Test System:EVERFINE GO-2000H_V1 SYSTEM V2.00.456
 Humidity:65.0%
 Test Distance:9.520m [K=1.0000]
 Remarks:

AAI Figure

Test:U:230.36V I:0.0166A P:3.2352W PF:0.8457 Freq:49.99Hz UTHDi:0.00% ITHDi:0.00% KDisp:0 Lamp Flux:50.6873x1 lm		
Name: DL195-2.5-3W-P3	Type: 3W	Weight:
SPEC.: 3000K	DIM.:	Instrument No.: HUP-IES-B3
MFR.: EVERFINE	SUR.: 0.057*0.037	shielding angle:



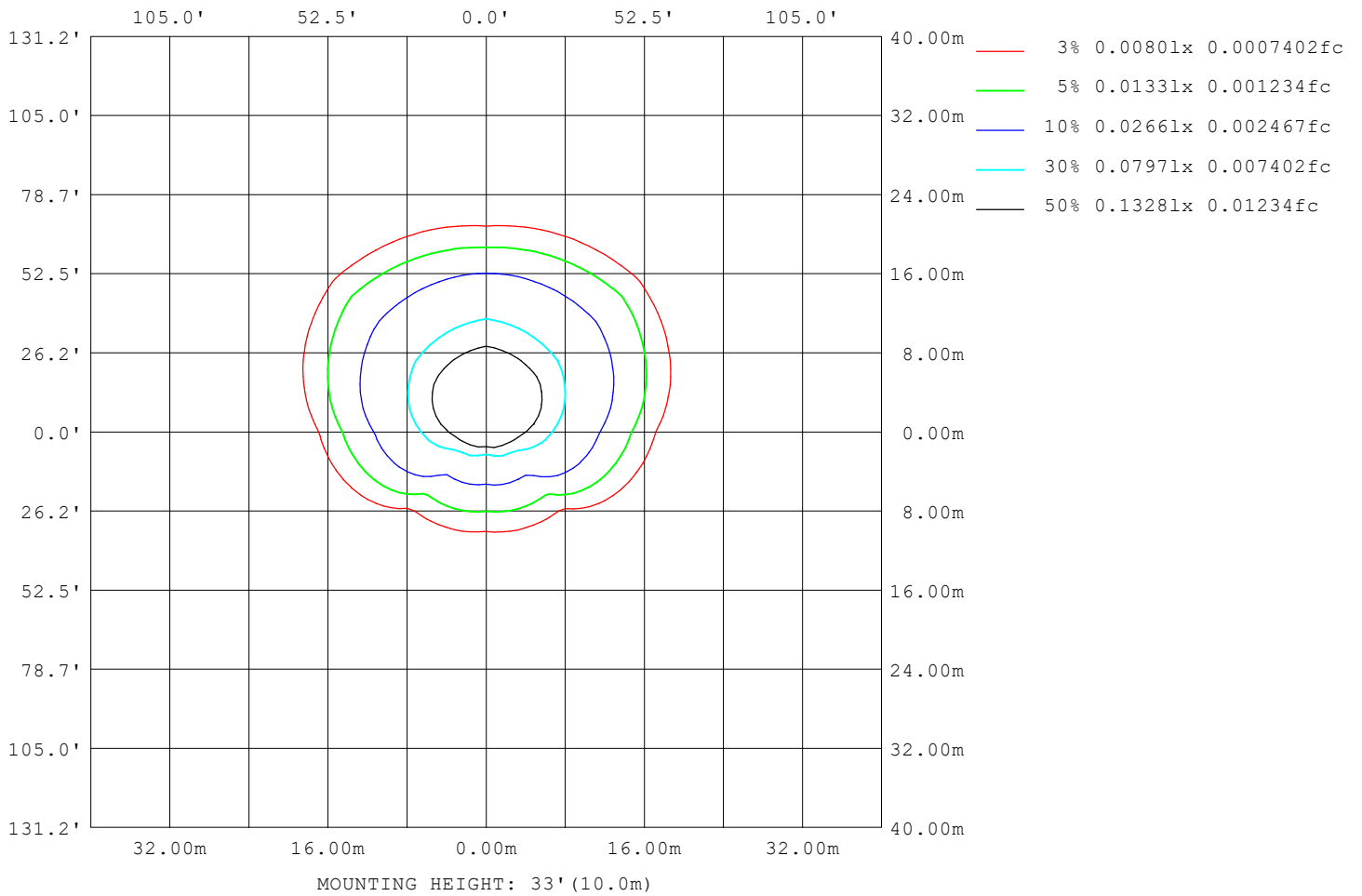
Note: The Curves indicate the illuminated area and the average illumination when the luminaire is at different distance.

C Range: 0 - 360DEG
 C Interval: 45.0DEG
 Test Speed: HIGH
 Temperature: 25.3°C
 Operators: Chen Songyu
 Test Date: 2025-12-09

γ Range: 0 - 90DEG
 γ Interval: 1.0DEG
 Test System: EVERFINE GO-2000H_V1 SYSTEM V2.00.456
 Humidity: 65.0%
 Test Distance: 9.520m [K=1.0000]
 Remarks:

ISOLUX DIAGRAM

Test:U:230.36V I:0.0166A P:3.2352W PF:0.8457 Freq:49.99Hz UTHDi:0.00% ITHDi:0.00% KDisp:0 Lamp Flux:50.6873x1 lm		
Name: DL195-2.5-3W-P3	Type: 3W	Weight:
SPEC.: 3000K	DIM.:	Instrument No.: HUP-IES-B3
MFR.: EVERFINE	SUR.: 0.057*0.037	shielding angle:



C Range: 0 - 360DEG
 C Interval: 45.0DEG
 Test Speed: HIGH
 Temperature:25.3°C
 Operators:Chen Songyu
 Test Date:2025-12-09

γ Range: 0 - 90DEG
 γ Interval: 1.0DEG
 Test System:EVERFINE GO-2000H_V1 SYSTEM V2.00.456
 Humidity:65.0%
 Test Distance:9.520m [K=1.0000]
 Remarks:

LED Avg.L Report

Test:U:230.36V I:0.0166A P:3.2352W PF:0.8457 Freq:49.99Hz UTHDi:0.00% ITHDi:0.00% KDisp:0 Lamp Flux:50.6873x1 lm		
Name: DL195-2.5-3W-P3	Type: 3W	Weight:
SPEC.: 3000K	DIM.:	Instrument No.: HUP-IES-B3
MFR.: EVERFINE	SUR.: 0.057*0.037	shielding angle:

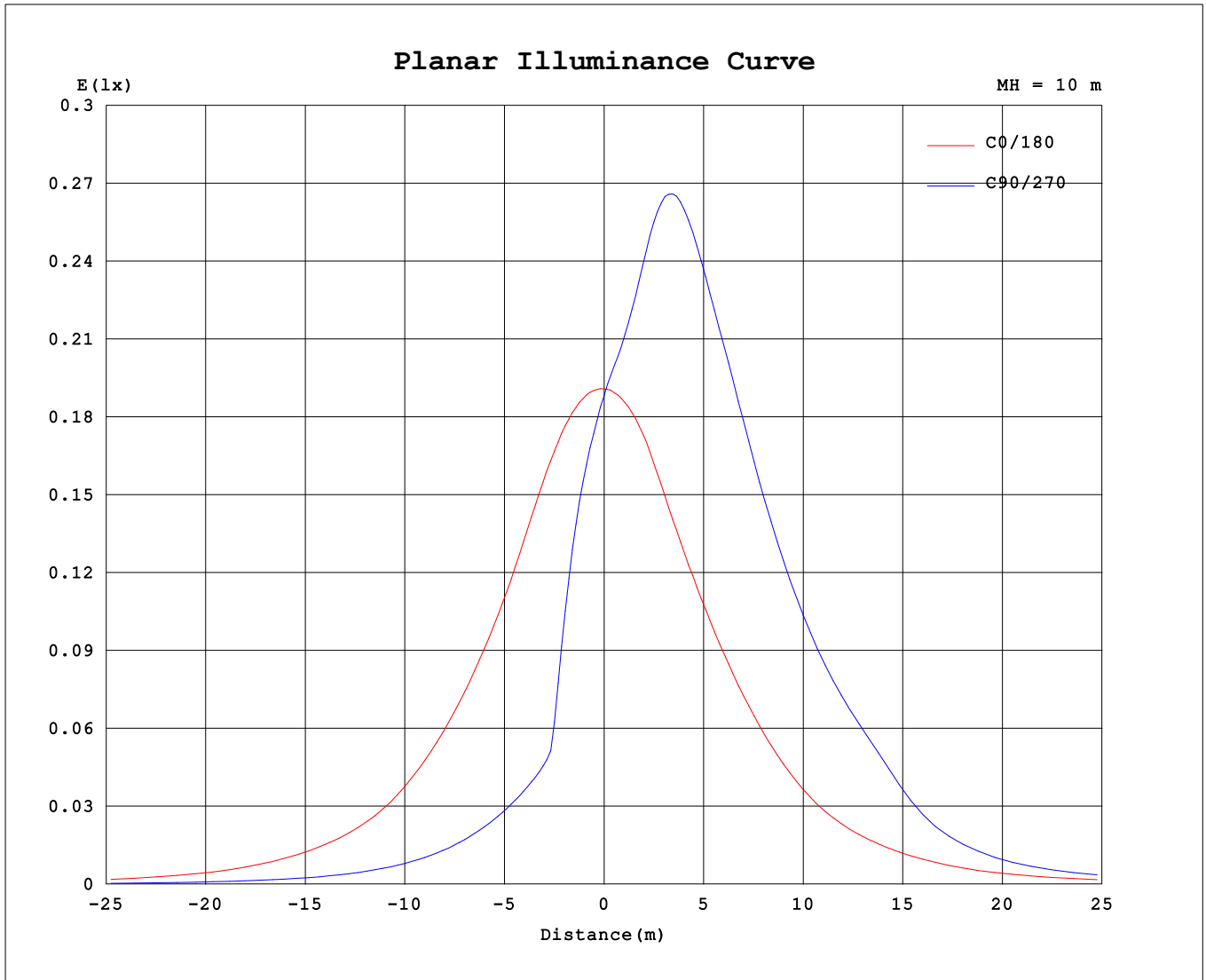
AvgL	cd/m2
L_0~180 (65) av	4914
L_0~180 (75) av	3345
L_0~180 (85) av	2505
L_90~270 (65) av	5756
L_90~270 (75) av	2764
L_90~270 (85) av	1122
L_45 (65) av	7051
L_45 (75) av	3616
L_45 (85) av	1438

Standard: GB/T 29293-2012

C Range: 0 - 360DEG
 C Interval: 45.0DEG
 Test Speed: HIGH
 Temperature:25.3℃
 Operators:Chen Songyu
 Test Date:2025-12-09

γ Range: 0 - 90DEG
 γ Interval: 1.0DEG
 Test System:EVERFINE GO-2000H_V1 SYSTEM V2.00.456
 Humidity:65.0%
 Test Distance:9.520m [K=1.0000]
 Remarks:

Planar Illuminance Curve



C Range: 0 - 360DEG
 C Interval: 45.0DEG
 Test Speed: HIGH
 Temperature: 25.3 °C
 Operators: Chen Songyu
 Test Date: 2025-12-09

γ Range: 0 - 90DEG
 γ Interval: 1.0DEG
 Test System: EVERFINE GO-2000H_V1 SYSTEM V2.00.456
 Humidity: 65.0%
 Test Distance: 9.520m [K=1.0000]
 Remarks:

