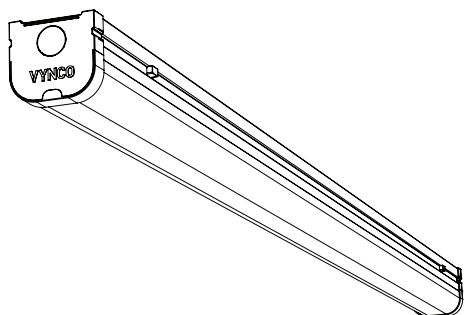


### OLSEN545E - 5FT EMERGENCY DUAL COLOUR INTERIOR BATTEN



#### SPECIFICATIONS

Input Voltage	100 - 240V AC
Power	50W
Lumens	5800 - 6000lm
Emergency Power	4W
Emergency Lumens	460lm
LED Lifetime Hours	50,000
Emergency Run Time	3 Hours
Battery Pack	Lithium Iron Phosphate Battery Pack 6.4V 3Ah
Temperature Range	-20 to 45°C
Colour Temperature	4000K / 5700K
IK Rating	IK08
Dimensions	1500 x 71 x 63mm

#### WARRANTY

This product is covered by the standard 3 Year Vynco Warranty - proof of purchase is required. Please contact Vynco for details of returns procedure.

**NOTE:** This product contains NO user serviceable parts.

#### SAFETY

Turn off power before installation or before doing any maintenance work.

Turn off power before setting or changing CCT colour mode switch.

Do not install any luminaire near a heat source.

For indoor use only. Do not install this luminaire in damp or wet locations.

Do not exceed the nominal supply voltage or amperage ratings.

Take care not to pull any electrical wires during unpacking as this may damage the connection.

Lay out all the components on a smooth surface and make sure there are no components missing before assembling.

To avoid injury or damage to the fitting, please ensure that power leads and screws are secure before connecting the power.

This product should be installed by a suitably qualified person in accordance with Australian and New Zealand wiring rules.

#### EMERGENCY TEST PROCEDURE

1. L - LIVE is off
2. LSW - EMERGENCY is live
3. The green LED indicator will be ON
4. Press the TEST BUTTON to test the function of the emergency light. The light should turn ON and remain ON while the TEST BUTTON is pressed. The green LED indicator will turn off while the TEST BUTTON is pressed.

#### VYNCO INDUSTRIES (NZ) LIMITED

##### CHRISTCHURCH

388 Tuam Street, Phillipstown, Christchurch, 8011  
PO Box 9022, Tower Junction, Christchurch 8149  
New Zealand  
P +64 3 379 9283 F +64 3 379 6838  
E sales@vynco.co.nz

**VYNCO.CO.NZ**

##### AUCKLAND

9 Levene Place, Mount Wellington  
PO Box 12 249, Penrose, Auckland 1061  
New Zealand  
P +64 9 525 6051 F +64 9 525 5799

### OLSEN545E - 5FT EMERGENCY DUAL COLOUR INTERIOR BATTEN

#### INSTALLATION PROCEDURE

##### STEP 1

Isolate mains power.

##### STEP 2

Press snap-on buttons and remove diffuser.

##### STEP 3

Unplug power connection.

##### STEP 4

Feed mains cable through grommet in base tray / conduit side entry according to desired application.

##### STEP 5

Mark and drill fixing holes.

##### STEP 6

Securely fix base to the ceiling.

##### STEP 7

Terminate mains cable into terminal block and securely clamp.

##### STEP 8

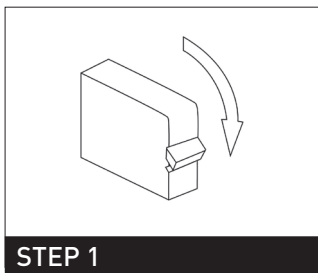
Connect the DC plug, select colour temperature.

##### STEP 9

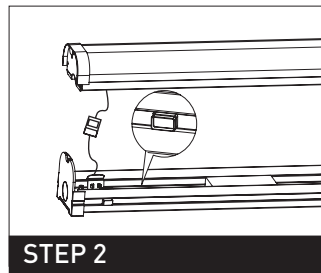
Fix cover to base and ensure all 4 clips engage.

##### STEP 10

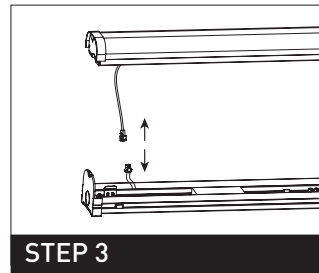
Restore mains power and test to ensure correct operation.



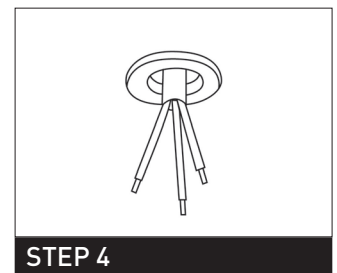
STEP 1



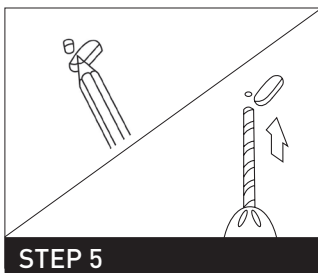
STEP 2



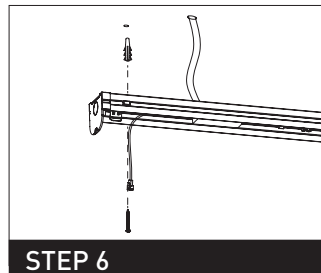
STEP 3



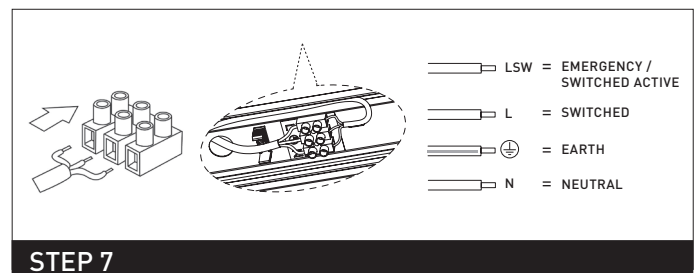
STEP 4



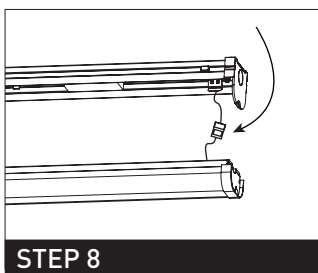
STEP 5



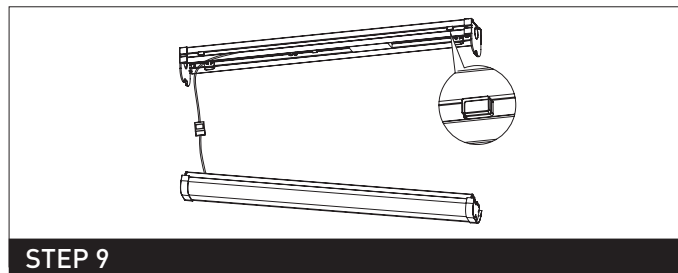
STEP 6



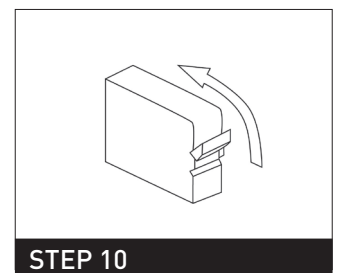
STEP 7



STEP 8



STEP 9



STEP 10