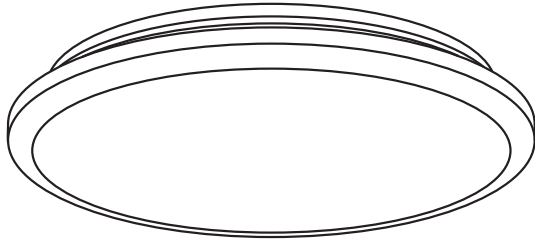


LOC275 / LOC350 - OCEAN LED ROUND OYSTER LIGHT



SAFETY

This product shall be installed by a qualified electrician in accordance with the AS/NZS Wiring Rules.

- Turn off power supply before installation or before doing any maintenance work.
- Switch on only after complete installation and examination of the circuit.
- Do not install any luminaire near the heat source.
- IP54 can be used in damp locations - it is not fully weatherproof.
- Do not exceed the nominal supply voltage.
- Take care not to pull out any electrical wires during unpacking as this may damage the connection.
- Lay out all the components on a smooth surface and make sure there are no components missing before assembling.
- To avoid injury or damage to the fitting, please ensure that power leads and screws are secure before connecting the power.
- Please keep instructions for future reference.

OCEAN - SPECIFICATIONS

Rated Operational Voltage	100-240V AC 50Hz
Colour Temperature	3000K / 4000K / 5700K
IP Rating (Front Body)	IP54
IK Rating	IK08
Material	Polycarbonate
Other specifications such as wattage & lumen output refer to the Ocean Oyster range specifications on our website at www.vynco.co.nz	

LOC275 DIMENSIONS

Diameter	Ø 275mm
Depth	48mm

LOC350 DIMENSIONS

Diameter	Ø 350mm
Depth	48mm

WARNING

1. Ensure that the power supply is isolated prior to any installation or maintenance work.
2. Switch on only after complete installation and examination of the circuit.
3. All wiring and installation of the light fitting must adhere to AS/NZS 3000 wiring rules and undertaken by a qualified electrician.



WARRANTY

The Ocean Oyster light is guaranteed for 3 years from the date of purchase.

This warranty protects against defects in workmanship and material. Any defects will be rectified by replacement if the goods are returned to place of purchase, with proof of purchase, and with a brief explanation of the experienced fault.

The warranty does not include compensation for any associated expenses involving installation or removal, such as labour or travel.

This warranty becomes null and void if, in our opinion, the product has been misused, tampered with, incorrectly installed, or subjected to power surges.

VYNCO INDUSTRIES (NZ) LIMITED

CHRISTCHURCH

388 Tuam Street, Phillipstown, Christchurch, 8011
 PO Box 9022, Tower Junction, Christchurch 8149
 New Zealand
 P +64 3 379 9283
 E sales@vynco.co.nz

VYNCO.CO.NZ

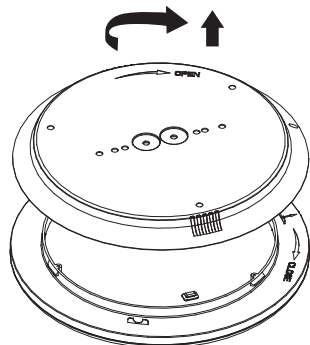
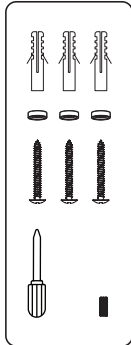
AUCKLAND

9 Levene Place, Mount Wellington
 PO Box 12 249, Penrose, Auckland 1061
 New Zealand
 P +64 9 525 6051

LOC275 / LOC350 - OCEAN LED ROUND OYSTER LIGHT

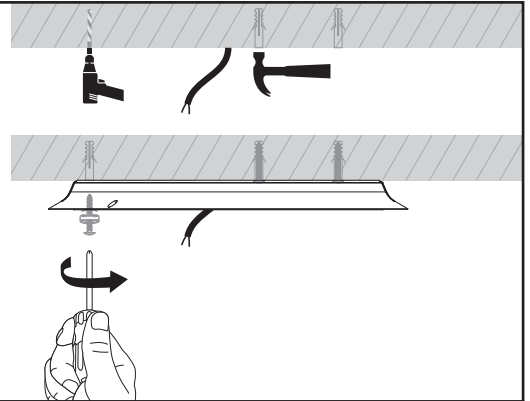
STEP 1

Separate the base and cover.
Screwdriver not supplied.

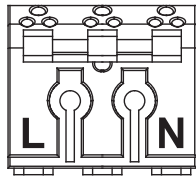


STEP 2

Pre-drill the mounting hole position and secure with fasteners provided in the accessory kit.

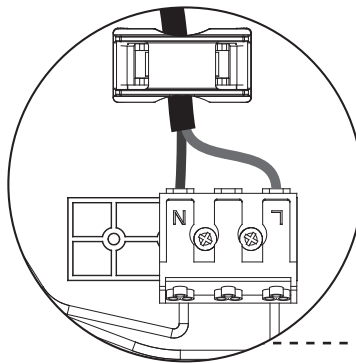


STEP 3



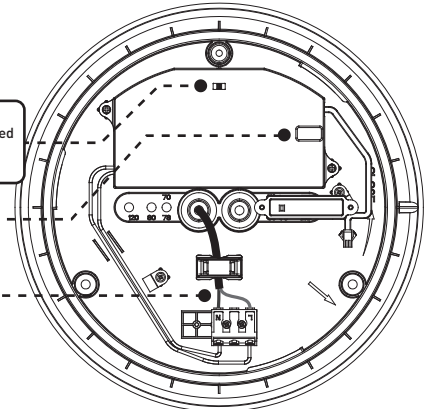
L = Active
Brown/Red

N = Neutral
Blue/Black



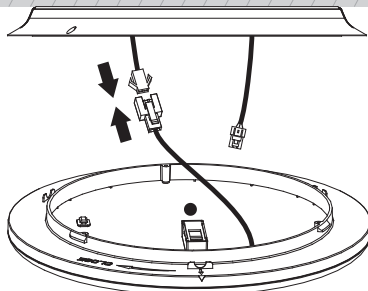
Adjust CCT and wattage accordingly to suit desired colour temperature and brightness.

Select initial power

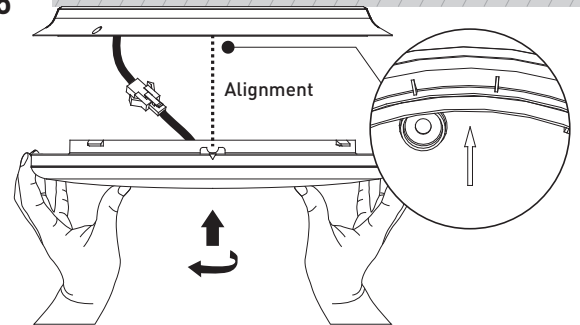


STEP 4

Secure the pigtail connection.

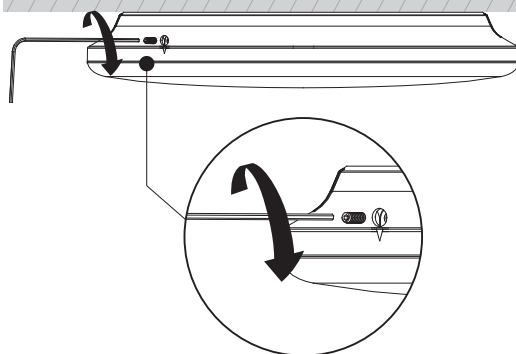


STEP 5



STEP 6

Lock product into place once secured.



COMPLETE