

VYNCO LIGHTING

INSTALLATION INSTRUCTIONS AND SPECIFICATIONS for VE3C IC-4 rated LED Downlight

INSTALLATION & USE INSTRUCTIONS:

This product should only be installed by a licenced electrician in compliance with the requirements set out in AS/NZS 60598.2.2:2016 incorporating New Zealand only Amendment A.

The face of this product is rated IP54 and so is suitable for indoor areas including bathrooms and covered/sheltered areas such as porches. The driver is rated IP40.

Wiring Instructions: L = Phase; N = Neutral

- Ensure desired location is suitable and clear of all obstructions.
- Select the desired colour temperature before installation
- Cut hole with suitable tool - check hole size before cutting
- After ensuring circuit is isolated, terminate wiring in an approved manner
- Hold back the spring clips to insert in cut-out
- Release the clips and centre the fixture
- Energise and test.

DIMMERS:

For optimal results, use Digital LED Dimmer - VT1D450LSWE

Other approved dimmers: Vynco, Clipsal, HPM and PDL trailing edge dimmers and C-bus compatible.

WARRANTY:

3 Year Warranty - proof of purchase is required.

RISK OF FIRE - Required clearance from structural members and building elements	SCB = 0mm	MIC = 0mm
	HCB = 0mm	SCI = 0mm

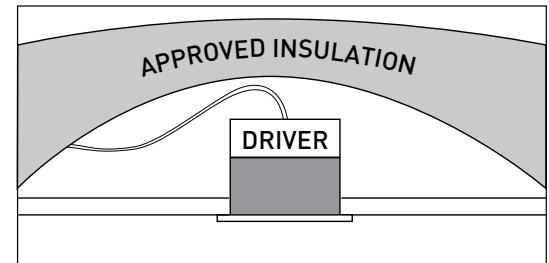
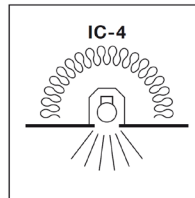
CLEARANCES FROM COMBUSTIBLE MATERIAL:

This luminaire has been independently tested and is rated for IC-4 installation.

This product is suitable for use with building insulation that can safely be continually exposed to temperatures up to 90°C and must withstand a 30s needle flame test carried out in accordance with AS/NZS 60695.11.5 with the flame applied to all surfaces of the sample.

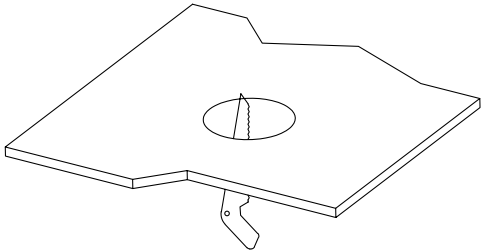
Loose fill insulation as defined in NZS 4246 is not permitted to abut or cover this luminaire.

For details on suitable insulation materials please visit our website:
www.vynco-lighting.co.nz/technical/

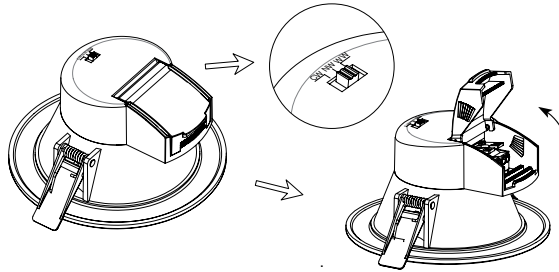


VYNCO LIGHTING

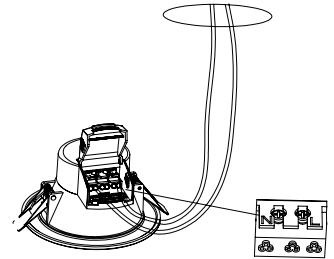
INSTALLATION INSTRUCTIONS AND SPECIFICATIONS for VE3C IC-4 rated LED Downlight



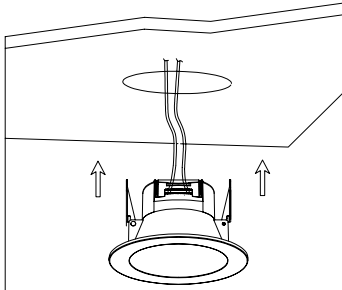
1. Cut a hole in the desired location according to product label



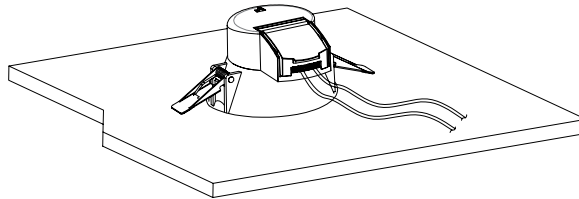
2. Open the quick connect terminal cover, ensure the correct colour temperature has been selected with the sliding toggle switch.



3. Terminate wires. L = Brown, N = Blue. then close the terminal cover and press down lightly.



4. Hold back the clips as you push the downlight into the cut hole



5. Make sure the downlight is fixed correctly in the ceiling then test the power.