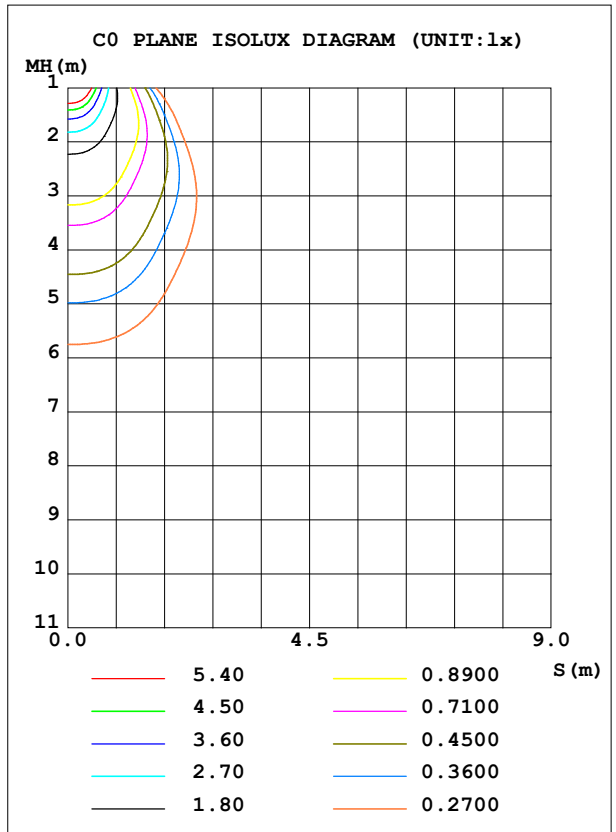
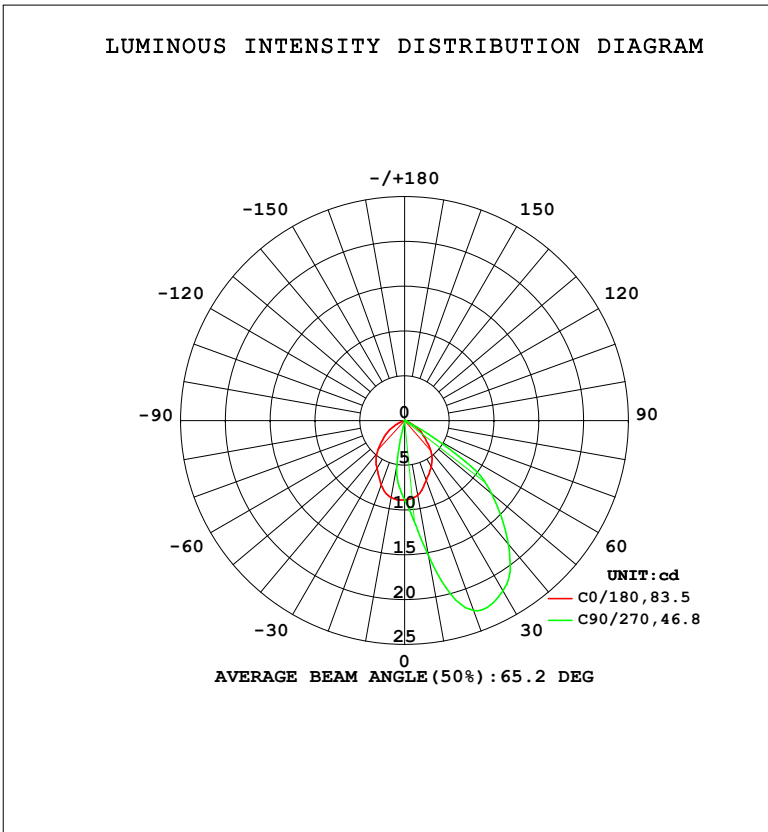


LUMINAIRE PHOTOMETRIC TEST REPORT

Test:U:230.45V I:0.0162A P:3.1303W PF:0.8375 Freq:49.99Hz		
UTHDi:0.00% ITHDi:0.00% KDisp:0 Lamp Flux:21.7425x1 lm		
Name: DL195-2.5-3W-P3	Type: 3W	Weight:
SPEC.: 3000K	DIM.:	Instrument No.: HUP-IES-B3
MFR.: EVERFINE	SUR.: 0.057*0.037	shielding angle:

DATA OF LAMP		PHOTOMETRIC DATA			
MODEL	DL195-2.5-3W-P3	Imax (cd)	22.82	S/MH (C0/180)	1.07
NOMINAL POWER (W)	3	LOR (%)	100.0	S/MH (C90/270)	1.93
RATED VOLTAGE (V)	230	TOTAL FLUX (lm)	21.743	η UP, DN (C0-180)	0.0,12.0
NOMINAL FLUX (lm)	21.7425	CIE CLASS	DIRECT	η UP, DN (C180-360)	0.0,88.0
LAMPS INSIDE	1	η up (%)	0.0	CIBSE SHR NOM	0.75
TEST VOLTAGE (V)	230	η down (%)	100.0	CIBSE SHR MAX	0.90



C Range: 0 - 360DEG
 C Interval: 45.0DEG
 Test Speed: HIGH
 Temperature: 25.3 °C
 Operators: Chen Songyu
 Test Date: 2025-12-09

γ Range: 0 - 90DEG
 γ Interval: 1.0DEG
 Test System: EVERFINE GO-2000H_V1 SYSTEM V2.00.456
 Humidity: 65.0%
 Test Distance: 9.520m [K=1.0000]
 Remarks:

ZONAL FLUX DIAGRAM

ZONAL FLUX DIAGRAM:

γ	C0	C45	C90	C135	C180	C225	C270	C315	γ	Φ zone	Φ total	%lum,lamp
10	8.739	6.635	5.058	6.470	8.465	12.19	15.27	12.61	0- 10	0.8728	0.8728	4.01,4.01
20	7.640	0.6507	0.0465	0.2812	7.104	16.78	22.55	18.50	10- 20	2.675	3.548	16.3,16.3
30	6.210	0.0144	0.0291	0.0174	5.950	16.59	21.95	18.36	20- 30	4.162	7.709	35.5,35.5
40	4.857	0.0144	0.0204	0.0174	4.630	14.28	18.05	14.91	30- 40	4.952	12.66	58.2,58.2
50	3.089	0.0144	0.0203	0.0174	2.893	10.36	12.66	10.76	40- 50	4.682	17.34	79.8,79.8
60	1.675	0.0144	0.0174	0.0174	1.466	5.452	3.070	5.741	50- 60	3.263	20.61	94.8,94.8
70	0.2937	0.0144	0.0174	0.0174	0.1657	0.4052	0.1970	0.3348	60- 70	1.052	21.66	99.6,99.6
80	0.0287	0.0173	0.0174	0.0174	0.0172	0.0318	0.0145	0.0291	70- 80	0.0648	21.72	99.9,99.9
90	0.0172	0.0173	0.0174	0.0174	0.0172	0.0173	0.0145	0.0174	80- 90	0.0201	21.74	100,100
100									90-100			
110									100-110			
120									110-120			
130									120-130			
140									130-140			
150									140-150			
160									150-160			
170									160-170			
180									170-180			
DEG	LUMINOUS INTENSITY:cd									UNIT:lm		

Conical surface Flux(90deg): 15.108 lm

%lum = 69.5%

%lamp = 69.5%

Conical surface Flux(120deg): 20.606 lm

%lum = 94.8%

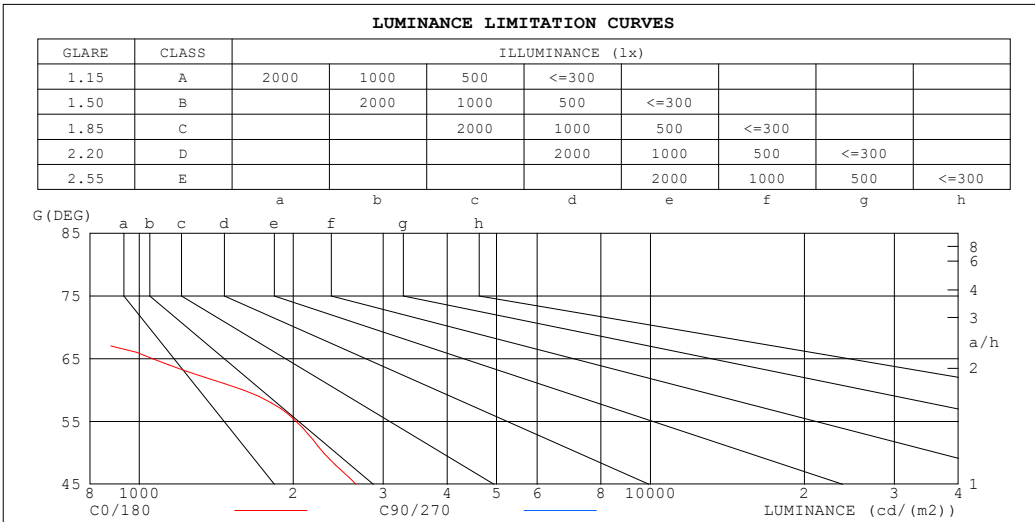
%lamp = 94.8%

C Range: 0 - 360DEG
 C Interval: 45.0DEG
 Test Speed: HIGH
 Temperature:25.3℃
 Operators:Chen Songyu
 Test Date:2025-12-09

γ Range: 0 - 90DEG
 γ Interval: 1.0DEG
 Test System:EVERFINE GO-2000H_V1 SYSTEM V2.00.456
 Humidity:65.0%
 Test Distance:9.520m [K=1.0000]
 Remarks:

LUMINANCE LIMITATION CURVES

Test:U:230.45V I:0.0162A P:3.1303W PF:0.8375 Freq:49.99Hz UTHDi:0.00% ITHDi:0.00% KDisp:0 Lamp Flux:21.7425x1 lm		
Name: DL195-2.5-3W-P3	Type: 3W	Weight:
SPEC.: 3000K	DIM.:	Instrument No.: HUP-IES-B3
MFR.: EVERFINE	SUR.: 0.057*0.037	shielding angle:



LUMINANCE cd/(m2)		
G (DEG)	C0/180	C90/270
85	110	94
80	79	47
75	80	32
70	410	24
65	1062	19
60	1599	16
55	2027	14
50	2294	15
45	2653	14

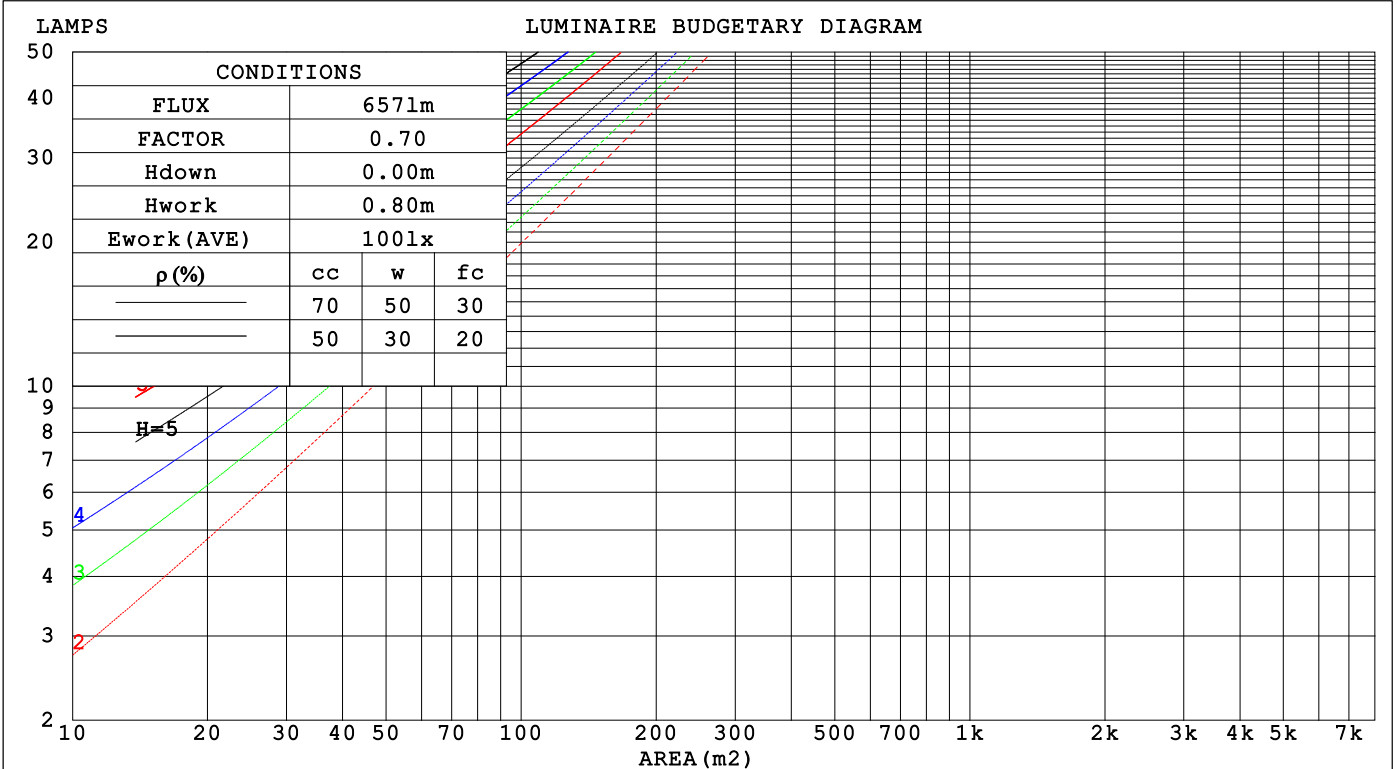
C Range: 0 - 360DEG
 C Interval: 45.0DEG
 Test Speed: HIGH
 Temperature: 25.3 °C
 Operators: Chen Songyu
 Test Date: 2025-12-09

γ Range: 0 - 90DEG
 γ Interval: 1.0DEG
 Test System: EVERFINE GO-2000H_V1 SYSTEM V2.00.456
 Humidity: 65.0%
 Test Distance: 9.520m [K=1.0000]
 Remarks:

CU AND LUMINAIRE BUDGETARY ESTIMATE DIAGRAM

Test:U:230.45V I:0.0162A P:3.1303W PF:0.8375 Freq:49.99Hz		
UTHdi:0.00% ITHdi:0.00% KDisp:0 Lamp Flux:21.7425x1 lm		
Name: DL195-2.5-3W-P3	Type: 3W	Weight:
SPEC.: 3000K	DIM.:	Instrument No.: HUP-IES-B3
MFR.: EVERFINE	SUR.: 0.057*0.037	shielding angle:

pcc	80%			70%			50%			30%			10%			0
pw	50%	30%	10%	50%	30%	10%	50%	30%	10%	50%	30%	10%	50%	30%	10%	0
pfc	20%			20%			20%			20%			20%			0
RCR	RCR:Room Cavity Ratio						Coefficients of Utilization(CU)									
0.0	1.19	1.19	1.19	1.16	1.16	1.16	1.11	1.11	1.11	1.06	1.06	1.06	1.02	1.02	1.02	1.00
1.0	1.08	1.04	1.02	1.06	1.03	.00	1.01	.99	.97	.98	.96	.94	.94	.93	.91	.89
2.0	.97	.91	.87	.95	.90	.86	.91	.87	.84	.88	.85	.82	.85	.82	.80	.78
3.0	.87	.80	.74	.85	.79	.74	.82	.77	.72	.80	.75	.71	.77	.73	.70	.68
4.0	.78	.70	.65	.77	.70	.64	.74	.68	.63	.72	.67	.62	.70	.65	.62	.60
5.0	.70	.62	.57	.69	.62	.56	.67	.61	.56	.65	.60	.55	.64	.59	.55	.53
6.0	.64	.56	.50	.63	.55	.50	.61	.54	.49	.59	.53	.49	.58	.53	.49	.47
7.0	.58	.50	.44	.57	.50	.44	.56	.49	.44	.54	.48	.44	.53	.48	.43	.42
8.0	.53	.45	.40	.52	.45	.40	.51	.44	.40	.50	.44	.39	.49	.43	.39	.37
9.0	.49	.41	.36	.48	.41	.36	.47	.41	.36	.46	.40	.36	.45	.40	.35	.34
10.0	.45	.38	.33	.45	.38	.33	.44	.37	.33	.43	.37	.32	.42	.36	.32	.31



C Range: 0 - 360DEG
 C Interval: 45.0DEG
 Test Speed: HIGH
 Temperature:25.3°C
 Operators:Chen Songyu
 Test Date:2025-12-09

γ Range: 0 - 90DEG
 γ Interval: 1.0DEG
 Test System:EVERFINE GO-2000H_V1 SYSTEM V2.00.456
 Humidity:65.0%
 Test Distance:9.520m [K=1.0000]
 Remarks:

WEC AND CCEC

Test:U:230.45V I:0.0162A P:3.1303W PF:0.8375 Freq:49.99Hz		
UTHDi:0.00% ITHDi:0.00% KDisp:0 Lamp Flux:21.7425x1 lm		
Name: DL195-2.5-3W-P3	Type: 3W	Weight:
SPEC.: 3000K	DIM.:	Instrument No.: HUP-IES-B3
MFR.: EVERFINE	SUR.: 0.057*0.037	shielding angle:

ρ_{CC}	80%			70%			50%			30%			10%			0
ρ_w	50%	30%	10%	50%	30%	10%	50%	30%	10%	50%	30%	10%	50%	30%	10%	0
ρ_{fc}	20%			20%			20%			20%			20%			0
RCR	RCR:Room Cavity Ratio						Wall Exitance Coefficients(WEC)									
0.0																
1.0	.236	.134	.042	.229	.130	.041	.216	.124	.040	.204	.118	.038	.193	.112	.036	
2.0	.233	.128	.039	.227	.125	.038	.216	.120	.037	.205	.115	.036	.196	.111	.035	
3.0	.224	.119	.036	.218	.117	.035	.209	.113	.034	.200	.109	.034	.191	.106	.033	
4.0	.213	.111	.032	.208	.109	.032	.199	.106	.032	.191	.103	.031	.184	.100	.030	
5.0	.201	.103	.030	.197	.101	.030	.190	.099	.029	.182	.096	.029	.176	.094	.028	
6.0	.190	.095	.027	.187	.094	.027	.180	.092	.027	.173	.090	.026	.167	.088	.026	
7.0	.180	.089	.025	.177	.088	.025	.170	.086	.025	.165	.084	.025	.159	.083	.024	
8.0	.170	.083	.023	.167	.082	.023	.162	.081	.023	.157	.079	.023	.152	.078	.023	
9.0	.161	.078	.022	.158	.077	.022	.153	.076	.022	.149	.075	.021	.144	.073	.021	
10.0	.153	.073	.020	.150	.073	.020	.146	.071	.020	.142	.070	.020	.138	.069	.020	

ρ_{CC}	80%			70%			50%			30%			10%			0
ρ_w	50%	30%	10%	50%	30%	10%	50%	30%	10%	50%	30%	10%	50%	30%	10%	0
ρ_{fc}	20%			20%			20%			20%			20%			0
RCR	RCR:Room Cavity Ratio						Ceiling Cavity Exitance Coefficients(CCEC)									
0.0	.190	.190	.190	.163	.163	.163	.111	.111	.111	.064	.064	.064	.020	.020	.020	
1.0	.175	.157	.140	.150	.135	.121	.103	.093	.083	.059	.054	.049	.019	.017	.016	
2.0	.164	.132	.105	.141	.114	.091	.096	.079	.063	.056	.046	.037	.018	.015	.012	
3.0	.156	.114	.081	.133	.098	.070	.092	.068	.049	.053	.040	.029	.017	.013	.009	
4.0	.148	.100	.064	.127	.087	.055	.087	.060	.039	.050	.035	.023	.016	.012	.008	
5.0	.141	.089	.051	.121	.077	.045	.083	.054	.032	.048	.032	.019	.016	.010	.006	
6.0	.134	.081	.042	.115	.070	.037	.080	.049	.026	.046	.029	.016	.015	.009	.005	
7.0	.128	.074	.036	.110	.064	.031	.076	.045	.022	.044	.026	.013	.014	.009	.004	
8.0	.123	.068	.031	.105	.059	.027	.073	.041	.019	.042	.024	.011	.014	.008	.004	
9.0	.117	.063	.027	.101	.055	.023	.070	.039	.017	.041	.023	.010	.013	.007	.003	
10.0	.112	.059	.024	.097	.051	.021	.067	.036	.015	.039	.021	.009	.013	.007	.003	

C Range: 0 - 360DEG
 C Interval: 45.0DEG
 Test Speed: HIGH
 Temperature:25.3°C
 Operators:Chen Songyu
 Test Date:2025-12-09

γ Range: 0 - 90DEG
 γ Interval: 1.0DEG
 Test System:EVERFINE GO-2000H_V1 SYSTEM V2.00.456
 Humidity:65.0%
 Test Distance:9.520m [K=1.0000]
 Remarks:

UGR(Unified Glare Rating) Table

Test:U:230.45V I:0.0162A P:3.1303W PF:0.8375 Freq:49.99Hz UTHDi:0.00% ITHDi:0.00% KDisp:0 Lamp Flux:21.7425x1 lm		
Name: DL195-2.5-3W-P3	Type: 3W	Weight:
SPEC.: 3000K	DIM.:	Instrument No.: HUP-IES-B3
MFR.: EVERFINE	SUR.: 0.057*0.037	shielding angle:

ceiling/cavity	0.7	0.7	0.5	0.5	0.3	0.7	0.7	0.5	0.5	0.3
walls	0.5	0.3	0.5	0.3	0.3	0.5	0.3	0.5	0.3	0.3
working plane	0.2	0.2	0.2	0.2	0.2	0.2	0.2	0.2	0.2	0.2

Room dimensions	Viewed crosswise					Viewed endwise				
x = 2H y = 2H	10.4	11.7	10.6	11.9	12.1	-11.5	-10.2	-11.2	-10.0	-9.8
3H	10.7	11.9	11.0	12.1	12.3	-11.3	-10.1	-11.0	-9.8	-9.6
4H	10.6	11.7	10.9	12.0	12.2	-10.9	-9.8	-10.6	-9.5	-9.3
6H	10.5	11.6	10.8	11.8	12.1	-10.2	-9.1	-9.9	-8.9	-8.6
8H	10.4	11.5	10.8	11.7	12.0	-9.7	-8.6	-9.3	-8.4	-8.1
12H	10.4	11.4	10.7	11.7	12.0	-8.9	-7.9	-8.5	-7.6	-7.3
4H 2H	10.1	11.2	10.4	11.5	11.7	-4.5	-3.3	-4.2	-3.1	-2.9
3H	10.4	11.4	10.8	11.7	12.0	-4.6	-3.6	-4.3	-3.3	-3.0
4H	10.3	11.2	10.7	11.5	11.8	-4.6	-3.7	-4.2	-3.4	-3.1
6H	10.2	11.0	10.6	11.4	11.7	-4.4	-3.7	-4.1	-3.3	-3.0
8H	10.2	10.9	10.6	11.3	11.7	-4.3	-3.6	-3.9	-3.2	-2.8
12H	10.2	10.8	10.6	11.2	11.6	-4.0	-3.3	-3.6	-3.0	-2.6
8H 4H	10.2	10.9	10.6	11.3	11.6	-4.3	-3.6	-3.9	-3.3	-2.9
6H	10.1	10.7	10.5	11.1	11.5	-4.1	-3.5	-3.7	-3.1	-2.7
8H	10.1	10.6	10.5	11.0	11.5	-3.8	-3.3	-3.4	-2.9	-2.5
12H	10.1	10.5	10.5	10.9	11.4	-3.4	-2.9	-2.9	-2.5	-2.0
12H 4H	10.1	10.8	10.6	11.2	11.6	-4.3	-3.7	-3.9	-3.3	-2.9
6H	10.1	10.6	10.5	11.0	11.5	-4.1	-3.5	-3.6	-3.1	-2.7
8H	10.0	10.5	10.5	10.9	11.4	-3.7	-3.3	-3.3	-2.8	-2.4

Variations with the observer position at spacings(CIE Pub.117):		
S = 1.0H	+ 2.0 / - 1.7	+ 2.0 / - 4.0
1.5H	+ 3.1 / - 6.1	+ 3.1 / - 3.1
2.0H	+ 4.2 / -15.7	+ 3.2 / - 3.1

CIE Pub.117, 21.74 lm Total Lamp Luminous Flux Corrected (8log(F/F0) = -13.3)
Area: 0.002109 m2

C Range: 0 - 360DEG	γ Range: 0 - 90DEG
C Interval: 45.0DEG	γ Interval: 1.0DEG
Test Speed: HIGH	Test System:EVERFINE GO-2000H_V1 SYSTEM V2.00.456
Temperature:25.3℃	Humidity:65.0%
Operators:Chen Songyu	Test Distance:9.520m [K=1.0000]
Test Date:2025-12-09	Remarks:

UTILIZATION FACTORS TABLE

Test:U:230.45V I:0.0162A P:3.1303W PF:0.8375 Freq:49.99Hz UTHDi:0.00% ITHDi:0.00% KDisp:0 Lamp Flux:21.7425x1 lm		
Name: DL195-2.5-3W-P3	Type: 3W	Weight:
SPEC.: 3000K	DIM.:	Instrument No.: HUP-IES-B3
MFR.: EVERFINE	SUR.: 0.057*0.037	shielding angle:

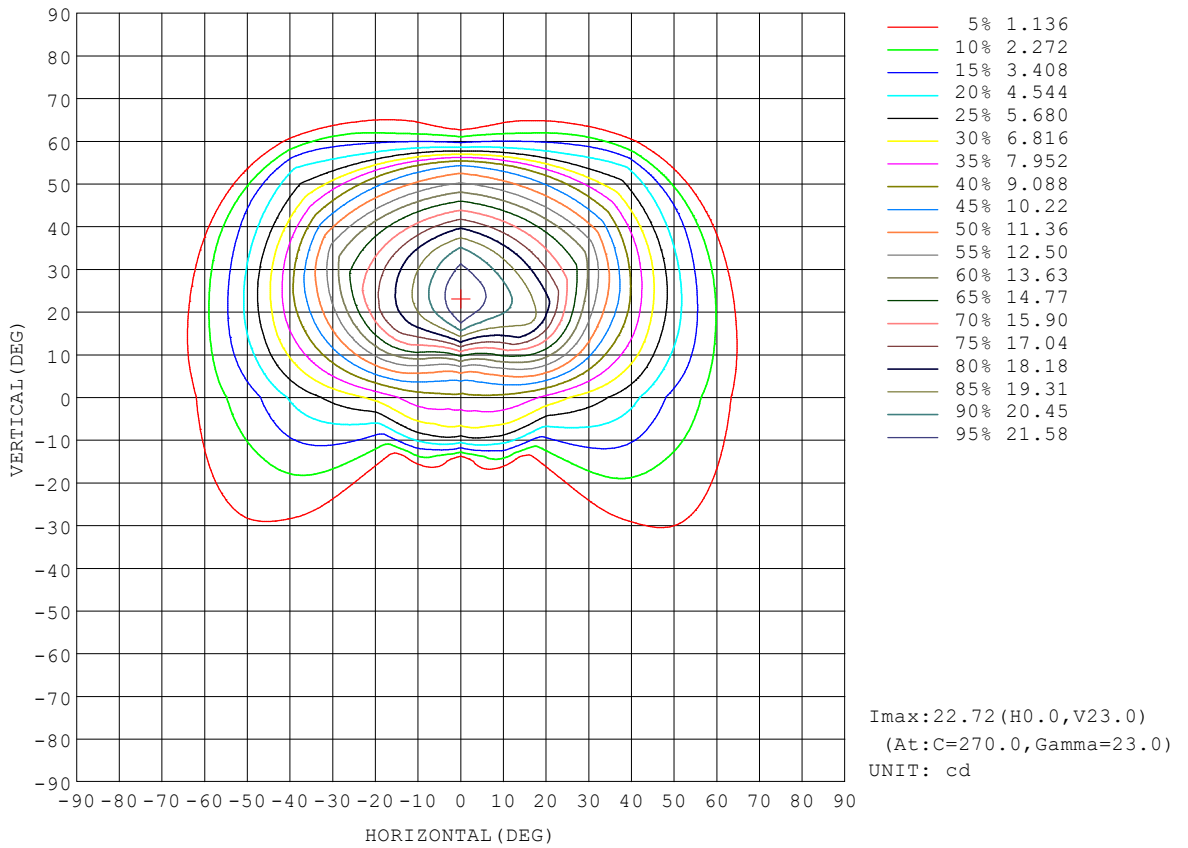
REFLECTANCE										
Ceiling	0.8	0.8	0.8	0.7	0.7	0.7	0.5	0.5	0.5	0
Walls	0.7	0.5	0.3	0.7	0.5	0.3	0.7	0.5	0.3	0
Working plane	0.2	0.2	0.2	0.2	0.2	0.2	0.2	0.2	0.2	0
ROOM INDEX	UTILIZATION FACTORS (PERCENT) $k(RI) \times RCR = 5$									
$k = 0.60$	64	54	48	64	54	48	63	53	48	42
0.80	75	65	59	74	65	59	73	64	58	52
1.00	84	75	69	83	74	69	81	75	68	62
1.25	91	83	77	90	82	76	87	81	76	70
1.50	95	88	82	94	87	82	91	85	81	74
2.00	101	95	90	100	94	89	97	92	88	81
2.50	104	98	94	102	97	93	99	94	91	84
3.00	107	102	97	105	100	96	101	97	94	87
4.00	110	105	102	108	104	100	104	100	98	90
5.00	111	108	105	109	106	103	105	102	100	91
ROOM INDEX	UF(total)									Direct
According to DIN EN 13032-2 2004			Suspended				SHRNOM = 1.25			

C Range: 0 - 360DEG
 C Interval: 45.0DEG
 Test Speed: HIGH
 Temperature:25.3°C
 Operators:Chen Songyu
 Test Date:2025-12-09

γ Range: 0 - 90DEG
 γ Interval: 1.0DEG
 Test System:EVERFINE GO-2000H_V1 SYSTEM V2.00.456
 Humidity:65.0%
 Test Distance:9.520m [K=1.0000]
 Remarks:

ISOCANDELA DIAGRAM

Test:U:230.45V I:0.0162A P:3.1303W PF:0.8375 Freq:49.99Hz UTHDi:0.00% ITHDi:0.00% KDisp:0 Lamp Flux:21.7425x1 lm		
Name: DL195-2.5-3W-P3	Type: 3W	Weight:
SPEC.: 3000K	DIM.:	Instrument No.: HUP-IES-B3
MFR.: EVERFINE	SUR.: 0.057*0.037	shielding angle:

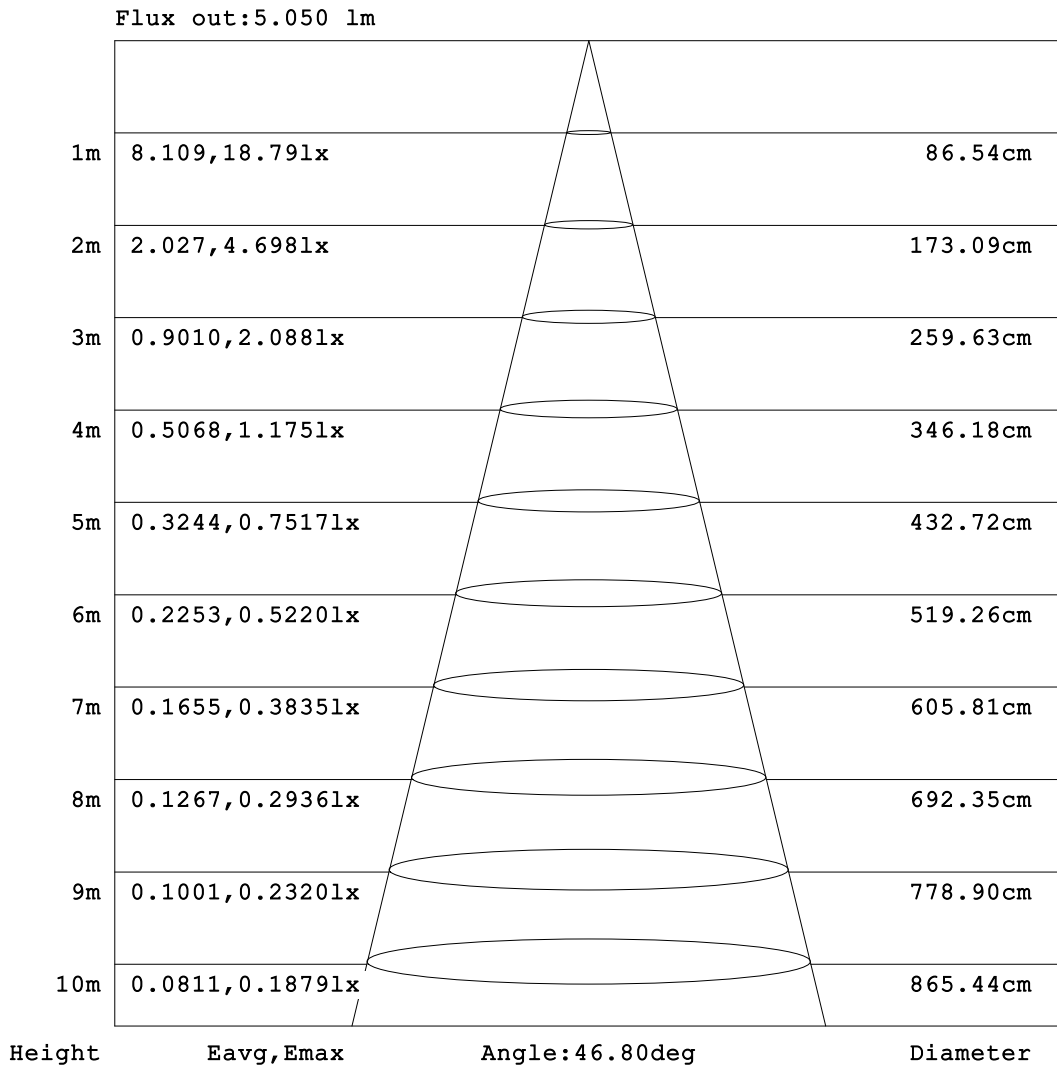


C Range: 0 - 360DEG
 C Interval: 45.0DEG
 Test Speed: HIGH
 Temperature:25.3℃
 Operators:Chen Songyu
 Test Date:2025-12-09

γ Range: 0 - 90DEG
 γ Interval: 1.0DEG
 Test System:EVERFINE GO-2000H_V1 SYSTEM V2.00.456
 Humidity:65.0%
 Test Distance:9.520m [K=1.0000]
 Remarks:

AAI Figure

Test:U:230.45V I:0.0162A P:3.1303W PF:0.8375 Freq:49.99Hz UTHDi:0.00% ITHDi:0.00% KDisp:0 Lamp Flux:21.7425x1 lm		
Name: DL195-2.5-3W-P3	Type: 3W	Weight:
SPEC.: 3000K	DIM.:	Instrument No.: HUP-IES-B3
MFR.: EVERFINE	SUR.: 0.057*0.037	shielding angle:



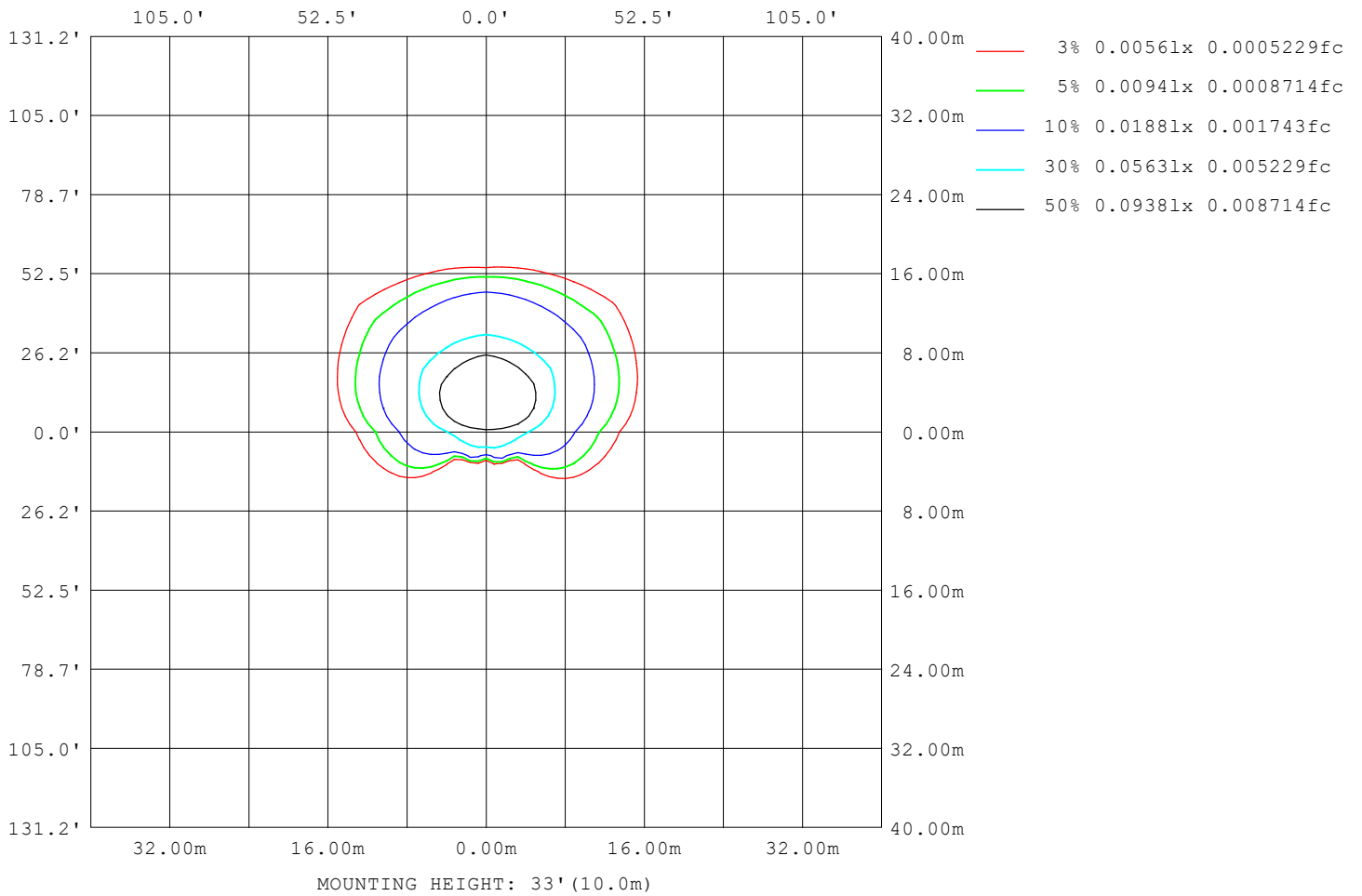
Note:The Curves indicate the illuminated area and the average illumination when the luminaire is at different distance.

C Range: 0 - 360DEG
C Interval: 45.0DEG
Test Speed: HIGH
Temperature:25.3°C
Operators:Chen Songyu
Test Date:2025-12-09

γ Range: 0 - 90DEG
γ Interval: 1.0DEG
Test System:EVERFINE GO-2000H_V1 SYSTEM V2.00.456
Humidity:65.0%
Test Distance:9.520m [K=1.0000]
Remarks:

ISOLUX DIAGRAM

Test:U:230.45V I:0.0162A P:3.1303W PF:0.8375 Freq:49.99Hz UTHDi:0.00% ITHDi:0.00% KDisp:0 Lamp Flux:21.7425x1 lm		
Name: DL195-2.5-3W-P3	Type: 3W	Weight:
SPEC.: 3000K	DIM.:	Instrument No.: HUP-IES-B3
MFR.: EVERFINE	SUR.: 0.057*0.037	shielding angle:



C Range: 0 - 360DEG
 C Interval: 45.0DEG
 Test Speed: HIGH
 Temperature:25.3°C
 Operators:Chen Songyu
 Test Date:2025-12-09

γ Range: 0 - 90DEG
 γ Interval: 1.0DEG
 Test System:EVERFINE GO-2000H_V1 SYSTEM V2.00.456
 Humidity:65.0%
 Test Distance:9.520m [K=1.0000]
 Remarks:

LED Avg.L Report

Test:U:230.45V I:0.0162A P:3.1303W PF:0.8375 Freq:49.99Hz UTHDi:0.00% ITHDi:0.00% KDisp:0 Lamp Flux:21.7425x1 lm		
Name: DL195-2.5-3W-P3	Type: 3W	Weight:
SPEC.: 3000K	DIM.:	Instrument No.: HUP-IES-B3
MFR.: EVERFINE	SUR.: 0.057*0.037	shielding angle:

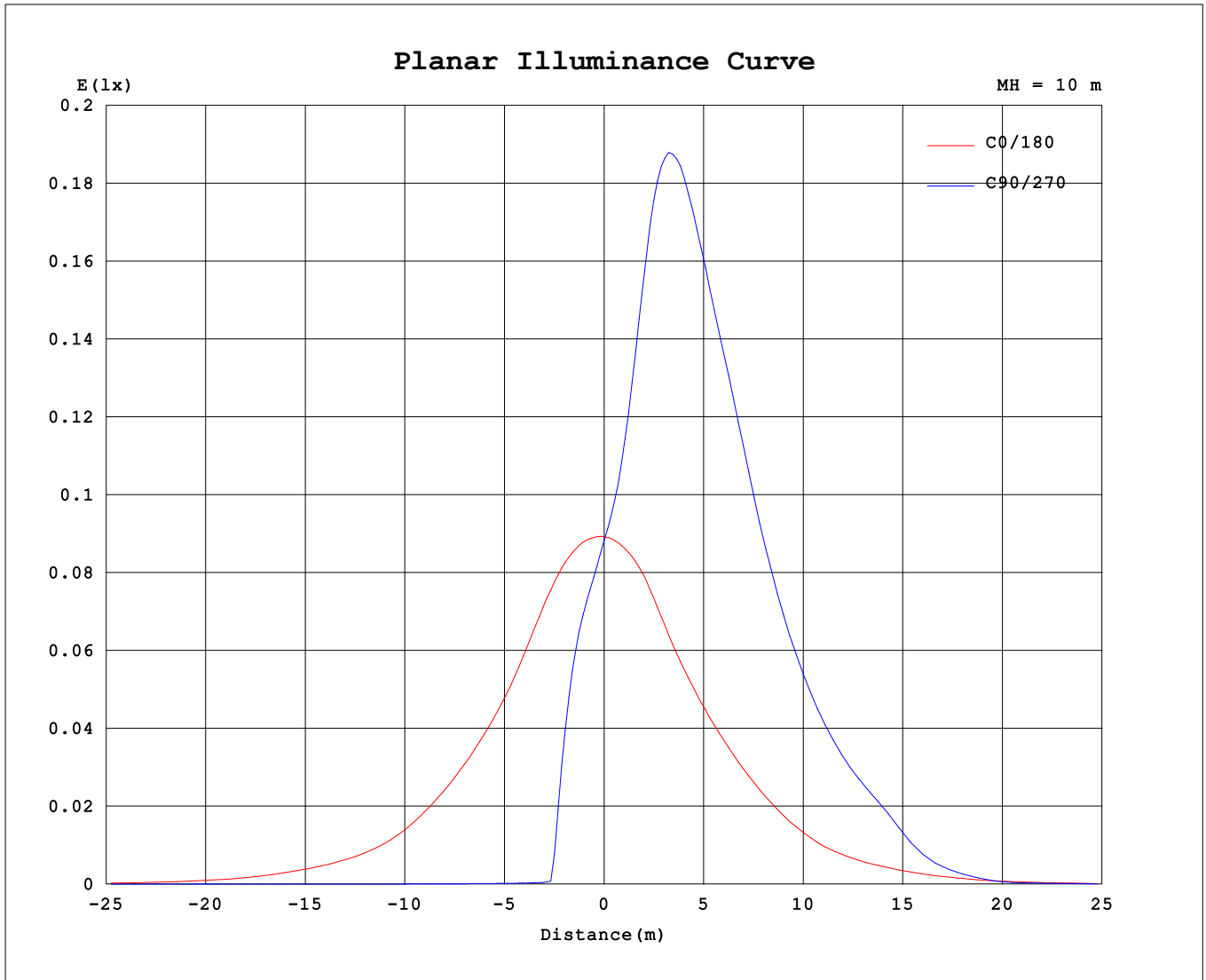
AvgL	cd/m2
L_0~180 (65) av	945
L_0~180 (75) av	55
L_0~180 (85) av	102
L_90~270 (65) av	259
L_90~270 (75) av	42
L_90~270 (85) av	87
L_45 (65) av	1711
L_45 (75) av	117
L_45 (85) av	102

Standard: GB/T 29293-2012

C Range: 0 - 360DEG
 C Interval: 45.0DEG
 Test Speed: HIGH
 Temperature:25.3℃
 Operators:Chen Songyu
 Test Date:2025-12-09

γ Range: 0 - 90DEG
 γ Interval: 1.0DEG
 Test System:EVERFINE GO-2000H_V1 SYSTEM V2.00.456
 Humidity:65.0%
 Test Distance:9.520m [K=1.0000]
 Remarks:

Planar Illuminance Curve



C Range: 0 - 360DEG
 C Interval: 45.0DEG
 Test Speed: HIGH
 Temperature: 25.3 °C
 Operators: Chen Songyu
 Test Date: 2025-12-09

γ Range: 0 - 90DEG
 γ Interval: 1.0DEG
 Test System: EVERFINE GO-2000H_V1 SYSTEM V2.00.456
 Humidity: 65.0%
 Test Distance: 9.520m [K=1.0000]
 Remarks:

