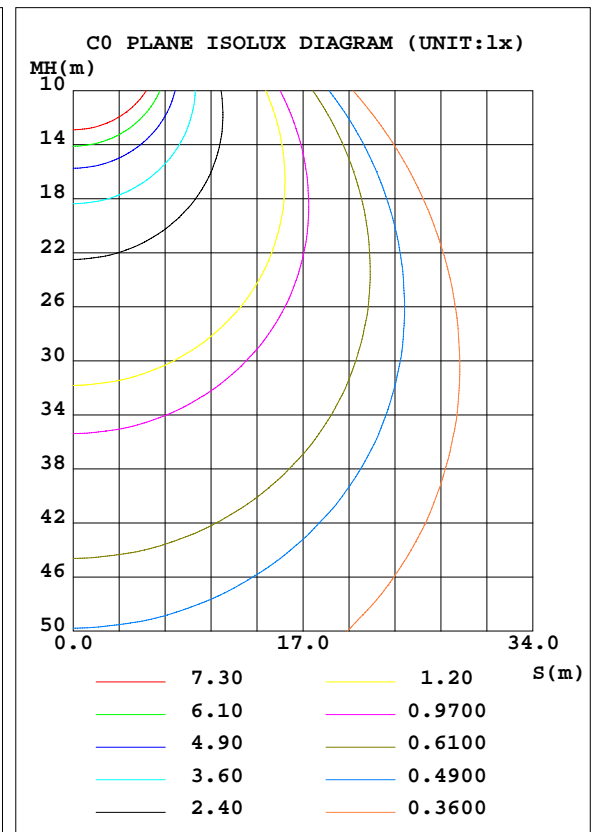
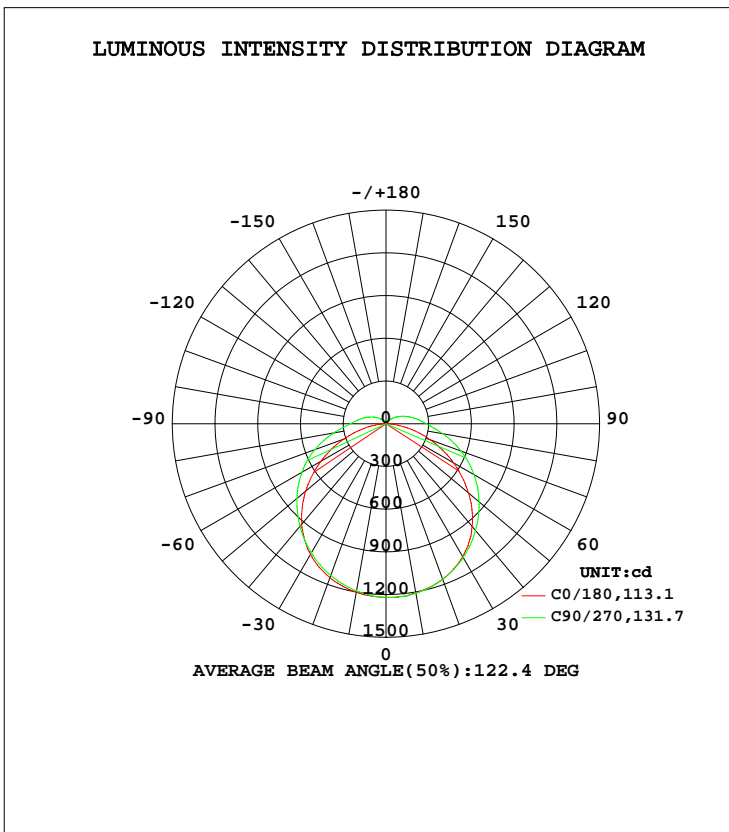


Tim Zhou

LUMINAIRE PHOTOMETRIC TEST REPORT

Test:U:230.13V I:0.1789A P:40.446W PF:0.9826 Freq:50.00Hz Lamp Flux:4445.29x1 lm		
NAME: LED water proof light	TYPE:LED	WEIGHT:
SPEC.:	DIM.:	SERIAL No.:ED190909037L
MFR.: Vynco Industries (N.Z) Limited	SUR.:	Shielding Angle:

DATA OF LAMP		PHOTOMETRIC DATA Eff: 109.91 lm/W			
MODEL	VUM4(F7236T-LS-B)	I _{max} (cd)	1222	S/MH(C0/180)	1.31
NOMINAL POWER(W)		LOR(%)	100.0	S/MH(C90/270)	1.32
RATED VOLTAGE(V)		TOTAL FLUX(lm)	4445.3	η UP, DN(C0-180)	4.3,44.9
NOMINAL FLUX(lm)	4445.29	CIE CLASS	DIRECT	η UP, DN(C180-360)	4.5,46.3
LAMPS INSIDE	1	η up(%)	8.8	CIBSE SHR NOM	1.50
TEST VOLTAGE(V)		η down(%)	91.2	CIBSE SHR MAX	1.50



C Range: 0 - 360DEG
 C Interval: 22.5DEG
 Test Speed: HIGH
 Temperature:25.2DEG
 Operators:SAM
 Test Date:2019-09-10

γ Range: 0 - 180DEG
 γ Interval: 1.0DEG
 Test System:EVERFINE GO-R5000_V2 SYSTEM V2.0.366
 Humidity:56%
 Test Distance:30.000m [K=1.0000]
 Remarks: 4000K

ZONAL FLUX DIAGRAM

ZONAL FLUX DIAGRAM:

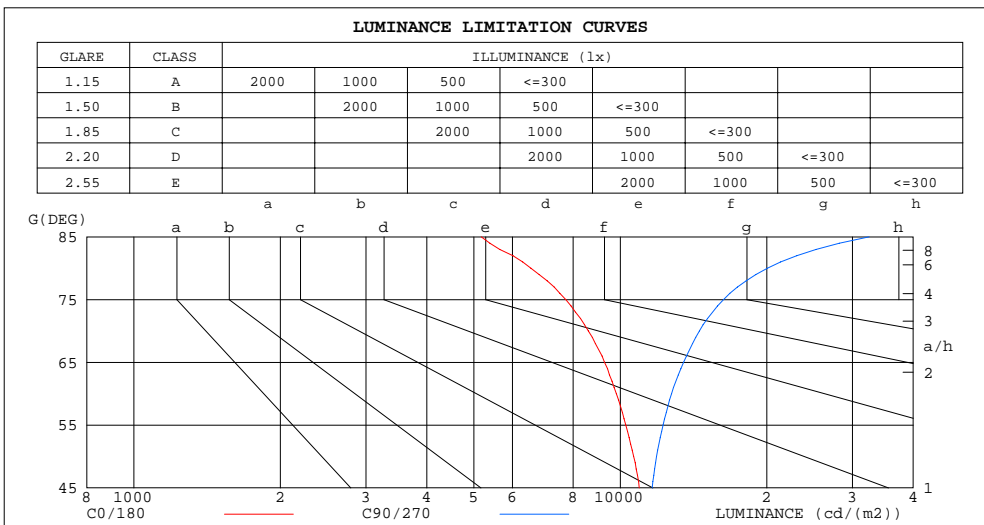
γ	C0	C45	C90	C135	C180	C225	C270	C315	γ	Φ zone	Φ total	Φ lum,lamp
10	1201	1192	1193	1198	1208	1211	1207	1202	0- 10	115.5	115.5	2.6,2.6
20	1150	1123	1133	1135	1163	1156	1161	1141	10- 20	332.2	447.7	10.1,10.1
30	1060	1019	1048	1040	1079	1069	1083	1045	20- 30	507.9	955.6	21.5,21.5
40	921.5	890.6	939.9	918.0	941.9	948.6	978.5	924.9	30- 40	622.4	1578	35.5,35.5
50	736.3	746.0	815.8	777.3	756.6	804.2	854.1	783.3	40- 50	664.3	2242	50.4,50.4
60	527.7	595.9	681.3	627.3	548.1	647.1	713.0	630.6	50- 60	633.3	2876	64.7,64.7
70	316.0	439.8	531.7	470.1	332.5	482.8	561.0	471.3	60- 70	537.7	3413	76.8,76.8
80	122.3	290.3	372.5	314.5	132.6	320.5	405.7	312.4	70- 80	394.7	3808	85.7,85.7
90	15.99	177.9	250.7	196.3	14.65	199.3	283.9	199.9	80- 90	244.8	4053	91.2,91.2
100	12.78	125.6	187.0	140.7	10.76	138.3	212.4	141.6	90-100	159.3	4212	94.8,94.8
110	8.242	83.63	135.7	95.01	7.709	90.92	152.4	93.88	100-110	107.4	4319	97.2,97.2
120	6.656	50.61	92.68	58.90	5.870	54.50	101.9	55.78	110-120	66.11	4386	98.7,98.7
130	5.176	25.56	57.77	31.10	4.434	26.59	62.20	26.96	120-130	35.75	4421	99.5,99.5
140	3.380	7.019	28.75	9.553	3.927	5.884	30.07	5.588	130-140	16.09	4437	99.8,99.8
150	2.535	3.481	6.907	3.783	3.751	3.082	4.698	3.282	140-150	4.818	4442	99.9,99.9
160	2.535	3.418	3.462	3.528	4.224	3.506	3.222	3.703	150-160	1.649	4444	100,100
170	3.692	3.612	3.400	3.643	4.592	4.007	3.563	3.974	160-170	1.041	4445	100,100
180	4.647	3.631	3.626	3.783	4.647	4.007	3.760	4.044	170-180	0.3801	4445	100,100
DEG	LUMINOUS INTENSITY:cd									UNIT:lm		

C Range: 0 - 360DEG
C Interval: 22.5DEG
Test Speed: HIGH
Temperature:25.2DEG
Operators:SAM
Test Date:2019-09-10

γ Range: 0 - 180DEG
 γ Interval: 1.0DEG
Test System:EVERFINE GO-R5000_V2 SYSTEM V2.0.366
Humidity:56%
Test Distance:30.000m [K=1.0000]
Remarks: 4000K

LUMINANCE LIMITATION CURVES

Test:U:230.13V I:0.1789A P:40.446W PF:0.9826 Freq:50.00Hz Lamp Flux:4445.29x1 lm		
NAME: LED water proof light	TYPE:LED	WEIGHT:
SPEC.:	DIM.:	SERIAL No.:ED190909037L
MFR.: Vynco Industries (N.Z) Limited	SUR.:	Shielding Angle:



LUMINANCE cd/(m2)		
G (DEG)	C0/180	C90/270
85	5179	32464
80	6550	20060
75	7724	16305
70	8592	14539
65	9279	13487
60	9814	12744
55	10265	12243
50	10652	11869
45	10938	11626

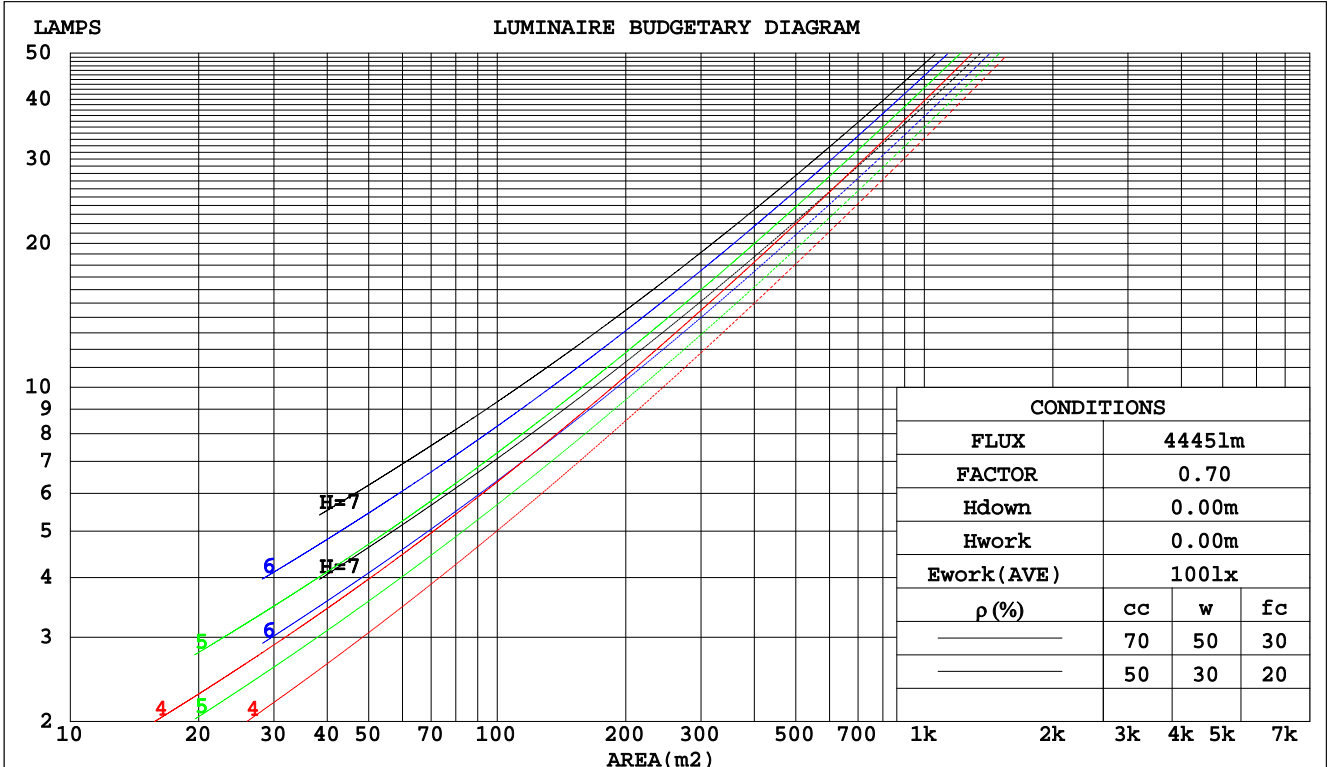
C Range: 0 - 360DEG
 C Interval: 22.5DEG
 Test Speed: HIGH
 Temperature: 25.2DEG
 Operators: SAM
 Test Date: 2019-09-10

γ Range: 0 - 180DEG
 γ Interval: 1.0DEG
 Test System: EVERFINE GO-R5000_V2 SYSTEM V2.0.366
 Humidity: 56%
 Test Distance: 30.000m [K=1.0000]
 Remarks: 4000K

CU AND LUMINAIRE BUDGETARY ESTIMATE DIAGRAM

Test:U:230.13V I:0.1789A P:40.446W PF:0.9826 Freq:50.00Hz Lamp Flux:4445.29x1 lm		
NAME: LED water proof light	TYPE:LED	WEIGHT:
SPEC.:	DIM.:	SERIAL No.:ED190909037L
MFR.: Vynco Industries (N.Z) Limited	SUR.:	Shielding Angle:

pcc	80%			70%			50%			30%			10%			0
pw	50%	30%	10%	50%	30%	10%	50%	30%	10%	50%	30%	10%	50%	30%	10%	0
pfc	20%			20%			20%			20%			20%			0
RCR	RCR:Room Cavity Ratio															
	Coefficients of Utilization(CU)															
0.0	1.17	1.17	1.17	1.13	1.13	1.13	1.06	1.06	1.06	.00	.00	.00	.94	.94	.94	.91
1.0	.99	.94	.90	.96	.91	.87	.90	.86	.83	.85	.82	.79	.80	.77	.75	.72
2.0	.85	.78	.71	.83	.76	.70	.78	.72	.67	.73	.68	.64	.69	.65	.61	.59
3.0	.74	.66	.59	.72	.64	.57	.68	.61	.55	.64	.58	.53	.60	.55	.51	.48
4.0	.65	.56	.49	.64	.55	.48	.60	.52	.47	.56	.50	.45	.53	.48	.43	.41
5.0	.58	.49	.42	.57	.48	.41	.53	.46	.40	.50	.44	.39	.48	.42	.37	.35
6.0	.52	.43	.36	.51	.42	.36	.48	.40	.35	.46	.39	.34	.43	.37	.33	.30
7.0	.47	.38	.32	.46	.37	.31	.44	.36	.31	.41	.35	.30	.39	.33	.29	.27
8.0	.43	.34	.28	.42	.34	.28	.40	.32	.27	.38	.31	.27	.36	.30	.26	.24
9.0	.39	.31	.25	.38	.30	.25	.37	.29	.24	.35	.28	.24	.33	.27	.23	.21
10.0	.36	.28	.23	.35	.28	.23	.34	.27	.22	.32	.26	.22	.31	.25	.21	.19



C Range: 0 - 360DEG
 C Interval: 22.5DEG
 Test Speed: HIGH
 Temperature: 25.2DEG
 Operators: SAM
 Test Date: 2019-09-10

γ Range: 0 - 180DEG
 γ Interval: 1.0DEG
 Test System: EVERFINE GO-R5000_V2 SYSTEM V2.0.366
 Humidity: 56%
 Test Distance: 30.000m [K=1.0000]
 Remarks: 4000K

WEC AND CCEC

Test:U:230.13V I:0.1789A P:40.446W PF:0.9826 Freq:50.00Hz Lamp Flux:4445.29x1 lm		
NAME: LED water proof light	TYPE:LED	WEIGHT:
SPEC.:	DIM.:	SERIAL No.:ED190909037L
MFR.: Vynco Industries (N.Z) Limited	SUR.:	Shielding Angle:

ρcc	80%			70%			50%			30%			10%			0
ρw	50%	30%	10%	50%	30%	10%	50%	30%	10%	50%	30%	10%	50%	30%	10%	0
ρfc	20%			20%			20%			20%			20%			0
RCR	RCR:Room Cavity Ratio						Wall Exitance Coefficients(WEC)									
0.0																
1.0	.360	.205	.065	.350	.200	.063	.332	.190	.061	.315	.181	.058	.299	.173	.056	
2.0	.320	.176	.054	.312	.172	.053	.295	.164	.051	.280	.157	.049	.265	.150	.047	
3.0	.289	.154	.046	.281	.150	.045	.266	.144	.044	.252	.138	.042	.239	.132	.041	
4.0	.262	.136	.040	.255	.133	.039	.241	.128	.038	.229	.123	.037	.217	.118	.036	
5.0	.239	.122	.035	.233	.120	.035	.221	.115	.034	.210	.111	.033	.199	.106	.032	
6.0	.220	.110	.032	.214	.108	.031	.204	.104	.030	.193	.100	.030	.184	.097	.029	
7.0	.204	.101	.029	.199	.099	.028	.189	.095	.027	.179	.092	.027	.171	.089	.026	
8.0	.189	.093	.026	.185	.091	.026	.176	.088	.025	.167	.085	.024	.159	.082	.024	
9.0	.177	.086	.024	.173	.084	.024	.164	.081	.023	.157	.078	.022	.149	.076	.022	
10.0	.166	.079	.022	.162	.078	.022	.154	.076	.021	.147	.073	.021	.140	.071	.020	

ρcc	80%			70%			50%			30%			10%			0
ρw	50%	30%	10%	50%	30%	10%	50%	30%	10%	50%	30%	10%	50%	30%	10%	0
ρfc	20%			20%			20%			20%			20%			0
RCR	RCR:Room Cavity Ratio						Ceiling Cavity Exitance Coefficients(CCEC)									
0.0	.258	.258	.258	.220	.220	.220	.150	.150	.150	.086	.086	.086	.028	.028	.028	
1.0	.252	.224	.198	.215	.192	.171	.147	.132	.118	.085	.076	.069	.027	.025	.022	
2.0	.244	.200	.163	.209	.172	.141	.143	.119	.098	.083	.069	.058	.027	.022	.019	
3.0	.237	.183	.140	.203	.158	.122	.139	.110	.085	.080	.064	.050	.026	.021	.016	
4.0	.229	.170	.125	.196	.147	.109	.135	.103	.077	.078	.060	.045	.025	.020	.015	
5.0	.221	.160	.115	.190	.139	.100	.131	.097	.071	.076	.057	.042	.024	.019	.014	
6.0	.214	.152	.108	.184	.132	.094	.127	.092	.066	.074	.054	.039	.024	.018	.013	
7.0	.207	.145	.102	.178	.126	.089	.123	.088	.063	.071	.052	.038	.023	.017	.012	
8.0	.200	.140	.098	.172	.121	.085	.119	.085	.061	.069	.050	.036	.022	.016	.012	
9.0	.194	.135	.095	.167	.117	.083	.116	.082	.059	.067	.049	.035	.022	.016	.012	
10.0	.188	.130	.092	.162	.113	.080	.112	.080	.057	.066	.047	.034	.021	.015	.011	

C Range: 0 - 360DEG
 C Interval: 22.5DEG
 Test Speed: HIGH
 Temperature:25.2DEG
 Operators:SAM
 Test Date:2019-09-10

γ Range: 0 - 180DEG
 γ Interval: 1.0DEG
 Test System:EVERFINE GO-R5000_V2 SYSTEM V2.0.366
 Humidity:56%
 Test Distance:30.000m [K=1.0000]
 Remarks: 4000K

UGR(Unified Glare Rating) Table

Test:U:230.13V I:0.1789A P:40.446W PF:0.9826 Freq:50.00Hz Lamp Flux:4445.29x1 lm										
NAME: LED water proof light					TYPE:LED			WEIGHT:		
SPEC.:					DIM.:			SERIAL No.:ED190909037L		
MFR.: Vynco Industries (N.Z) Limited					SUR.:			Shielding Angle:		
ceiling/cavity	0.7	0.7	0.5	0.5	0.3	0.7	0.7	0.5	0.5	0.3
walls	0.5	0.3	0.5	0.3	0.3	0.5	0.3	0.5	0.3	0.3
working plane	0.2	0.2	0.2	0.2	0.2	0.2	0.2	0.2	0.2	0.2
Room dimensions	Viewed crosswise					Viewed endwise				
x = 2H y = 2H	20.2	21.6	20.6	22.0	22.4	21.1	22.5	21.5	22.9	23.3
3H	21.7	23.0	22.1	23.4	23.8	23.3	24.7	23.7	25.1	25.5
4H	22.3	23.6	22.7	24.0	24.4	24.5	25.8	24.9	26.2	26.6
6H	22.7	23.9	23.1	24.3	24.8	25.6	26.9	26.1	27.3	27.8
8H	22.8	23.9	23.2	24.4	24.9	26.3	27.4	26.7	27.9	28.4
12H	22.8	24.0	23.3	24.4	24.9	26.9	28.1	27.4	28.5	29.0
4H 2H	21.0	22.2	21.4	22.7	23.1	21.7	22.9	22.1	23.4	23.8
3H	22.7	23.9	23.2	24.3	24.8	24.1	25.3	24.6	25.7	26.2
4H	23.5	24.5	24.0	25.0	25.5	25.4	26.5	26.0	27.0	27.5
6H	24.1	25.0	24.6	25.5	26.1	26.8	27.8	27.4	28.3	28.8
8H	24.3	25.2	24.8	25.7	26.3	27.6	28.4	28.1	29.0	29.5
12H	24.4	25.2	25.0	25.7	26.3	28.4	29.2	29.0	29.7	30.3
8H 4H	24.1	25.0	24.7	25.5	26.1	25.8	26.6	26.3	27.2	27.7
6H	25.0	25.8	25.6	26.3	26.9	27.4	28.2	28.0	28.7	29.3
8H	25.4	26.0	26.0	26.6	27.3	28.4	29.0	29.0	29.6	30.2
12H	25.7	26.2	26.3	26.8	27.5	29.4	30.0	30.1	30.6	31.3
12H 4H	24.3	25.1	24.9	25.6	26.2	25.8	26.6	26.3	27.1	27.7
6H	25.3	26.0	25.9	26.6	27.2	27.5	28.2	28.1	28.8	29.4
8H	25.8	26.4	26.4	27.0	27.7	28.6	29.1	29.2	29.7	30.4
Variations with the observer position at spacings:										
S = 1.0H	+ 0.1 / - 0.2					+ 0.1 / - 0.1				
1.5H	+ 0.2 / - 0.3					+ 0.2 / - 0.3				
2.0H	+ 0.2 / - 0.4					+ 0.2 / - 0.3				

CIE Pub.117, 4445 lm Total Lamp Luminous Flux Corrected ($8\log(F/F_0) = 5.2$)

C Range: 0 - 360DEG
C Interval: 22.5DEG
Test Speed: HIGH
Temperature:25.2DEG
Operators:SAM
Test Date:2019-09-10

γ Range: 0 - 180DEG
 γ Interval: 1.0DEG
Test System:EVERFINE GO-R5000_V2 SYSTEM V2.0.366
Humidity:56%
Test Distance:30.000m [K=1.0000]
Remarks: 4000K

UTILIZATION FACTORS TABLE

Test:U:230.13V I:0.1789A P:40.446W PF:0.9826 Freq:50.00Hz Lamp Flux:4445.29x1 lm		
NAME: LED water proof light	TYPE:LED	WEIGHT:
SPEC.:	DIM.:	SERIAL No.:ED190909037L
MFR.: Vynco Industries (N.Z) Limited	SUR.:	Shielding Angle:

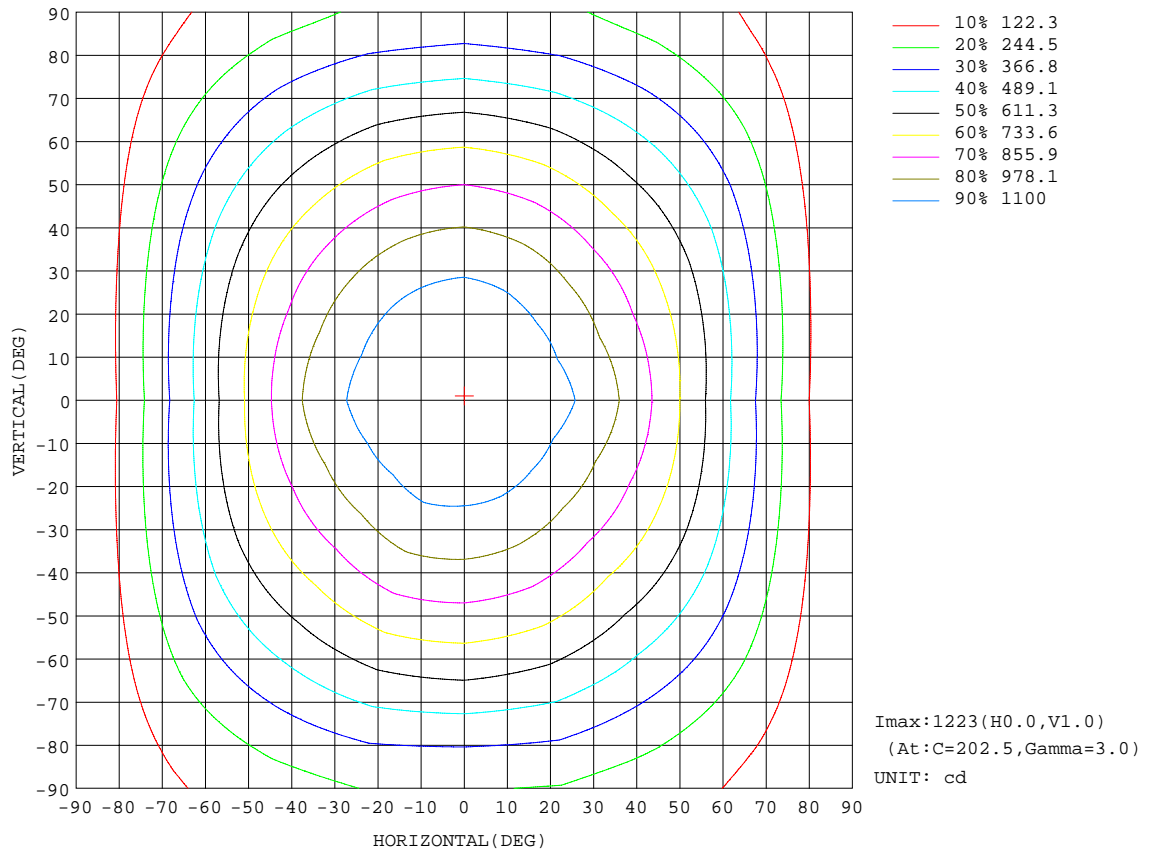
REFLECTANCE										
Ceiling	0.8	0.8	0.8	0.7	0.7	0.7	0.5	0.5	0.5	0
Walls	0.7	0.5	0.3	0.7	0.5	0.3	0.7	0.5	0.3	0
Working plane	0.2	0.2	0.2	0.2	0.2	0.2	0.2	0.2	0.2	0
ROOM INDEX	UTILIZATION FACTORS(PERCENT) $k(RI) \times RCR = 5$									
k = 0.60	52	40	33	51	39	32	50	39	32	26
0.80	61	49	41	60	48	41	58	47	40	33
1.00	69	57	49	68	56	49	65	58	48	40
1.25	76	65	57	75	64	56	71	62	55	46
1.50	82	70	62	79	69	61	76	67	60	51
2.00	89	79	71	86	77	70	82	74	68	58
2.50	93	84	76	90	82	75	85	78	73	62
3.00	97	88	81	94	86	80	88	82	77	66
4.00	101	94	88	98	91	86	92	87	83	71
5.00	104	98	92	101	95	90	95	90	86	74
ROOM INDEX	UF(total)									Direct
According to DIN EN 13032-2 2004			Suspended				SHRNOM = 1.25			

C Range: 0 - 360DEG
 C Interval: 22.5DEG
 Test Speed: HIGH
 Temperature:25.2DEG
 Operators:SAM
 Test Date:2019-09-10

γ Range: 0 - 180DEG
 γ Interval: 1.0DEG
 Test System:EVERFINE GO-R5000_V2 SYSTEM V2.0.366
 Humidity:56%
 Test Distance:30.000m [K=1.0000]
 Remarks: 4000K

ISOCANDELA DIAGRAM

Test:U:230.13V I:0.1789A P:40.446W PF:0.9826 Freq:50.00Hz Lamp Flux:4445.29x1 lm		
NAME: LED water proof light	TYPE:LED	WEIGHT:
SPEC.:	DIM.:	SERIAL No.:ED190909037L
MFR.: Vynco Industries (N.Z) Limited	SUR.:	Shielding Angle:

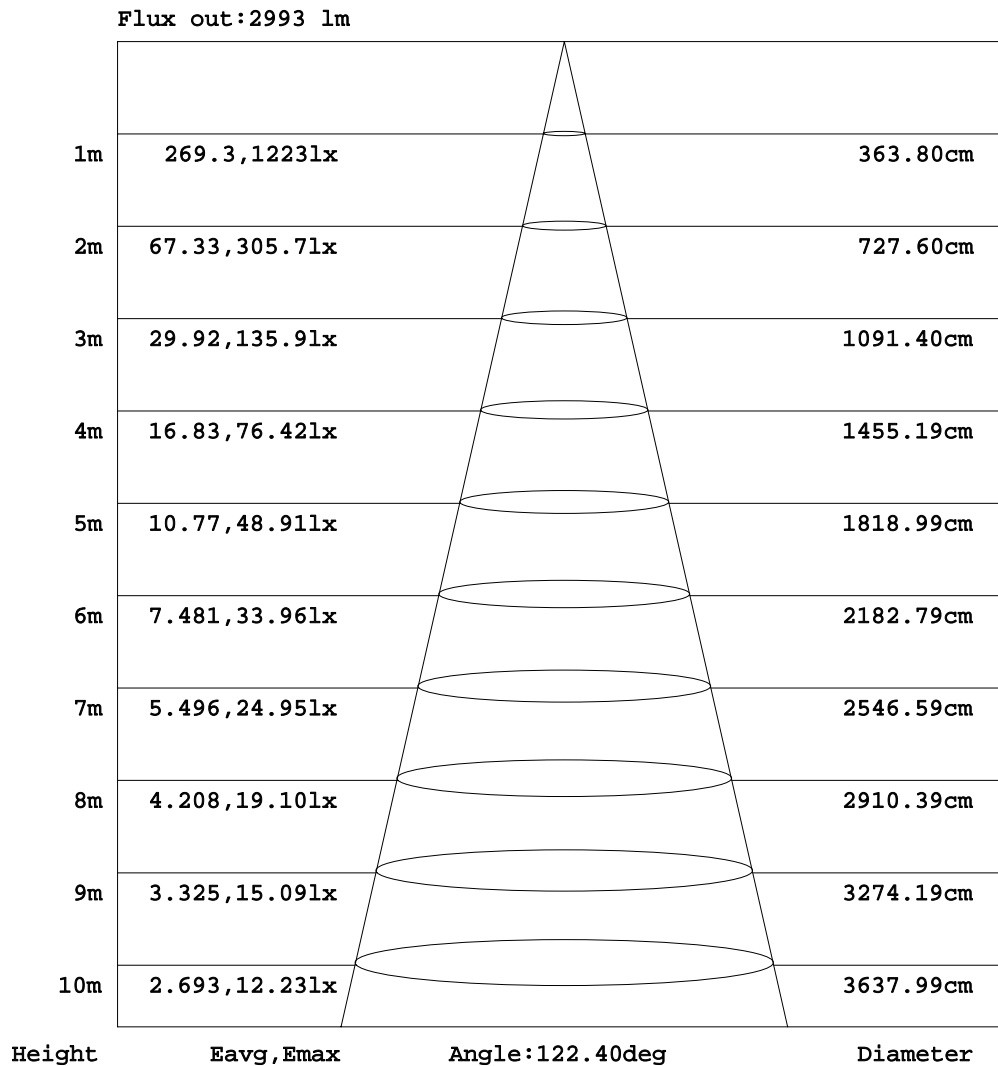


C Range: 0 - 360DEG
 C Interval: 22.5DEG
 Test Speed: HIGH
 Temperature: 25.2DEG
 Operators: SAM
 Test Date: 2019-09-10

γ Range: 0 - 180DEG
 γ Interval: 1.0DEG
 Test System: EVERFINE GO-R5000_V2 SYSTEM V2.0.366
 Humidity: 56%
 Test Distance: 30.000m [K=1.0000]
 Remarks: 4000K

AAI Figure

Test:U:230.13V I:0.1789A P:40.446W PF:0.9826 Freq:50.00Hz Lamp Flux:4445.29x1 lm		
NAME: LED water proof light	TYPE:LED	WEIGHT:
SPEC.:	DIM.:	SERIAL No.:ED190909037L
MFR.: Vynco Industries (N.Z) Limited	SUR.:	Shielding Angle:



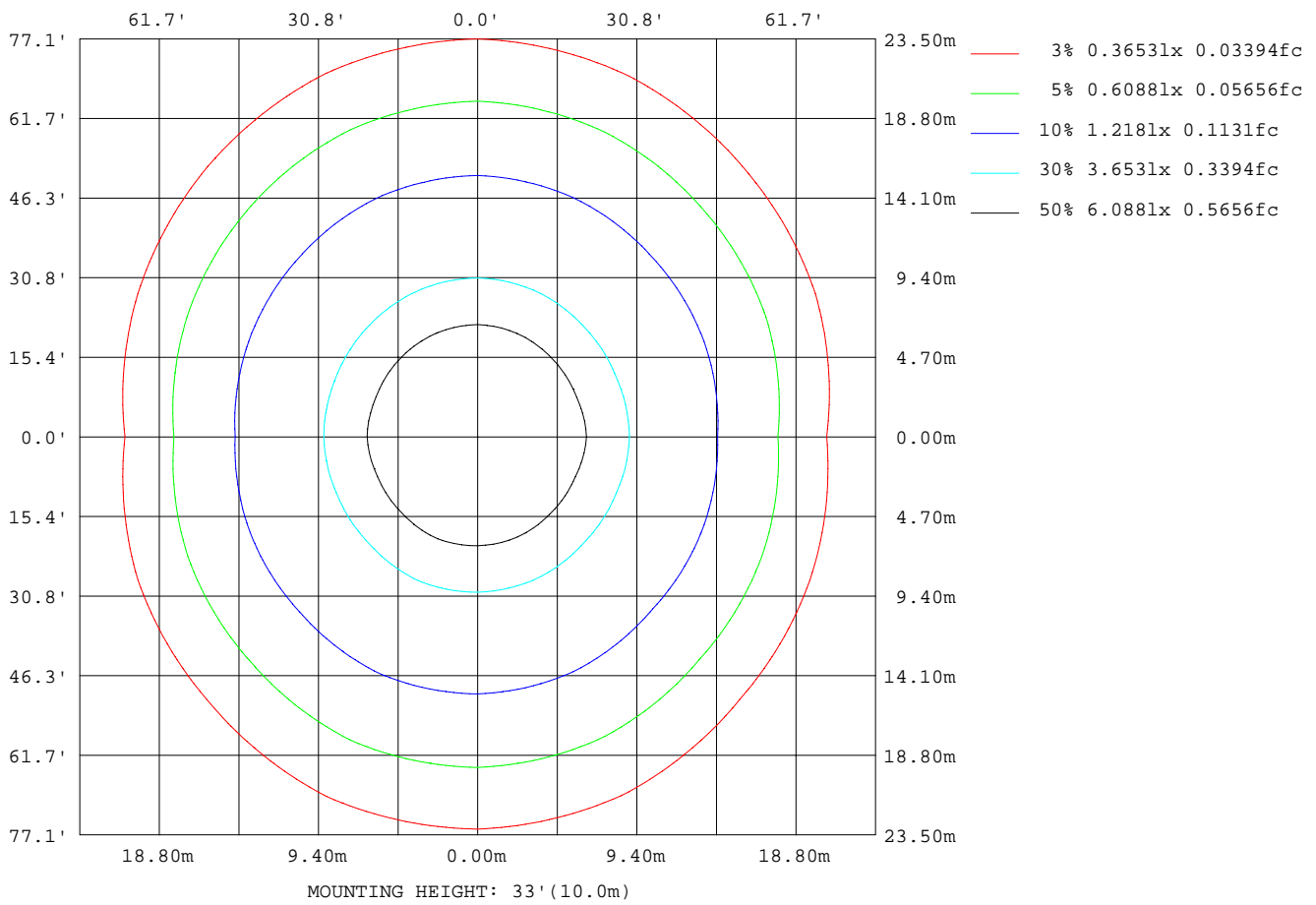
Note:The Curves indicate the illuminated area and the average illumination when the luminaire is at different distance.

C Range: 0 - 360DEG
 C Interval: 22.5DEG
 Test Speed: HIGH
 Temperature:25.2DEG
 Operators:SAM
 Test Date:2019-09-10

γ Range: 0 - 180DEG
 γ Interval: 1.0DEG
 Test System:EVERFINE GO-R5000_V2 SYSTEM V2.0.366
 Humidity:56%
 Test Distance:30.000m [K=1.0000]
 Remarks: 4000K

ISOLUX DIAGRAM

Test:U:230.13V I:0.1789A P:40.446W PF:0.9826 Freq:50.00Hz Lamp Flux:4445.29x1 lm		
NAME: LED water proof light	TYPE:LED	WEIGHT:
SPEC.:	DIM.:	SERIAL No.:ED190909037L
MFR.: Vynco Industries (N.Z) Limited	SUR.:	Shielding Angle:



C Range: 0 - 360DEG
 C Interval: 22.5DEG
 Test Speed: HIGH
 Temperature:25.2DEG
 Operators:SAM
 Test Date:2019-09-10

γ Range: 0 - 180DEG
 γ Interval: 1.0DEG
 Test System:EVERFINE GO-R5000_V2 SYSTEM V2.0.366
 Humidity:56%
 Test Distance:30.000m [K=1.0000]
 Remarks: 4000K

LED Avg.L Report

Test:U:230.13V I:0.1789A P:40.446W PF:0.9826 Freq:50.00Hz Lamp Flux:4445.29x1 lm		
NAME: LED water proof light	TYPE:LED	WEIGHT:
SPEC.:	DIM.:	SERIAL No.:ED190909037L
MFR.: Vynco Industries (N.Z) Limited	SUR.:	Shielding Angle:

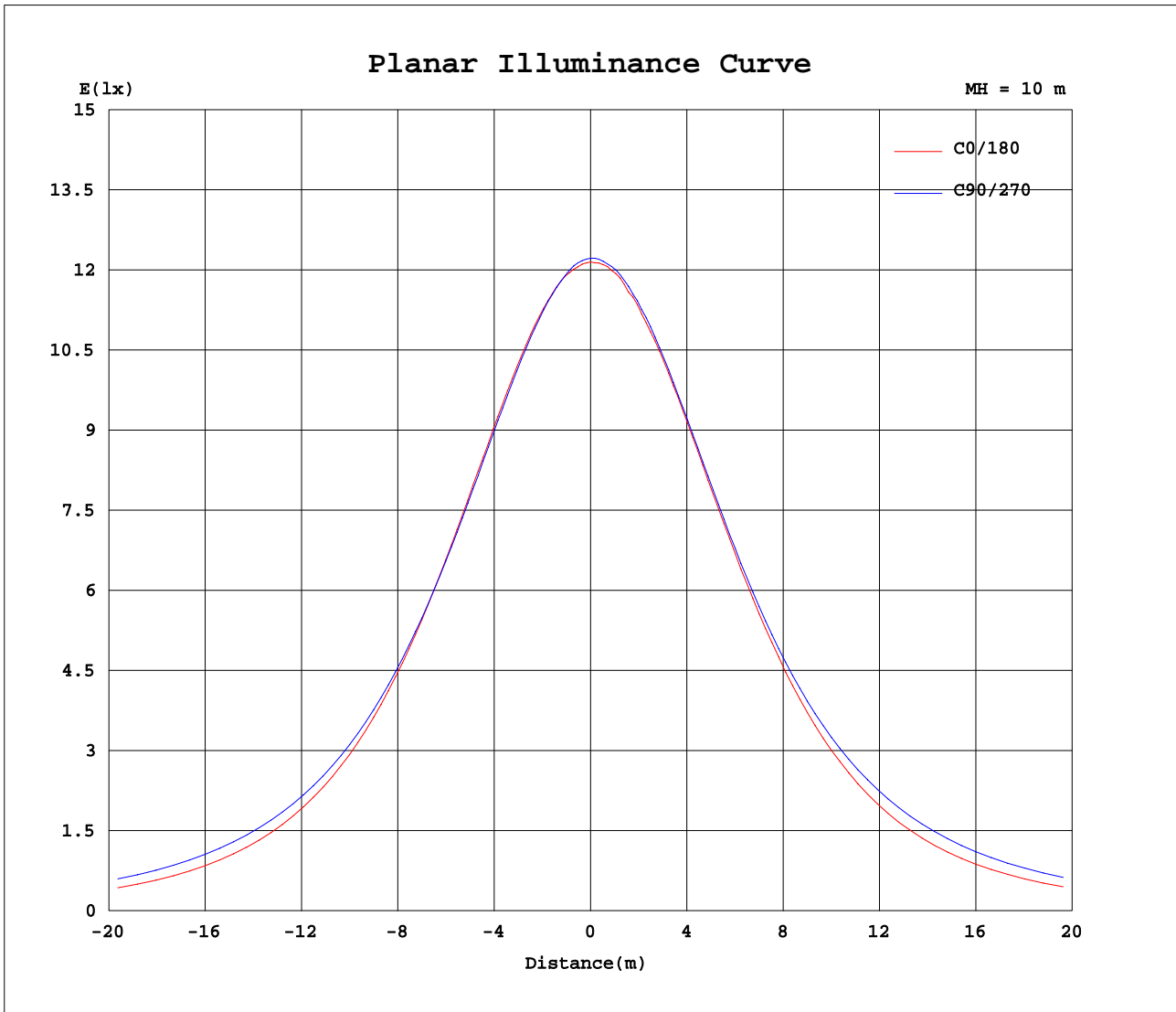
AvgL	cd/m2
L_0~180(65)av	9495
L_0~180(75)av	7996
L_0~180(85)av	5525
L_90~270(65)av	13780
L_90~270(75)av	16842
L_90~270(85)av	34184
L_45(65)av	12055
L_45(75)av	13932
L_45(85)av	25874

Standard: GB/T 29293-2012

C Range: 0 - 360DEG
C Interval: 22.5DEG
Test Speed: HIGH
Temperature:25.2DEG
Operators:SAM
Test Date:2019-09-10

γ Range: 0 - 180DEG
 γ Interval: 1.0DEG
Test System:EVERFINE GO-R5000_V2 SYSTEM V2.0.366
Humidity:56%
Test Distance:30.000m [K=1.0000]
Remarks: 4000K

Planar Illuminance Curve



C Range: 0 - 360DEG
 C Interval: 22.5DEG
 Test Speed: HIGH
 Temperature: 25.2DEG
 Operators: SAM
 Test Date: 2019-09-10

γ Range: 0 - 180DEG
 γ Interval: 1.0DEG
 Test System: EVERFINE GO-R5000_V2 SYSTEM V2.0.366
 Humidity: 56%
 Test Distance: 30.000m [K=1.0000]
 Remarks: 4000K

LUMINOUS DISTRIBUTION INTENSITY DATA

Test:U:230.13V I:0.1789A P:40.446W PF:0.9826 Freq:50.00Hz Lamp Flux:4445.29x1 lm		
NAME: LED water proof light	TYPE:LED	WEIGHT:
SPEC.:	DIM.:	SERIAL No.:ED190909037L
MFR.: Vynco Industries (N.Z) Limited	SUR.:	Shielding Angle:

Table--1

UNIT: cd

C(DEG) γ (DEG)	0	22.5	45	67.5	90	112.5	135	157.5	180	202.5	225	247.5	270	292.5	315	337.5			
0	1220	1220	1220	1220	1220	1220	1220	1220	1220	1220	1220	1220	1220	1220	1220	1220			
5	1214	1210	1212	1211	1211	1214	1215	1217	1218	1221	1220	1217	1218	1216	1216	1213			
10	1201	1190	1192	1190	1193	1199	1198	1202	1208	1206	1211	1208	1207	1204	1202	1195			
15	1180	1162	1163	1164	1166	1174	1171	1175	1189	1185	1191	1187	1190	1182	1175	1170			
20	1150	1123	1123	1127	1133	1144	1135	1140	1163	1152	1156	1159	1161	1152	1141	1132			
25	1111	1074	1074	1085	1094	1102	1091	1094	1126	1108	1115	1122	1128	1114	1097	1085			
30	1060	1019	1019	1039	1048	1058	1040	1040	1079	1054	1069	1077	1083	1068	1045	1029			
35	996	956	958	981	996	1002	981	979	1017	996	1010	1026	1035	1016	989	968			
40	921	888	891	924	940	945	918	911	942	932	949	968	979	957	925	901			
45	832	816	820	860	879	881	849	838	854	855	879	905	918	894	855	828			
50	736	737	746	794	816	815	777	761	757	777	804	839	854	828	783	752			
55	633	654	671	725	751	745	704	680	652	691	728	770	786	757	707	672			
60	528	567	596	654	681	674	627	595	548	602	647	696	713	683	631	588			
65	422	476	517	581	610	600	549	506	438	507	566	619	638	607	551	498			
70	316	386	440	507	532	526	470	416	333	411	483	540	561	529	471	407			
75	215	296	364	433	451	448	391	325	228	318	400	460	482	451	390	314			
80	122	211	290	361	372	371	314	237	133	229	320	383	406	375	312	226			
85	48.5	140	226	292	303	302	246	161	54.6	154	249	312	336	308	245	152			
90	16.0	93.4	178	238	251	249	196	109	14.7	104	199	261	284	261	200	106			
95	14.3	70.2	150	204	217	216	167	83.5	11.4	77.6	166	224	246	227	169	80.5			
100	12.8	52.3	126	174	187	184	141	64.0	10.8	58.2	138	191	212	195	142	60.5			
105	10.9	37.5	104	147	160	156	117	47.6	9.39	42.8	113	162	181	166	116	44.1			
110	8.24	25.9	83.6	124	136	131	95.0	34.6	7.71	30.7	90.9	135	152	139	93.9	31.6			
115	7.50	15.9	66.0	102	113	108	75.9	24.0	6.55	20.7	71.6	110	126	114	73.7	20.6			
120	6.66	8.03	50.6	83.4	92.7	87.9	58.9	14.7	5.87	11.8	54.5	88.6	102	91.6	55.8	11.7			
125	5.92	3.58	37.6	66.4	74.7	69.5	44.3	7.64	4.96	6.29	39.7	69.1	80.8	71.3	40.5	5.26			
130	5.18	3.56	25.6	50.3	57.8	52.6	31.1	5.02	4.43	4.93	26.6	51.8	62.2	53.4	27.0	3.83			
135	4.12	3.55	15.5	36.6	42.6	38.1	19.5	4.41	4.03	4.19	15.1	36.4	45.7	37.5	15.4	3.47			
140	3.38	3.53	7.02	23.4	28.8	24.5	9.55	3.81	3.93	3.81	5.88	22.7	30.1	23.4	5.59	3.27			
145	2.96	3.51	3.63	11.7	17.0	12.5	4.31	3.77	3.82	3.36	3.03	11.1	16.0	11.4	3.17	3.23			
150	2.54	3.50	3.48	5.41	6.91	5.98	3.78	3.74	3.75	3.36	3.08	3.31	4.70	3.37	3.28	3.29			
155	2.53	3.48	3.34	4.80	3.49	4.51	3.55	3.76	3.91	3.36	3.13	2.93	2.28	3.32	3.39	3.35			
160	2.53	3.70	3.42	4.18	3.46	3.86	3.53	4.30	4.22	3.36	3.51	3.00	3.22	3.26	3.70	3.39			
165	2.85	4.26	3.55	3.88	3.43	3.89	3.61	4.67	4.55	3.36	3.76	3.07	3.41	3.20	3.92	3.51			
170	3.69	4.63	3.61	3.90	3.40	3.99	3.64	4.97	4.59	3.45	4.01	3.15	3.56	3.14	3.97	4.18			
175	4.33	4.68	3.63	3.94	3.37	4.03	3.65	5.09	4.63	4.15	4.01	3.55	3.76	3.10	4.02	4.78			
180	4.65	4.82	3.63	3.95	3.63	3.77	3.78	5.02	4.65	4.71	4.01	3.69	3.76	3.77	4.04	4.90			

C Range: 0 - 360DEG
 C Interval: 22.5DEG
 Test Speed: HIGH
 Temperature:25.2DEG
 Operators:SAM
 Test Date:2019-09-10

γ Range: 0 - 180DEG
 γ Interval: 1.0DEG
 Test System:EVERFINE GO-R5000_V2 SYSTEM V2.0.366
 Humidity:56%
 Test Distance:30.000m [K=1.0000]
 Remarks: 4000K