

## MAGNUM RANGE

# VEF2 / ARCHITECTURAL EXTERNAL FAN + GRILLE

### FEATURES

- IPX4
- 5 Year Warranty
- Custom powder coating available

VEF2B

Satin Black

VEF2W

Arctic White

VEF2G

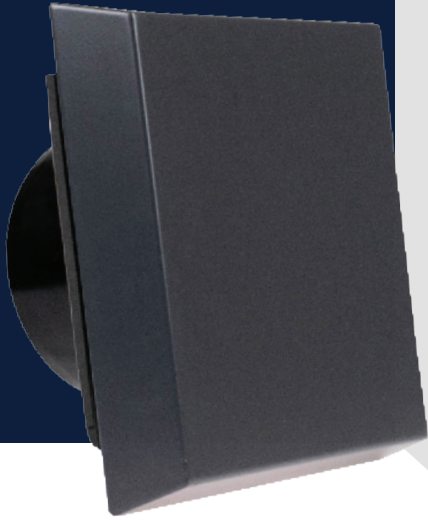
Gunmetal Grey

### VEF2

Grille Material	Aluminium
Grille Type	Tapered Square
Warranty	5 Years
Input Power	60W
Rated Voltage	230V
IP Rating	IPX4
Motor Type	Centrifugal Impeller
Accoustic Sound 1m from Fan	64-66dB(A)
Max (Free air) Flow m <sup>3</sup> /h	528m <sup>3</sup> /h
Max (Free air) Flow L/s	161.7L/s
Supply Led Length	450 ± 20mm
Supply Led Size	4 core (1mm <sup>2</sup> )
Approvals/compliance	CE / CUL / UL
Test Certification	AS/NZ 60335.2.80:2016 AS/NZS 60335.1:2011+A1+A2+A3+A4

### FITTING DIMENSIONS

Overall Size (HxWxD)	287 x 287 x 145mm
Overall Cover Depth	79mm
Spigot Cutout Diameter	Ø 159mm
Duct Size	Ø 150mm



## MAGNUM RANGE

# VEG2 / ARCHITECTURAL EXTERNAL GRILLE

## FEATURES

- 5 Year Warranty
- Custom powder coating available

VEG2B

Satin Black

VEG2W

Arctic White

VEG2G

Gunmetal Grey

## VEG2

Grille Material	Aluminium
Grille Type	Tapered Square
<b>FITTING DIMENSIONS</b>	
Overall Size	287 x 287 x 145mm
Overall Cover Depth	79mm
Spigot Cutout Diameter	Ø 159mm
Duct Size	Ø 150mm