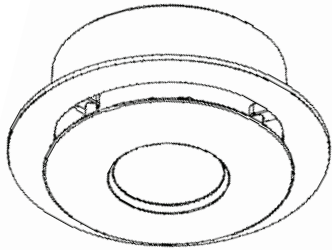


VGL150RW - REACHER GRILLE WITH LIGHT



SAFETY

This product complies with the relevant AS/NZS standards.

Turn off power supply before installation or before any maintenance work.

This product should be installed by a suitably qualified person in accordance with Australian and New Zealand wiring rules.

WARRANTY

This product is covered by the standard 3 Year Vynco Warranty - proof of purchase is required. Please contact Vynco for details of returns procedure.

NOTE: This product contains NO user serviceable parts.

SPECIFICATIONS

Input Voltage	200 - 240V AC
Duct Size	150mm
Typical Power	8W
IP Rating	IP24 (Light); IP20 (Driver)
Spigot Cutout	159mm

WIRING

L = Phase (Red)
N = Neutral (Black)

INSTALLATION PROCEDURE

STEP 1

Separate the light grille from the base.

STEP 2

Select the desired colour temperature on CCT switch before installation.

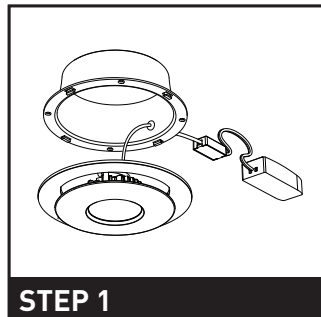
CW = 5700K; NW = 4000K; WW = 3000K

STEP 3

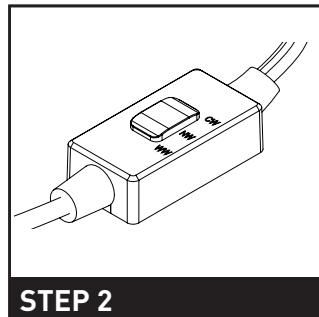
Ensure desired location is suitable and clear of all obstructions. Cut a 159mm hole in the ceiling with a suitable tool.

STEP 4

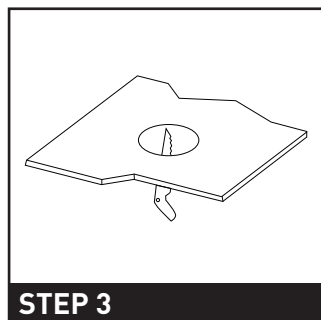
After ensuring circuit is isolated, pull mains wiring down through 160mm hole.



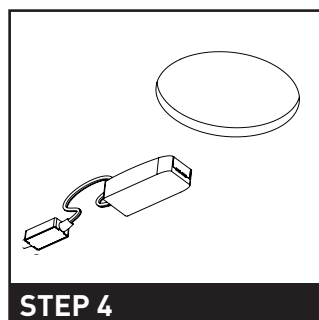
STEP 1



STEP 2



STEP 3



STEP 4

VYNCO INDUSTRIES (NZ) LIMITED

CHRISTCHURCH

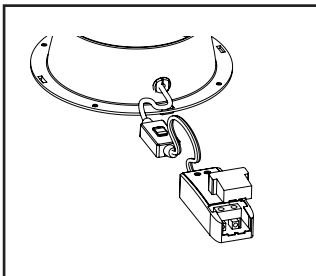
388 Tuam Street, Phillipstown, Christchurch, 8011
PO Box 9022, Tower Junction, Christchurch 8149
New Zealand
P +64 3 379 9283 F +64 3 379 6838
E sales@vynco.co.nz

VYNCO.CO.NZ

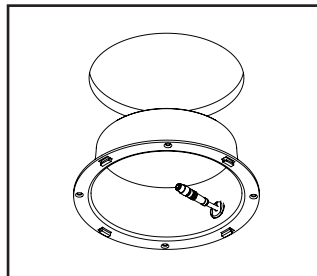
AUCKLAND

9 Levene Place, Mount Wellington
PO Box 12 249, Penrose, Auckland 1061
New Zealand
P +64 9 525 6051 F +64 9 525 5799

VGL150RW - REACHER GRILLE WITH LIGHT



STEP 5



STEP 6

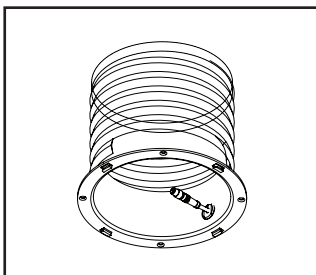
INSTALLATION PROCEDURE CONTINUED

STEP 5

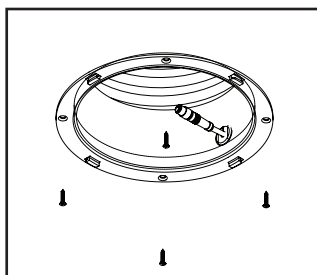
Use a flat head screwdriver to remove the driver terminal cover, feed the main AC wire L.N. into the screw terminals respectively, then click cover back on.

STEP 6

Place driver and CCT switch in the ceiling space.



STEP 7



STEP 8

STEP 7

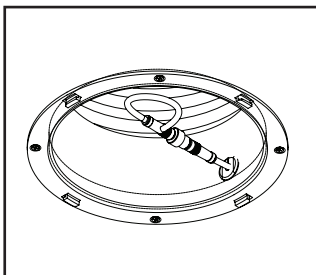
Pull the ducting down through the 160mm hole and tape the ducting onto the spigot with duct tape.

STEP 8

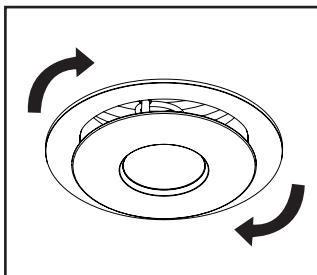
Push the ducting and spigot through the hole and fix in place with countersunk screws.

STEP 9

Connect the plug and socket, ensuring the cap is screwed tight. (Grille omitted from diagram for clarity).



STEP 9



STEP 10

STEP 10

Push the grille on the mounted spigot and twist clockwise until clips are tightly securing the grille in place.